

F.A.I. RTE.	SECTION	COUNTY	TOTAL SHEETS	SHEET NO.
290	2004-120BR	COOK	29	1

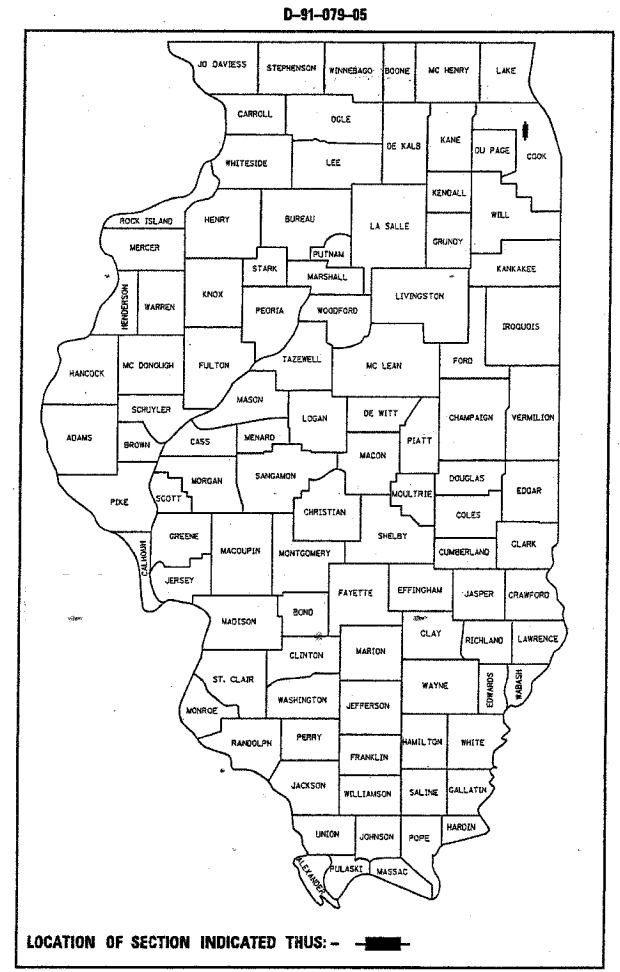
STATE OF ILLINOIS
DEPARTMENT OF TRANSPORTATION
DIVISION OF HIGHWAYS

**PROPOSED
HIGHWAY PLANS**

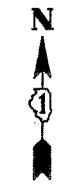
F.A.I. ROUTE 290: I-290/L 53
SECTION: 2004-120BR

* OVER I-90 (TOLL), IL. RTE 58 (GOLF RD) AND WOODFIELD DR
BRIDGE REPAIR-DECK PATCHING

**COOK COUNTY
C-91-079-05**



LOCATION OF SECTION INDICATED THUS: - [shaded box] -



* IMPROVEMENT LOCATIONS

- 1) LOCATION 1
OVER I-90 (TOLLWAY) (SN 016-0977)
- 2) LOCATION 2
OVER IL-58 (GOLF RD) (SN 016-0980)
- 3) LOCATION 3
I-290 (SB) OVER WOODFIELD DR (SN 016-0978)

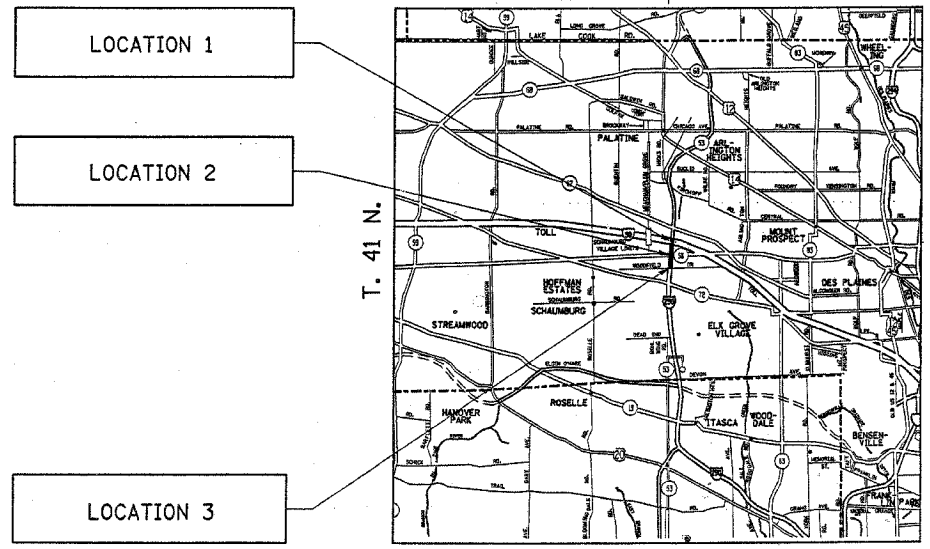
TRAFFIC DATA

I-290 ADT (2002) = 184,300
POSTED SPEED LIMIT = 55 MPH

I-90 ADT (2002) = 144,600
POSTED SPEED LIMIT = 55 MPH

IL 58 (GOLF RD) ADT (2004) = 56,500
POSTED SPEED LIMIT = 40 MPH

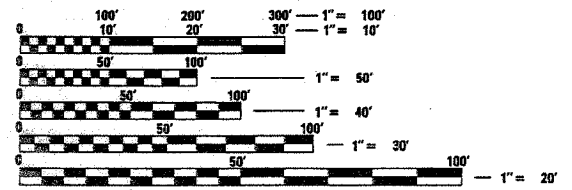
WOODFIELD DR ADT (2003) = 5,009
POSTED SPEED LIMIT = 35 MPH



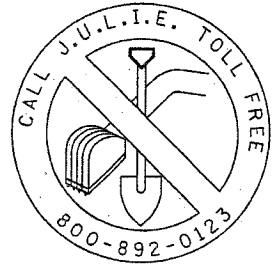
ELK GROVE TOWNSHIP

FOR INDEX OF SHEETS, SEE SHEET NO. 2

THE IMPROVEMENT IS LOCATED IN THE
VILLAGES OF SCHAUMBURG AND
ROLLING MEADOWS



FULL SIZE PLANS HAVE BEEN PREPARED USING STANDARD
ENGINEERING SCALES. REDUCED SIZED PLANS WILL NOT
CONFORM TO STANDARD SCALES. IN MAKING MEASUREMENTS
ON REDUCED PLANS, THE ABOVE SCALES MAY BE USED.



CONTRACT NO. 62889

DISTRICT ONE DESIGN PLAN PREPARATION ENGINEER:
KEN ENG/ROBERT BORO (847) 705-4178

STATE OF ILLINOIS
DEPARTMENT OF TRANSPORTATION
DIVISION OF HIGHWAYS

SUBMITTED March 4, 20 05

Dina O'Keefe
DEPUTY DIRECTOR OF HIGHWAYS, REGION ENGINEER

August 12, 20 05
Mike Nune
ENGINEER OF DESIGN AND ENVIRONMENT

August 12, 20 05
Victor Mader
DIRECTOR OF HIGHWAYS, CHIEF ENGINEER

**PRINTED BY THE AUTHORITY
OF THE STATE OF ILLINOIS**