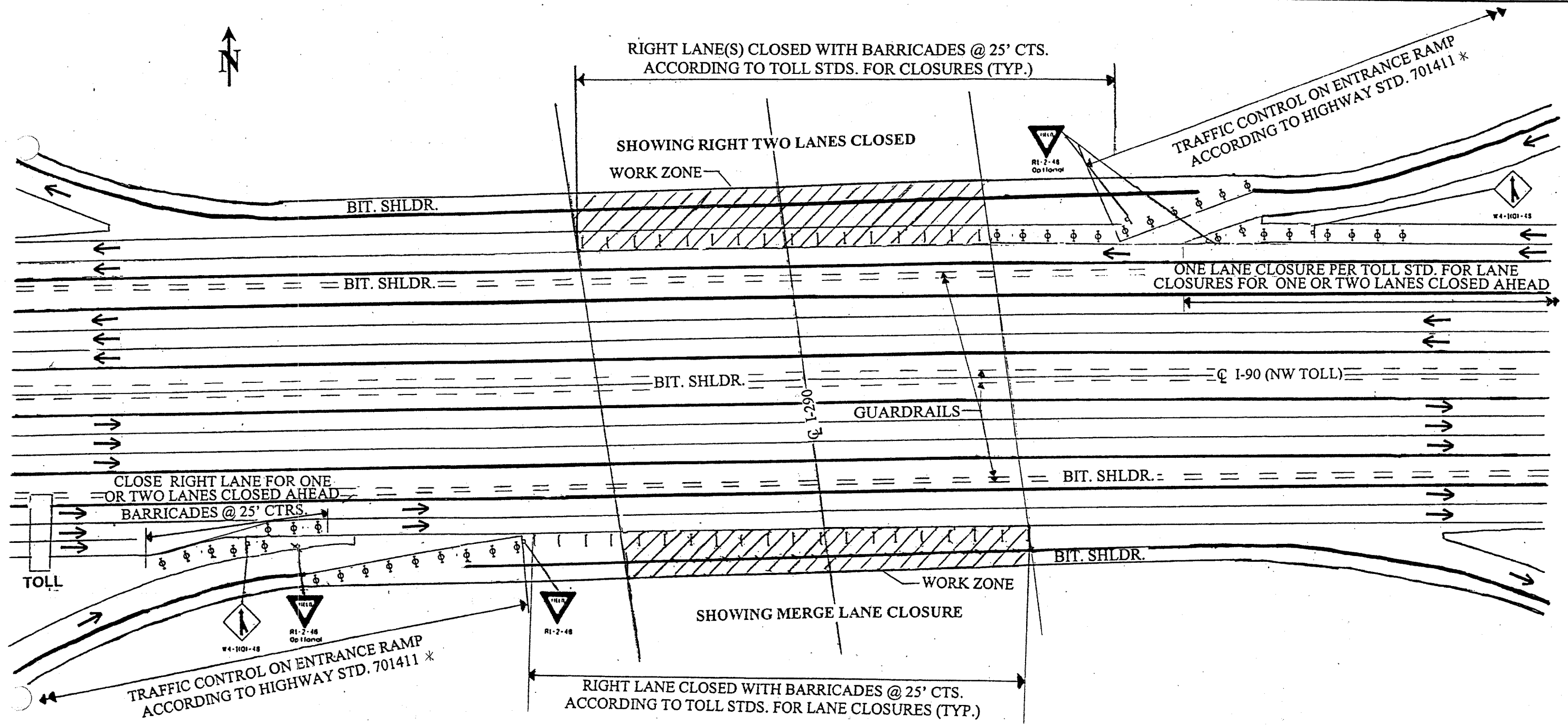


ROUTE	SECTION	COUNTY	TOTAL SHEETS	SHEET NUMBER
FAI 290	2004-120 BR	COOK & DUPAGE	29	24



NOTES:
 COVER CONFLICTING PAVEMENT MARKINGS WITH BLACK TYPE III TAPE. THE COST OF THE TAPE IS INCLUDED IN THE TRAFFIC CONTROL ITEMS. COST OF ADDITIONAL TRAFFIC CONTROL ITEMS SHOWN ARE INCLUDED IN THE COST OF "TRAFFIC CONTROL & PROTECTION (EXPRESSWAYS)".

* USE 500' MERGE IN LIEU OF 300'
 ANY MODIFICATIONS TO THE MAINTENANCE OF TRAFFIC LAYOUT MAY BE REQUESTED BY THE RESIDENT ENGINEER OR THE TOLLWAY AUTHORITY IF NECESSARY TO PROVIDE A BETTER FLOW OF TRAFFIC THROUGH THE CLOSURE.

ILLINOIS DEPARTMENT OF TRANSPORTATION
 ENTRANCE & EXIT RAMP TRAFFIC CONTROL:
 (SN 016-0977, LOCATION 1)
 I-90