

F.A.P. RTE.	SECTION	COUNTY	TOTAL SHEETS	SHEET NO.
365	2016-014BP	DUPAGE	13	1
		ILLINOIS	CONTRACT NO. 62C30	

DEPARTMENT OF TRANSPORTATION

PROPOSED HIGHWAY PLANS

FAP ROUTE 365: IL-56 (BUTTERFIELD ROAD)
 AT HIGHLAND AVENUE
 SECTION: 2016-014BP
 BRIDGE PAINTING
 DUPAGE COUNTY
 C-91-329-16

D-91-329-16



FOR INDEX OF SHEETS, SEE SHEET NO. 2

IMPROVEMENT IS LOCATED IN THE VILLAGE OF LOMBARD

TRAFFIC DATA

2015 ADT IL-56 (BUTTERFIELD ROAD): 43,800

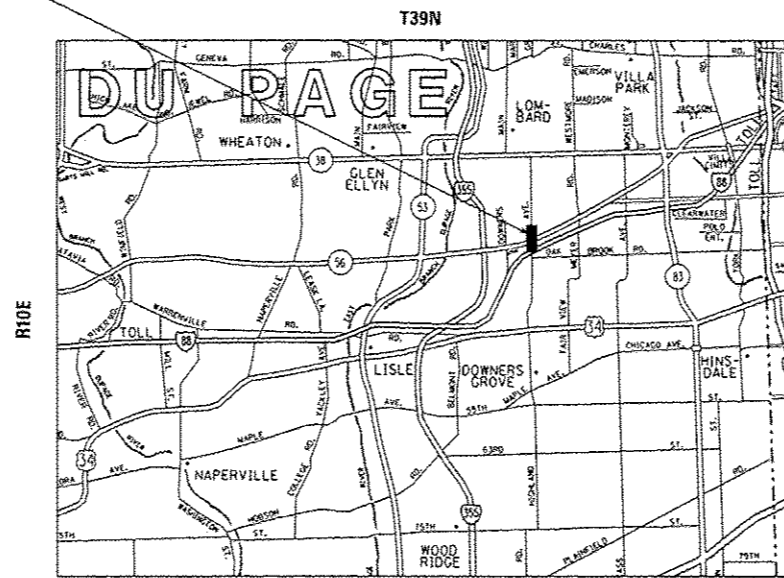
2008 ADT HIGHLAND AVENUE: 28,500

POSTED SPEED LIMIT

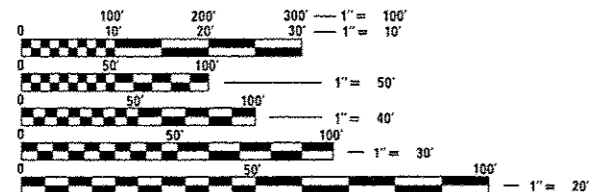
IL-56 (BUTTERFIELD ROAD): 45 MPH

HIGHLAND AVENUE: 35 MPH

SN 022-0154
LOCATION OF IMPROVEMENT



YORK TOWNSHIP



FULL SIZE PLANS HAVE BEEN PREPARED USING STANDARD ENGINEERING SCALES. REDUCED SIZED PLANS WILL NOT CONFORM TO STANDARD SCALES. IN MAKING MEASUREMENTS ON REDUCED PLANS, THE ABOVE SCALES MAY BE USED.

J.U.L.I.E.
 JOINT UTILITY LOCATION INFORMATION FOR EXCAVATION
 1-800-892-0123
 OR 811

PROJECT ENGINEER: JEAN ALAIN MIDY (847) 221-3056
 PROJECT MANAGER: ISSAM RAYYAN (847) 705-4178

CONTRACT NO: 62C30

STATE OF ILLINOIS
 DEPARTMENT OF TRANSPORTATION

SUBMITTED July 1, 2016

John Fordman
 REGIONAL ENGINEER

Aug 12, 2016
Mariam M. Addis PE, E
 acting ENGINEER OF DESIGN AND ENVIRONMENT

Aug 12, 2016
Annelle
 DIRECTOR OF PROGRAM DEVELOPMENT

PRINTED BY THE AUTHORITY OF THE STATE OF ILLINOIS

INDEX OF SHEETS

SHEET NO.	DESCRIPTION
1	COVER SHEET
2	INDEX OF SHEETS, STANDARDS, AND GENERAL NOTES
3	SUMMARY OF QUANTITIES
4	PLAN AND PROFILE
5	FRAMING PLANS
6	STRUCTURAL STEEL DETAILS
7-7B	FRAMING & STRUCTURAL STEEL DETAILS
8-8B	FRAMING & STRUCTURAL STEEL DETAILS
9 - 11	BEARINGS DETAILS
12	SHOULDER CLOSURES AND PARTIAL RAMP CLOSURES (TC-17)
13	INFORMATION SIGN (TC-22)

STANDARD NO.

DESCRIPTION

701101-05	OFF ROAD OPERATION-MULTILANE LESS THAN 15 FT TO EDGE OF PAVEMENT
701106-02	OFF ROAD OPERATION-MULTILANE MORE THAN 15 AWAY
701421-07	LANE CLOSURE MULTI LANE-DAY OPERATION ONLY 45-55 MPH
701601-09	URBAN LANE CLOSURE MULTILANE 1W2W WITH NON TRAVERSABLE MEDIAN
701901-05	TRAFFIC CONTROL DEVICES

GENERAL NOTES

BEFORE STARTING ANY EXCAVATION, THE CONTRACTOR SHALL CALL "JULIE" AT 800-892-0123 OR 811 FOR FIELD LOCATIONS OF BURIED ELECTRIC, TELEPHONE AND GAS FACILITIES. (48 HOUR NOTIFICATION IS REQUIRED).

THE CONTRACTOR SHALL COORDINATE CONSTRUCTION ACTIVITIES WITH UTILITY COMPANIES AND THE VILLAGE OF LOMBARD.

THE CONTRACTOR WILL NOT BE ALLOWED TO SET UP A YARD OR FIELD OFFICE ON STATE PROPERTY WITHOUT WRITTEN PERMISSION FROM THE DEPARTMENT.

IT SHALL BE THE CONTRACTOR'S RESPONSIBILITY TO VERIFY ALL DIMENSIONS AND CONDITIONS EXISTING IN THE FIELD PRIOR TO CONSTRUCTION AND ORDERING OF MATERIALS.

IT SHALL BE CONTRACTOR'S RESPONSIBILITY TO PROTECT AND PRESERVE THE EXISTING BRIDGE LIGHTING AT ANY LOCATION THAT LIGHTING IS ENCOUNTERED ADJACENT TO AN AREA TO BE CLEANED AND PAINTED.

THE CONTRACTOR SHALL CONTACT THE DISTRICT ONE TRAFFIC CONTROL SUPERVISOR AT (847)705-4470 (72 HOURS IN ADVANCE OF BEGINNING WORK).

THESE PLANS HAVE BEEN PREPARED FROM NOTES RECEIVED FROM THE BUREAU OF MAINTENANCE BRIDGE INSPECTORS.

DO NOT SCALE PLANS FOR CONSTRUCTION DIMENSIONS.

GENERAL NOTES FOR PAINT

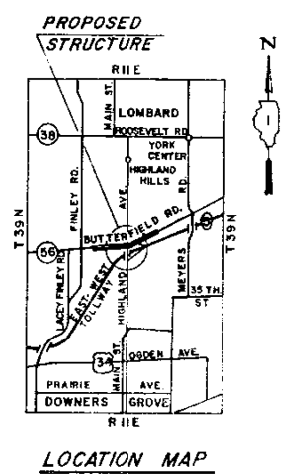
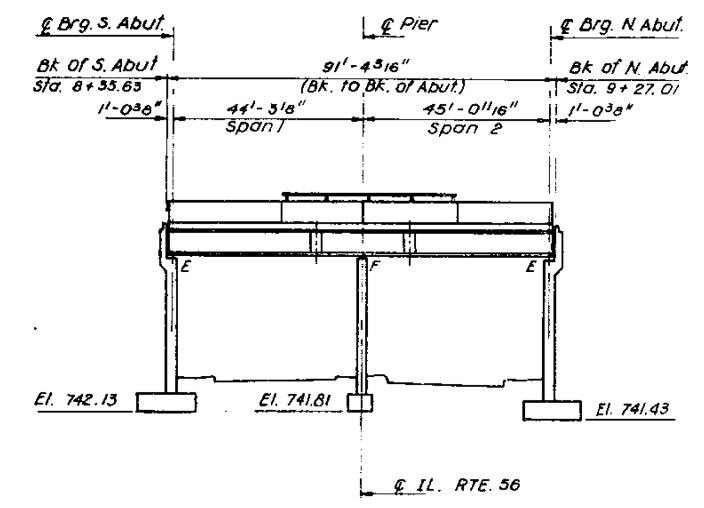
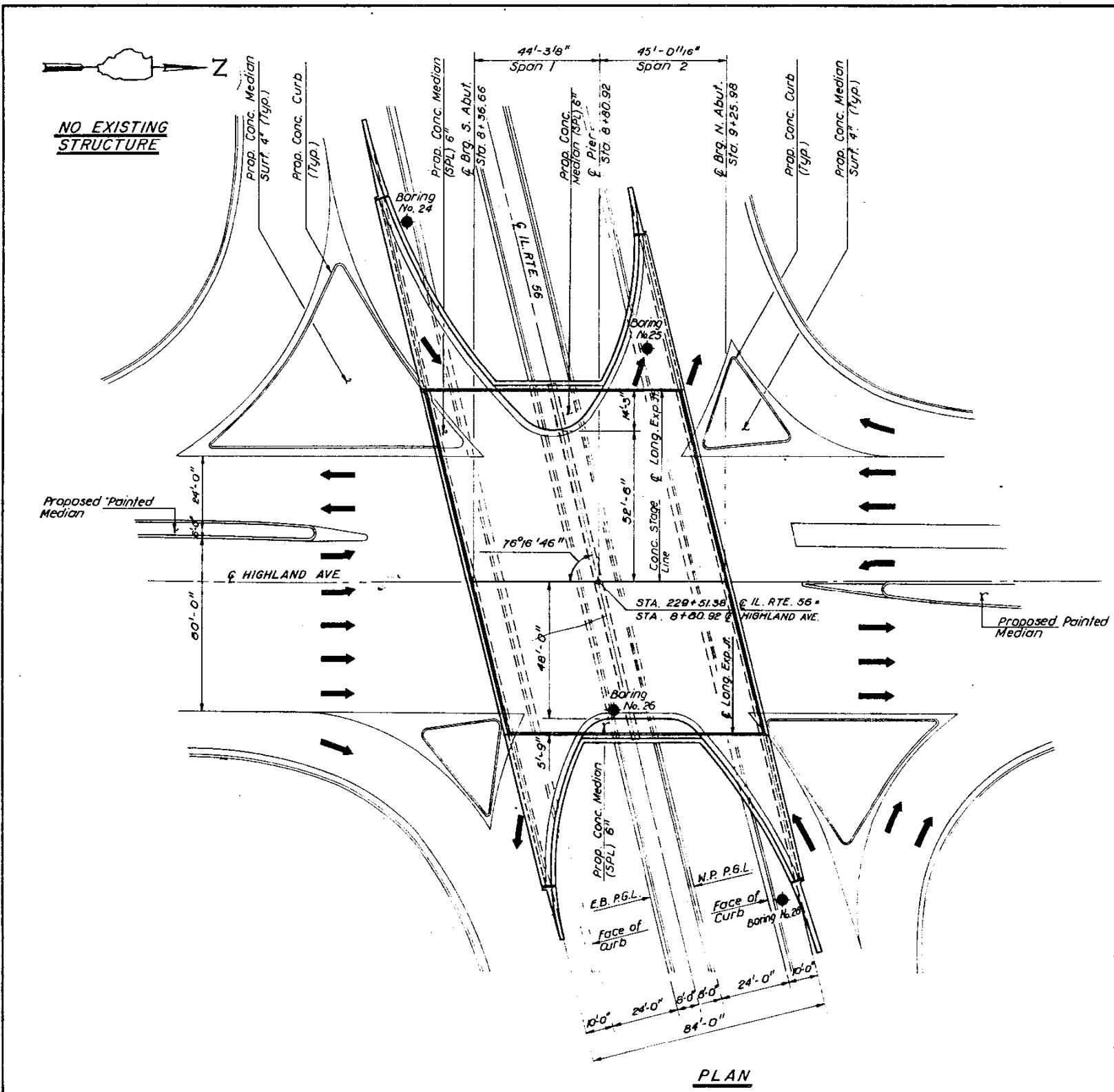
CLEANING AND PAINTING OF THE STRUCTURAL STEEL SHALL BE AS SPECIFIED IN THE SPECIAL PROVISIONS FOR "CLEANING AND PAINTING EXISTING STEEL STRUCTURES."

A MINIMUM OF ONE (1) AIR MONITORS WILL BE REQUIRED AT ALL LOCATIONS TO MONITOR ABRASIVE BLASTING OPERATIONS. SEE SPECIAL PROVISIONS FOR "CONTAINMENT AND DISPOSAL OF LEAD PAINT CLEANING RESIDUE."

ALL ITEMS (SUCH AS, BUT NOT LIMITED TO: CONDUITS BRACKETS, AND DECK DRAINS) ATTACHED TO THE OUTSIDE OF FASCIA BEAMS SHOULD BE CLEANED AND PAINTED.

ALL EXISTING STEEL SHALL BE CLEANED PER NEAR WHITE BLAST CLEANING SSPC-SP10. THE AREA DESIGNATED SHALL BE PAINTED ACCORDING TO THE REQUIREMENTS OF PAINT SYSTEM 1-02/E/U. THE COLOR OF THE FINAL FINISH COAT FOR ALL INTERIOR STEEL SURFACES SHALL BE GRAY, MUNSELL NO 5B 7/1. THE COLOR OF THE FINAL FINISH COAT FOR THE EXTERIOR AND BOTTOM FLANGE OF THE FASCIA BEAMS SHALL BE REDDISH BROWN, MUSELL NO 2.5 YR 3/4.

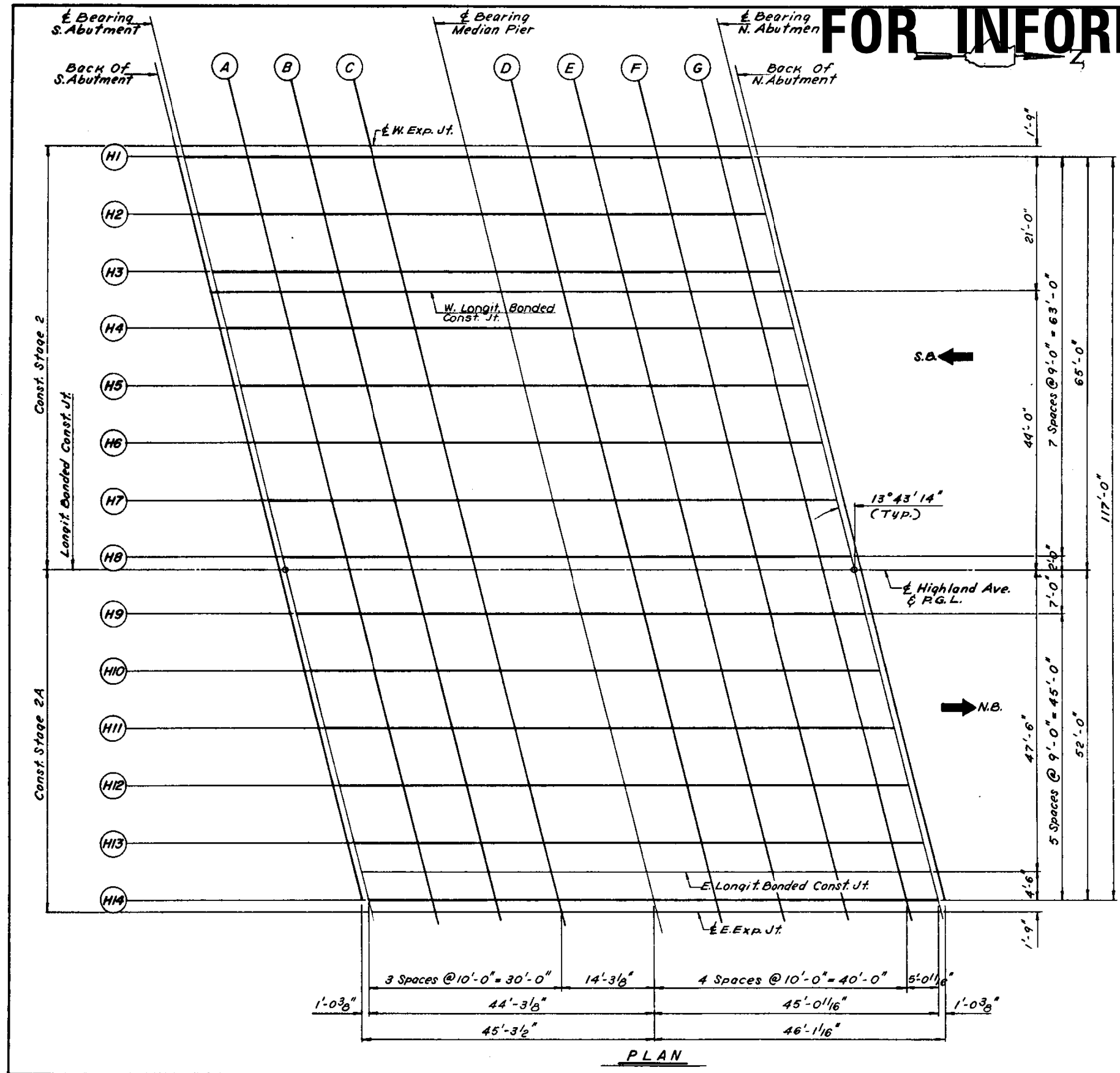
FILE NAME :	USER NAME : hobbann	DESIGNED -	REVISED -	STATE OF ILLINOIS DEPARTMENT OF TRANSPORTATION	IL-56 (BUTTERFIELD ROAD) AT HIGHLAND AVENUE (SN 022-0154) INDEX OF SHEETS, STANDARDS & GENERAL NOTES	F.A.P. RTE.	SECTION	COUNTY	TOTAL SHEETS	SHEET NO.
p:\11084810\INTEG\Illinois.gov\PI\DOT\Documents\DOT Offices\District 1\Projects\0132916\0132916-Design.dgn	REVISIONS	REVISIONS	365			2016-0148P	DUPAGE	13	2	
PLOT SCALE * 100.0000 1/ in.	CHECKED -	REVISIONS	CONTRACT NO. 62C30							
PLOT DATE * 7/9/2016	DATE -	REVISIONS	SCALE:			SHEET	OF	SHEETS	STA.	TO



FOR INFORMATION ONLY

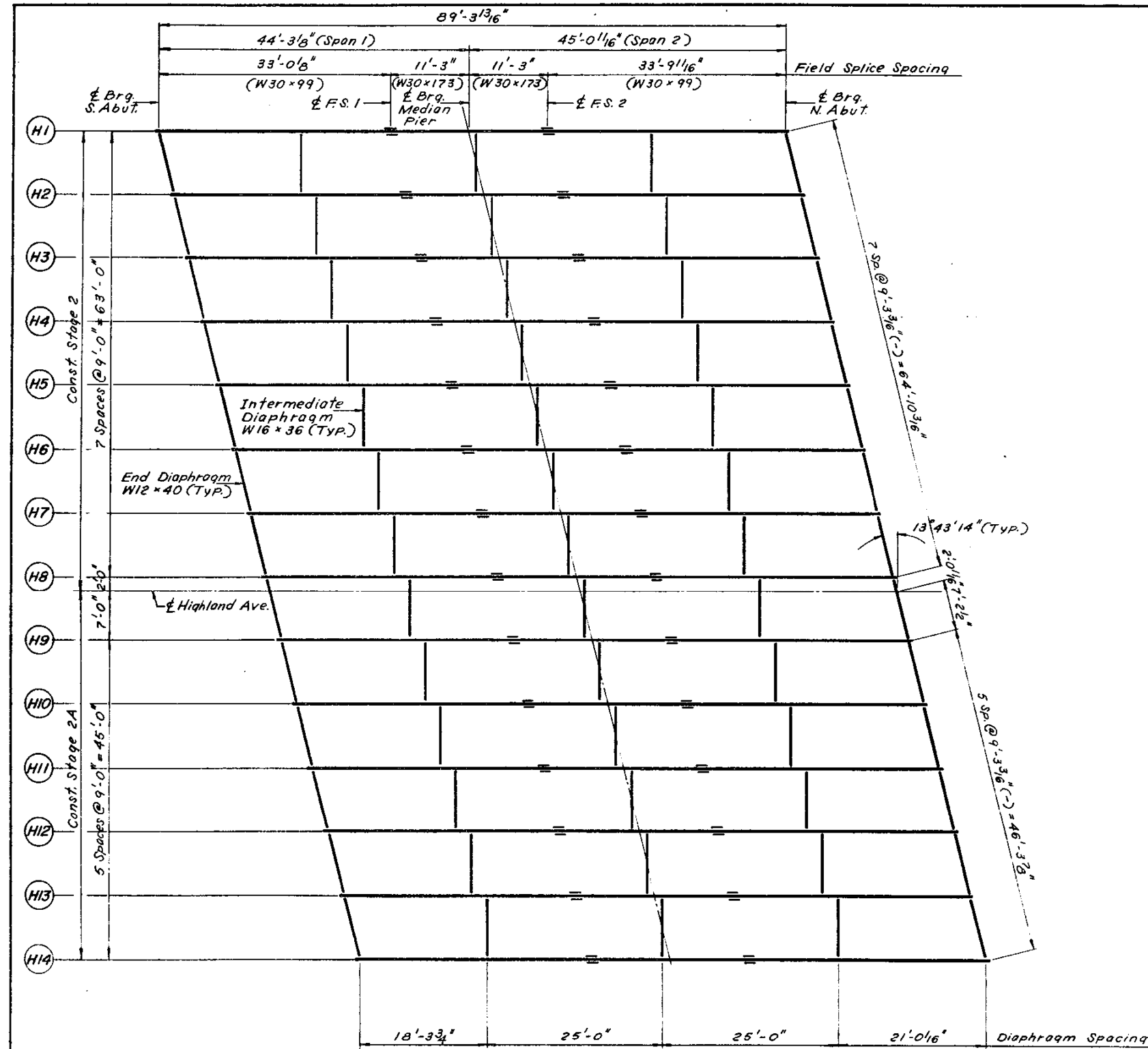
FILE NAME =	USER NAME = hassan	DESIGNED -	REVISED -	STATE OF ILLINOIS DEPARTMENT OF TRANSPORTATION	SN 022-0154 PLAN & PROFILE	F.A.P. RTE.	SECTION	COUNTY	TOTAL SHEETS	SHEET NO.	
pw\11084EBIDINTEG.111nois.gov\PIWIDOT\Documents\DOT Offices\District 1\Projects\DI32916-Design\Design.dgn		REVISED -	REVISED -			365	2016-014BP	DUPAGE	13	4	
PLOT SCALE = 100.0000' / 1"		CHECKED -	REVISED -			CONTRACT NO. 62C30					
Default		DATE -	REVISED -			ILLINOIS FED. AID PROJECT					
				SCALE:	SHEET	OF	SHEETS	STA.	TO	STA.	

FOR INFORMATION ONLY



PLAN

FILE NAME =	USER NAME = hassann	DESIGNED -	REVISED -	STATE OF ILLINOIS DEPARTMENT OF TRANSPORTATION	SN 022-0154 FRAMING PLAN	F.A.P. RTE.	SECTION	COUNTY	TOTAL SHEETS	SHEET NO.		
pw\11084EBIDINTEG.illinois.gov\PIWIDT\Documents\DOT Offices\District 1\Projects\132916\Design\132916-Design.dgn		CHECKED -	REVISED -			365	2016-014BP	DUPAGE	13	5		
Default	PLOT SCALE = 100.0000' / in.	DATE -	REVISED -			CONTRACT NO. 62C30						
	PLOT DATE = 7/8/2016					ILLINOIS FED. AID PROJECT						
						SCALE:	SHEET	OF	SHEETS	STA.	TO	STA.

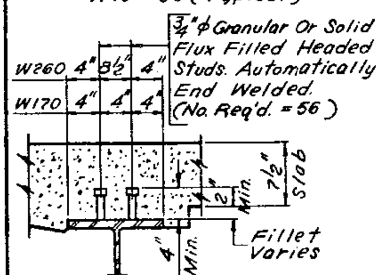
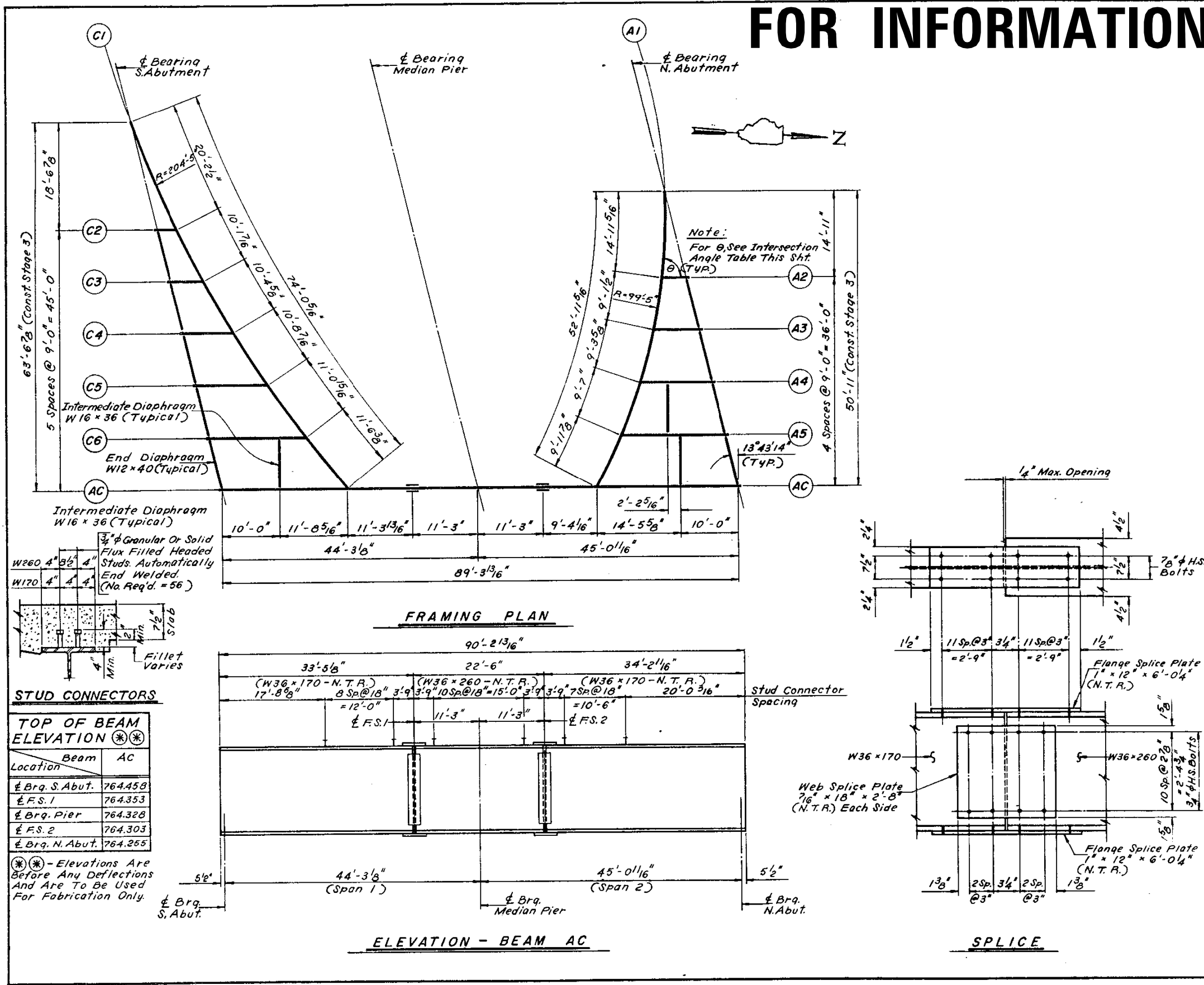


FRAMING PLAN

FOR INFORMATION ONLY

FILE NAME =	USER NAME = hassann	DESIGNED -	REVISED -	STATE OF ILLINOIS DEPARTMENT OF TRANSPORTATION	SN 022-0154 STRUCTURAL STEEL DETAILS	F.A.P. RTE.	SECTION	COUNTY	TOTAL SHEETS	SHEET NO.	
pw\11084EBIDINTEG.illinois.gov\PIWIDOTDocuments\IDOT Offices\District 1\Projects\DI32916-Design\Design\DI32916-Design.dgn	PLOT SCALE = 100.0000' / in.	CHECKED -	REVISED -			365	2016-014BP	DUPAGE	13	6	
Default	PLOT DATE = 7/8/2016	DATE -	REVISED -			CONTRACT NO. 62C30					
						ILLINOIS FED. AID PROJECT					

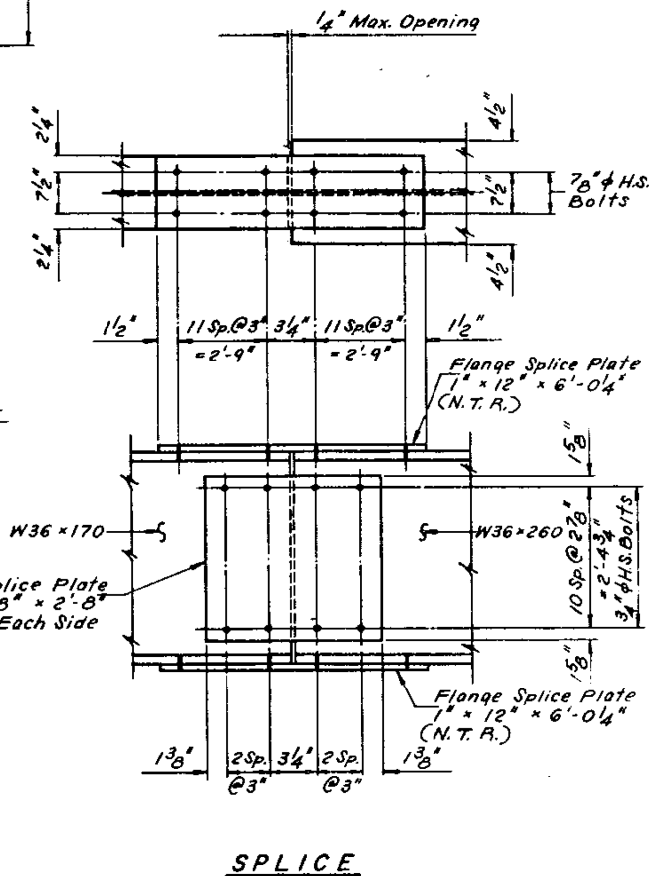
FOR INFORMATION ONLY



STUD CONNECTORS

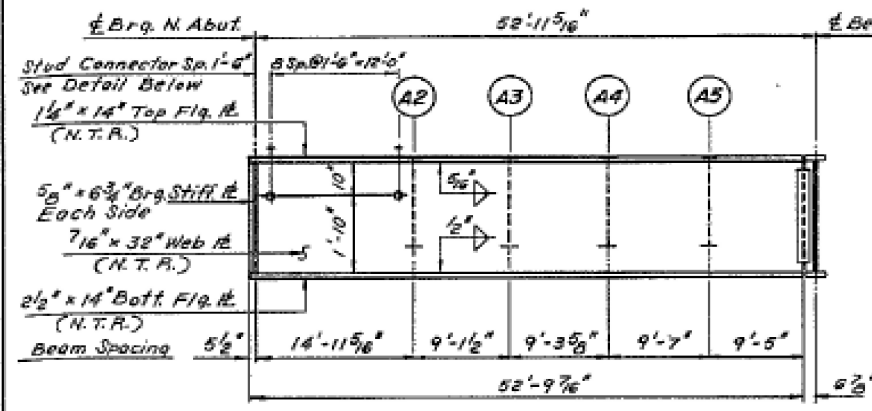
TOP OF BEAM ELEVATION (**) (**) (ft)	
Beam Location	AC
Brq. S. Abut.	764.458
F.S. 1	764.353
Brq. Pier	764.328
F.S. 2	764.303
Brq. N. Abut.	764.255

(**) (**) - Elevations Are Before Any Deflections And Are To Be Used For Fabrication Only.

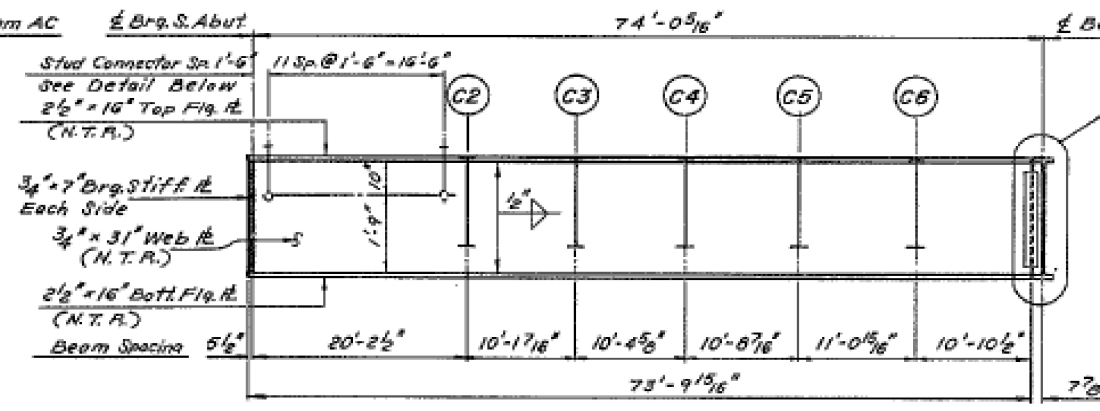


FOR INFORMATION ONLY

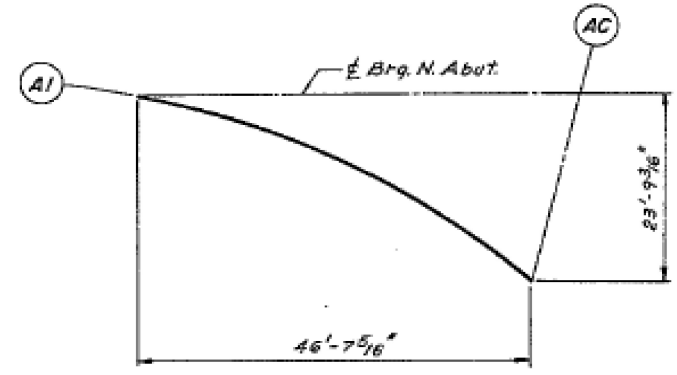
SECTION	COUNTY	TOTAL SHEETS	SHEET NO.
2615 56 R-3 (85)	DUPAGE	264	232
STA. 8 + 35.63		TO STA. 9 + 27.01	
JOB NO. 2016-014BP		DRAWN BY G.P.A.	



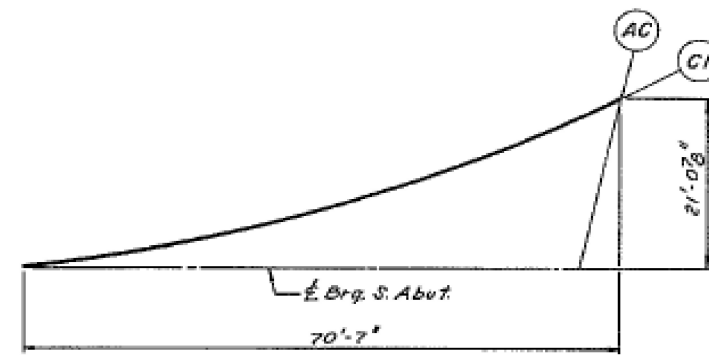
ELEVATION - GIRDER A1



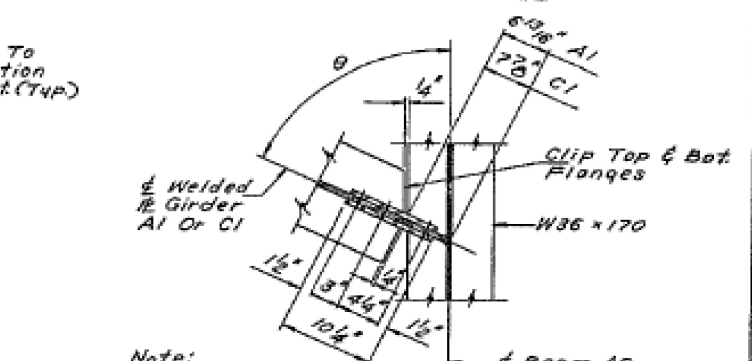
ELEVATION - GIRDER C1



GIRDER A1 LAYOUT DIMENSIONS



GIRDER C1 LAYOUT DIMENSIONS



Note:
For θ, See Intersection Angle Table, Sht. 24

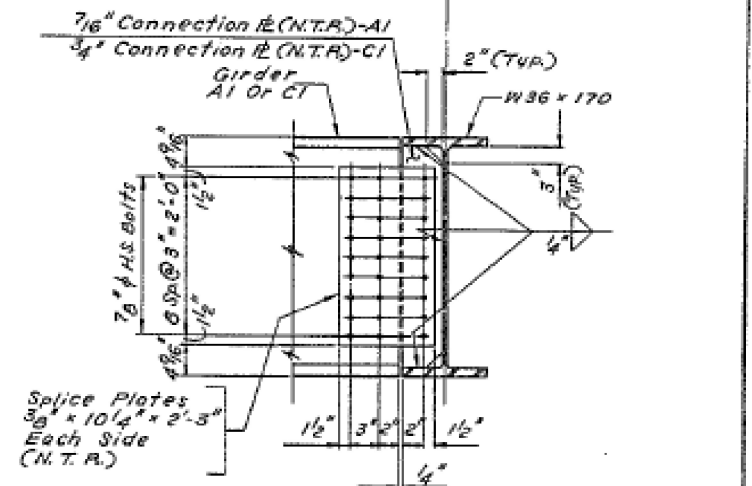
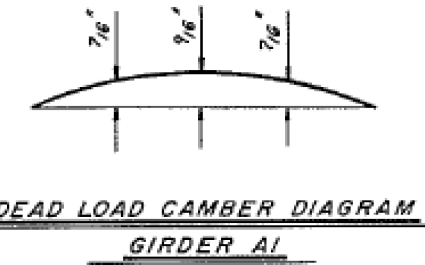
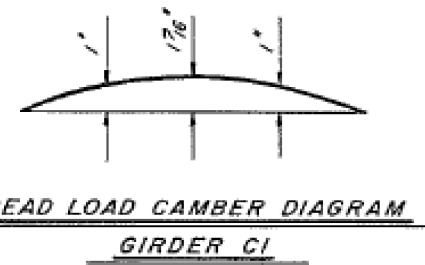


PLATE GIRDER TO BEAM CONNECTION DETAILS

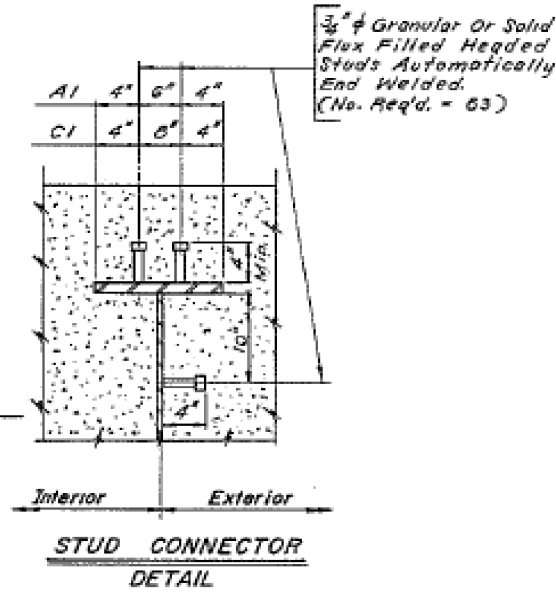
Notes:
For Ramp Framing Plan, See Sheet No. 24.
For Bearing Details, See Sht. No. 32.
Work This Sheet With Sht. No's. 24, 25 & 32.



DEAD LOAD CAMBER DIAGRAM GIRDER A1



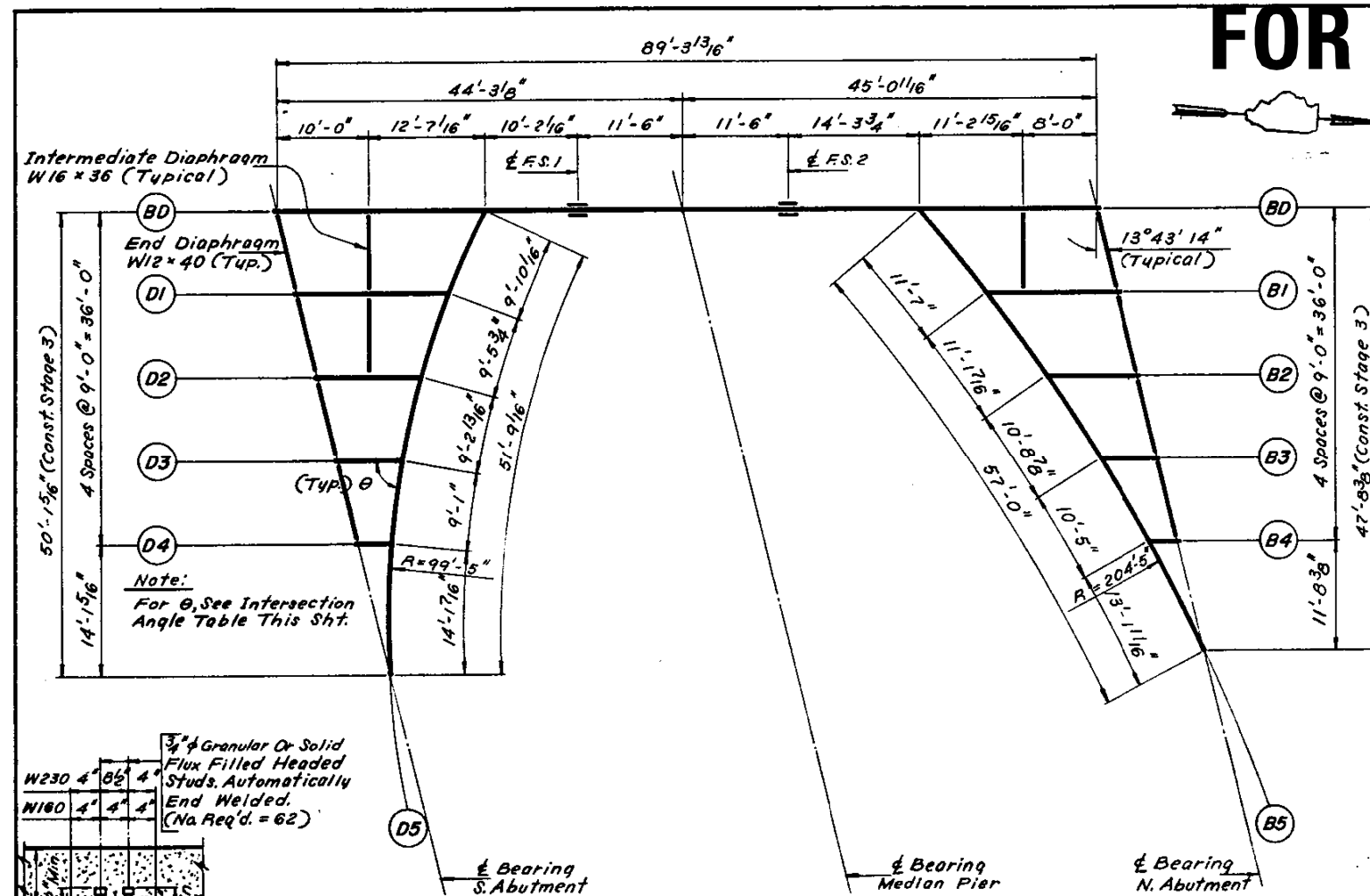
DEAD LOAD CAMBER DIAGRAM GIRDER C1



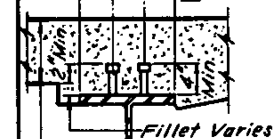
STUD CONNECTOR DETAIL

JACK E. LESCH & ASSOCIATES TRANSPORTATION ENGINEERING 2016-014BP		ILLINOIS DEPARTMENT OF TRANSPORTATION STRUCTURAL STEEL DETAILS-RAMPS A & C STRUCTURE NO. 022-0154 HIGHLAND AVENUE (FA.U.-2615) OVER IL. RTE. 56 (BUTTERFIELD RD.), FA.U.-3545 SECTION 56 R-3 (85) DUPAGE COUNTY STA. 8 + 80.92	
REVISIONS NAME DATE		SCALE: VERT. HORIZ. DRAWN BY G.P.A. DATE 5-8-87 CHECKED BY J.D.P.	

FOR INFORMATION ONLY



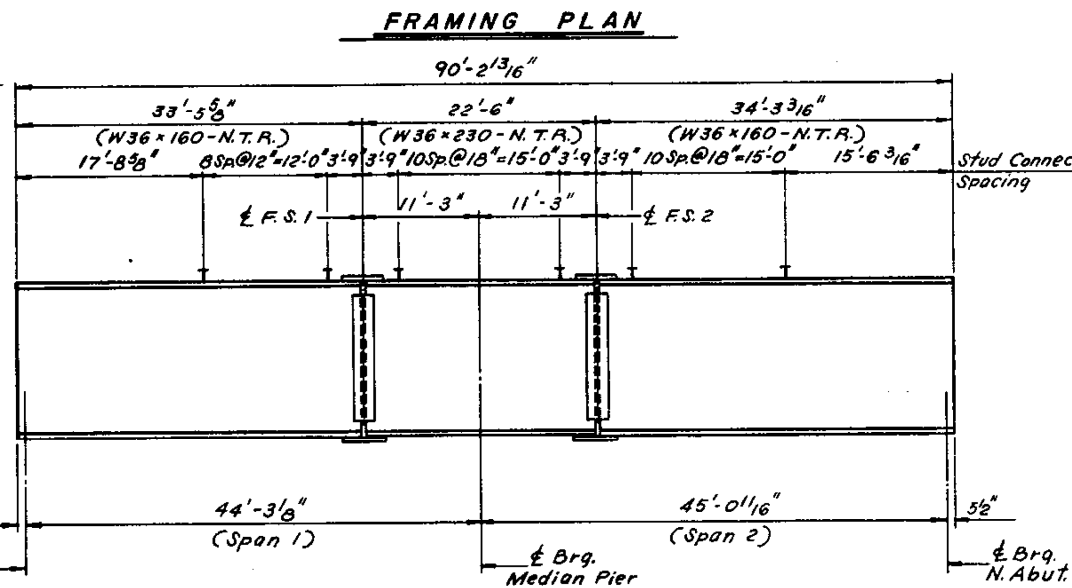
Note:
For θ , See Intersection Angle Table This Sht.



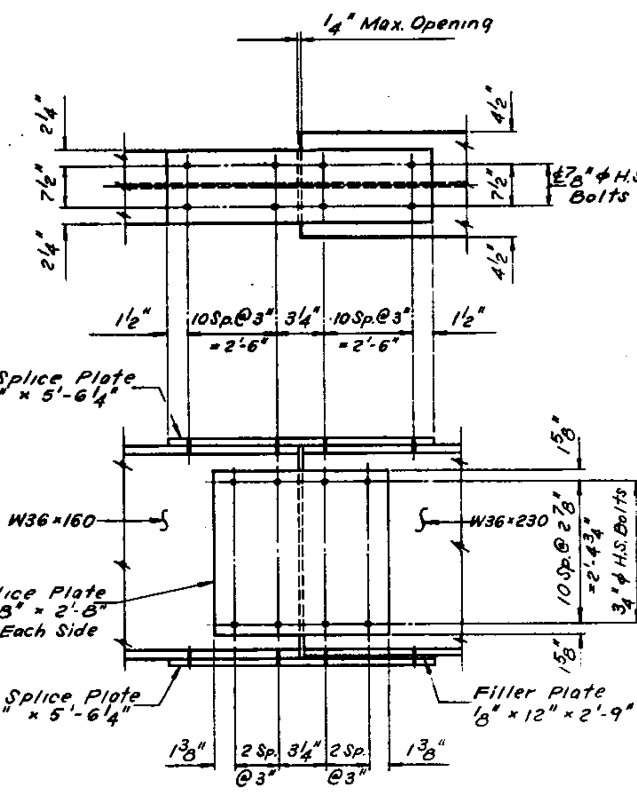
STUD CONNECTOR

Beam	BD
Location	
Brq. S. Abut.	764.691
F.S. 1	764.474
Brq. Pier	764.411
F.S. 2	764.348
Brq. N. Abut.	764.189

(*) (*) - Elevations Are Before Any Deflections And Are To Be Used For Fabrication Only.



ELEVATION - BEAM BD



SPLICE

FILE NAME =	USER NAME = hassann	DESIGNED =	REVISED =
p:\1\084EBID\INTEG.illinois.gov\PIWDD\Documents\DOT Offices\District 1\Projects\DI32916-Design.dgn			
PLOT SCALE = 100.0000 / in.	CHECKED =	REVISED =	
Default	PLOT DATE = 7/8/2016	DATE =	REVISED =

STATE OF ILLINOIS
DEPARTMENT OF TRANSPORTATION

SN 022-0154
FRAMING PLAN & STRUCTURAL STEEL DETAILS

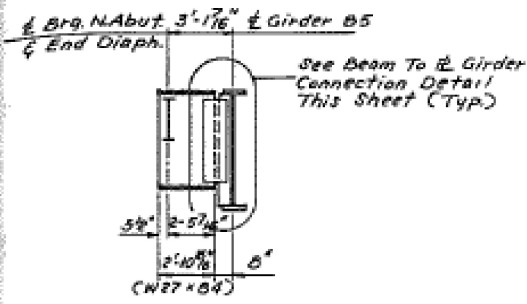
SCALE: SHEET OF SHEETS STA. TO STA.

F.A.P. RTE.	SECTION	COUNTY	TOTAL SHEETS	SHEET NO.
365	2016-014BP	DUPAGE	13	8
CONTRACT NO. 62C30			ILLINOIS FED. AID PROJECT	

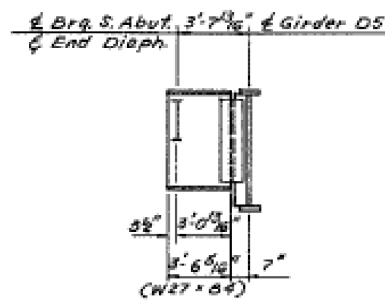
FOR INFORMATION ONLY

SECTION	COUNTY	TOTAL SHEETS	SHEET NO.
2615 56R-3(85)	DUPAGE	264	234
STA. 8+35.63	TO STA. 9+27.01		
FILE NAME: 2615 56R-3(85)	ILLINOIS	FILE NO. 2615	

Sheet 28 of 45



ELEVATION-BEAM B4
(Looking East)

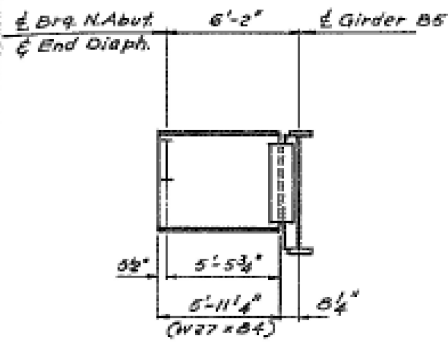
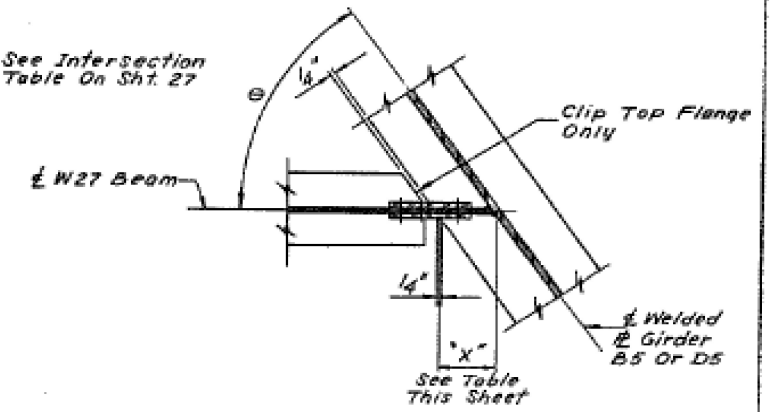


ELEVATION-BEAM D4
(Looking West)

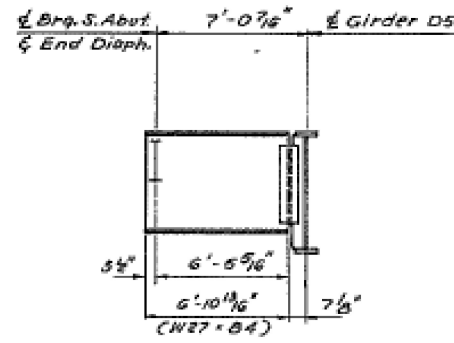
* TOP/BEAM ELEVATION

Beam	Location	± Brq. Abut.	DIMENSIONS "X"
B1		764.057	8 ¹³ / ₁₆ "
B2		763.929	8 ¹ / ₂ "
B3		763.807	8 ¹ / ₄ "
B4		763.693	8"
B5		763.585	
D1		764.559	7 ¹ / ₂ "
D2		764.455	7 ¹ / ₄ "
D3		764.361	7 ¹ / ₈ "
D4		764.283	7"
D5		764.165	

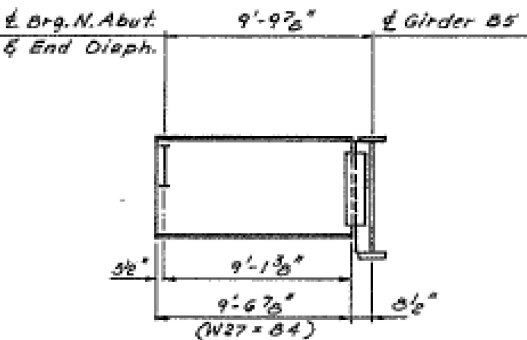
* - Elevations Are Before Any Deflections And Are To Be Used For Fabrication Only.



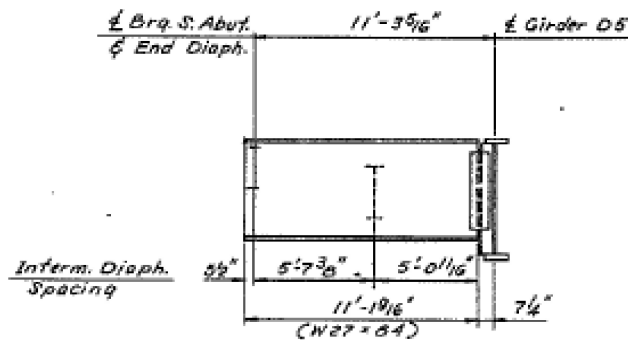
ELEVATION-BEAM B3
(Looking East)



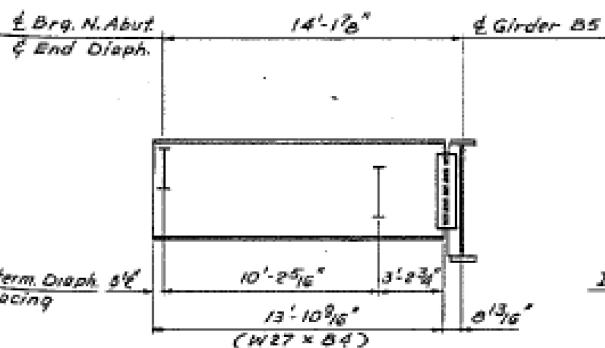
ELEVATION-BEAM D3
(Looking West)



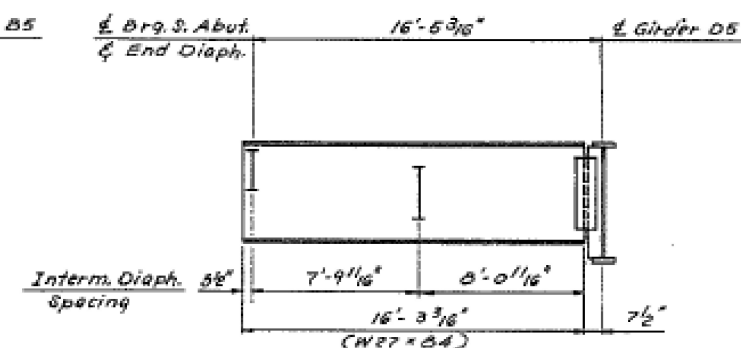
ELEVATION-BEAM B2
(Looking East)



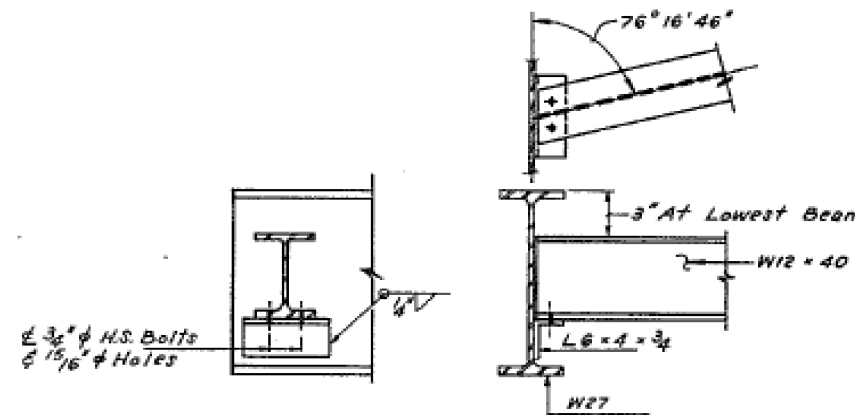
ELEVATION-BEAM D2
(Looking West)



ELEVATION-BEAM B1
(Looking East)

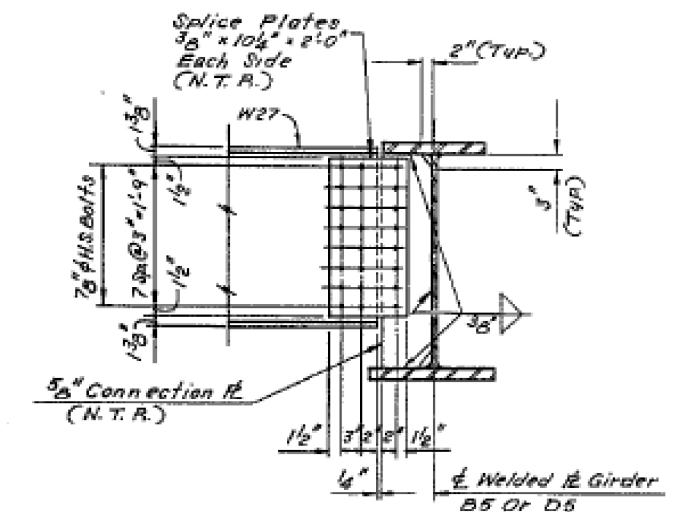


ELEVATION-BEAM D1
(Looking West)



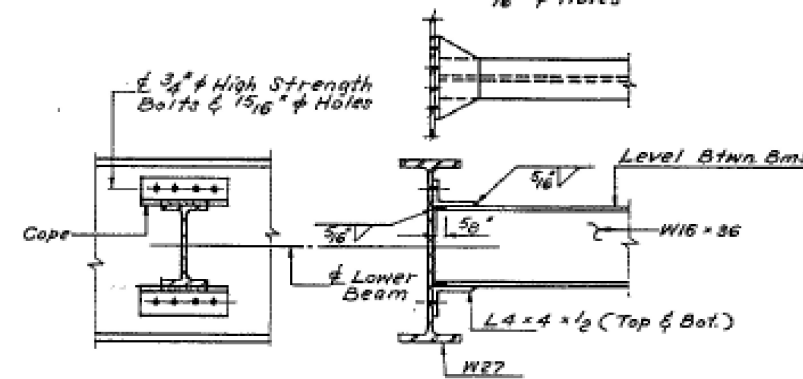
END DIAPHRAGM
(8 - Required)

Note: Hardened Washers Shall Be Required Over All 1 5/16" Holes



BEAM TO PLATE GIRDER CONNECTION

Notes:
For Ramp Framing Plan, See Sht. No. 27.
For Bearing Details, See Sht. No. 33.
Work This Sheet With Sht. No's. 27, 29 & 33.



INTERMEDIATE DIAPHRAGM
(13 - Required)

JACK E. LEIBER & ASSOCIATES TRANSPORTATION ENGINEERING EVANSTON, ILLINOIS		ILLINOIS DEPARTMENT OF TRANSPORTATION STRUCTURAL STEEL DETAILS-RAMPS B & D STRUCTURE NO. 022-0154 HIGH LAND AVENUE (FAU-2615) OVER IL. RTE. 56 (BUTTERFIELD RD.), FAU-3545 SECTION 56R-3(85) DUPAGE COUNTY STA. 8+80.92	
REVISIONS NAME DATE		SCALE	DRAWN BY G.R.A.
		VERT. 3/8" = 1'	CHECKED BY P.D.E.
		HORIZ. 3/8" = 1'	DATE 5-8-87

FILE NAME =	USER NAME = hassan	DESIGNED -	REVISED -
pw\11084EBID\INTEG\illinois.gov\PI\DOT\Documents\DOT Offices\District 1\Projects\0132916-Design\0132916-Design.dgn		CHECKED -	REVISED -
Default	PLOT DATE = 7/8/2016	DATE -	REVISED -

STATE OF ILLINOIS
DEPARTMENT OF TRANSPORTATION

SN 022-0154
FRAMING PLAN & STRUCTURAL STEEL DETAILS

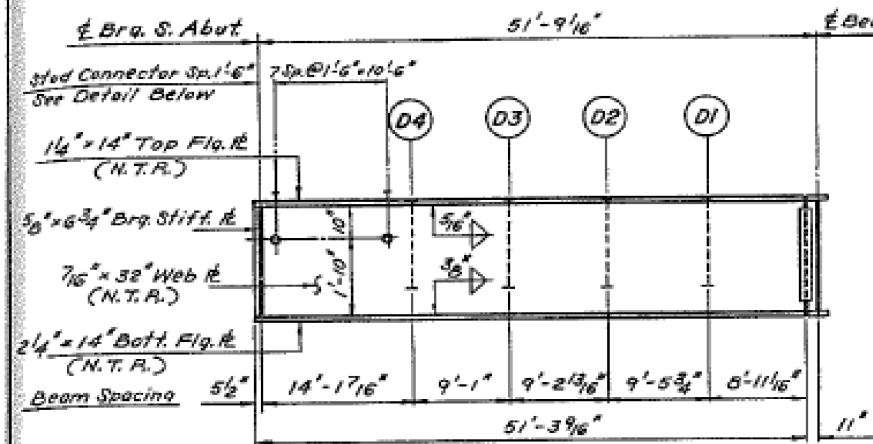
SCALE: SHEET OF SHEETS STA. TO STA.

F.A.P. RTE.	SECTION	COUNTY	TOTAL SHEETS	SHEET NO.
365	2016-014BP	DUPAGE	13	8A
				CONTRACT NO. 62C30
ILLINOIS FED. AID PROJECT				

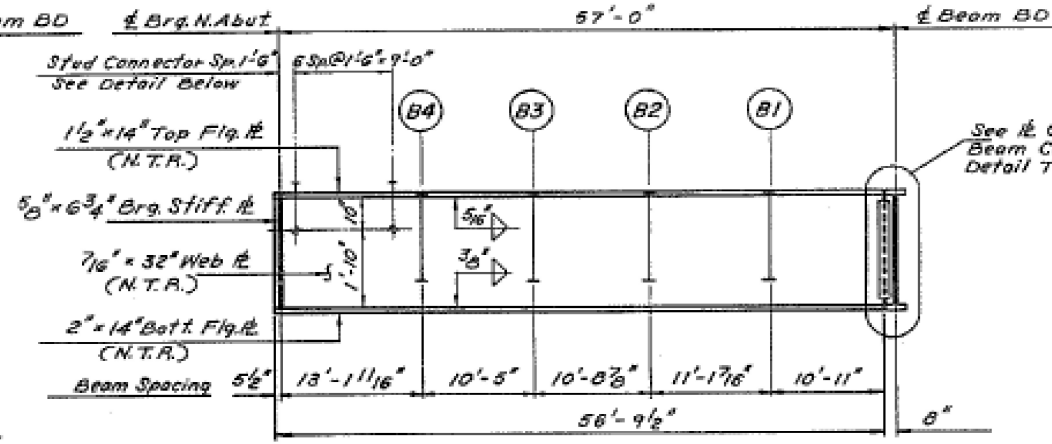
FOR INFORMATION ONLY

SECTION	COUNTY	TOTAL SHEETS	SHEET NO.
2615 56R-3(85)	DUPAGE	264	235
STA. 8 + 35.63	TO STA. 9 + 27.01		
FED. ROAD DIST. NO. 3		ILLINOIS	FED. AID PROJECT

Sheet 22 of 45

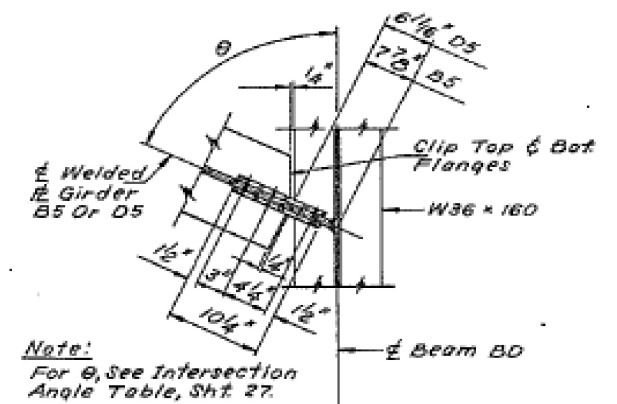


ELEVATION - GIRDER D5

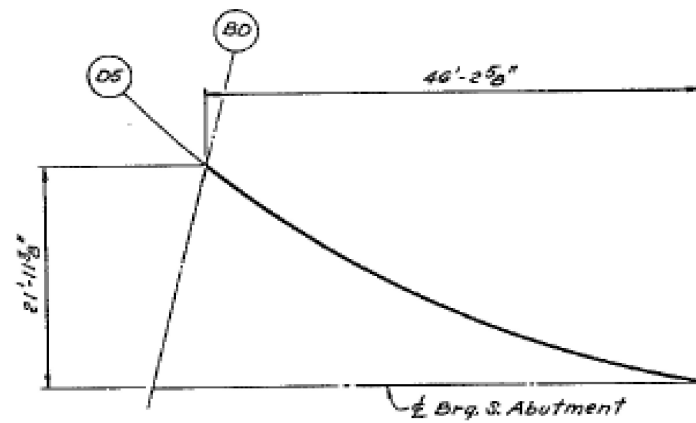


ELEVATION - GIRDER B5

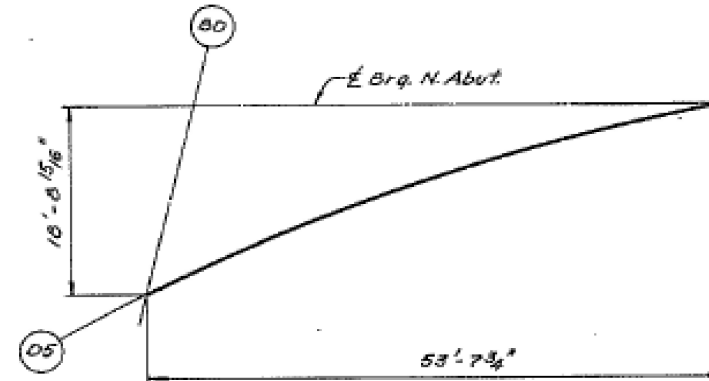
See R Girder To Beam Connection Detail This Sht. (Typ)



Note: For θ , See Intersection Angle Table, Sht. 27.



GIRDER D5 LAYOUT DIMENSIONS



GIRDER B5 LAYOUT DIMENSIONS

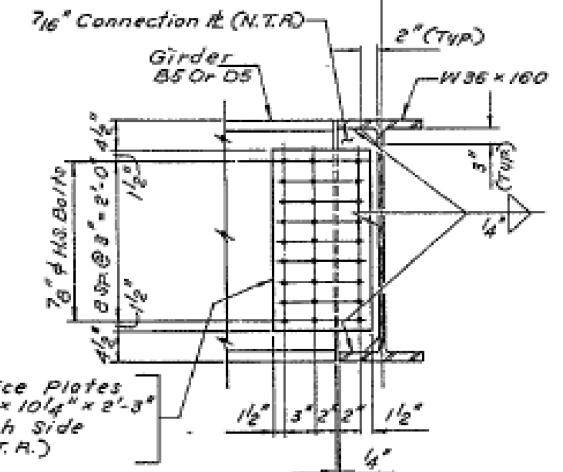
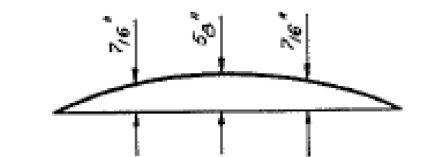


PLATE GIRDER TO BEAM CONNECTION DETAILS

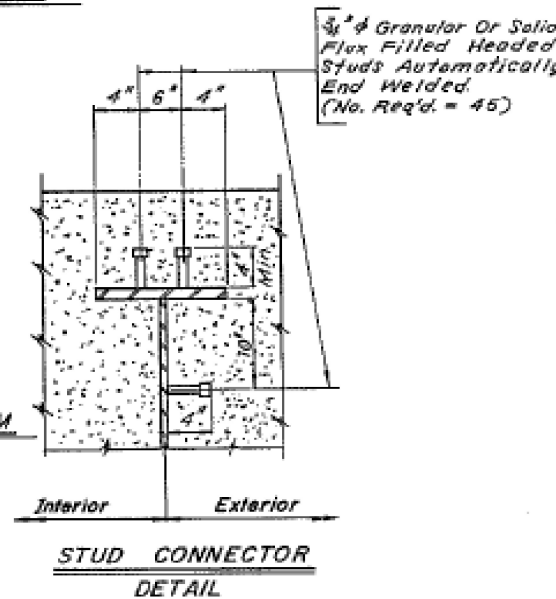
Notes:
For Ramp Framing Plan, See Sheet No. 24.
For Bearing Details, See Sheet No. 32.
Work This Sheet With Sheet Nos. 27, 28 & 29.



DEAD LOAD CAMBER DIAGRAM GIRDER D5



DEAD LOAD CAMBER DIAGRAM GIRDER B5



STUD CONNECTOR DETAIL

JACK E. LEISCH & ASSOCIATES TRANSPORTATION ENGINEERING ENGINEERS/ARCHITECTS		ILLINOIS DEPARTMENT OF TRANSPORTATION STRUCTURAL STEEL DETAILS - RAMPS B & D STRUCTURE NO. 022-0154 HIGHLAND AVENUE (F.A.U. - 2615) OVER IL. RTE. 56 (BUTTERFIELD RD.), F.A.U. - 3545 SECTION 56R-3(85) DUPAGE COUNTY STA. 8 + 80.92	
REVISIONS		SCALE	DRAWN BY
NAME	DATE	VERT. 5'-8'-0"	G.E.A.
		HORIZ. 5'-8'-0"	CHECKED BY
		DATE 5-8-87	R.B.P.

FILE NAME =	USER NAME = hassan	DESIGNED -	REVISED -
pw\11084EBIDINTEG\11\inois.gov\PIW001\Documents\DOT Offices\District 1\Projects\DI32916-Design\Design\DI32916-Design.dgn		DRAWN -	REVISED -
Default	PLOT SCALE = 100.0000' / in.	CHECKED -	REVISED -
	PLOT DATE = 7/8/2016	DATE -	REVISED -

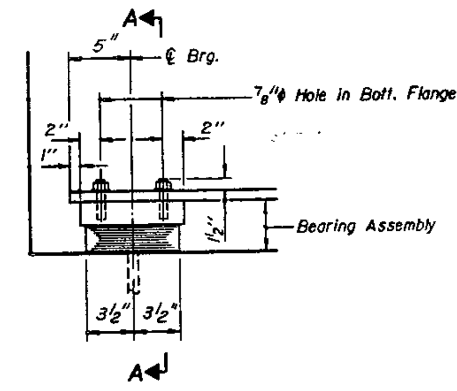
STATE OF ILLINOIS
DEPARTMENT OF TRANSPORTATION

SN 022-0154
FRAMING PLAN & STRUCTURAL STEEL DETAILS

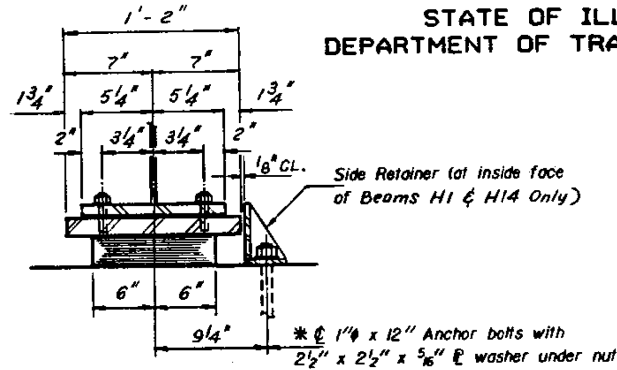
SCALE: SHEET OF SHEETS STA. TO STA.

F.A.P. RTE.	SECTION	COUNTY	TOTAL SHEETS	SHEET NO.
365	2016-0148P	DUPAGE	13	8B
CONTRACT NO. 62C30				
ILLINOIS FED. AID PROJECT				

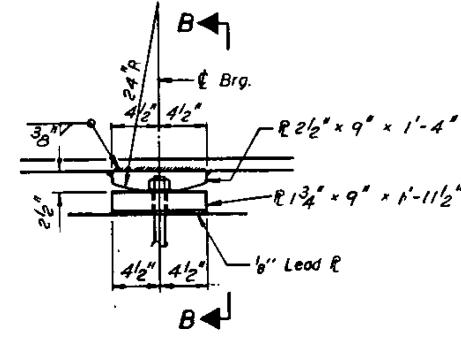
STATE OF ILLINOIS
DEPARTMENT OF TRANSPORTATION



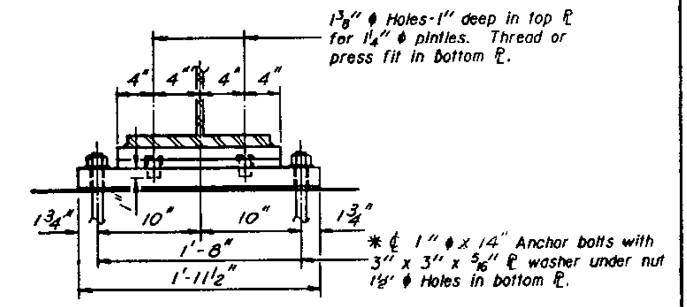
ELEVATION AT ABUT.



SECTION A-A

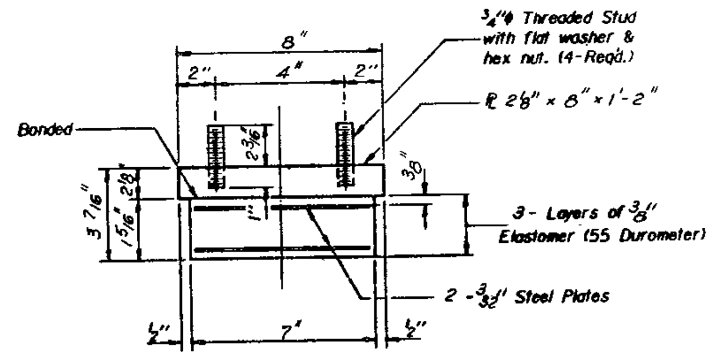


ELEVATION AT PIER



SECTION B-B

TYPE I ELASTOMERIC EXP. BRG.

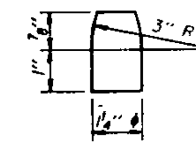


BEARING ASSEMBLY

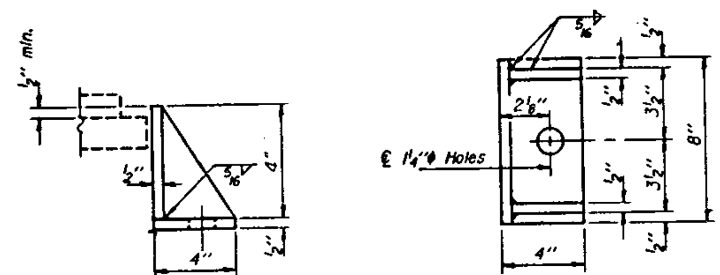
Note: Shim plates shall not be placed under Bearing Assembly.

* Notes: Anchor bolts of fixed bearings may be built into the masonry.
See Sht. No. 45 For Anchor Bolt Installation & Details.

FIXED BEARING



PINTLE



SIDE RETAINER (Beams H1 & H14 Only)

Equivalent rolled angle with stiffeners will be allowed in lieu of welded plates.

DESIGNED
CHECKED
DRAWN
CHECKED

I-2-EI 12-1-83

FILE NAME =	USER NAME = hassan	DESIGNED -	REVISED -
pw\11084EBIDINTEG.111nois.gov\PIWIDT\Documents\IDOT Offices\District 1\Projects\DI32916\Design\DI32916-Design.dgn		CHECKED -	REVISED -
Default	PLOT SCALE = 100.0000' / in.	DATE -	REVISED -
	PLOT DATE = 7/8/2016		

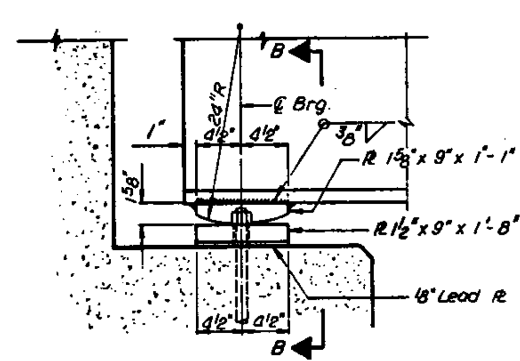
STATE OF ILLINOIS
DEPARTMENT OF TRANSPORTATION

SN 022-0154
BEARINGS DETAILS

SCALE: SHEET OF SHEETS STA. TO STA.

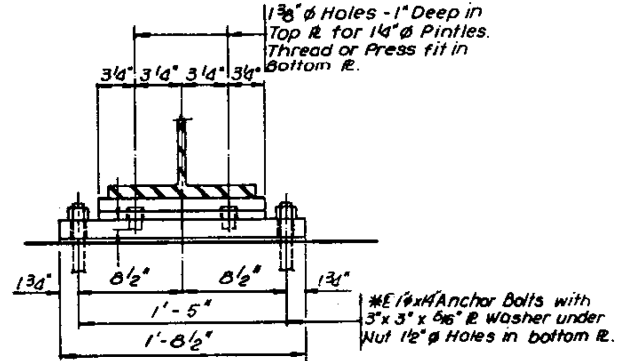
F.A.P. RTE.	SECTION	COUNTY	TOTAL SHEETS	SHEET NO.
365	2016-014BP	DUPAGE	13	9
			CONTRACT NO. 62C30	
ILLINOIS FED. AID PROJECT				

STATE OF ILLINOIS
DEPARTMENT OF TRANSPORTATION



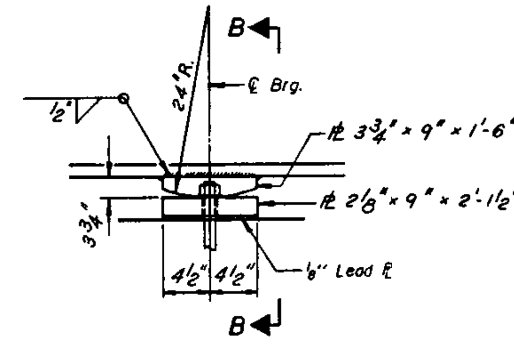
ELEVATION AT ABUTMENT

FIXED BEARING
(Bms. AC & BD)



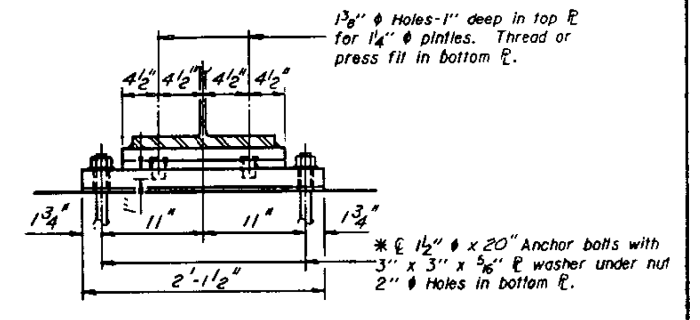
SECTION B-B

* Notes: Anchor bolts at fixed bearings may be built into the masonry.
See Sht. No. 45 for Anchor Bolt Installation & Details.

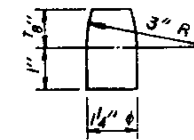


ELEVATION AT PIER
(Bms. AC & BD)

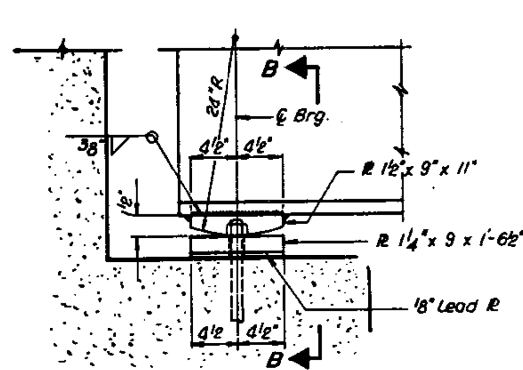
FIXED BEARING
(Bms. AC & BD)



SECTION B-B

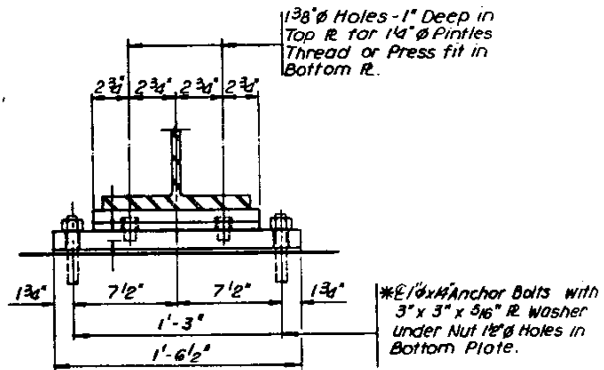


PINTLE



ELEVATION AT ABUTMENT

FIXED BEARING
(Bms. A2 TO A5, B1 TO B4, C2 TO C6 & D1 TO D4)

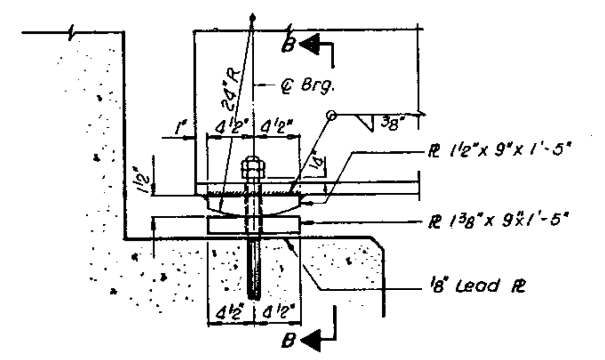


SECTION B-B

DESIGNED
CHECKED
DRAWN
CHECKED

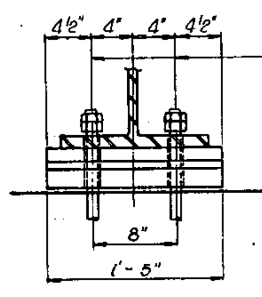
I-2-EI 12-1-83

FILE NAME =	USER NAME = hassann	DESIGNED -	REVISED -	STATE OF ILLINOIS DEPARTMENT OF TRANSPORTATION	SN 022-0154 BEARINGS DETAILS	F.A.P. RTE.	SECTION	COUNTY	TOTAL SHEETS	SHEET NO.
pw\11084EBIDINTEG.illinois.gov\PIWIDOT\Documents\IDOT Offices\District 1\Projects\DI32916-Design.dgn	DRWN	REVISED -	REVISED -			365	2016-014BP	DUPAGE	13	10
PLOT SCALE = 100.0000' / in.	CHECKED -	REVISED -	REVISED -			CONTRACT NO. 62C30				
Default	DATE -	REVISED -	REVISED -			ILLINOIS FED. AID PROJECT				
						SCALE:	SHEET	OF	SHEETS	STA. TO STA.



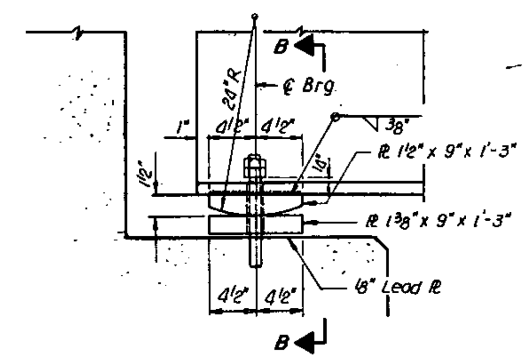
ELEVATION AT ABUTMENT

FIXED BEARING
Bm. C1



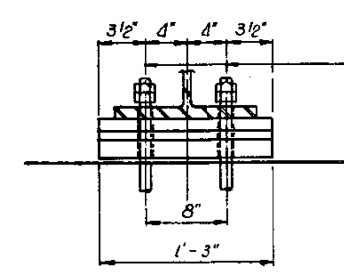
SECTION B-B

* 1/2" ϕ x 23" Anchor Bolts with Hex. Nut and Lock Nut
2" x 3" Slotted Holes in Bottom R, Top R and Bott. Flange



ELEVATION AT ABUTMENT

FIXED BEARING
Bms. A1, B5 & D5



SECTION B-B

* 1/2" ϕ x 23" Anchor Bolts With Hex. Nut and Lock Nut
2" x 3" Slotted Holes in Bottom R, Top R and Bott. Flange

* Notes: Anchor bolts of fixed bearings may be built into the masonry
See Sht. No. 45 for Anchor Bolt Installation & Details.

FILE NAME =	USER NAME = hassann	DESIGNED -	REVISED -
pw\11084EBIDINTEG.illinois.gov\PIWIDOT\Documents\DOT Offices\District 1\Projects\DI32916\Drawings\Design\DI32916-Design.dgn		DRAWN -	REVISED -
Default	PLOT SCALE = 100.0000' / in.	CHECKED -	REVISED -
	PLOT DATE = 7/8/2016	DATE -	REVISED -

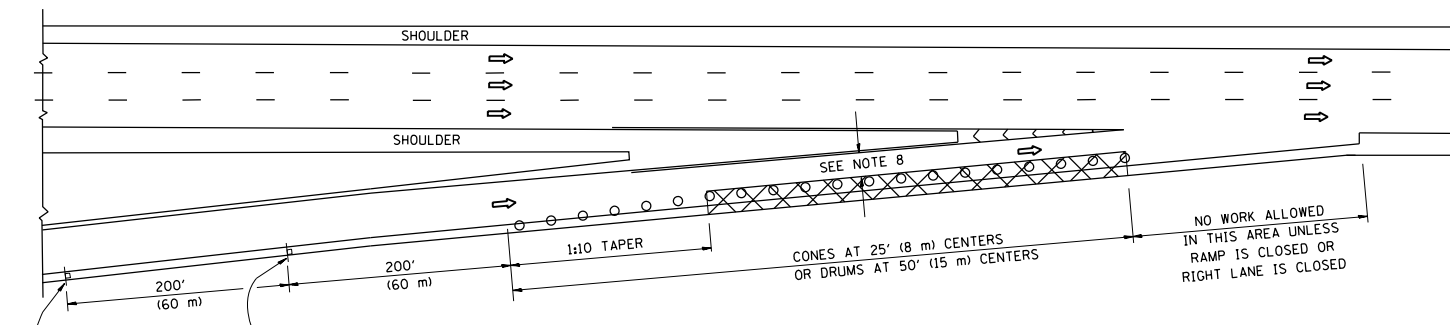
STATE OF ILLINOIS
DEPARTMENT OF TRANSPORTATION

SN 022-0154
BEARINGS DETAILS

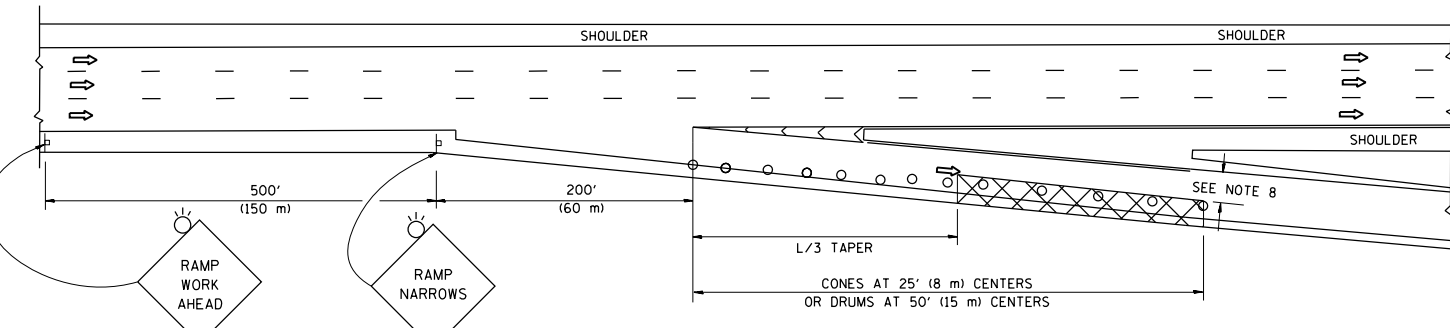
SCALE: SHEET OF SHEETS STA. TO STA.

F.A.P. RTE.	SECTION	COUNTY	TOTAL SHEETS	SHEET NO.
365	2016-014BP	DUPAGE	13	11
				CONTRACT NO. 62C30
ILLINOIS FED. AID PROJECT				

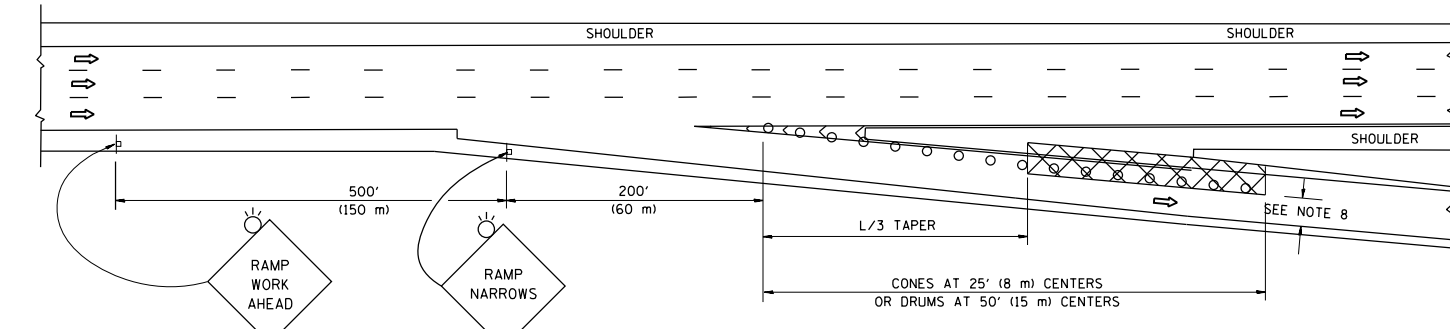
PARTIAL RAMP CLOSURE DETAILS



TYPICAL ENTRANCE RAMP



TYPICAL EXIT RAMP



TYPICAL EXIT RAMP

SYMBOLS

- ACTIVE WORK AREA
- SIGN ON PORTABLE OR PERMANENT SUPPORT
- FLAGGER WITH CONTROL SIGN
- TYPE II BARRICADE OR DRUM WITH STEADY BURN MONO-DIRECTIONAL LIGHT
- CONE, DRUM OR BARRICADE
- IMPACT ATTENUATOR OF TYPE AND TEST LEVEL SPECIFIED

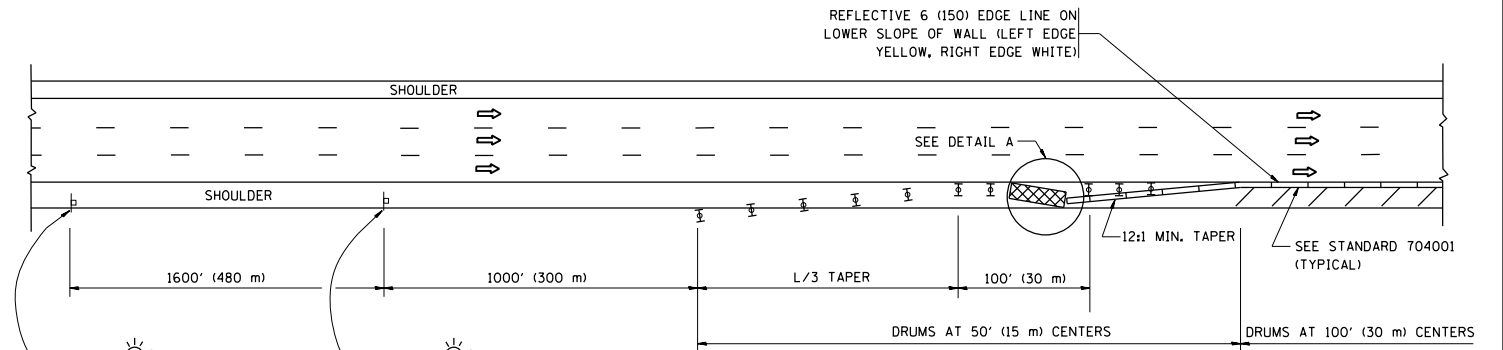
GENERAL NOTES

1. THE "L" DISTANCE EQUALS:

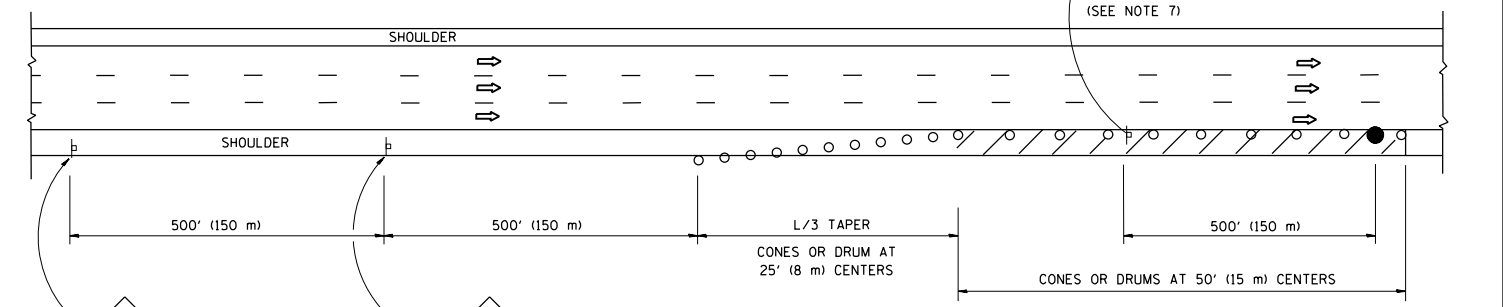
SPEED LIMIT	FORMULAS
45 mph (80 km/h)	METRIC ENGLISH
OR GREATER:	$L=0.65(W)(S)$ $L=(W)(S)$

W = WIDTH OF OFFSET IN FEET (METERS)
 S = NORMAL POSTED SPEED MPH (KM/H)
2. PLASTIC DRUMS WITH HIGH PERFORMANCE REFLECTIVE SHEETING AND STEADY BURNING LIGHTS ARE REQUIRED FOR ALL NIGHTTIME CLOSURES.
3. ALL SIGNS SHALL BE POST MOUNTED IF THE CLOSURE TIME EXCEEDS FOUR DAYS.
4. FLASHING LIGHTS SHALL BE USED DURING THE HOURS OF DARKNESS AND SHALL BE INSTALLED ABOVE THE FIRST TWO SETS OF SIGNS.

SHOULDER CLOSURE DETAILS

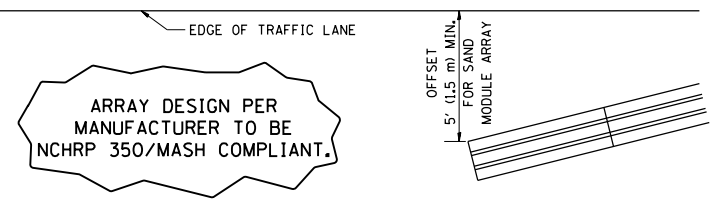


PERMANENT SHOULDER CLOSURE



DAYTIME SHOULDER CLOSURE

THIS DETAIL IS USED WHERE:
 1. VEHICLES, EQUIPMENT, WORKERS OR THEIR ACTIVITIES ENCR OACH IN AN AREA CLOSER THAN 15' (4.5 m) TO THE EDGE OF PAVEMENT FOR A PERIOD IN EXCESS OF 15 MINUTES.



DETAIL "A"
 IMPACT ATTENUATOR, TEMPORARY
 (SEE NOTE 5)

5. THE IMPACT ATTENUATOR, TEMPORARY IS NOT REQUIRED WHEN THE TEMPORARY CONCRETE BARRIER WALL IS PROTECTED BY OR IS TIED INTO THE EXISTING GUARDRAIL. IF OFFSET IS LESS THAN 5 FEET USE NARROW USE TYPE DEVICE TO MEET NCHRP350/MASH.
6. AUTHORIZATION FROM THE DISTRICT'S BUREAU OF TRAFFIC IS REQUIRED FOR ALL FREEWAY CLOSURES.
7. THE FLAGGER AND FLAGGER SIGN ARE REQUIRED AT THE ABOVE WORK SITES WHEN:
 - a. FOUR OR MORE WORK VEHICLES ENTER THE TRAFFIC LANES IN A ONE HOUR PERIOD.
 - b. THE WORK AVTIVITY REQUIRES FREQUENT ENCR OACHMENT INTO THE LANE OPEN TO TRAFFIC.
 THE FLAGGER SHALL BE STATIONED APPROXIMATELY 100' (30 m) TO 200' (60 m) IN ADVANCE OF THE WORKERS.
8. 12' MIN. WIDTH TANGENT SECTION
 16' MIN. WIDTH CURVE SECTION.

ALL DIMENSIONS ARE IN INCHES (MILLIMETERS) UNLESS OTHERWISE SHOWN.

FILE NAME =	USER NAME = hassann	DESIGNED -	REVISED - J.A.F. 12-06	STATE OF ILLINOIS DEPARTMENT OF TRANSPORTATION	TRAFFIC CONTROL DETAILS FOR FREEWAY SHOULDER CLOSURES AND PARTIAL RAMP CLOSURES			F.A.P. RTE.	SECTION	COUNTY	TOTAL SHEETS	SHEET NO.
p:\11\084EBIDINTEG.illinois.gov\PI\DOT\Documents\DOT Offices\District 1\Projects\DI329\Drawings\Design\DWG\16-Design.dgn		CHECKED -	REVISED - S.P.B. 01-07		365	2016-014BP	DuPage	13	12			
PLOT SCALE = 100.0000' / 1in.		DATE -	REVISED - S.P.B. 12-09		TC-17			CONTRACT NO. 62C30				
PLOT DATE = 7/8/2016		11-96	REVISED - M.D. 06-13		SCALE: NONE	SHEET NO. 1 OF 1 SHEETS	STA. TO STA.	FED. ROAD DIST. NO. 1 ILLINOIS FED. AID PROJECT				



NOTES:

1. USE BLACK LETTERING ON ORANGE BACKGROUND.
2. ERECT SIGNS IN ADVANCE OF THE LOCATION FOR THE "ROAD CONSTRUCTION AHEAD" SIGN AT LOCATIONS AS DIRECTED BY THE ENGINEER.
3. ERECT SIGN ① WITH INSTALLED PANEL ② ONE WEEK PRIOR TO THE START OF CONSTRUCTION.
4. REMOVE PANEL ② SOON AFTER THE START OF CONSTRUCTION.
5. SEE SPECIAL PROVISION FOR "TEMPORARY INFORMATION SIGNING" FOR ADDITIONAL INFORMATION.
6. ONE SIGN ASSEMBLY EQUALS 25.70 SQ. FT. (2.3 SQ. M.)
7. SHALL BE PAID FOR AS TEMPORARY INFORMATION SIGNING.

ALL DIMENSIONS ARE IN INCHES (MILLIMETERS) UNLESS OTHERWISE SHOWN.

FILE NAME =	USER NAME = hassann	DESIGNED -	REVISED - R. MIRS 09-15-97	STATE OF ILLINOIS DEPARTMENT OF TRANSPORTATION	ARTERIAL ROAD INFORMATION SIGN	F.A.P. RTE.	SECTION	COUNTY	TOTAL SHEETS	SHEET NO.
p:\11\084EBIDINTEG.illinois.gov\PIWIDOT\Documents\DOT Offices\District 1\Projects\DI32916\Design\DI32916-Design.dgn		CHECKED -	REVISED - R. MIRS 12-11-97			365	2016-014BP	DuPage	13	13
PLOT SCALE = 100.0000' / 1in.		DATE -	REVISED - T. RAMMACHER 02-02-99			TC-22		CONTRACT NO. 62C30		
PLOT DATE = 7/8/2016		REVISED - C. JUCIUS 01-31-07	SCALE: NONE			SHEET NO. 1 OF 1 SHEETS	STA.	TO STA.	FED. ROAD DIST. NO. 1 ILLINOIS FED. AID PROJECT	