

STATE OF ILLINOIS  
DEPARTMENT OF TRANSPORTATION

|           |           |          |                    |           |
|-----------|-----------|----------|--------------------|-----------|
| F.A. RTE. | SECTION   | COUNTY   | TOTAL SHEETS       | SHEET NO. |
| VAR       | 2016-0421 | VARIOUS  | 19                 | 1         |
|           |           | ILLINOIS | CONTRACT NO. 62D25 |           |

\*19 & 1 = 20

D-91-448-16

FOR INDEX OF SHEETS, SEE SHEET NO. 2

# PROPOSED HIGHWAY PLANS

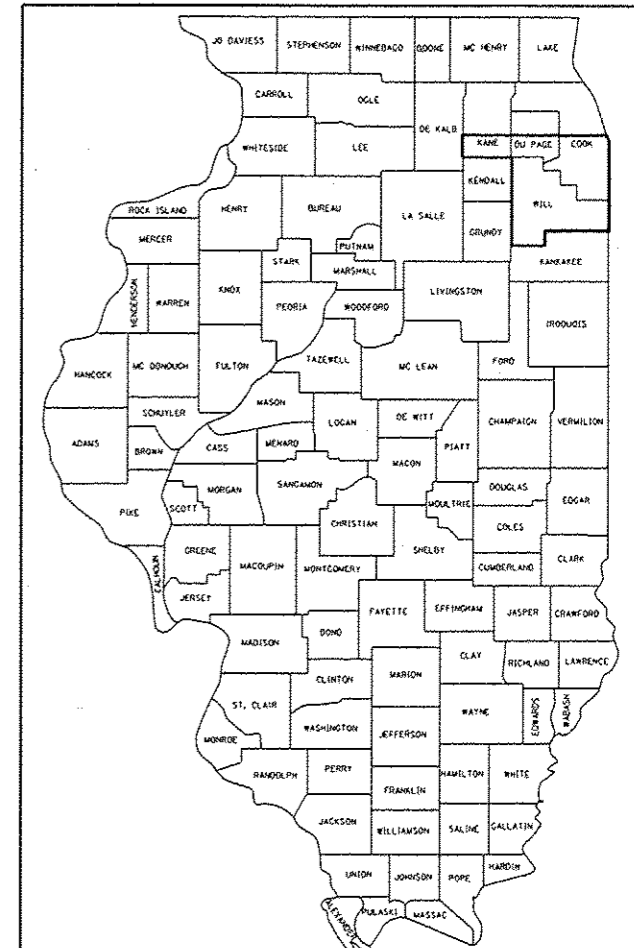
ROUTE: VARIOUS EXPRESSWAYS AND ARTERIAL  
HIGHWAYS – SOUTHERN PART, DISTRICT ONE

SECTION: 2016-0421

FENCE REPAIR

COUNTY: VARIOUS

C-91-448-16



THIS SECTION IS LOCATED ALONG VARIOUS ROUTES WITHIN THE DISTRICT ONE COUNTIES OF Mc HENRY, LAKE, KANE, DU PAGE, COOK AND WILL.

SEE LOCATION MAPS  
SHEETS 4 THRU 12

C.U.A.N.  
CHICAGO UTILITY ALERT NETWORK  
1-312-744-7000

J.U.L.I.E.  
JOINT UTILITY LOCATION INFORMATION FOR EXCAVATION  
1-800-892-0123  
OR 811

PROJECT ENGINEER: J. ALAIN MIDY (847) 221-3056  
PROJECT MANAGER: ISSAM RAYYAN (847) 705-4178

CONTRACT NO. 62D25

STATE OF ILLINOIS  
DEPARTMENT OF TRANSPORTATION

SUBMITTED June 29 2016  
John Fortman  
REGIONAL ENGINEER

Aug 12 2016  
Muhammad M. Adzis P.E.  
ENGINEER OF DESIGN AND ENVIRONMENT

Aug 12 2016  
Amel Al-Ramahi  
DIRECTOR OF PROGRAM DEVELOPMENT

PRINTED BY THE AUTHORITY  
OF THE STATE OF ILLINOIS

**INDEX OF SHEETS**

1. TITLE SHEET
2. INDEX OF SHEETS  
LIST OF APPLICABLE STATE STANDARDS
3. SUMMARY OF QUANTITIES
4. COOK COUNTY (SOUTH OF ILL 38) LOCATION MAP
5. DUPAGE COUNTY (SOUTH OF ILL 38) LOCATION MAP
6. KANE COUNTY (SOUTH OF ILL 38) LOCATION MAP
7. WILL COUNTY LOCATION MAP
8. COOK COUNTY (NORTH OF ILL 38) LOCATION MAP
9. DUPAGE COUNTY (NORTH OF ILL 38) LOCATION MAP
10. KANE COUNTY (NORTH OF ILL 38) LOCATION MAP
11. LAKE COUNTY LOCATION MAP
12. MCHENRY COUNTY LOCATION MAP
13. DETAILS OF PEDESTRIAN BARRIER TYPE III (STD. 10-SS-514R)
14. CHAIN LINK FENCE (STD. 10-SS-506B)
15. CHAIN LINK FENCE POST SLEEVE REPAIR DETAIL
16. PROPOSED PEDESTRIAN BARRIER AND CHAIN LINK FENCE  
WITH TENSION WIRE AND FENCE RAIL REMOVAL
17. SPECIAL FENCE DETAILS
- 17A. ENTRANCE AND EXIT RAMP CLOSURE DETAILS (TC-08)
18. TRAFFIC CONTROL AND PROTECTION FOR SIDE ROADS,  
INTERSECTIONS AND DRIVEWAYS (TC-10)
19. TRAFFIC CONTROL DETAILS FOR SHOULDER CLOSURE AND  
PARTIAL RAMP CLOSURES (TC-17)

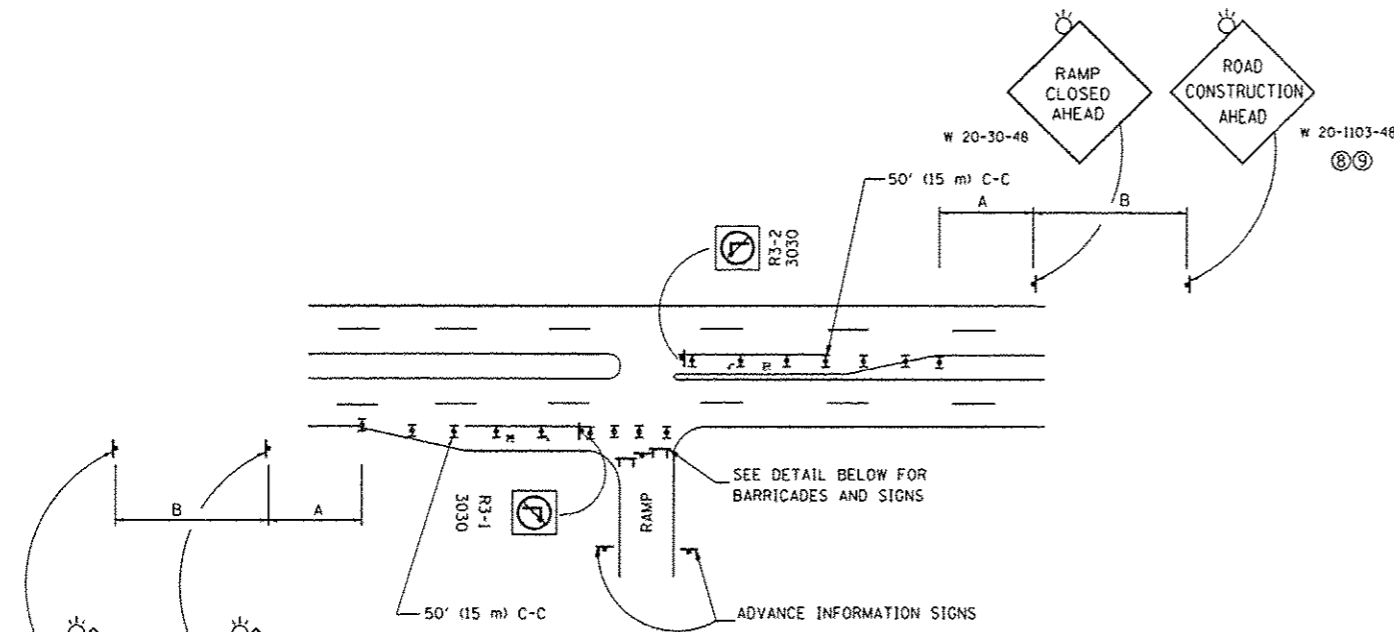
**GENERAL NOTES**

1. BEFORE STARTING ANY EXCAVATION, THE CONTRACTOR SHALL CALL "J.U.L.I.E." AT (800) 892-0123 OR 811 FOR FIELD LOCATIONS OF BURIED ELECTRIC, TELEPHONE AND GAS UTILITIES. 48 HOUR NOTIFICATION IS REQUIRED.
2. THE CONTRACTOR SHALL CONTACT THE DISTRICT ONE TRAFFIC CONTROL SUPERVISOR AT (847) 705-4155 FOR EXPRESSWAYS AND (847) 705-4470 FOR ARTERIALS, A MINIMUM OF 72 HOURS IN ADVANCE OF BEGINNING WORK.

|           |   |
|-----------|---|
| 664001-02 | CHAIN LINK FENCE  |
| 665001-02 | WOVEN WIRE FENCE  |
| 701001-02 | OFF-RD OPERATIONS, 2L, 2W, MORE THAN 15' AWAY                               |
| 701006-05 | OFF-RD OPERATIONS, 2L, 2W, 15' TO 24" FROM PAVEMENT EDGE                    |
| 701101-05 | OFF-RD OPERATIONS, MULTILANE, 15' TO 24" FROM PAVEMENT EDGE                 |
| 701106-02 | OFF-RD OPERATIONS, MULTILANE, MORE THAN 15' AWAY                            |
| 701301-04 | LANE CLOSURE, 2L, 2W, SHORT TIME OPERATIONS                                 |
| 701311-03 | LANE CLOSURE, 2L, 2W, MOVING OPERATIONS DAY ONLY                            |
| 701336-06 | LANE CLOSURE, 2L, 2W, WORK AREAS IN SERIES, FOR SPEEDS > 45 MPH             |
| 701400-08 | APPROACH TO LANE CLOSURE, FREEWAY/EXPRESSWAY                                |
| 701401-09 | LANE CLOSURE, FREEWAY/EXPRESSWAY  |
| 701411-09 | LANE CLOSURE, MULTILANE, AT ENTRANCE OR EXIT RAMP, FOR SPEEDS > 45 MPH      |
| 701421-07 | LANE CLOSURE, MULTILANE, DAY OPERATIONS ONLY, FOR SPEEDS > 45 MPH TO 55 MPH |
| 701422-08 | LANE CLOSURE, MULTILANE, FOR SPEEDS > 45 MPH TO 55 MPH                      |
| 701427-04 | LANE CLOSURE, MULTILANE, INTERMITTANT OR MOVING OPERATIONS < 40 MPH         |
| 701501-06 | URBAN LANE CLOSURE, 2L, 2W, UNDIVIDED                                       |
| 701601-09 | URBAN LANE CLOSURE, MULTILANE, 1W OR 2W, WITH NONTRAVERSABLE MEDIAN         |
| 701602-07 | URBAN LANE CLOSURE, MULTILANE, 2W WITH BIDIRECTIONAL LEFT TURN LANE         |
| 701606-10 | URBAN LANE CLOSURE, MULTILANE, 2W WITH MOUNTABLE MEDIAN                     |
| 701701-10 | URBAN LANE CLOSURE, MULTILANE INTERSECTION                                  |
| 701801-06 | SIDEWALK, CORNER OR CROSSWALK CLOSURE                                       |
| 701901-05 | TRAFFIC CONTROL DEVICES   |

*Rev. 8-31-16*

|             |   |            |           |   |  |                                     |           |                    |              |           |  |
|-------------|---|------------|-----------|---|--|-------------------------------------|-----------|--------------------|--------------|-----------|--|
| FILE NAME * | USER NAME *   | DESIGNED - | REVISED - | <b>STATE OF ILLINOIS<br/>DEPARTMENT OF TRANSPORTATION</b> | <b>INDEX OF SHEETS AND STATE STANDARDS</b> | F.A. RTE.                           | SECTION   | COUNTY             | TOTAL SHEETS | SHEET NO. |  |
| Default     | Documents\DOT Offices\District 1\Projects\DI4816\BROWNS\Design\DI4816-shr\plendgn | CHECKED -  | REVISED - |   |  | VAR                                 | 2016-0421 | VARIOUS            | 19           | 2         |  |
|             | PLOT SCALE * 100.0000' / 1" = 100'  | DATE -     | REVISED - |   |  | SCALE: SHEET OF SHEETS STA. TO STA. |           | CONTRACT NO. 62D25 |              |           |  |
|             | PLOT DATE * 7/14/2016   |            |           |   |  | ILLINOIS FED. AID PROJECT           |           |                    |              |           |  |

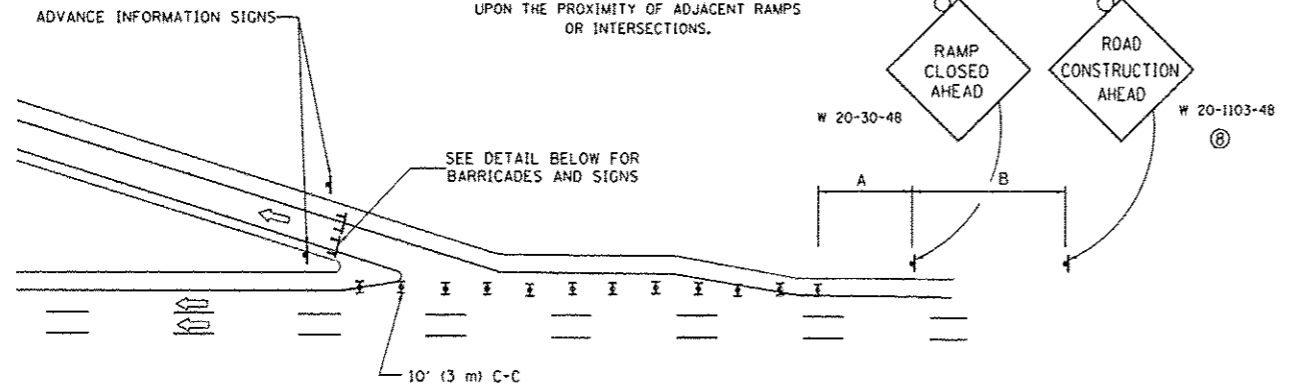
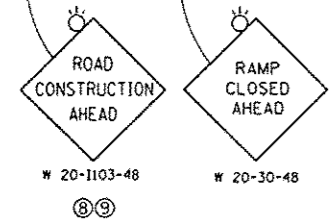


**ENTRANCE RAMP CLOSURE**

**SIGN SPACING TABLE**

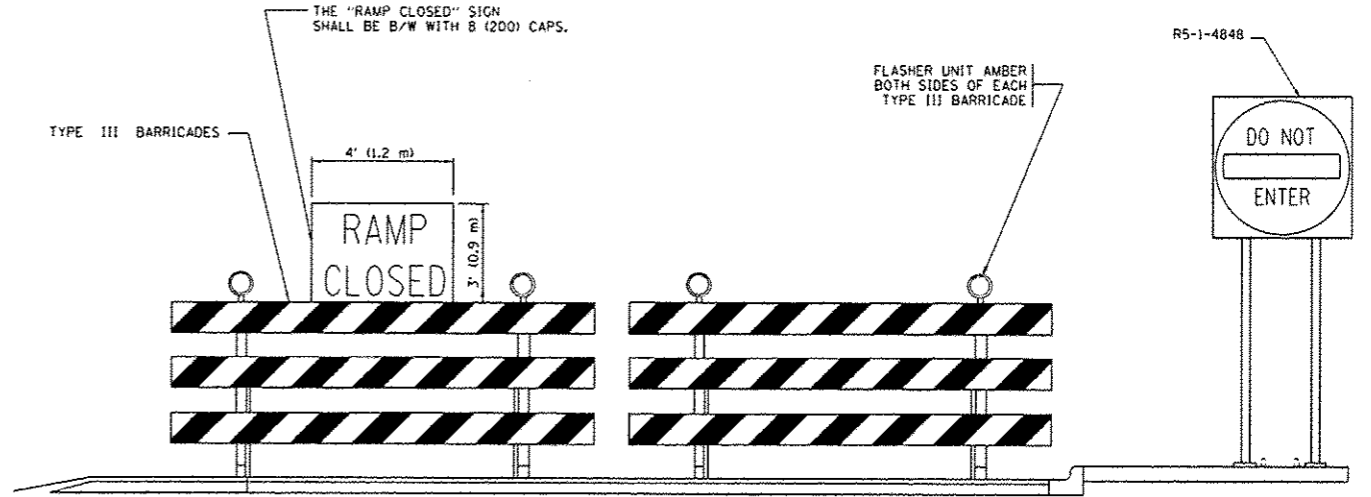
| FACILITY             | DISTANCE BETWEEN SIGNS |               |
|----------------------|------------------------|---------------|
|                      | A                      | B             |
| EXPRESSWAY >24 HOURS | 1000' (300 m)          | 1500' (450 m) |
| EXPRESSWAY <24 HOURS | 500' (150 m)           | 500' (150 m)  |
| ARTERIAL 55 MPH      | 500' (150 m)           | 500' (150 m)  |
| ARTERIAL 50-45 MPH   | 350' (100 m)           | 350' (100 m)  |
| ARTERIAL <45 MPH     | 200' (60 m)            | 200' (60 m)   |

DISTANCES MAY BE SHORTENED DEPENDING UPON THE PROXIMITY OF ADJACENT RAMPS OR INTERSECTIONS.



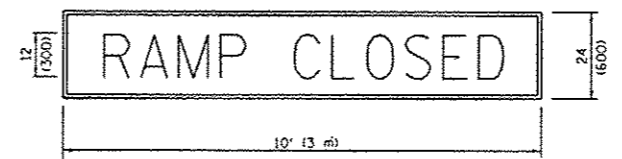
**EXIT RAMP CLOSURE**

- SYMBOLS**
- II TYPE II BARRICADE OR DRUM WITH STEADY BURN MONO-DIRECTIONAL LIGHT
  - III TYPE III BARRICADE WITH 2 FLASHING LIGHTS



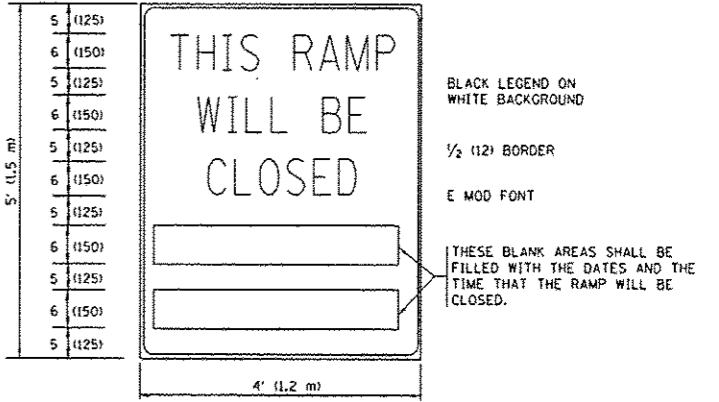
**DETAIL FOR REQUIRED BARRICADES & SIGNS**

**RAMP CLOSURE ADVANCE WARNING SIGN**



BLACK LEGEND ON ORANGE BACKGROUND MOUNTED DIAGONALLY E MOD FONT 1 (25) BORDER  
 THESE SIGNS ARE REQUIRED ON ALL THE EXIT GUIDE SIGNS FOR EXIT RAMPS THAT WILL BE CLOSED FOR MORE THAN FOUR (4) CONSECUTIVE DAYS.

**RAMP CLOSURE ADVANCE INFORMATION SIGN**



BLACK LEGEND ON WHITE BACKGROUND  
 1/2 (12) BORDER  
 E MOD FONT  
 THESE BLANK AREAS SHALL BE FILLED WITH THE DATES AND THE TIME THAT THE RAMP WILL BE CLOSED.

THESE SIGNS ARE REQUIRED ON BOTH SIDES OF THE RAMP, MINIMUM OF 1 WEEK IN ADVANCE OF THE CLOSURE.  
 THESE SIGNS SHALL BE FABRICATED AND PAID FOR ACCORDING TO THE TEMPORARY INFORMATION SIGNING SPECIAL PROVISION

**GENERAL NOTES:**

- CONES MAY BE SUBSTITUTED FOR DRUMS OR TYPE II BARRICADES DURING DAY OPERATIONS. CONES SHALL BE A MINIMUM OF 28 (700) HIGH.
- STEADY BURN LIGHTS WILL NOT BE REQUIRED FOR DAY OPERATIONS.
- A FLAGGER SHALL BE POSITIONED AT EACH CLOSED RAMP THAT IS OPEN TO CONSTRUCTION VEHICLES, PRECEDED BY A W20-7 FLAGGER WARNING SIGN.
- ALL ROUTE MARKERS AND TRAILBLAZER ASSEMBLIES WHICH DIRECT MOTORISTS TO A CLOSED ENTRANCE RAMP SHALL BE COVERED WHEN THE RAMP IS CLOSED FOR MORE THAN FOUR (4) DAYS.
- THE SIGNING AND BARRICADING WHICH IS REQUIRED BY THIS DETAIL SHALL BE INCLUDED IN THE COST OF TRAFFIC CONTROL AND PROTECTION (EXPRESSWAYS).
- AUTHORIZATION FROM THE DISTRICT'S BUREAU OF TRAFFIC IS REQUIRED FOR ALL RAMP CLOSURES.
- THE RAMP CLOSURE ADVANCE INFORMATION SIGNS SHALL BE ERECTED IF THE CLOSURE TIME EXCEEDS TWENTY-FOUR (24) HOURS. ADDITIONAL ADVANCE WARNING SIGNS ON EXIT GUIDE SIGNING WILL BE REQUIRED FOR EXIT RAMP CLOSURES THAT EXCEED FOUR (4) DAYS IN LENGTH.
- ROAD CONSTRUCTION AHEAD SIGNS MAY BE OMITTED WHEN THIS DETAIL IS USED IN CONJUNCTION WITH OTHER TRAFFIC CONTROL THAT ALREADY INCLUDES A ROAD CONSTRUCTION AHEAD SIGN.
- ARTERIAL ROAD CONSTRUCTION AHEAD SIGNS SHALL BE INSTALLED ON THE LEFT SIDE OF TRAFFIC IF THE MEDIAN IS MORE THAN 10 FT WIDE.

**Added Sheet 8-31-16**

ALL DIMENSIONS ARE IN INCHES (MILLIMETERS) UNLESS OTHERWISE SHOWN.