

STATE OF ILLINOIS
DEPARTMENT OF TRANSPORTATION

P.A. RTE.	SECTION	COUNTY	TOTAL SHEETS	SHEET NO.
VAR	2016-0431	VARIOUS	19	1
		ILLINOIS	CONTRACT NO. 62D26	

FOR INDEX OF SHEETS, SEE SHEET NO. 2

PROPOSED HIGHWAY PLANS

ROUTE: VARIOUS EXPRESSWAYS AND ARTERIAL
HIGHWAYS – NORTHERN PART, DISTRICT ONE

SECTION: 2016-0431

FENCE REPAIR

COUNTY: VARIOUS

C-91-449-16



**SEE LOCATION MAPS
SHEETS 4 THRU 12**

C.U.A.N.
CHICAGO UTILITY ALERT NETWORK
1-312-744-7000

J.U.L.I.E.
JOINT UTILITY LOCATION INFORMATION FOR EXCAVATION
1-800-892-0123
OR 811

PROJECT ENGINEER: J. ALAIN MIDY (847) 221-3056
PROJECT MANAGER: ISSAM RAYYAN (847) 705-4178

CONTRACT NO. 62D26

STATE OF ILLINOIS
DEPARTMENT OF TRANSPORTATION

SUBMITTED June 29 2016

John F. [Signature]
REGIONAL ENGINEER

Aug 12 2016
Matthew M. Addis, P.E.
ENGINEER OF DESIGN AND ENVIRONMENT

Aug 12 2016
[Signature]
DIRECTOR OF PROGRAM DEVELOPMENT

**PRINTED BY THE AUTHORITY
OF THE STATE OF ILLINOIS**

INDEX OF SHEETS

1. TITLE SHEET
2. INDEX OF SHEETS
LIST OF APPLICABLE STATE STANDARDS
3. SUMMARY OF QUANTITIES
4. COOK COUNTY (NORTH OF ILL 38) LOCATION MAP
5. DUPAGE COUNTY (NORTH OF ILL 38) LOCATION MAP
6. KANE COUNTY (NORTH OF ILL 38) LOCATION MAP
7. LAKE COUNTY LOCATION MAP
8. MC HENRY COUNTY LOCATION MAP
9. COOK COUNTY (SOUTH OF ILL 38) LOCATION MAP
10. DUPAGE COUNTY (SOUTH OF ILL 38) LOCATION MAP
11. KANE COUNTY (SOUTH OF ILL 38) LOCATION MAP
12. WILL COUNTY LOCATION MAP
13. DETAILS OF PEDESTRIAN BARRIER TYPE III (STD. 10-SS-514R)
14. CHAIN LINK FENCE (STD. 10-SS-506B)
15. CHAIN LINK FENCE POST SLEEVE REPAIR DETAIL
16. PROPOSED PEDESTRIAN BARRIER AND CHAIN LINK FENCE
WITH TENSION WIRE AND FENCE RAIL REMOVAL
17. SPECIAL FENCE DETAILS
18. TRAFFIC CONTROL AND PROTECTION FOR SIDE ROADS,
INTERSECTIONS AND DRIVEWAYS (TC-10)
19. TRAFFIC CONTROL DETAILS FOR SHOULDER CLOSURE AND
PARTIAL RAMP CLOSURES (TC-17)

GENERAL NOTE

THE CONTRACTOR SHALL CONTACT THE DISTRICT ONE TRAFFIC CONTROL SUPERVISOR AT (847) 705-4155 FOR EXPRESSWAYS AND (847) 705-4470 FOR ARTERIALS, A MINIMUM OF 72 HOURS IN ADVANCE OF BEGINNING WORK.

THE CONTRACTOR SHALL CALL ELECTRICAL MAINTENANCE CONTRACTOR TO LOCATE UNDERGROUND ELECTRICAL CABLE AND/OR FIBER PRIOR TO DIGGING TO REPAIR OR REPLACE FENCE POSTS.

STATE STANDARDS

- 664001-02
- 665001-02
- 701001-02
- 701006-05
- 701101-05
- 701106-02
- 701201-04
- 701301-04
- 701311-03
- 701421-07
- 701422-08
- 701426-08
- 701427-04
- 701501-06
- 701601-09
- 701606-10
- 701701-10
- 701801-06
- 701901-05

DESCRIPTION

- CHAIN LINK FENCE
- WOVEN WIRE FENCE
- OFF-RD OPERATIONS, 2L, 2W, MORE THAN 15' AWAY
- OFF-RD OPERATIONS, 2L, 2W, 15' TO 24" FROM PAVEMENT EDGE
- OFF-RD OPERATIONS, MULTILANE, 15' TO 24" FROM PAVEMENT EDGE
- OFF-RD OPERATIONS, MULTILANE, MORE THAN 15' AWAY
- LANE CLOSURE, 2L, 2W, DAY ONLY, FOR SPEEDS > 45 MPH
- LANE CLOSURE, 2L, 2W, SHORT TIME OPERATIONS
- LANE CLOSURE, 2L, 2W, MOVING OPERATIONS DAY ONLY
- LANE CLOSURE, MULTILANE, DAY OPERATIONS ONLY, FOR SPEEDS > 45 MPH TO 55 MPH
- LANE CLOSURE, MULTILANE, FOR SPEEDS > 45 MPH TO 55 MPH
- LANE CLOSURE, MULTILANE, INTERMITTANT OR MOVING OPERATIONS > 45 MPH 55 MPH
- LANE CLOSURE, MULTILANE, INTERMITTANT OR MOVING OPERATIONS < 40 MPH
- URBAN LANE CLOSURE, 2L, 2W, UNDIVIDED
- URBAN LANE CLOSURE, MULTILANE, 1W OR 2W, WITH NONTRAVERSABLE MEDIAN
- URBAN LANE CLOSURE, MULTILANE, 2W WITH MOUNTABLE MEDIAN
- URBAN LANE CLOSURE, MULTILANE INTERSECTION
- SIDEWALK, CORNER OR CROSSWALK CLOSURE
- TRAFFIC CONTROL DEVICES

FILE NAME :	USER NAME : pyzanoskiurb	DESIGNED -	REVISED -	STATE OF ILLINOIS DEPARTMENT OF TRANSPORTATION	INDEX OF SHEETS, STATE STANDARDS AND GENERAL NOTES				F.A. RTE.	SECTION	COUNTY	TOTAL SHEETS	SHEET NO.		
pm\11084610\INTEG\illinois.gov\PI\007\00	Documents\DOT Office\District 1\Projects\01305\000000\000000\Design\0130515-ent-plan.dgn	CHECKED -	REVISED -		SCALE:	SHEET	OF	SHEETS	STA.	TO STA.	VAR	2016-043I	VARIOUS	19	2
Default	PLOT SCALE * 100.0000 ' / in	DATE -	REVISED -										CONTRACT NO. 62026		
	PLOT DATE * 6/15/2016												ILLINOIS FED. AID PROJECT		

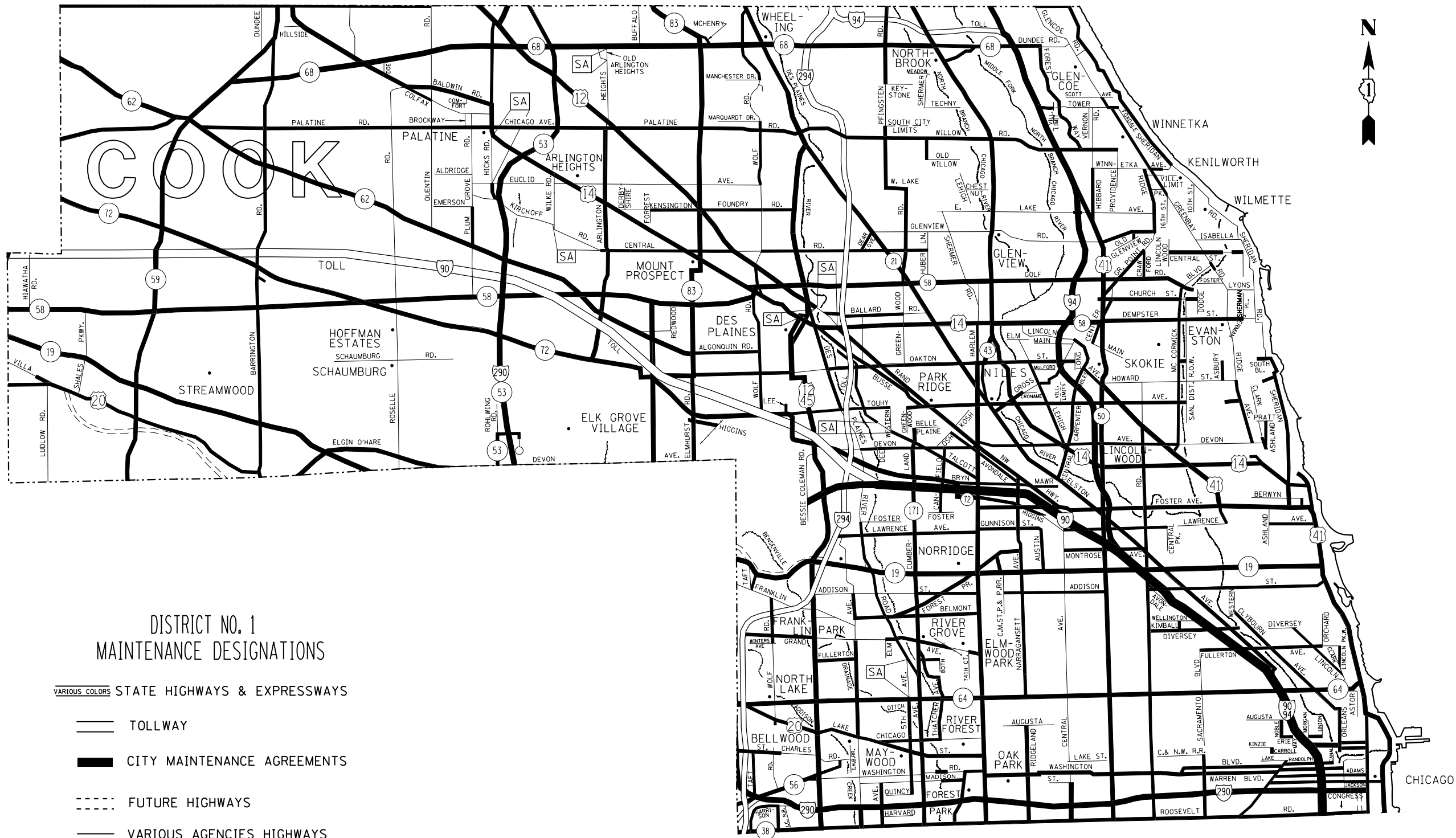
SUMMARY OF QUANTITIES						CONSTRUCTION TYPE CODE: 0021					
CODE NO	ITEM	UNIT	TOTAL QUANTITIES	CONT. MAINT. 0021	MCHD 0021						
66400505	CHAIN LINK FENCE, 8'	FOOT	111	83	28						
66500105	WOVEN WIRE FENCE, 4'	FOOT	11	8	3						
X6640100	FENCE RAIL REMOVAL	FOOT	1023	767	256						
X6640300	CHAIN LINK FENCE REMOVAL	FOOT	26	20	6						
X6640309	CHAIN LINK GATES (SPECIAL)	SQ FT	448	336	112						
X6640590	CHAIN LINK FENCE POST SLEEVE REPAIR	EACH	26	20	6						
Z0009600	CHAIN LINK FABRIC, SPECIAL, 5'-0"	FOOT	14	10	4						
Z0009700	CHAIN LINK FABRIC, SPECIAL, 6'-0"	FOOT	1279	959	320						
Z0009800	CHAIN LINK FABRIC, SPECIAL, 7'-0"	FOOT	6	4	2						
Z0009810	CHAIN LINK FABRIC, SPECIAL, 8'-0"	FOOT	40	30	10						
Z0009900	CHAIN LINK FABRIC, TYPE 1, 4'-0"	FOOT	10735	8051	2684						
Z0010300	CHAIN LINK FABRIC, TYPE 3, SPECIAL	FOOT	256	192	64						
Z0020210	PULL POST ARRANGEMENT	EACH	2	1	1						
Z0033200	LINE POST, TYPE 1	EACH	461	346	115						
Z0033305	LINE POST, TYPE 3 SPECIAL	EACH	14	10	4						
Z0042500	POST, SPECIAL	EACH	72	54	18						

URBAN
100%
STATE

URBAN
100%
STATE

16

FILE NAME : D:\IN\LOG\BID\INTECH\InDesign\PWIDOT-Documents\007	USER NAME : jprzener@itb Office of State Projects\044916\0400\In Design\044916	DESIGNED - DRAWN -	REVISED - REVISED -	STATE OF ILLINOIS DEPARTMENT OF TRANSPORTATION				SUMMARY OF QUANTITIES				F.A. RTE. VAR	SECTION 2016-0431	COUNTY VARIOUS	TOTAL SHEETS 19	SHEET NO. 3		
PLT SCALE * 100.0000 / in	CHECKED -	REVISED -	SCALE:									SHEET NO.	OF	SHEETS	STA.	TO STA.	FED. ROAD DIST. NO. 1	ILLINOIS FED. AID PROJECT
PLT DATE * 6/23/2016	DATE -	REVISED -	CONTRACT NO. 62D26															



DISTRICT NO. 1
MAINTENANCE DESIGNATIONS

VARIOUS COLORS STATE HIGHWAYS & EXPRESSWAYS

- TOLLWAY
- CITY MAINTENANCE AGREEMENTS
- FUTURE HIGHWAYS
- VARIOUS AGENCIES HIGHWAYS

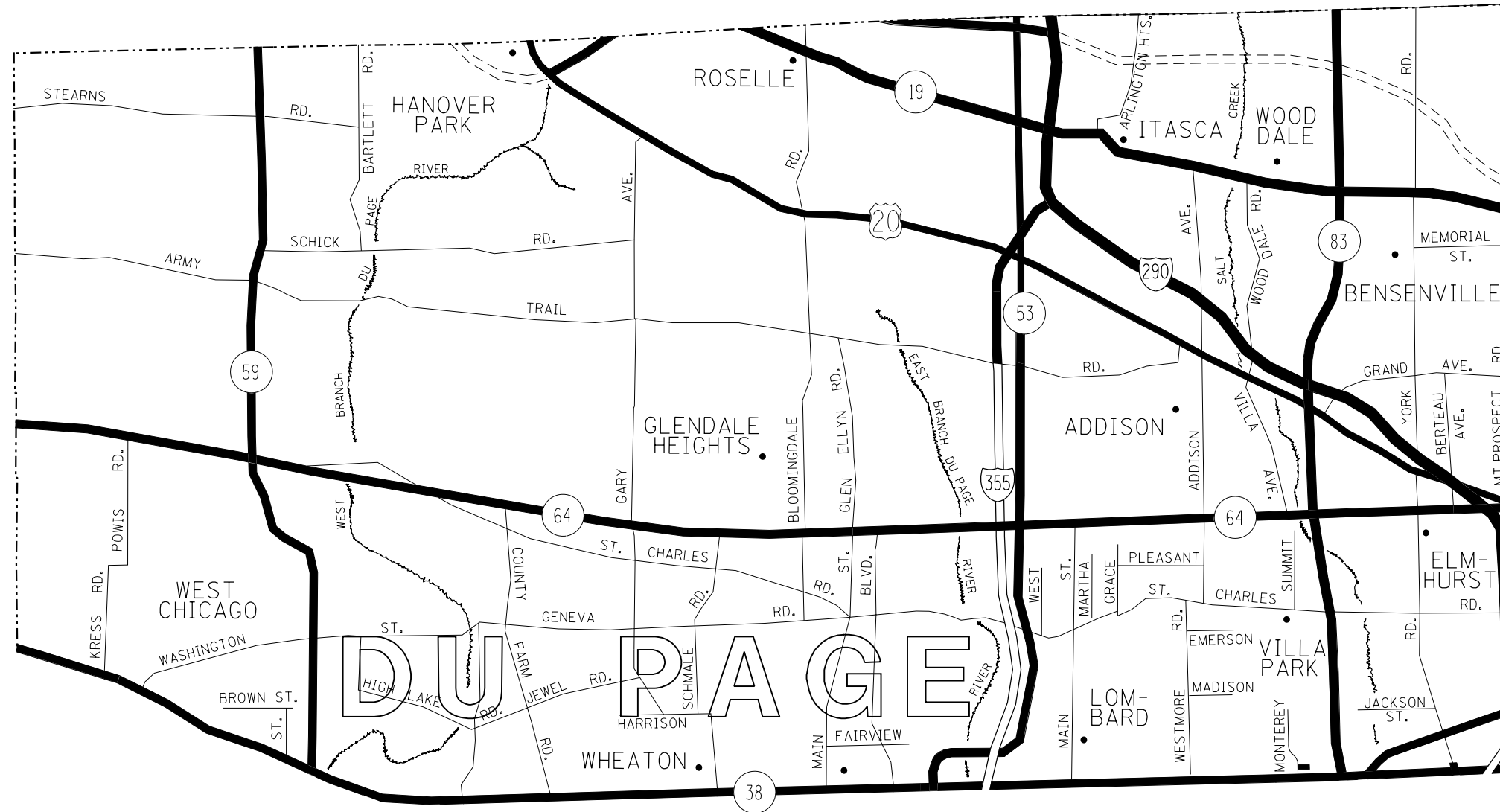
FILE NAME =	USER NAME = pyrzenowski	DESIGNED -	REVISED -
p:\11084EBID\INTEG\illinois.gov\PIWIDOT\Documents\IDOT Offices\District 1\Projects\DI385\Mapa\Design\DI38515-sht-plan.dgn		REVISED -	REVISED -
Default	PLOT SCALE = 100.0000' / in.	CHECKED -	REVISED -
	DATE = 6/15/2016	DATE -	REVISED -

STATE OF ILLINOIS
DEPARTMENT OF TRANSPORTATION

FENCE REPAIR LOCATION MAP - COOK COUNTY
SOUTH OF IL RTE 38

SCALE: SHEET OF SHEETS STA. TO STA.

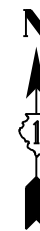
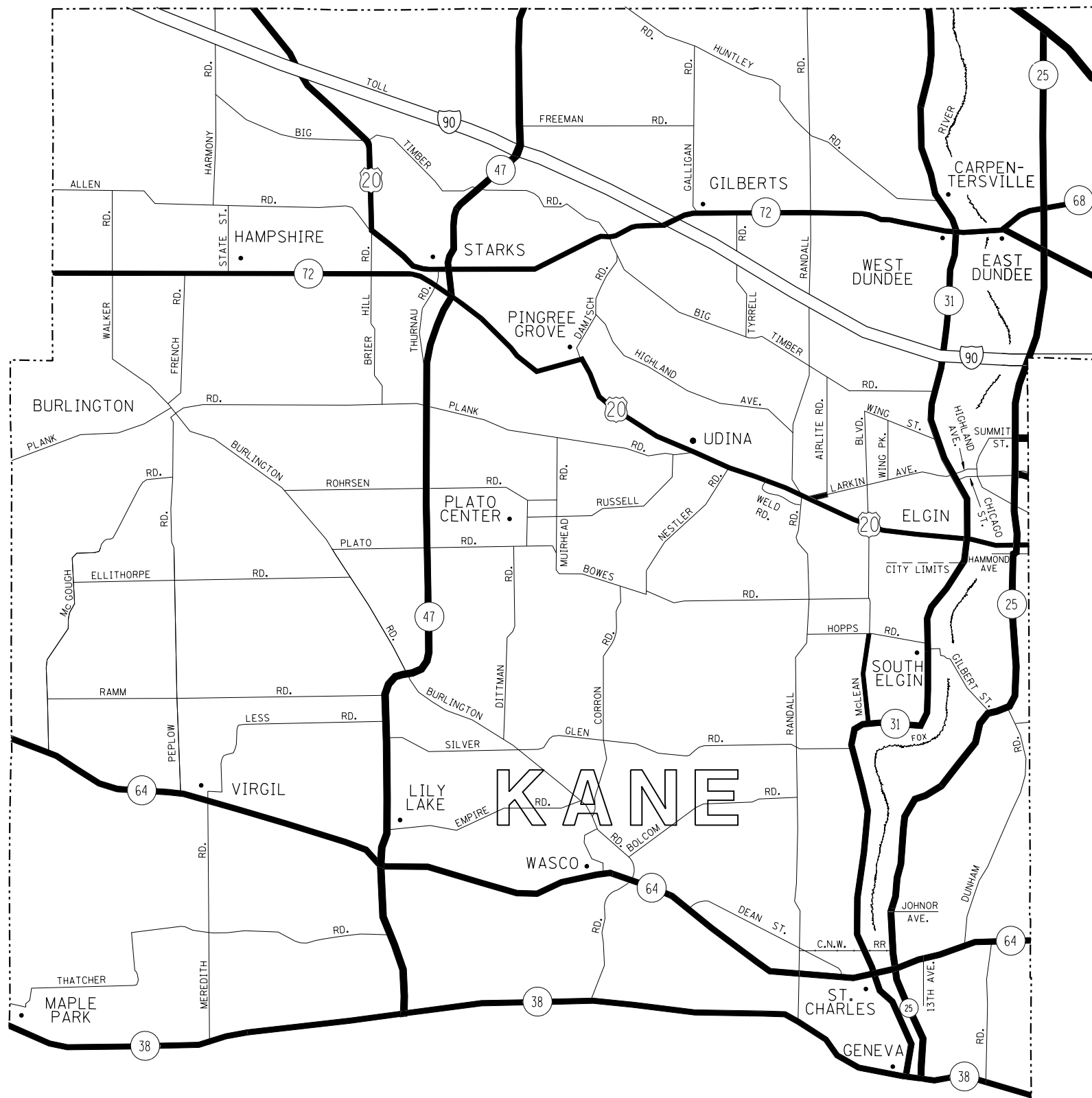
F.A. RTE.	SECTION	COUNTY	TOTAL SHEETS	SHEET NO.
VAR	2016-043I	VARIOUS	19	4
CONTRACT NO. 62D26				
ILLINOIS FED. AID PROJECT				



DISTRICT NO. 1
MAINTENANCE DESIGNATIONS

- VARIOUS COLORS STATE HIGHWAYS & EXPRESSWAYS
- TOLLWAY
- CITY MAINTENANCE AGREEMENTS
- FUTURE HIGHWAYS
- VARIOUS AGENCIES HIGHWAYS

FILE NAME =	USER NAME = pyzzenowskirb	DESIGNED -	REVISED -	STATE OF ILLINOIS DEPARTMENT OF TRANSPORTATION	FENCE REPAIR LOCATION MAP - DuPAGE COUNTY SOUTH OF IL RTE 38	F.A. RTE.	SECTION	COUNTY	TOTAL SHEETS	SHEET NO.	
pw:\IL\084EBIDINTEG\Illinois.gov\PWIDOT\Documents\DOT Offices\District 1\Projects\DI385\Drawings\Design\DI38515-sht-plan.dgn						VAR	2016-043I	VARIOUS	19	5	
PLOT SCALE = 100.0000' / in.						CONTRACT NO. 62D26					
PLOT DATE = 6/15/2016						ILLINOIS FED. AID PROJECT					
					SCALE:	SHEET	OF	SHEETS	STA.	TO	STA.



DISTRICT NO. 1
MAINTENANCE DESIGNATIONS

- VARIOUS COLORS STATE HIGHWAYS & EXPRESSWAYS
- TOLLWAY
- CITY MAINTENANCE AGREEMENTS
- FUTURE HIGHWAYS
- VARIOUS AGENCIES HIGHWAYS

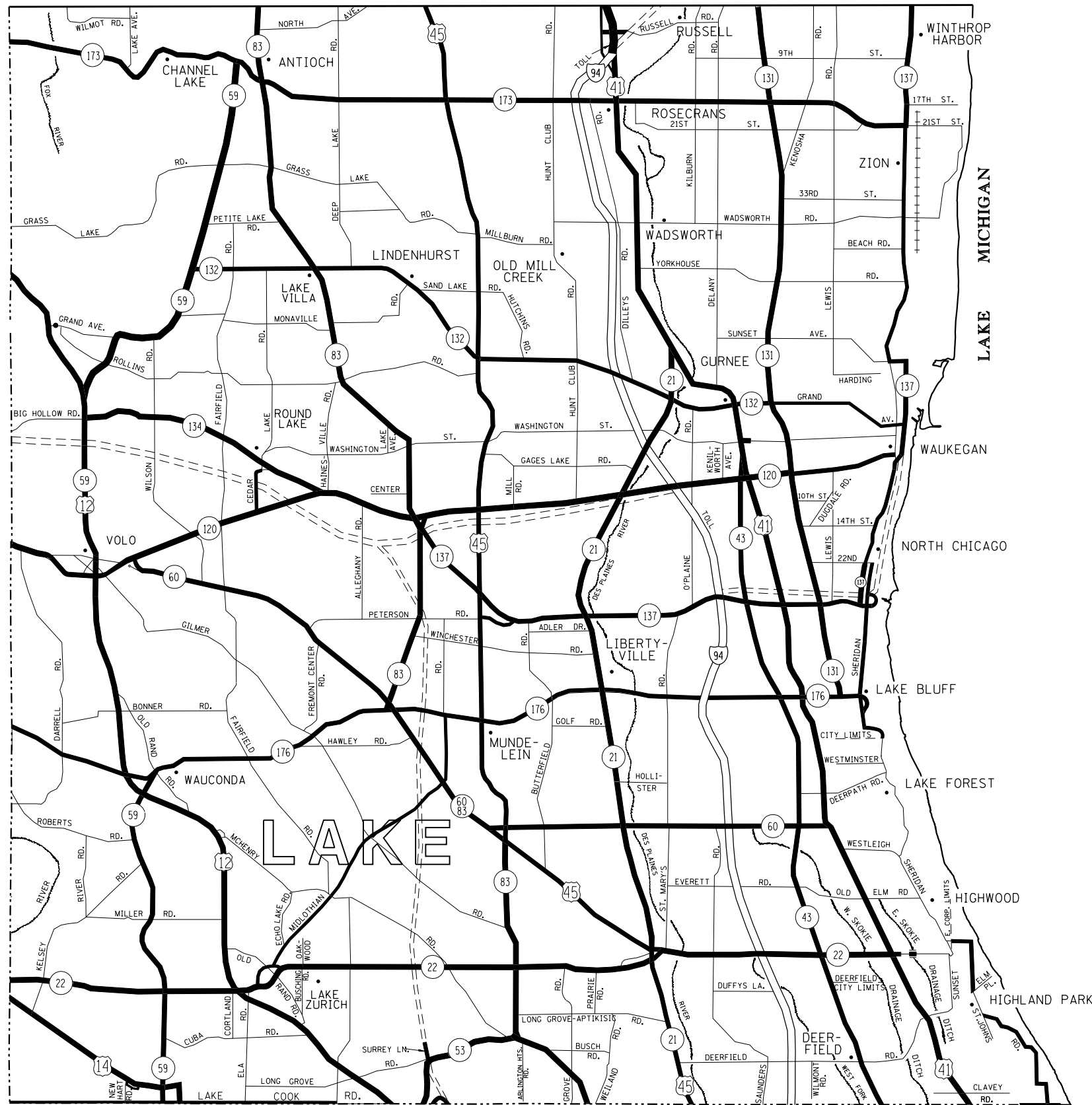
FILE NAME =	USER NAME = pyzzenowskirb	DESIGNED -	REVISED -
p:\1\084EBIDINTEG.illinois.gov\PIWIDOT\Documents\DOT Offices\District 1\Projects\138515\Design\138515-sht-plan.dgn		DRWN	REVISED -
Default	PLOT SCALE = 100.0000' / in.	CHECKED -	REVISED -
	PLOT DATE = 6/15/2016	DATE -	REVISED -

STATE OF ILLINOIS
DEPARTMENT OF TRANSPORTATION

FENCE REPAIR LOCATION MAP - KANE COUNTY
SOUTH OF IL RTE 38

SCALE: SHEET OF SHEETS STA. TO STA.

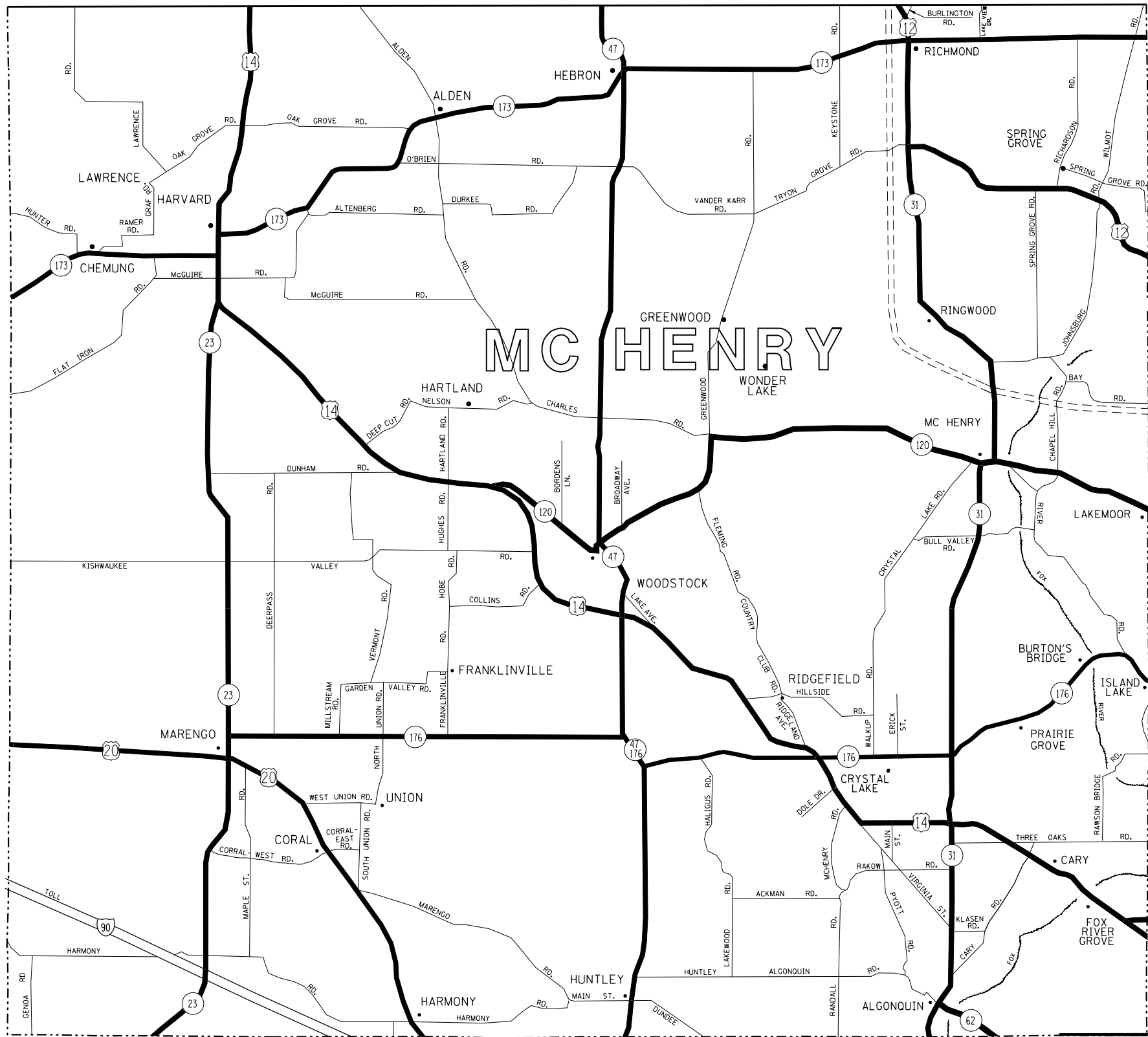
F.A. RTE.	SECTION	COUNTY	TOTAL SHEETS	SHEET NO.
VAR	2016-043I	VARIOUS	19	6
CONTRACT NO. 62D26			ILLINOIS FED. AID PROJECT	



DISTRICT NO. 1 MAINTENANCE DESIGNATIONS

- VARIOUS COLORS STATE HIGHWAYS & EXPRESSWAYS
- TOLLWAY
- CITY MAINTENANCE AGREEMENTS
- FUTURE HIGHWAYS
- VARIOUS AGENCIES HIGHWAYS

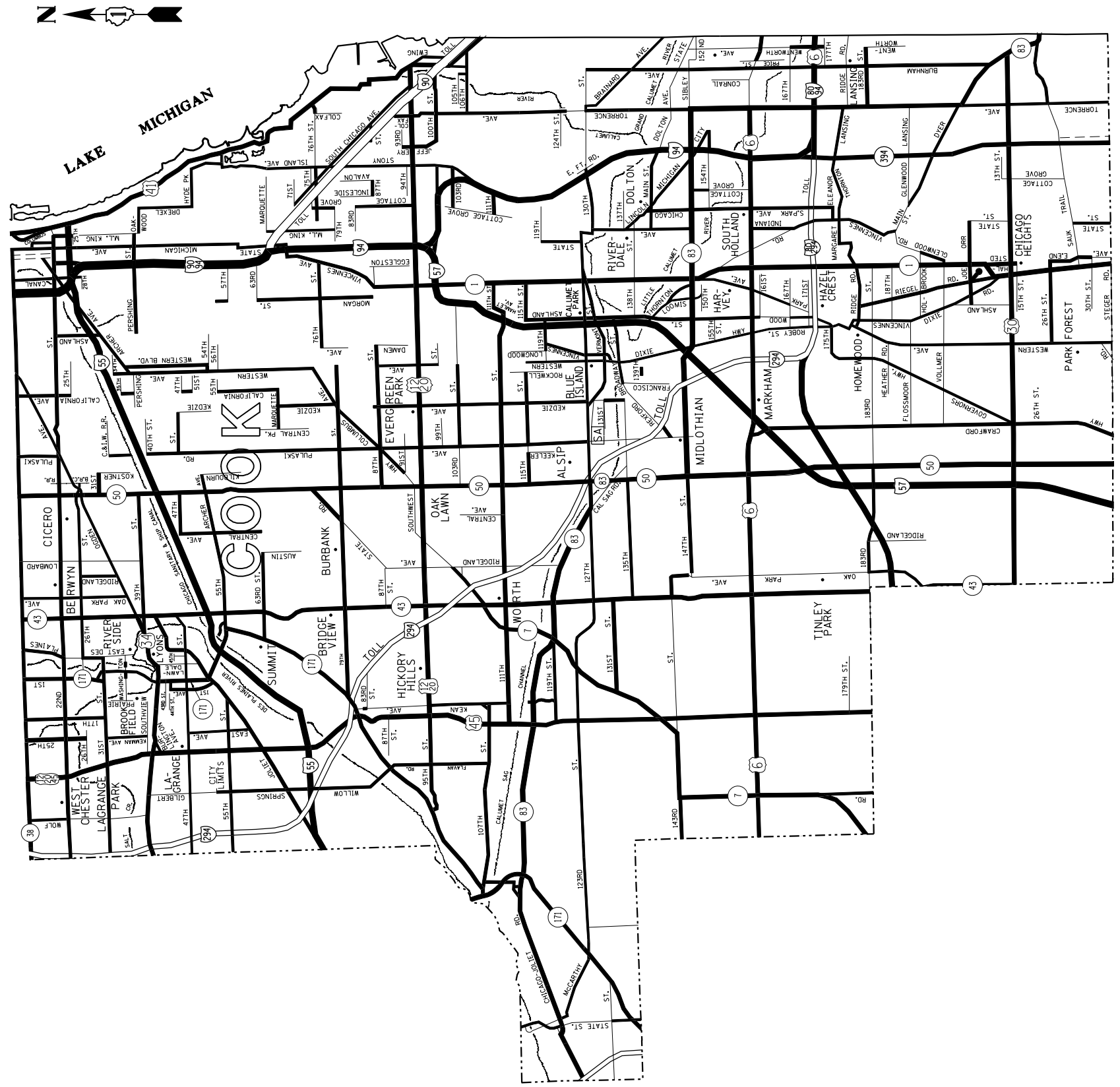
FILE NAME =	USER NAME = pyzanoskib	DESIGNED -	REVISED -	STATE OF ILLINOIS DEPARTMENT OF TRANSPORTATION	FENCE REPAIR LOCATION MAP - WILL COUNTY	F.A. RTE.	SECTION	COUNTY	TOTAL SHEETS	SHEET NO.
p:\11084EBID\INTEG\Illinois.gov\PIDOT\Documents\DOT Offices\District 1\Projects\1385\DRW\1385-1\Design\1385-1-sht-plan.dgn		CHECKED -	REVISED -			VAR	2016-0431	VARIOUS	19	7
Default		DATE -	REVISED -			CONTRACT NO. 62D26				
						ILLINOIS FED. AID PROJECT				
SCALE: SHEET OF SHEETS STA. TO STA.										



DISTRICT NO. 1 MAINTENANCE DESIGNATIONS

- VARIOUS COLORS STATE HIGHWAYS & EXPRESSWAYS
- TOLLWAY
- CITY MAINTENANCE AGREEMENTS
- FUTURE HIGHWAYS
- VARIOUS AGENCIES HIGHWAYS

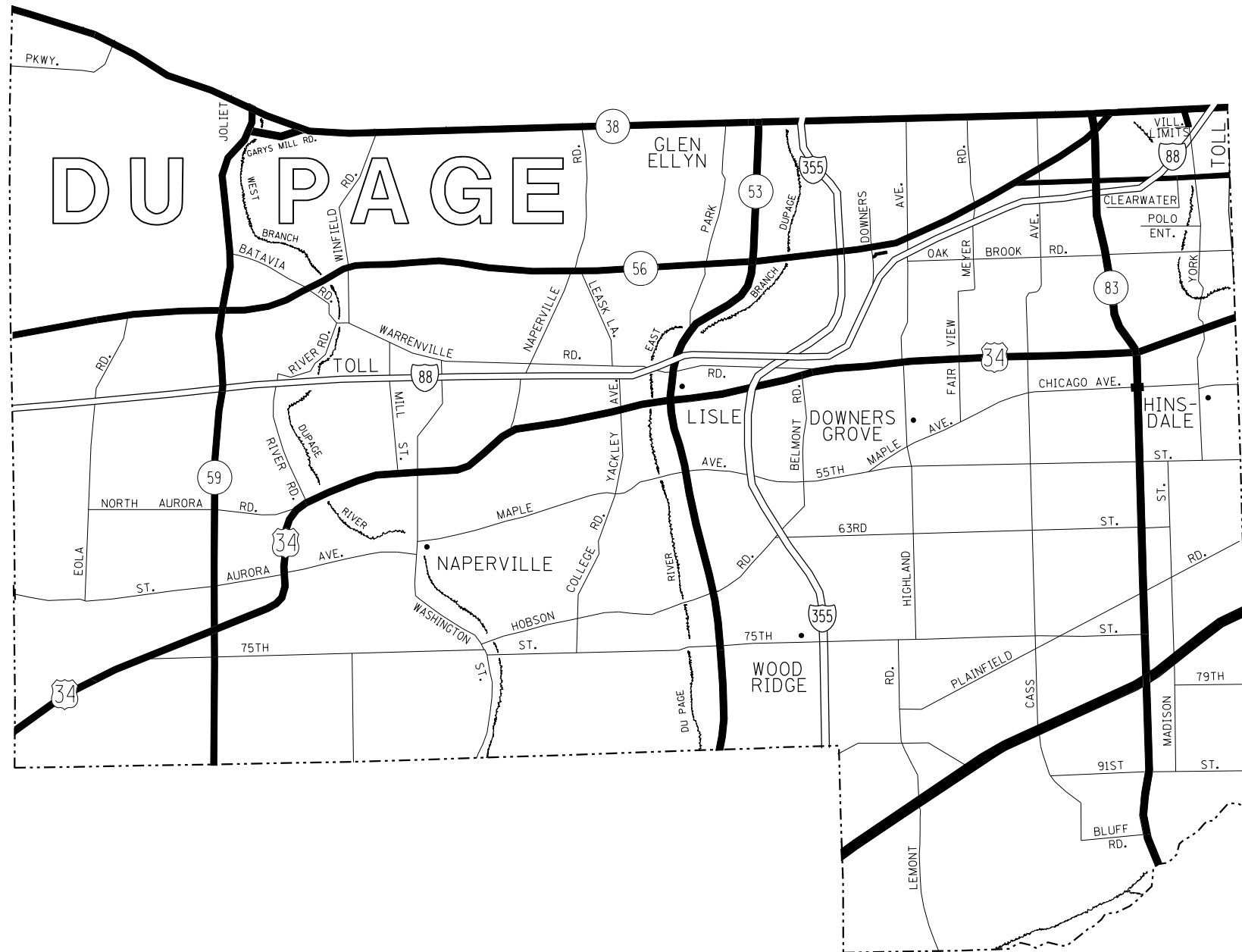
FILE NAME =	USER NAME = pyznowskirb	DESIGNED -	REVISED -	STATE OF ILLINOIS DEPARTMENT OF TRANSPORTATION	SCALE:	SHEET	OF	SHEETS	STA.	TO STA.	F.A. RTE.	SECTION	COUNTY	TOTAL SHEETS	SHEET NO.	
												CONTRACT NO. 62D26		ILLINOIS FED. AID PROJECT		



DISTRICT NO. 1
MAINTENANCE DESIGNATIONS

- VARIOUS COLORS STATE HIGHWAYS & EXPRESSWAYS
- TOLLWAY
- CITY MAINTENANCE AGREEMENTS
- FUTURE HIGHWAYS
- VARIOUS AGENCIES HIGHWAYS

FILE NAME =	USER NAME = pyzanosktrb	DESIGNED -	REVISED -	STATE OF ILLINOIS DEPARTMENT OF TRANSPORTATION	FENCE REPAIR LOCATION MAP - COOK COUNTY SOUTH OF IL RTE 38	F.A. RTE.	SECTION	COUNTY	TOTAL SHEETS	SHEET NO.	
p:\1\084EBID\INTEG\Illinois.gov\PWIDOT\Documents\DOT Offices\District 1\Projects\DI385\Drawings\Design\DI38515-sht-plan.dgn						VAR	2016-0431	VARIOUS	19	9	
Default	PLOT SCALE = 100.4545' / in.	CHECKED -	REVISED -			CONTRACT NO. 62D26					
	PLOT DATE = 6/15/2016	DATE -	REVISED -			ILLINOIS FED. AID PROJECT					



DISTRICT NO. 1
MAINTENANCE DESIGNATIONS

- VARIOUS COLORS STATE HIGHWAYS & EXPRESSWAYS
- TOLLWAY
- CITY MAINTENANCE AGREEMENTS
- FUTURE HIGHWAYS
- VARIOUS AGENCIES HIGHWAYS

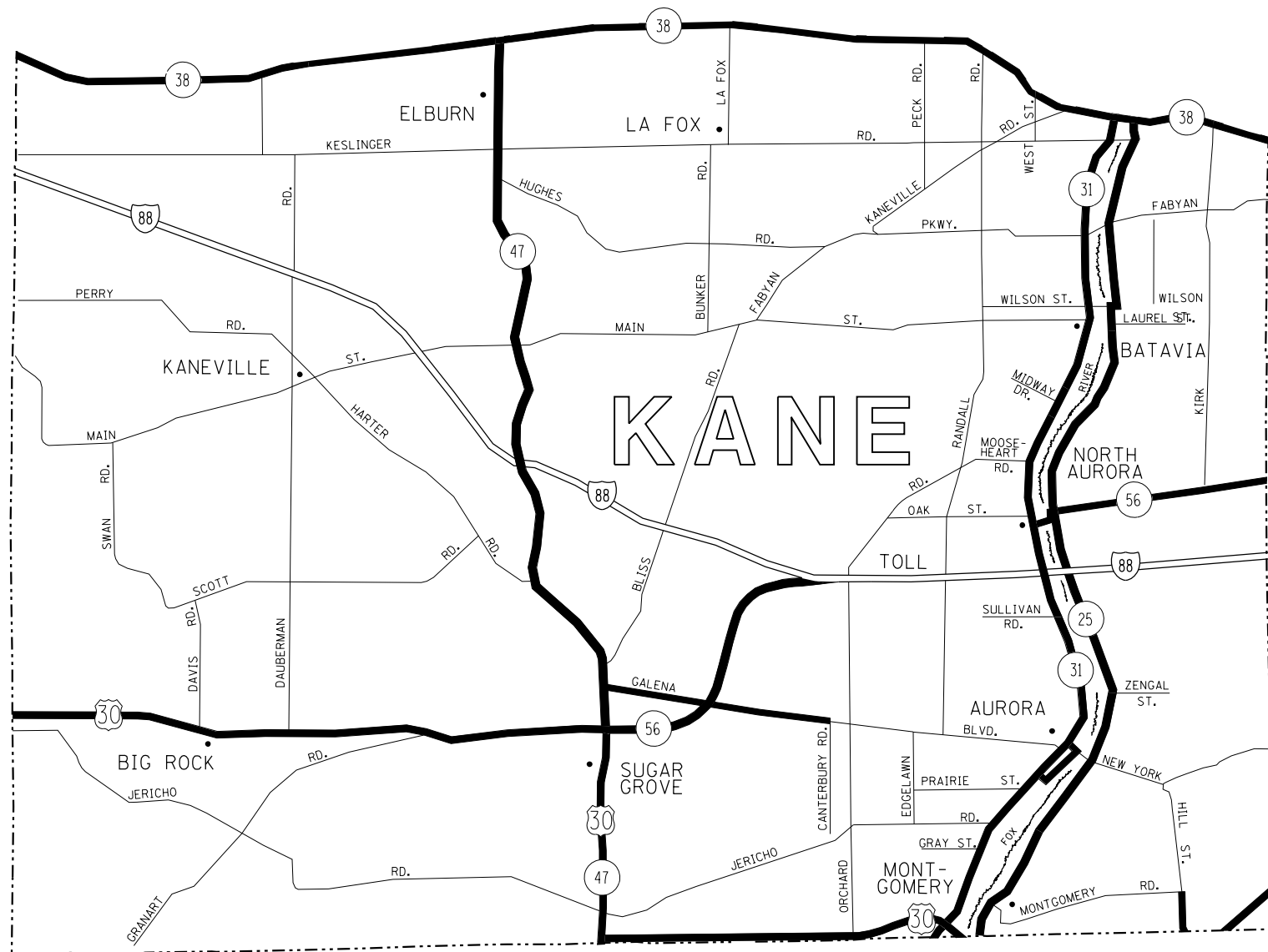
FILE NAME =	USER NAME = pyzanoski	DESIGNED -	REVISED -
p:\1084EBID\INTEG\Illinois.gov\PIDOT\Documents\DOT Offices\District 1\Projects\DI385\Drawings\Design\DI38515-sht-plan.dgn		CHECKED -	REVISED -
Default	PLOT SCALE = 100,4545' / in.	DATE -	REVISED -
	PLOT DATE = 6/15/2016		

**STATE OF ILLINOIS
DEPARTMENT OF TRANSPORTATION**

**FENCE REPAIR LOCATION MAP - DuPAGE COUNTY
SOUTH OF IL RTE 38**

SCALE: SHEET OF SHEETS STA. TO STA.

F.A. RTE.	SECTION	COUNTY	TOTAL SHEETS	SHEET NO.
VAR	2016-0431	VARIOUS	19	10
CONTRACT NO. 62D26				
ILLINOIS FED. AID PROJECT				



DISTRICT NO. 1
MAINTENANCE DESIGNATIONS

- VARIOUS COLORS STATE HIGHWAYS & EXPRESSWAYS
- TOLLWAY
- CITY MAINTENANCE AGREEMENTS
- FUTURE HIGHWAYS
- VARIOUS AGENCIES HIGHWAYS

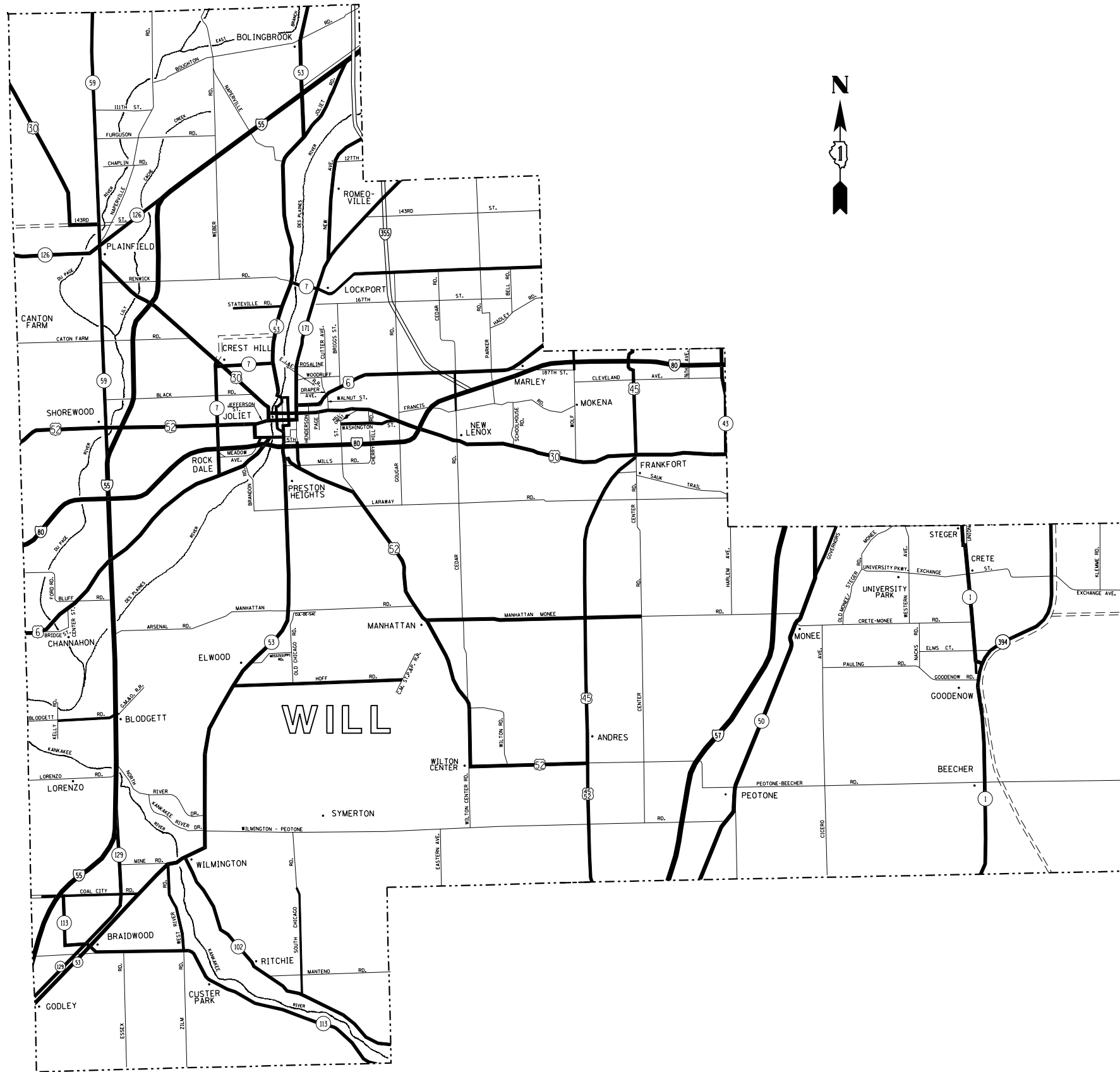
FILE NAME =	USER NAME = pyzanoskirb	DESIGNED -	REVISED -
p:\11084EBID\INTEG\Illinois.gov\PWIDOT\Documents\DOT Offices\District 1\Projects\DI38515-Design\DI38515-sht-plan.dgn		CHECKED -	REVISED -
Default	PLOT SCALE = 100.4545' / in.	DATE -	REVISED -
	PLOT DATE = 6/15/2016		

STATE OF ILLINOIS
DEPARTMENT OF TRANSPORTATION

FENCE REPAIR LOCATION MAP - KANE COUNTY
SOUTH OF IL RTE 38

SCALE: SHEET OF SHEETS STA. TO STA.

F.A. RTE.	SECTION	COUNTY	TOTAL SHEETS	SHEET NO.
VAR	2016-0431	VARIOUS	19	11
CONTRACT NO. 62D26			ILLINOIS FED. AID PROJECT	



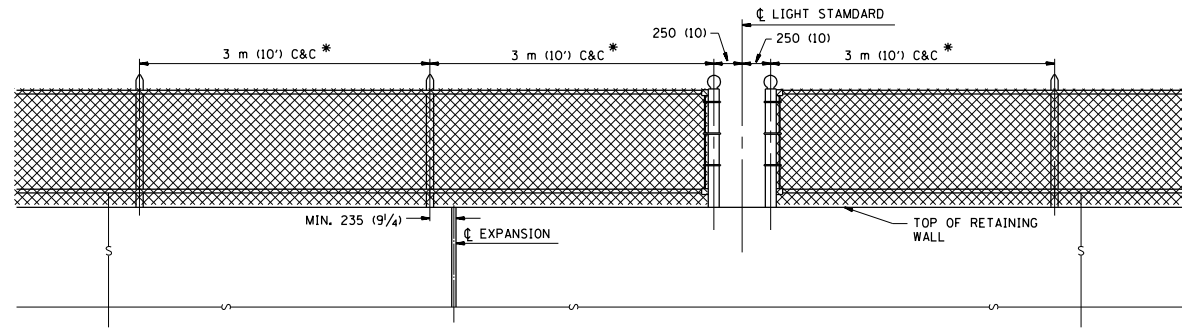
DISTRICT NO. 1 MAINTENANCE DESIGNATIONS

- VARIOUS COLORS STATE HIGHWAYS & EXPRESSWAYS
- TOLLWAY
- CITY MAINTENANCE AGREEMENTS
- FUTURE HIGHWAYS
- VARIOUS AGENCIES HIGHWAYS

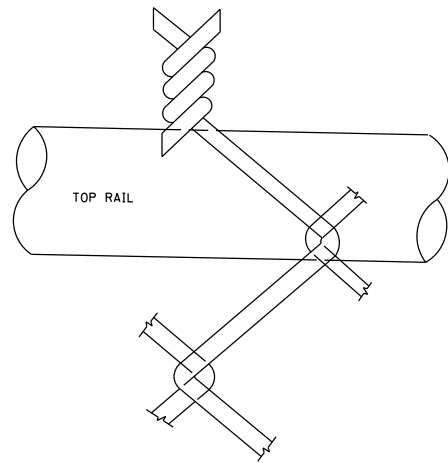
FILE NAME = p:\11084EBID\INTEG\Illinois.gov\PIDOT\Documents\DOT Offices\District 1\Projects\1385\Design\138515-sht-plan.dgn	USER NAME = pyzanoski.r DESIGNED - CHECKED - DATE -	REVISED - REVISED - REVISED - REVISED -	STATE OF ILLINOIS DEPARTMENT OF TRANSPORTATION	FENCE REPAIR LOCATION MAP - WILL COUNTY	<table border="1" style="width: 100%; border-collapse: collapse;"> <tr> <td style="width: 10%;">F.A. RTE.</td> <td style="width: 10%;">SECTION</td> <td style="width: 10%;">COUNTY</td> <td style="width: 10%;">TOTAL SHEETS</td> <td style="width: 10%;">SHEET NO.</td> </tr> <tr> <td>VAR</td> <td>2016-0431</td> <td>VARIOUS</td> <td>19</td> <td>12</td> </tr> <tr> <td colspan="5" style="text-align: center;">CONTRACT NO. 62D26</td> </tr> <tr> <td colspan="5" style="text-align: center;">ILLINOIS FED. AID PROJECT</td> </tr> </table>	F.A. RTE.	SECTION	COUNTY	TOTAL SHEETS	SHEET NO.	VAR	2016-0431	VARIOUS	19	12	CONTRACT NO. 62D26					ILLINOIS FED. AID PROJECT				
F.A. RTE.	SECTION	COUNTY	TOTAL SHEETS	SHEET NO.																					
VAR	2016-0431	VARIOUS	19	12																					
CONTRACT NO. 62D26																									
ILLINOIS FED. AID PROJECT																									
Default			SCALE: SHEET OF SHEETS STA. TO STA.																						

NOTE

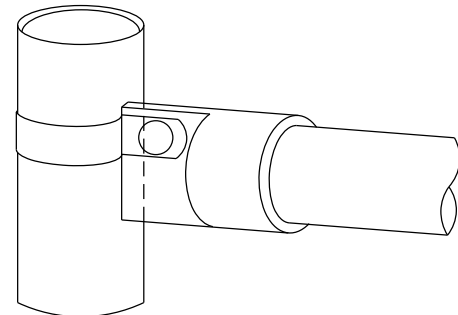
* MAXIMUM POST SPACING SHALL BE 3 m (10') C&C EXCEPT WHERE OTHERWISE SHOWN ON PLANS



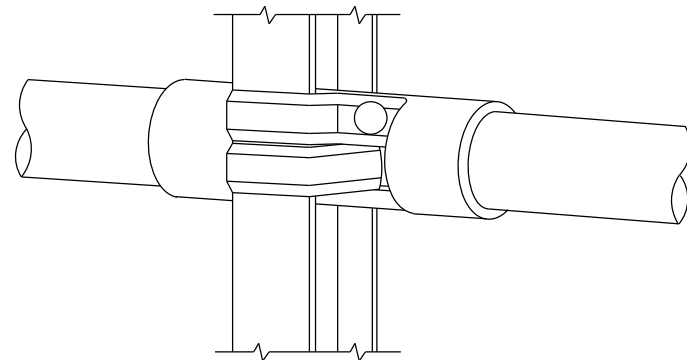
ELEVATION VIEW OF RETAINING WALL WITH PEDESTRIAN BARRIER TYPE III



WIRE MESH FABRIC TO BE BARBED AT THE TOP

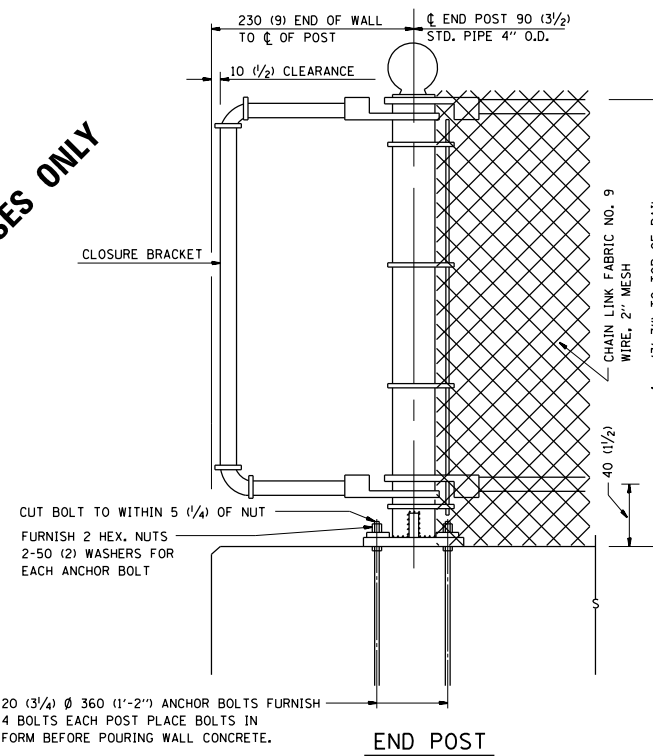


RAIL FITTING AT END POSTS



RAIL FITTING ON SECTION LINE POST

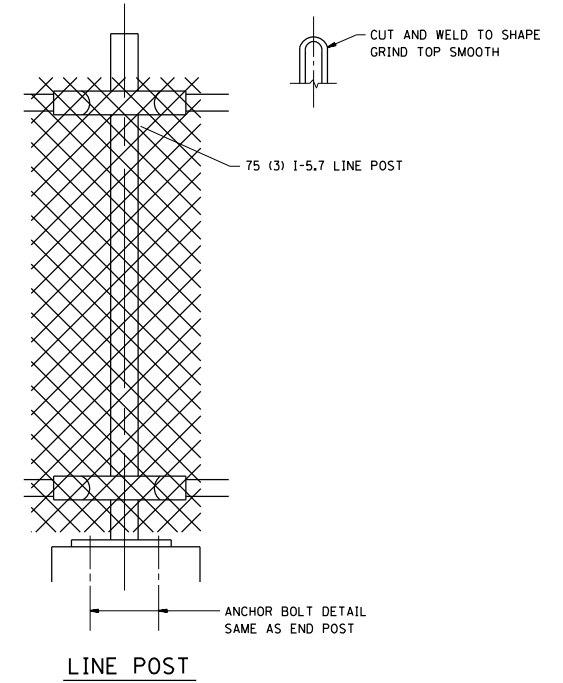
FOR INFORMATIONAL PURPOSES ONLY



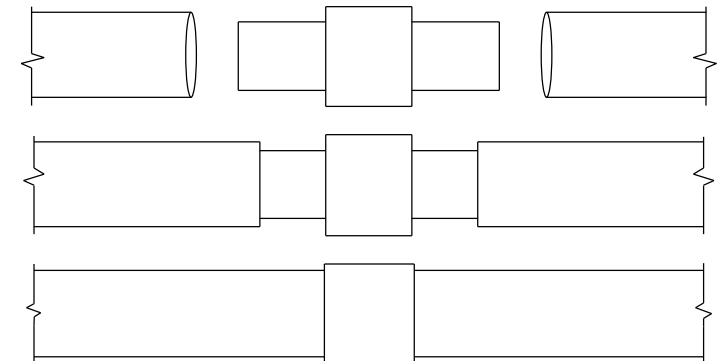
20 (3/4) Ø 360 (1'-2") ANCHOR BOLTS FURNISH 4 BOLTS EACH POST PLACE BOLTS IN FORM BEFORE POURING WALL CONCRETE.

END POST

NOTE:
THE COST OF FURNISHING ANCHOR BOLTS, NUTS, & WASHERS TO BE INCIDENTAL

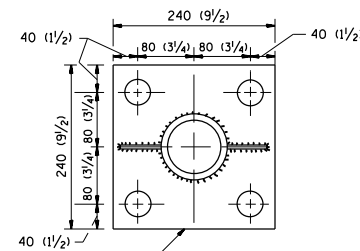


LINE POST



EXPANSION COUPLING DETAIL

NOTE:
EXP. COUPLING TO APPEAR IN TOP AND BOTTOM RAILS WHERE EVER EXP. JT. APPEARS IN STRUCTURE.



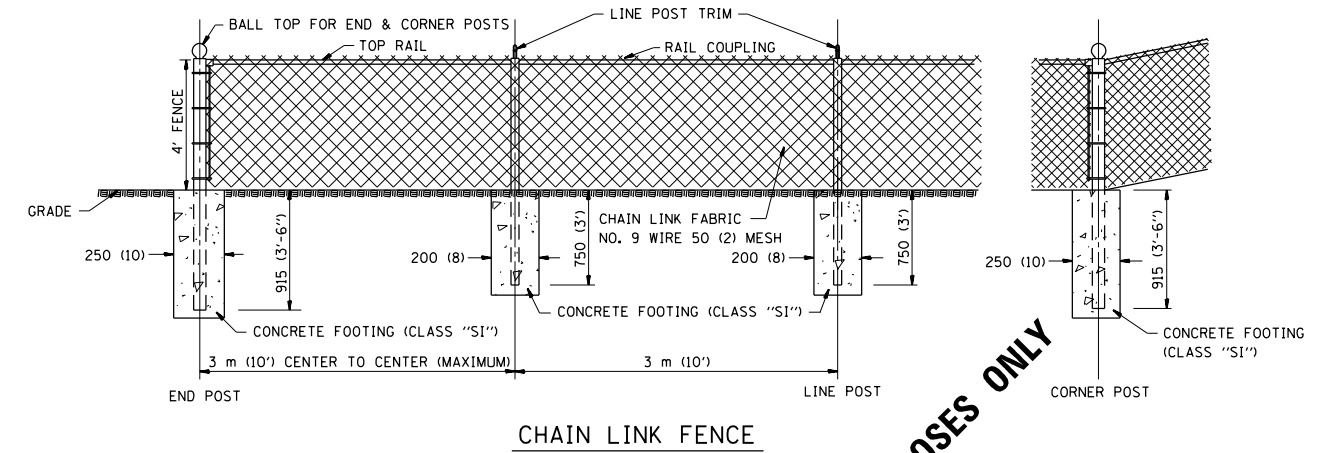
240 (9 1/2) X 80 (3 1/4) X 240 (9 1/2) BASE 4-30 (1 1/4) Ø HOLES FOR END Ø LINE POSTS

ANCHOR PLATE DETAILS

NOTE:
POST, PLATE AND GUSSET ASSEMBLY SHALL BE GALVANIZED AFTER ALL CUTTING, DRILLING, WELDING, AND FABRICATION HAVE BEEN COMPLETED. THE GALVANIZED COATING SHALL CONFORM TO THE REQUIREMENTS OF AASHTO M 120. THE GALVANIZED COATING SHALL NOT BE LESS THAN 610 G/50 M (2.0 OZ./50. FT.) OF SURFACE.

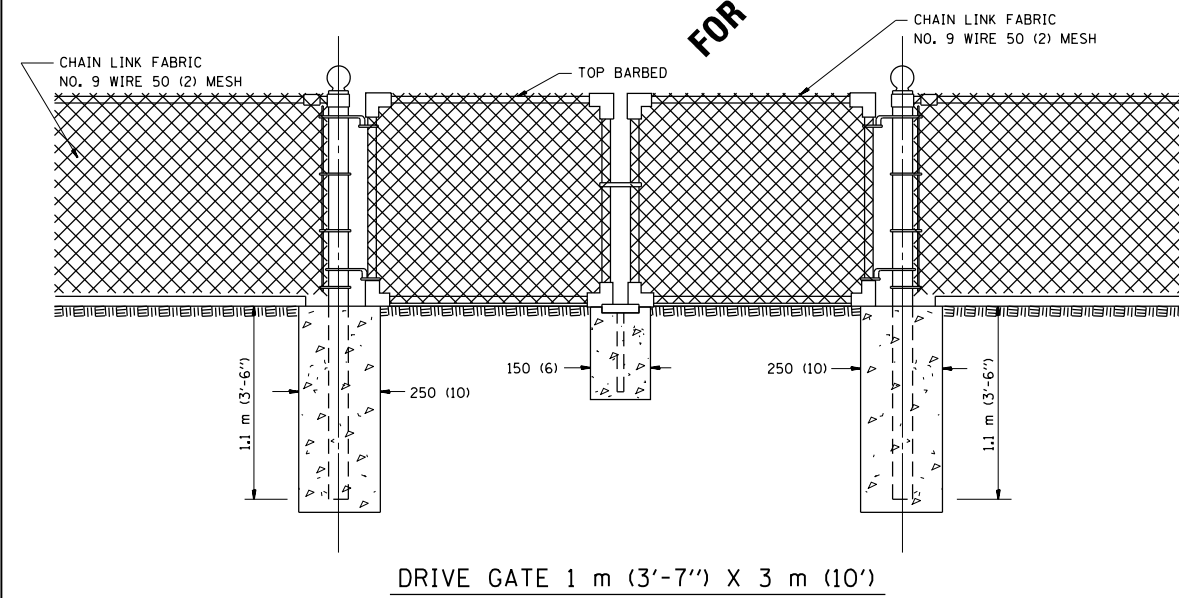
ALL DIMENSIONS ARE IN MILLIMETERS (INCHES) UNLESS OTHERWISE SHOWN.

FILE NAME = p:\1\084EBID\INTEG\illinois.gov\PIDOT\Documents\DOT Offices\District 1\Projects\DI385\DRW\10-SS-514-R.dgn	USER NAME = pyzanosktrb	DESIGNED -	REVISED -	STATE OF ILLINOIS DEPARTMENT OF TRANSPORTATION	PEDESTRIAN BARRIER TYPE III STD. 10-SS-514 R				F.A. RTE.	SECTION	COUNTY	TOTAL SHEETS	SHEET NO.
PLOT SCALE = 100,4545' / in.	CHECKED -	REVISED -	REVISED -						VAR	2016-0431	VARIOUS	19	13
PLOT DATE = 6/15/2016	DATE -	REVISED -	REVISED -		SCALE: SHEET NO. OF SHEETS STA. TO STA.				CONTRACT NO. 62D26				
									FED. ROAD DIST. NO. ILLINOIS FED. AID PROJECT				

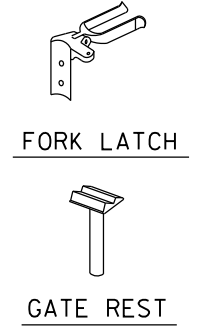


CHAIN LINK FENCE

FOR INFORMATIONAL PURPOSES ONLY



DRIVE GATE 1 m (3'-7") X 3 m (10')



ALL DIMENSIONS ARE IN MILLIMETERS (INCHES) UNLESS OTHERWISE SHOWN.

NOTE:

THE CHAIN LINK FENCE AS SHOWN HEREIN SHALL BE CONSTRUCTED AT SUCH LOCATIONS AS SHOWN ON PLANS AND IN ACCORDANCE WITH THE SPECIAL PROVISIONS

THE ENGINEER SHALL ESTABLISH ALL NECESSARY LINE AND GRADE PRIOR TO THE ERECTION OF THE FENCE IN CONFORMANCE WITH THE PLANS

FILE NAME =	USER NAME = pyzanoskirb	DESIGNED -	REVISED -
p:\1\084EBID\INTEG\Illinois.gov\PIDOT\Documents\IDOT Offices\District 1\Projects\DI38515\Design\DI38515-sht-plan.dgn		CHECKED -	REVISED -
		DATE -	REVISED -

STATE OF ILLINOIS
DEPARTMENT OF TRANSPORTATION

CHAIN LINK FENCE
STD. 10-SS-506 B

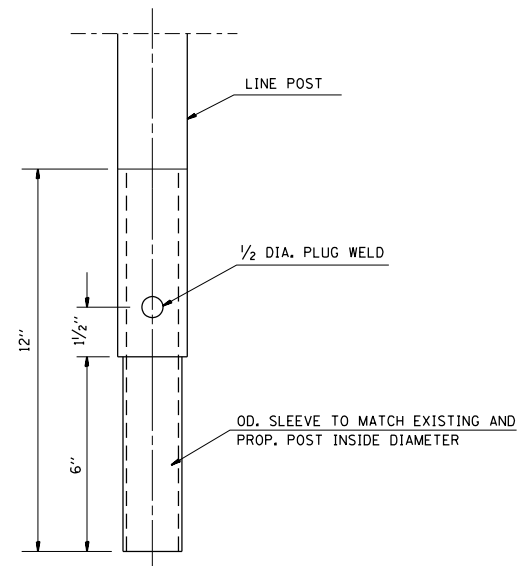
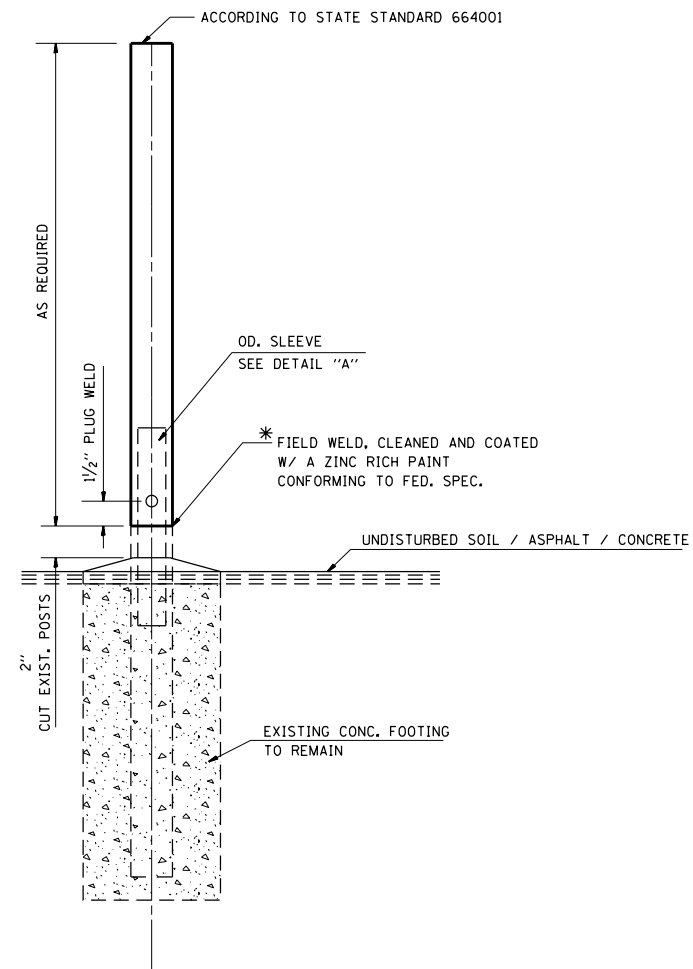
SCALE: SHEET NO. OF SHEETS STA. TO STA.

F.A. RTE.	SECTION	COUNTY	TOTAL SHEETS	SHEET NO.
VAR	2016-043I	VARIOUS	19	14
CONTRACT NO. 62D26				
FED. ROAD DIST. NO. ILLINOIS FED. AID PROJECT				

GENERAL NOTES:

THIS WORK CONSISTS OF FURNISHING ALL LABOR, MATERIALS, TOOLS AND EQUIPMENT TO REPAIR CHAIN LINK FENCE POST SLEEVE AS SHOWN ON THE PLANS OR AS DIRECTED BY THE ENGINEER, AND IN ACCORDANCE WITH STATE STANDARD 664001.

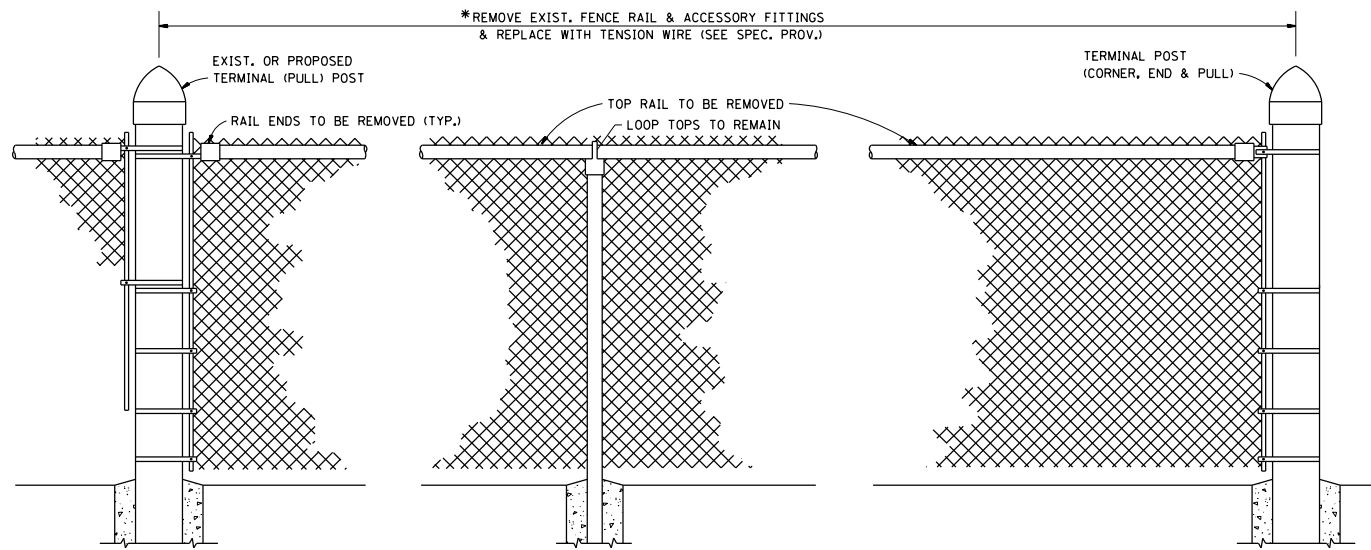
BASIS OF PAVEMENT: THIS WORK SHALL BE PAID FOR AT THE CONTRACT UNIT PRICE EACH FOR "CHAIN LINK FENCE POST SLEEVE REPAIR" WHICH PRICE SHALL BE PAYMENT IN FULL TO COMPLETE THE WORK AS SPECIFIED HEREIN.



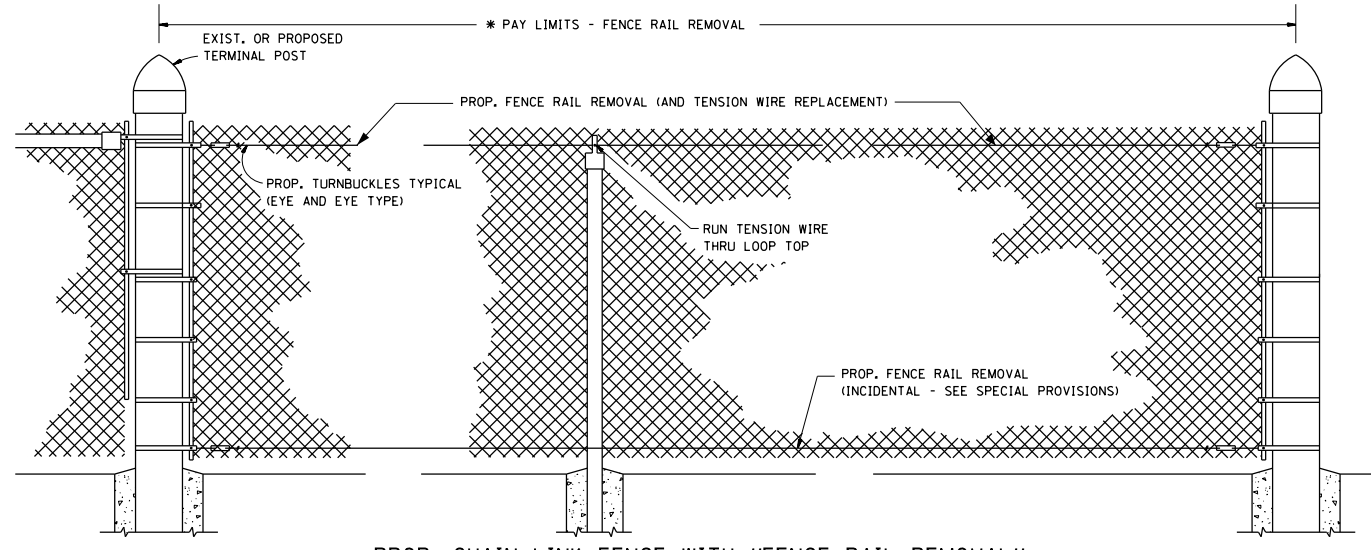
SLEEVE DET. DWG
DETAIL "A"
SLEEVE DETAIL

* THIS WORK SHALL BE INCLUDED IN THE COST OF THE PAY ITEM "CHAIN LINK FENCE POST SLEEVE REPAIR"

FILE NAME =	USER NAME = pyzanoskirb	DESIGNED -	REVISED -	STATE OF ILLINOIS DEPARTMENT OF TRANSPORTATION	CHAIN LINK FENCE POST SLEEVE REPAIR DETAIL	F.A. RTE.	SECTION	COUNTY	TOTAL SHEETS	SHEET NO.
p:\1\084EBID\INTEG\Illinois.gov\PIDOT\Documents\DOT Offices\District 1\Projects\DI385\DRW\Design\DI38515-sht-plan.dgn	DRW	CHECKED -	REVISED -			VAR	2016-0431	VARIOUS	19	15
PLOT SCALE = 100,4545' / in.	DATE -	REVISED -	REVISED -			CONTRACT NO. 62D26				
PLOT DATE = 6/15/2016	DATE -	REVISED -	REVISED -			SCALE:	SHEET NO.	OF SHEETS	STA.	TO STA.



EXIST. CHAIN LINK FENCE WITH TOP RAIL



PROP. CHAIN LINK FENCE WITH "FENCE RAIL REMOVAL"

* THE ENGINEER IN CHARGE SHALL DETERMINE THE LENGTH OF FENCE RAIL TO BE REMOVED & REPLACED WITH "TENSION WIRE"

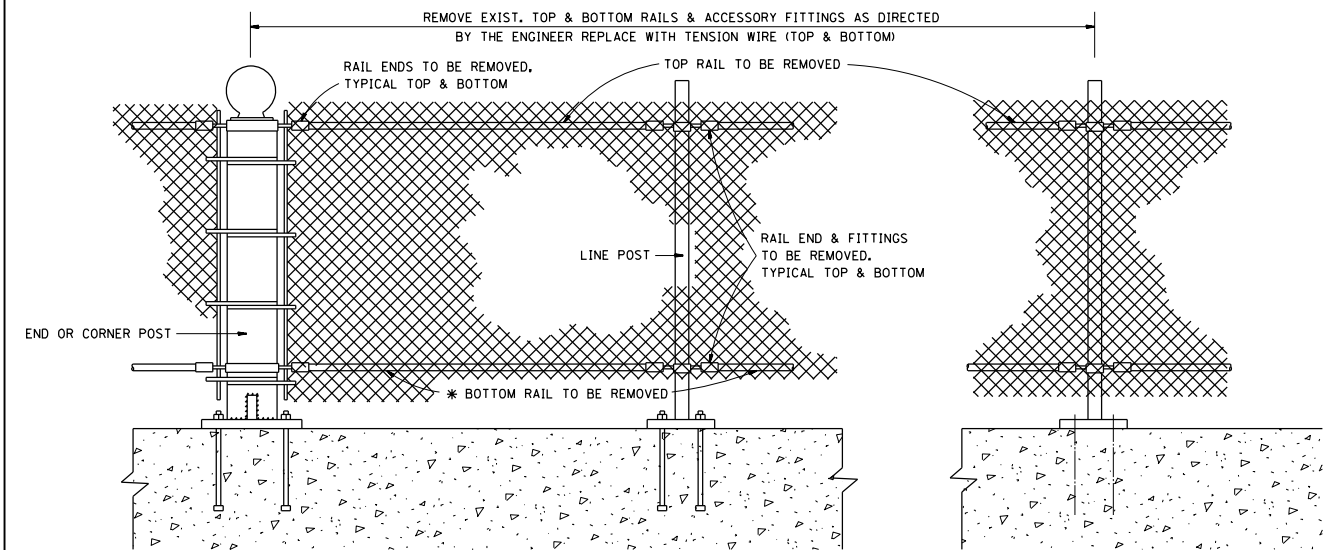
GENERAL NOTES

FENCE RAIL REMOVAL: THIS ITEM CONSISTS OF REMOVING EXISTING TOP OR BOTTOM RAIL, (DAMAGED OR UNDAMAGED) AND REPLACING WITH TENSION WIRE. BOTTOM TENSION WIRE SHALL BE CONSIDERED INCIDENTAL EXCEPT AT LOCATIONS OF EXISTING BOTTOM RAIL REMOVAL.

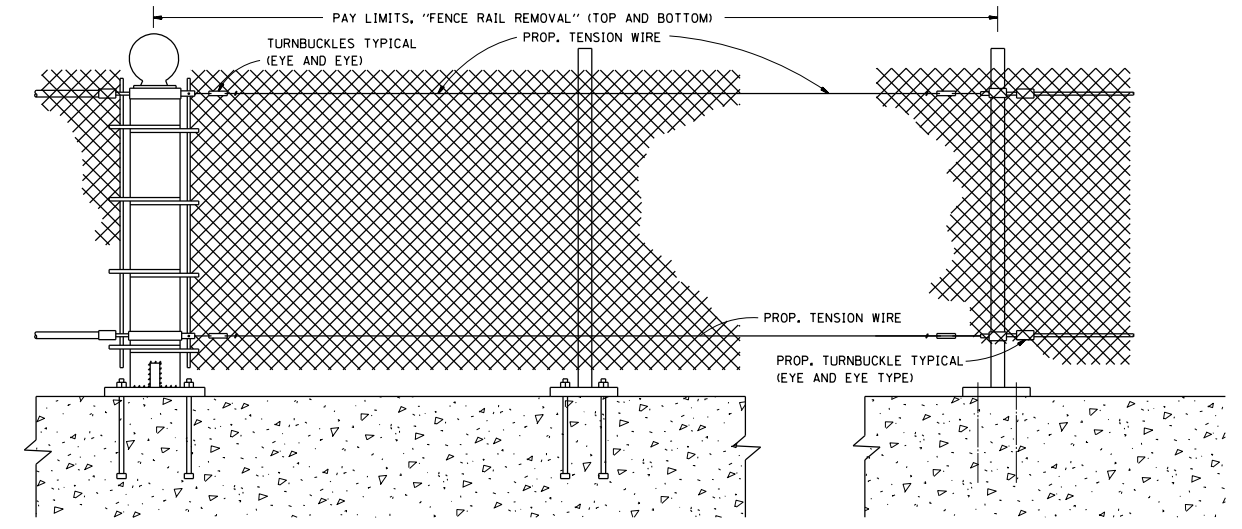
TENSION WIRE: THIS ITEM CONSISTS OF INSTALLING TENSION WIRE, TOP OR BOTTOM, WHERE TOP OR BOTTOM RAIL IS NON-EXISTENT, OR WHERE EXISTING DAMAGED TENSION WIRE IS REMOVED AND REPLACED BY NEW TENSION WIRE.

ALL WORK AND MATERIALS SHALL BE IN ACCORDANCE WITH THE PLANS, SPECIAL PROVISIONS, STANDARD SPECIFICATIONS AND STANDARD 664001.

REPLACEMENT OF OTHER FENCE COMPONENT PARTS SHALL BE MEASURED AND PAID FOR SEPARATELY AS DESCRIBED IN THE SPECIAL PROVISIONS.



EXIST. PEDESTRIAN BARRIER TYPE 3 WITH TOP AND BOTTOM RAILS



PROP. PEDESTRIAN BARRIER TYPE 3 WITH FENCE RAIL REMOVAL

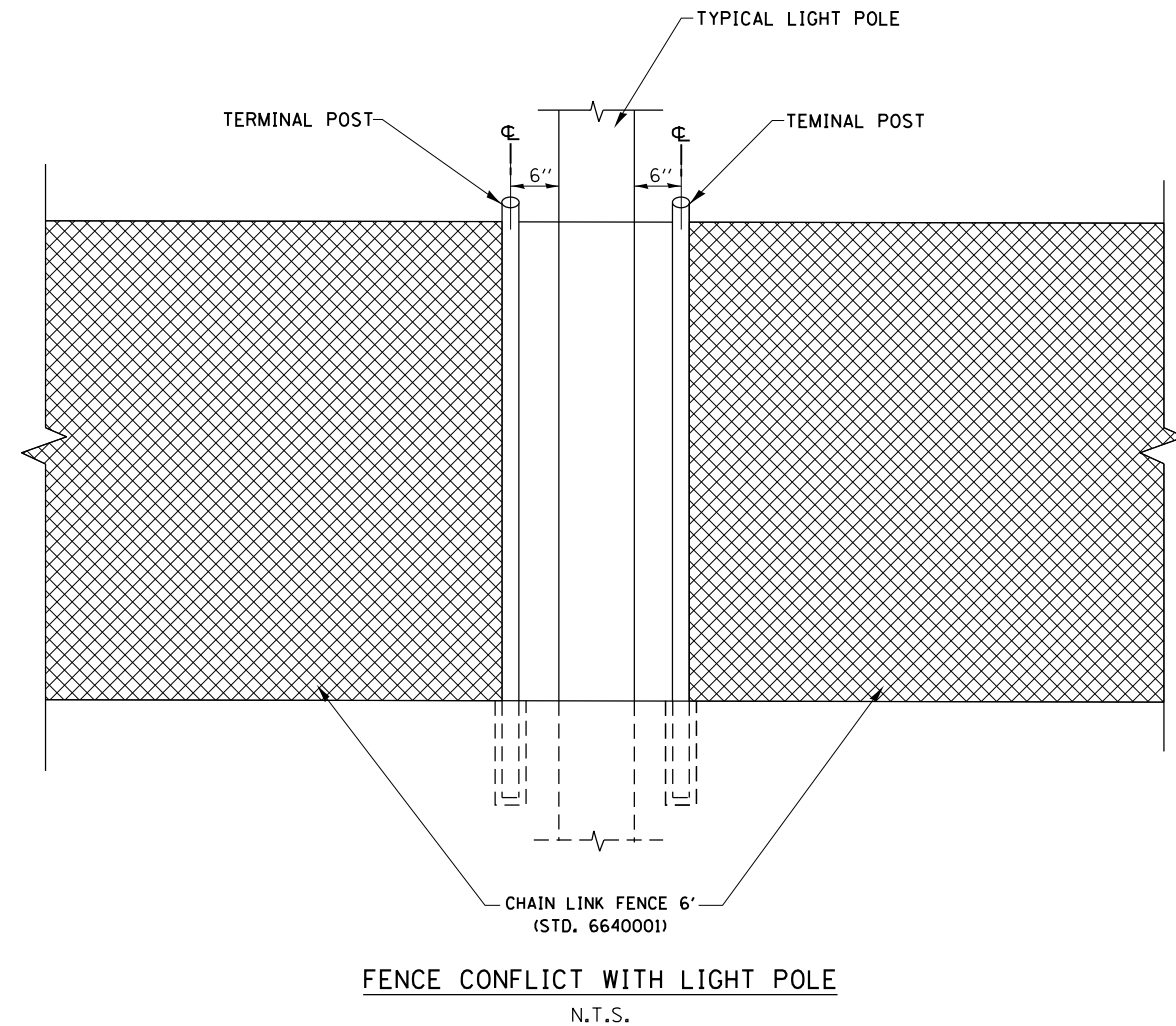
ALL DIMENSIONS ARE IN MILLIMETERS (INCHES) UNLESS OTHERWISE SHOWN.

FILE NAME =	USER NAME = pyzanosktrb	DESIGNED -	REVISED -
p:\1\084EBID\INTEG\illinois.gov\PIDOT\Documents\DOT Offices\District 1\Projects\DI385\DRW\Design\DI38515-sht-plan.dgn		CHECKED -	REVISED -
		DATE -	REVISED -

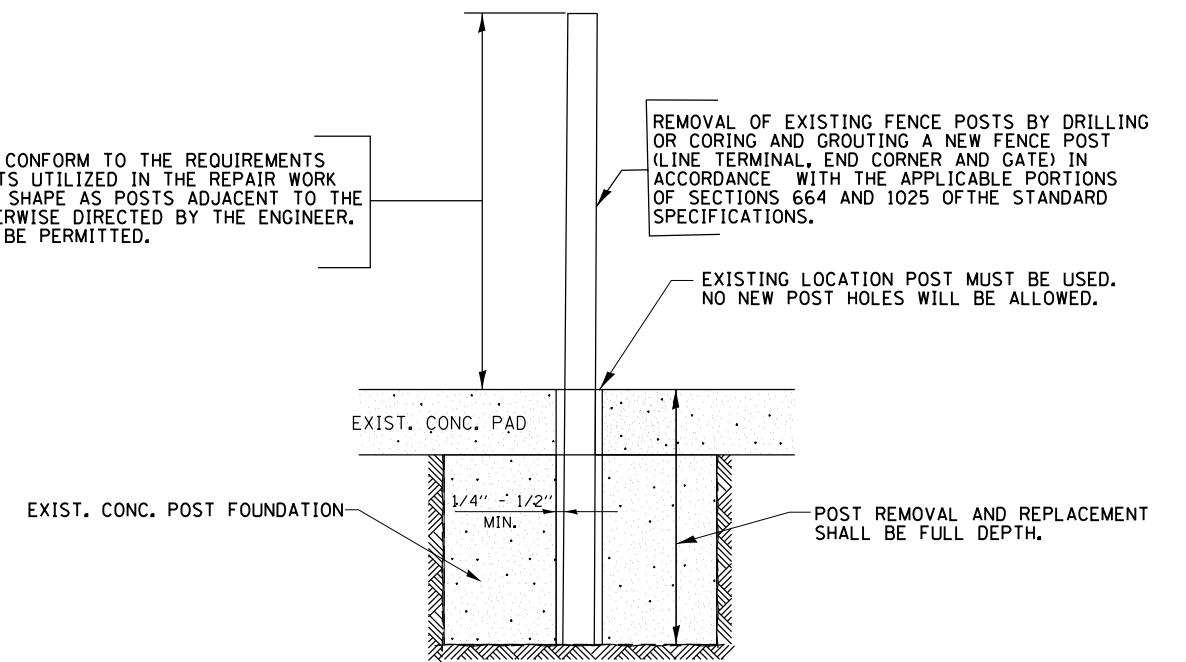
**STATE OF ILLINOIS
DEPARTMENT OF TRANSPORTATION**

PROPOSED PEDESTRIAN BARRIER AND CHAIN LINK FENCE WITH TENSION WIRE AND FENCE RAIL REMOVAL				
SCALE:	SHEET NO.	OF SHEETS	STA.	TO STA.

F.A. RTE.	SECTION	COUNTY	TOTAL SHEETS	SHEET NO.
VAR	2016-0431	VARIOUS	19	16
CONTRACT NO. 62D26				
FED. ROAD DIST. NO. ILLINOIS FED. AID PROJECT				



GALVANIZED POSTS SHALL CONFORM TO THE REQUIREMENTS OF STANDARD 864001 POSTS UTILIZED IN THE REPAIR WORK SHALL BE THE SAME TYPE SHAPE AS POSTS ADJACENT TO THE REPAIR AREA UNLESS OTHERWISE DIRECTED BY THE ENGINEER. NO USED MATERIALS WILL BE PERMITTED.



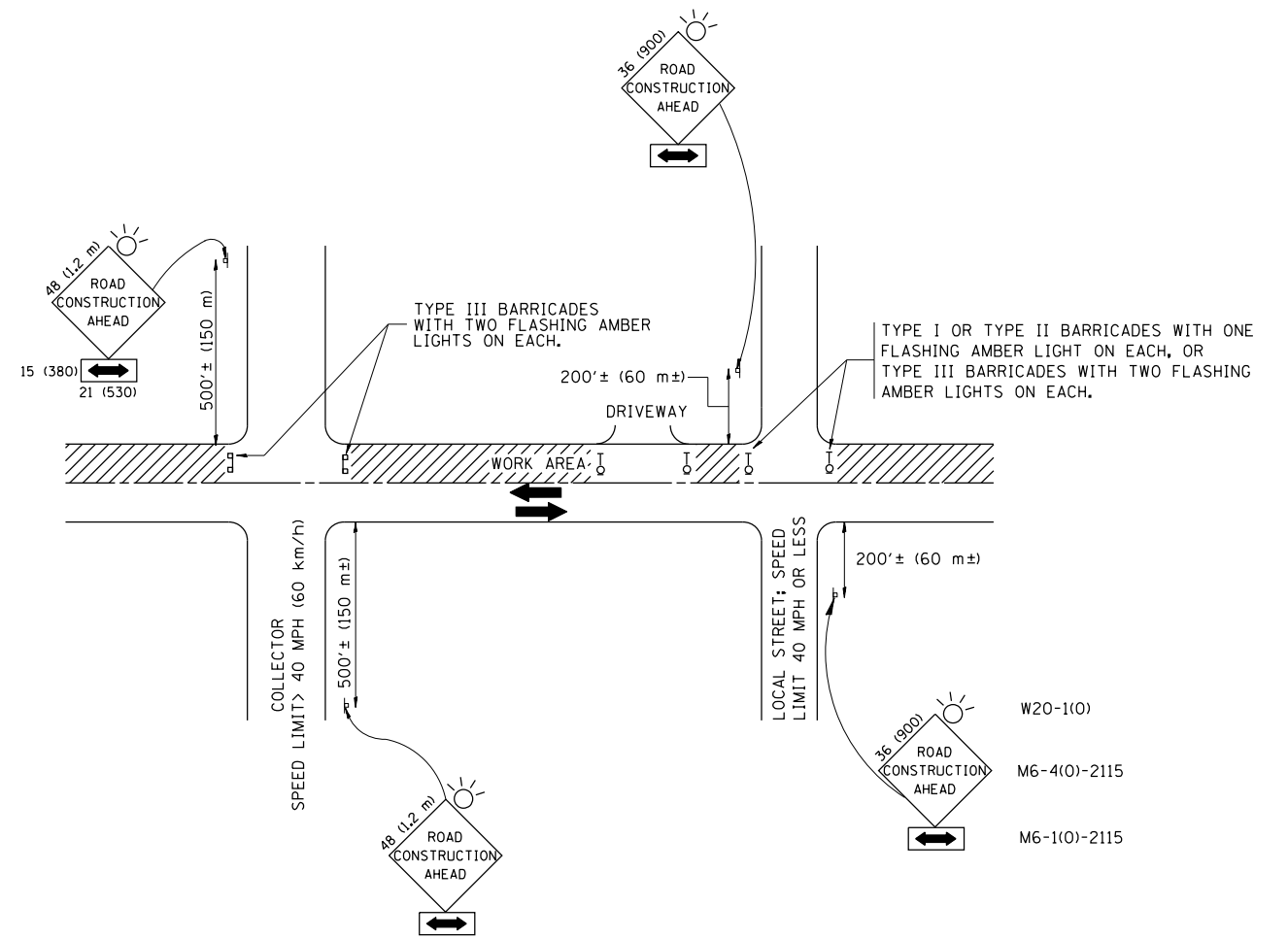
FILE NAME =	USER NAME = pyzanoskirb	DESIGNED -	REVISED -
p:\1\084EBID\INTEG\Illinois.gov\PIDOT\Documents\DOT Offices\District 1\Projects\DI385\Drawings\Design\DI38515-sht-plan.dgn		CHECKED -	REVISED -
Default	PLOT SCALE = 100.4545' / in.	DATE -	REVISED -
	PLOT DATE = 6/15/2016		

**STATE OF ILLINOIS
DEPARTMENT OF TRANSPORTATION**

SPECIAL FENCE DETAILS

SCALE: SHEET OF SHEETS STA. TO STA.

F.A. RTE.	SECTION	COUNTY	TOTAL SHEETS	SHEET NO.
VAR	2016-0431	VARIOUS	19	17
CONTRACT NO. 62D26				
ILLINOIS FED. AID PROJECT				



TRAFFIC CONTROL AND PROTECTION FOR SIDE ROADS, INTERSECTIONS, AND DRIVEWAYS

NOTES:

- A. FOR NO LANE RESTRICTION ON THE SIDE ROAD OR DRIVEWAYS
 1. SIDE ROAD WITH A SPEED LIMIT OF 40 MPH (60 km/h) OR LESS AS SHOWN ON THE DRAWING AND AS DIRECTED BY THE ENGINEER:
 - a) ONE ROAD CONSTRUCTION AHEAD SIGN 36 x 36 (900x900) WITH A FLASHER AND FLAG MOUNTED ON IT APPROXIMATELY 200' (60 m) IN ADVANCE OF THE MAIN ROUTE.
 - b) THE CLOSED PORTION OF THE MAIN ROUTE SHALL BE PROTECTED BY BLOCKING WITH TYPE I, TYPE II OR TYPE III BARRICADES, 1/3 OF THE CROSS SECTION OF THE CLOSED PORTION.
 2. SIDE ROAD WITH A SPEED LIMIT GREATER THAN 40 MPH (60 km/h) AS SHOWN ON THE DRAWING AND AS DIRECTED BY THE ENGINEER:
 - a) ONE ROAD CONSTRUCTION AHEAD SIGN 48 x 48 (1.2 m x 1.2 m) WITH A FLASHER MOUNTED ON IT APPROXIMATELY 500' (150 m) IN ADVANCE OF THE MAIN ROUTE.
 - b) THE CLOSED PORTION OF THE MAIN ROUTE SHALL BE PROTECTED BY BLOCKING WITH TYPE III BARRICADES, 1/2 OF THE CROSS SECTION OF THE CLOSED PORTION.
 3. WHEN THE SIDE ROAD LIES BETWEEN THE BEGINNING OF THE MAINLINE SIGNING AND THE WORK ZONE, A SINGLE HEADED ARROW (M6-1) SHALL BE USED IN LIEU OF THE DOUBLE HEADED ARROW (M6-4).
- B. FOR A LANE CLOSURE ON A SIDE ROAD OR DRIVEWAY:

USE APPLICABLE PORTIONS OF THE TYPICAL APPLICATION OF TRAFFIC CONTROL DEVICES (STD. 701501, STD. 701606 OR THE APPROPRIATE STANDARD). THE SPACING OF SIGNS AND BARRICADES SHALL BE ADJUSTED FOR FIELD CONDITIONS AS DIRECTED BY THE ENGINEER. THE DIRECTIONAL ARROW SHALL BE COVERED OR REMOVED WHEN NO LONGER CONSISTENT WITH THE SIDE ROAD LANE CLOSURE.
- C. ADVANCE WARNING SIGNS ARE TO BE OMITTED ON DRIVEWAY UNLESS OTHERWISE NOTED.
- D. THE TRAFFIC CONTROL AND PROTECTION FOR SIDE ROADS, INTERSECTIONS, AND DRIVEWAYS SHALL BE INCIDENTAL TO THE COST OF SPECIFIED TRAFFIC CONTROL STANDARDS OR ITEMS.

All dimensions are in millimeters (inches) unless otherwise shown.

FILE NAME =	USER NAME = pyzanoski	DESIGNED - LHA	REVISED - J. OBERLE 10-18-95
p:\il\084EBID\INTEG\illinois.gov\PIDOT\Documents\DOT Offices\District 1\Projects\DI385\Design\DI38515-sht-plan.dgn		CHECKED -	REVISED - A. HOUSEH 03-06-96
		DATE - 06-89	REVISED - A. HOUSEH 10-15-96
			REVISED - T. RAMMACHER 01-06-00

STATE OF ILLINOIS
DEPARTMENT OF TRANSPORTATION

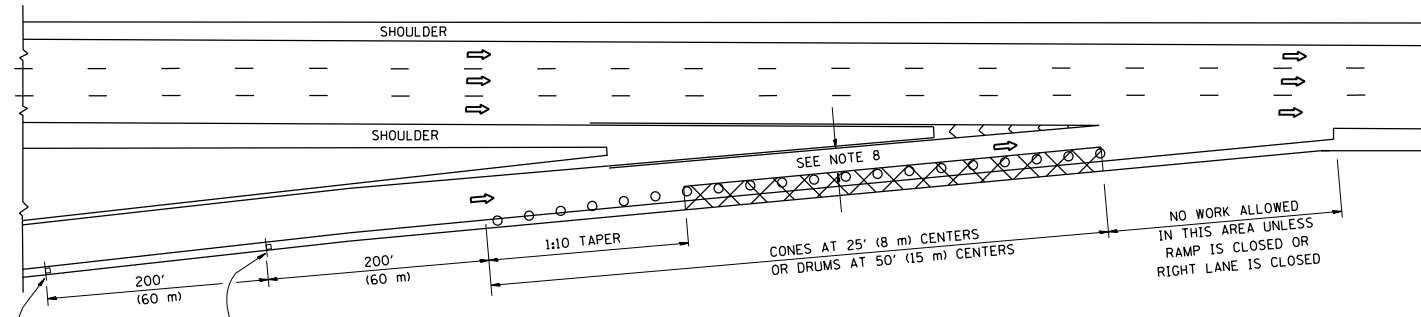
TRAFFIC CONTROL AND PROTECTION FOR
SIDE ROADS, INTERSECTIONS, AND DRIVEWAYS

SCALE: NONE SHEET NO. 1 OF 1 SHEETS STA. TO STA.

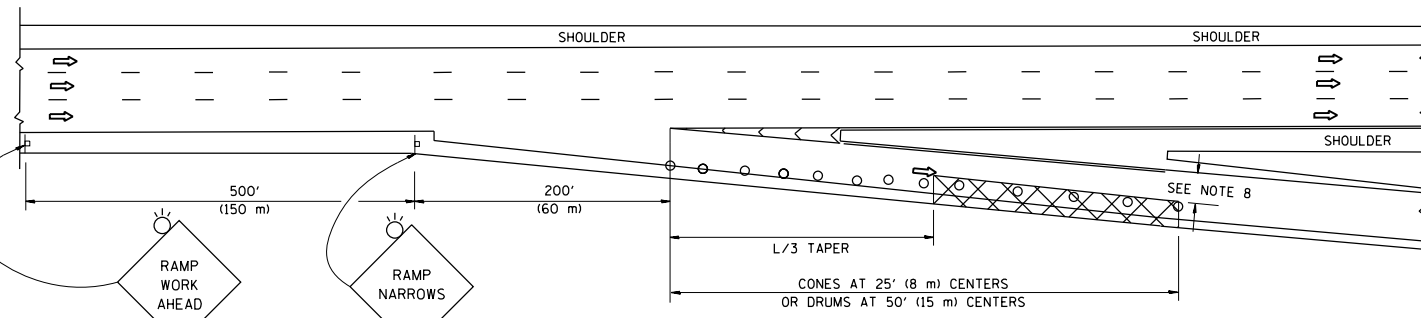
F.A. RTE.	SECTION	COUNTY	TOTAL SHEETS	SHEET NO.
VAR	2016-0431	VARIOUS	19	18
TC-10			CONTRACT NO. 62D26	
FED. ROAD DIST. NO. 1 ILLINOIS FED. AID PROJECT				

PARTIAL RAMP CLOSURE DETAILS

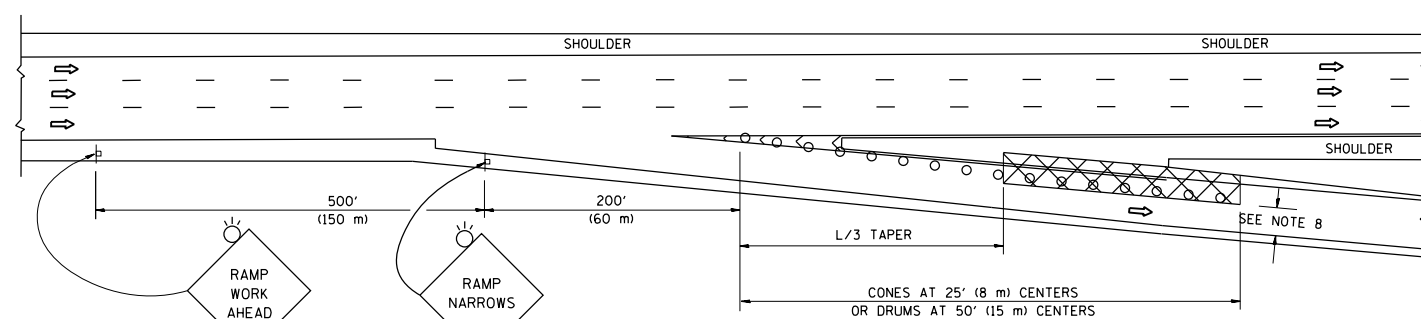
SHOULDER CLOSURE DETAILS



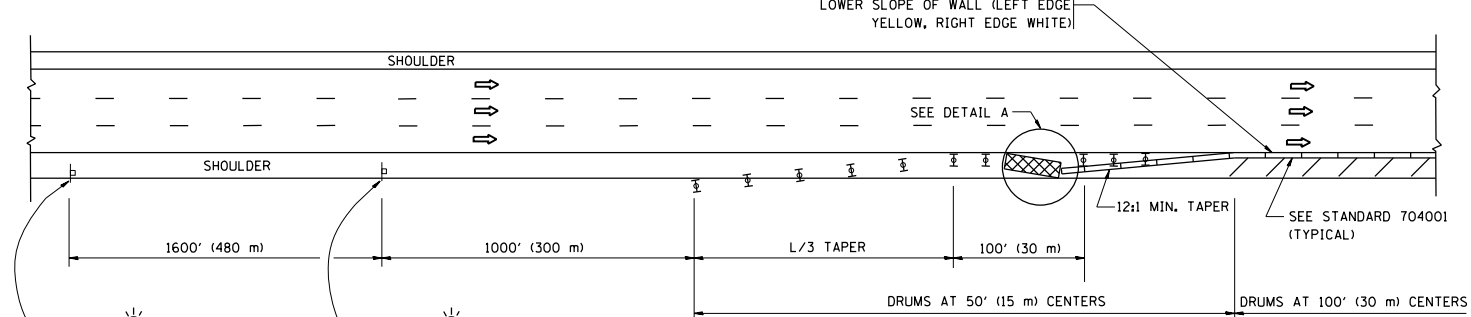
TYPICAL ENTRANCE RAMP



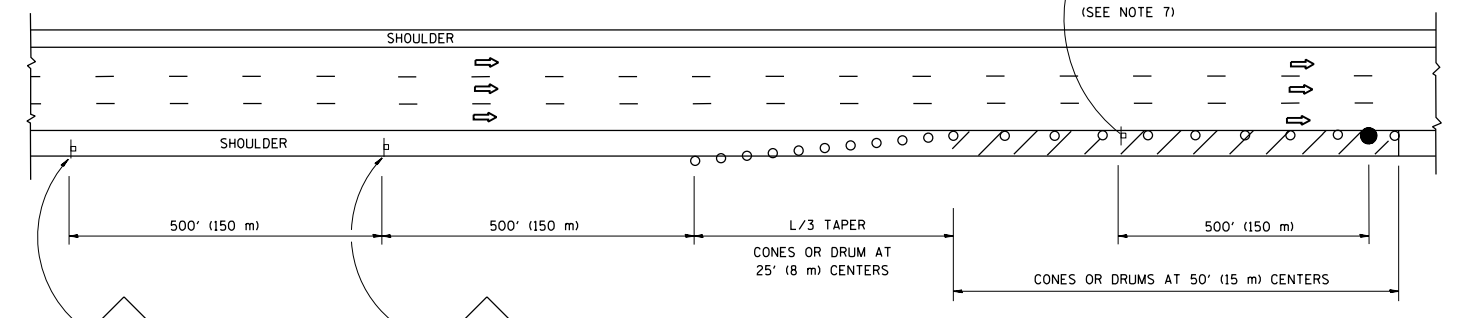
TYPICAL EXIT RAMP



TYPICAL EXIT RAMP



PERMANENT SHOULDER CLOSURE



DAYTIME SHOULDER CLOSURE

THIS DETAIL IS USED WHERE:
 1. VEHICLES, EQUIPMENT, WORKERS OR THEIR ACTIVITIES ENCRUSH IN AN AREA CLOSER THAN 15' (4.5 m) TO THE EDGE OF PAVEMENT FOR A PERIOD IN EXCESS OF 15 MINUTES.

SYMBOLS

- ACTIVE WORK AREA
- SIGN ON PORTABLE OR PERMANENT SUPPORT
- FLAGGER WITH CONTROL SIGN
- TYPE II BARRICADE OR DRUM WITH STEADY BURN MONO-DIRECTIONAL LIGHT
- CONE, DRUM OR BARRICADE
- IMPACT ATTENUATOR OF TYPE AND TEST LEVEL SPECIFIED

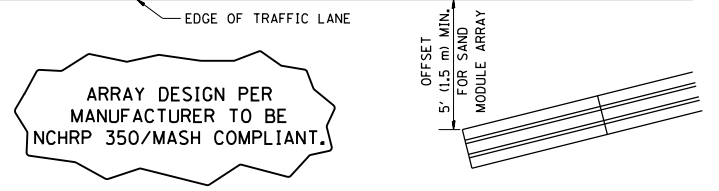
GENERAL NOTES

1. THE "L" DISTANCE EQUALS:

SPEED LIMIT	METRIC	ENGLISH
45 mph (80 km/h) OR GREATER:	$L=0.65(W)(S)$	$L=(W)(S)$

W = WIDTH OF OFFSET IN FEET (METERS)
 S = NORMAL POSTED SPEED MPH (KM/H)
2. PLASTIC DRUMS WITH HIGH PERFORMANCE REFLECTIVE SHEETING AND STEADY BURNING LIGHTS ARE REQUIRED FOR ALL NIGHTTIME CLOSURES.
3. ALL SIGNS SHALL BE POST MOUNTED IF THE CLOSURE TIME EXCEEDS FOUR DAYS.
4. FLASHING LIGHTS SHALL BE USED DURING THE HOURS OF DARKNESS AND SHALL BE INSTALLED ABOVE THE FIRST TWO SETS OF SIGNS.

5. THE IMPACT ATTENUATOR, TEMPORARY IS NOT REQUIRED WHEN THE TEMPORARY CONCRETE BARRIER WALL IS PROTECTED BY OR IS TIED INTO THE EXISTING GUARDRAIL. IF OFFSET IS LESS THAN 5 FEET USE NARROW USE TYPE DEVICE TO MEET NCHRP350/MASH.
6. AUTHORIZATION FROM THE DISTRICT'S BUREAU OF TRAFFIC IS REQUIRED FOR ALL FREEWAY CLOSURES.
7. THE FLAGGER AND FLAGGER SIGN ARE REQUIRED AT THE ABOVE WORK SITES WHEN:
 - a. FOUR OR MORE WORK VEHICLES ENTER THE TRAFFIC LANES IN A ONE HOUR PERIOD.
 - b. THE WORK AVTIVITY REQUIRES FREQUENT ENCRUSHMENT INTO THE LANE OPEN TO TRAFFIC.
 THE FLAGGER SHALL BE STATIONED APPROXIMATELY 100' (30 m) TO 200' (60 m) IN ADVANCE OF THE WORKERS.
8. 12' MIN. WIDTH TANGENT SECTION
 16' MIN. WIDTH CURVE SECTION.



DETAIL "A"
 IMPACT ATTENUATOR, TEMPORARY
 (SEE NOTE 5)

ALL DIMENSIONS ARE IN INCHES (MILLIMETERS) UNLESS OTHERWISE SHOWN.

FILE NAME = p:\11084EBID\INTEG\Illinois.gov\PIWOT\Documents\DOT Offices\District 1\Projects\DI385\Drawings\Design\DWG\15-shr-plandgn	USER NAME = pyzanosktrb	DESIGNED -	REVISED - J.A.F. 12-06	STATE OF ILLINOIS DEPARTMENT OF TRANSPORTATION	TRAFFIC CONTROL DETAILS FOR FREEWAY SHOULDER CLOSURES AND PARTIAL RAMP CLOSURES			F.A. RTE.	SECTION	COUNTY	TOTAL SHEETS	SHEET NO.	
PLOT SCALE = 1/8" = 1'-0"	CHECKED -	REVISED - S.P.B. 01-07	REVISED - S.P.B. 12-09		SCALE: NONE	SHEET NO. 1 OF 1 SHEETS	STA.	TO STA.	VAR	2016-0431	VARIOUS	19	19
PLOT DATE = 6/15/2016	DATE - 11-96	REVISED - M.D. 06-13							TC-17		CONTRACT NO. 62D26		
									FED. ROAD DIST. NO. 1 ILLINOIS FED. AID PROJECT				