

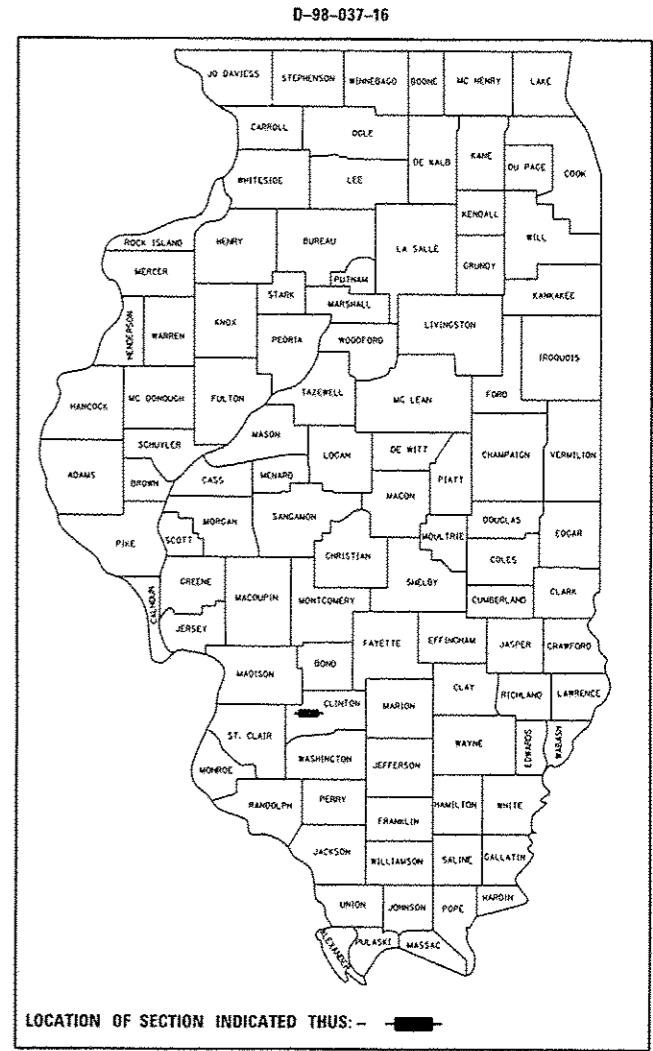
STATE OF ILLINOIS
DEPARTMENT OF TRANSPORTATION
DIVISION OF HIGHWAYS

F.A.P. RTE.	SECTION	COUNTY	TOTAL SHEETS	SHEET NO.
327	(14-12,14-13,14-14)PP-1	CLINTON	10	1
		ILLINOIS	CONTRACT NO. 76J56	

FOR INDEX OF SHEETS, SEE SHEET NO. 2

**PROPOSED
HIGHWAY PLANS**

FAP ROUTE 327 (US 50)
SECTION (14-12, 14-13, 14-14)PP-1
CONCRETE PATCHING
CLINTON COUNTY



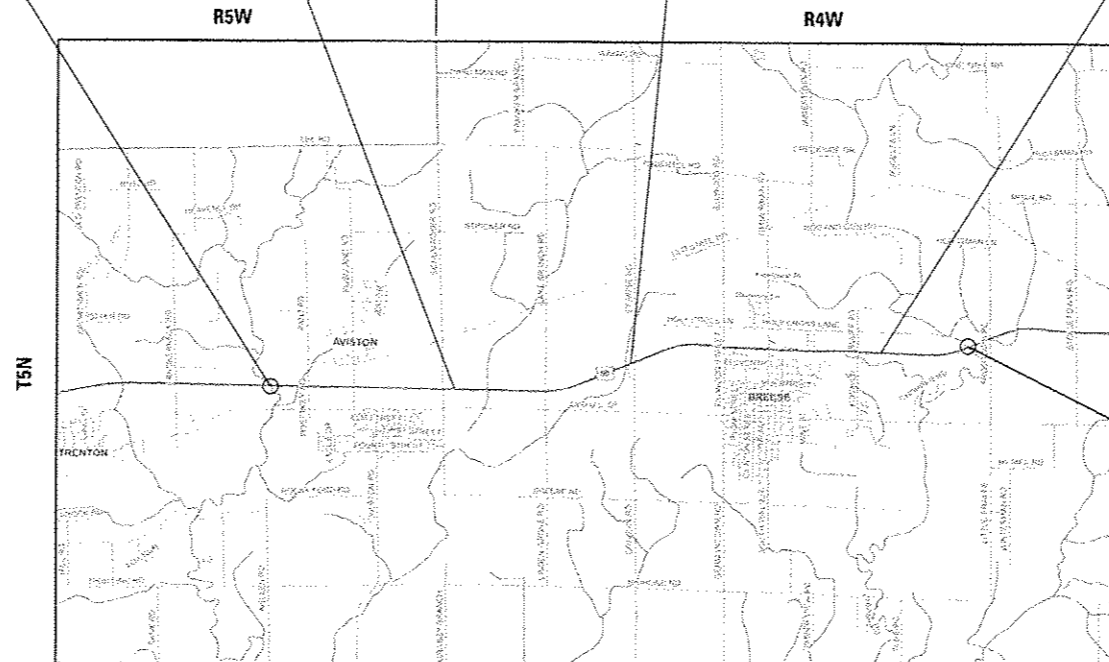
C-98-034-16

BEGIN PROJECT
SUGAR CREEK
LAT: 38.61605
LONG: -89.62999
STA 2772+65

2015 ADT = 6800 (ACTUAL)
2016 ADT = 6850 (ESTIMATED)
2036 ADT = 7900 (ESTIMATED)
SU = 10.7% MU = 11.0%

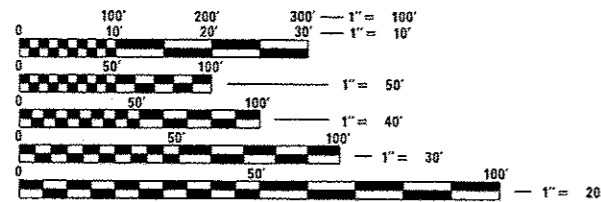
2015 ADT = 6300 (ACTUAL)
2016 ADT = 6350 (ESTIMATED)
2036 ADT = 7300 (ESTIMATED)
SU = 15.1% MU = 11.1%

2015 ADT = 6000 (ACTUAL)
2016 ADT = 6050 (ESTIMATED)
2036 ADT = 6900 (ESTIMATED)
SU = 8.8% MU = 11.3%



END PROJECT
SHOAL CREEK
LAT: 38.62214
LONG: -89.48407
STA 3190+25

MAP NOT TO SCALE



FULL SIZE PLANS HAVE BEEN PREPARED USING STANDARD ENGINEERING SCALES. REDUCED SIZED PLANS WILL NOT CONFORM TO STANDARD SCALES. IN MAKING MEASUREMENTS ON REDUCED PLANS, THE ABOVE SCALES MAY BE USED.

J.U.L.I.E.
JOINT UTILITY LOCATION INFORMATION FOR EXCAVATION
1-800-892-0123
OR 811

PROJECT ENGINEER: HERVE GELIN (618)346-3179
DESIGNER: ALVIN NIEVES-ROSARIO (618)346-3187

CONTRACT NO. 76J56

GROSS LENGTH = 41,760 FT. = 7.9 MILE
NET LENGTH = 41,760 FT. = 7.9 MILE

TOWNSHIPS
AVISTON TOWNSHIP
BREESE TOWNSHIP

STATE OF ILLINOIS
DEPARTMENT OF TRANSPORTATION
DIVISION OF HIGHWAYS

SUBMITTED *June 16 2016*
Jeffrey Z. Kam
REGIONAL ENGINEER

Aug 12 2016
Mohammmad M. Addis, P.E.
ENGINEER OF DESIGN AND ENVIRONMENT

Aug 12 2016
Onor Osman, P.E.
DIRECTOR OF HIGHWAYS, CHIEF ENGINEER

PRINTED BY THE AUTHORITY
OF THE STATE OF ILLINOIS

INDEX OF SHEETS

- 1 COVER SHEET
- 2 INDEX OF SHEETS, GENERAL NOTES, COMMITMENTS & STANDARDS
- 3 SUMMARY OF QUANTITIES
- 4-5 TYPICAL SECTIONS
- 6-8 SCHEDULE OF QUANTITIES
- 9-10 BRIDGE APPROACH STANDARD

GENERAL NOTES

1. ILLINOIS STATE LAW REQUIRES A 48-HOUR NOTICE TO BE GIVEN TO UTILITIES BEFORE DIGGING. FIELD MARKING OF FACILITIES MAY BE OBTAINED BY CONTACTING J.U.L.I.E. (1-800-892-0123 OR 811) OR FOR NON-MEMBERS THE UTILITY COMPANY DIRECTLY.
2. THE CONTRACTOR AND THE ENGINEER SHALL BE AWARE THAT NO SURVEY WAS PERFORMED FOR THIS PROJECT. THE STATIONING, TOPOGRAPHY, AND QUANTITIES SHOWN IN THE PLANS WERE CREATED USING MICROFILM AND FIELD MEASUREMENTS. ALL SHALL BE ASSUMED TO BE APPROXIMATE. THE CONTRACTOR SHALL VERIFY DIMENSIONS AND CONDITIONS IN THE FIELD PRIOR TO CONSTRUCTION AND ORDERING OF MATERIALS.
3. NO OVERNIGHT LANE CLOSURES SHALL BE PERMITTED.
4. FLAGGERS SHALL BE REQUIRED AT ALL TIMES DURING PATCHING OPERATIONS.
5. ALL TURF AREAS DISTURBED BY THE CONTRACTOR SHALL BE SEEDED AS DIRECTED BY THE ENGINEER, AT THE CONTRACTOR'S EXPENSE.
6. THE PROPOSED PAVEMENT MARKING SHALL MATCH THE LOCATIONS OF THE EXISTING PAVEMENT MARKING, AND AS DIRECTED BY THE ENGINEER.
7. RAISED REFLECTIVE PAVEMENT MARKER REMOVAL SHALL BE INCLUDED IN THE COST OF THE CORRESPONDING PATCHING PAY ITEM AND NO ADDITIONAL COMPENSATION WILL BE ALLOWED.
8. THE CONTRACTOR AND THE ENGINEER SHALL BE AWARE THAT THERE IS AN EXISTING APPROACH PAVEMENT OF APPROXIMATELY 100' ON EACH STRUCTURE END FOR SN 014-0049, 014-0066, 014-0067 & 014-0058. NO PATCHING SHALL BE ALLOWED AT THESE LOCATIONS. SEE BRIDGE APPROACH PAVEMENT PLAN SHEETS FOR DETAILS.
9. THE ENGINEER SHALL CONTACT THE OPERATIONS FIELD TECHNICIAN JASON ROECKENHAUS AT (618) 594-3001 PRIOR TO MARKING PATCHING LOCATIONS.

STANDARDS

- 000001-06 STANDARDS, SYMBOLS, ABBREVIATIONS AND PATTERNS
- 001001-02 AREAS OF REINFORCEMENT BARS
 - 001006 DECIMAL OF AN INCH AND OF A FOOT
- 420001-08 PAVEMENT JOINTS
- 442001-04 CLASS A PATCHES
- 701001-02 OFF RD OPERATIONS, 2L, 2W, MORE THAN 15' (4.5m) AWAY
- 701006-05 OFF RD OPERATIONS, 2L, 2W, 15' (4.5m) TO 24" (600mm) FROM PAVEMENT EDGE
- 701011-04 OFF RD OPERATIONS, 2L, 2W, DAY ONLY
- 701101-05 OFF RD OPERATIONS, MULTILANE, 15' (4.5m) TO 24" (600mm) FROM PAVEMENT EDGE
- 701106-02 OFF RD OPERATIONS, MULTILANE, MORE THAN 15' (4.5m) AWAY
- 701201-04 LANE CLOSURE, 2L, 2W, DAY ONLY, FOR SPEEDS \geq 45 MPH
- 701301-04 LANE CLOSURE, 2L, 2W, SHORT TIME OPERATION
- 701311-03 LANE CLOSURE, 2L, 2W MOVING OPERATIONS-DAY ONLY
- 701336-06 LANE CLOSURE, 2L, 2W, WORK AREAS IN SERIES, FOR SPEEDS \geq 45 MPH
- 701411-09 LANE CLOSURE, MULTILANE, AT ENTRANCE OR EXIT RAMP, FOR SPEEDS \geq 45 MPH
- 701421-07 LANE CLOSURE, MULTILANE, DAY OPERATIONS ONLY, FOR SPEEDS \geq 45MPH TO 55 MPH
- 701426-08 LANE CLOSURE, MULTILANE, INTERMITTENT OR MOVING OPER., FOR SPEEDS \geq 45 MPH
- 701901-05 TRAFFIC CONTROL DEVICES
- 780001-05 TYPICAL PAVEMENT MARKINGS
- 781001-04 TYPICAL APPLICATIONS RAISED REFLECTIVE PAVEMENT MARKERS

COMMITMENTS

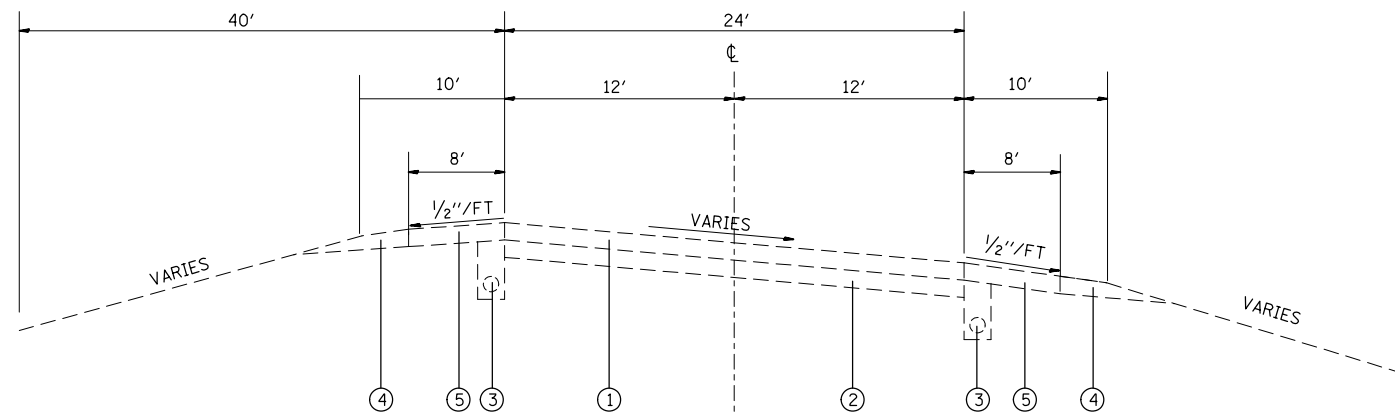
NONE

FILE NAME : p:\IL08\EBID\INTEG\Illinois.gov\FWIDOT\Documents\DOT Offices\District 8\Projects\0875\Drawings\040\sheet\0876J56-rht-gennit	USER NAME : f_misova	DESIGNED -	REVISED -	STATE OF ILLINOIS DEPARTMENT OF TRANSPORTATION	INDEX OF SHEETS, HIGHWAY STANDARDS, GENERAL NOTES & COMMITMENTS	F.A.P. RTE.	SECTION	COUNTY	TOTAL SHEETS	SHEET NO.
	PLOT SCALE = 5000.0000 / in.	CHECKED -	REVISED -			327	(14-12,14-13,14-14)PP-1	CLINTON	10	2
	PLOT DATE = 6/14/2015	DATE -	REVISED -			CONTRACT NO. 76J56				
	SCALE: NONE					SHEET NO. 1 OF 1 SHEETS	STA. TO STA.	FED. ROAD DIST. NO.	ILLINOIS FED. AID PROJECT	

CODE NO.	ITEM	UNIT	TOTAL QUANTITY	CONSTR. CODE	
				0005	RURAL
				100% STATE	
44200529	CLASS A PATCHES, TYPE II, 8 INCH	SQ YD	312	312	
44200533	CLASS A PATCHES, TYPE III, 8 INCH	SQ YD	320	320	
44200535	CLASS A PATCHES, TYPE IV, 8 INCH	SQ YD	860	860	
44213000	PATCHING REINFORCEMENT	SQ YD	1492	1492	
44213200	SAW CUTS	FOOT	5640	5640	
44213204	TIE BARS 3/4"	EACH	277	277	
67000400	ENGINEER'S FIELD OFFICE, TYPE A	CAL MO	3	3	
67100100	MOBILIZATION	LSUM	1	1	
70100310	TRAFFIC CONTROL AND PROTECTION, STANDARD 701421	LSUM	1	1	
70100420	TRAFFIC CONTROL AND PROTECTION, STANDARD 701411	EACH	4	4	
70100450	TRAFFIC CONTROL AND PROTECTION, STANDARD 701201	LSUM	1	1	
70100600	TRAFFIC CONTROL AND PROTECTION, STANDARD 701336	LSUM	1	1	
* 78001110	PAINT PAVEMENT MARKING - LINE 4"	FOOT	1550	1550	
* 78100100	RAISED REFLECTIVE PAVEMENT MARKER	EACH	63	63	

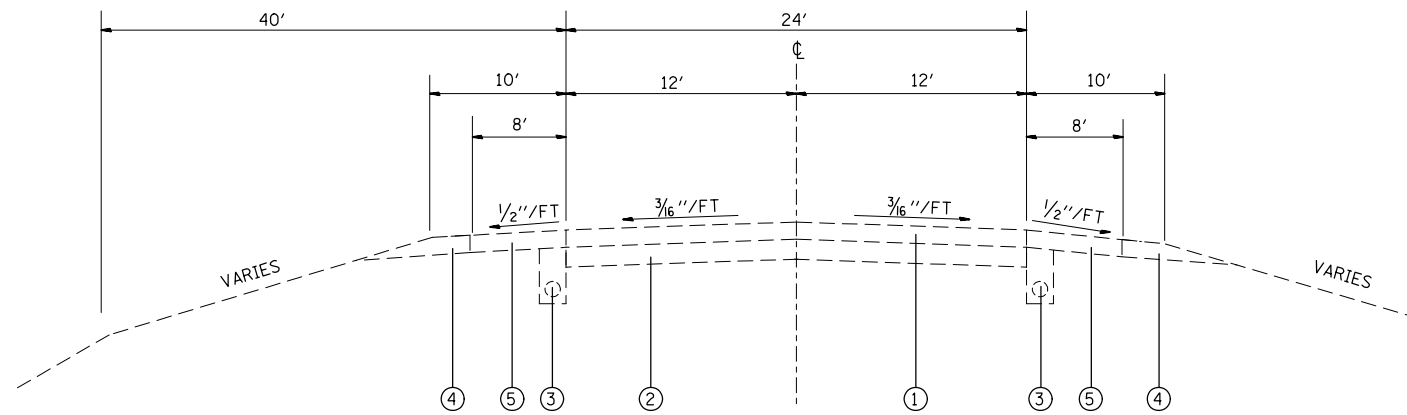
SPECIALTY ITEMS

FILE NAME =	USER NAME = rnavoso	DESIGNED -	REVISED -	STATE OF ILLINOIS DEPARTMENT OF TRANSPORTATION	SUMMARY OF QUANTITIES				F.A.P. RTE.	SECTION	COUNTY	TOTAL SHEETS	SHEET NO.
p:\11884EBIDINTEG\Illinois.gov\PI\DOT\Documents\1007 Offices\District 9\Projects\0875\OB\DATA\6AD\sheet\0875\8ht-500.dwg	ORIGINATOR =	CHECKED -	REVISED -						327	04-12,14-13,14-14/PP-1	CLINTON	10	3
PLOT SCALE = 1/8" = 1'-0"		DATE -	REVISED -		CONTRACT NO. T6J56								
PLOT DATE = 6/14/2016					SCALE: NONE	SHEET NO. 1 OF 1 SHEETS	STA.	TO STA.	FED. ROAD DIST. NO.	ILLINOIS FED. AID PROJECT			



US ROUTE 50
 •STA 2921+12 TO STA 2944+09
 STA 3011+89 TO STA 3034+06
 STA 3169+28 TO STA 3190+25

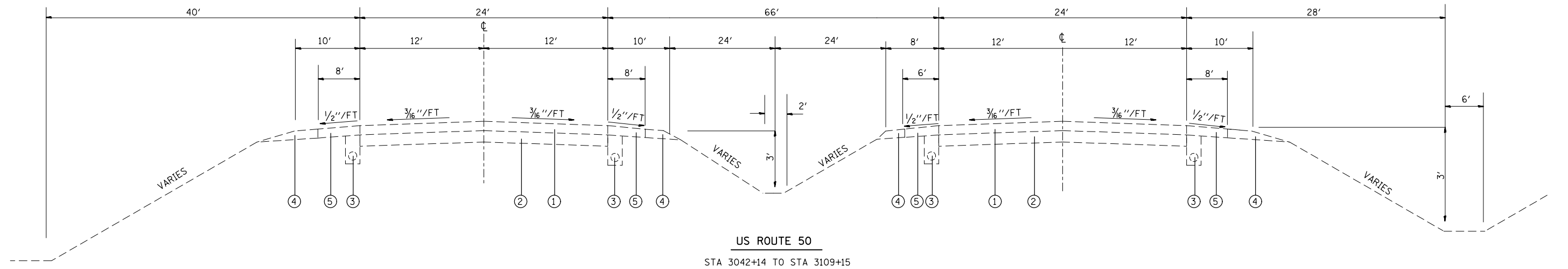
- LEGEND**
- ① EXISTING CRPCC PAVEMENT 7", 8", OR 9" (SEE SCHEDULE)
 - ② EXISTING STABILIZED SUB-BASE CAM II 4"
 - ③ EXISTING PIPE UNDERDRAINS 4"
 - ④ EXISTING AGGREGATE SHOULDER TYPE B
 - ⑤ EXISTING P.C. CONCRETE SHOULDER
- EXISTING HMA SHOULDERS



US ROUTE 50
 •STA 2772+65 TO STA 2921+12
 •STA 2944+09 TO STA 2978+94
 STA 2978+94 TO STA 3011+89
 STA 3034+06 TO STA 3042+14
 STA 3109+15 TO STA 3169+28

DEPTH SCHEDULE			
STATION		STATION	DEPTH
2772+65	TO	2980+26	8"
2980+26	TO	3005+50	9"
3005+50	TO	3037+49	8"
3037+49	TO	3074+35	8"
3074+35	TO	3075+67	BA
3077+20	TO	3078+52	BA
3078+52	TO	3117+70	8"
3117+70	TO	3144+47	8"
3144+47	TO	3190+25	7"

BA - BRIDGE APPROACH PAVEMENT



LEGEND

- ① EXISTING CRPCC PAVEMENT 7", 8", OR 9" (SEE SCHEDULE)
- ② EXISTING STABILIZED SUB-BASE CAM II 4"
- ③ EXISTING PIPE UNDERDRAINS 4"
- ④ EXISTING AGGREGATE SHOULDER TYPE B
- ⑤ EXISTING P.C. CONCRETE SHOULDER
- EXISTING HMA SHOULDERS

FILE NAME =	USER NAME = nievesa	DESIGNED -	REVISED -
pw:\11\084EBID\INTEG\illinois.gov\PWIDOT\Documents\DOT Offices\District 8\Projects\0876\DRAWING\DATA\EA0\sheet\0876\sh-t\typo\10		CHECKED -	REVISED -
		DATE -	REVISED -

**STATE OF ILLINOIS
DEPARTMENT OF TRANSPORTATION**

TYPICAL SECTIONS

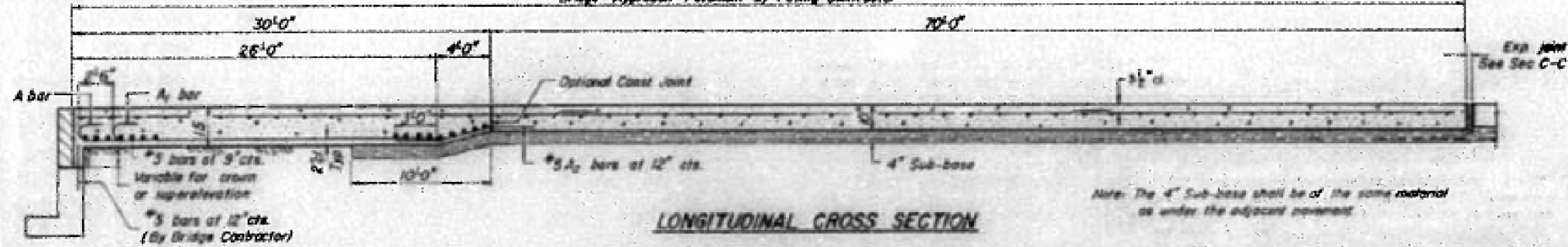
SCALE: NONE SHEET NO. 2 OF 2 SHEETS STA. TO STA.

F.A.P. RTE.	SECTION	COUNTY	TOTAL SHEETS	SHEET NO.
327	(14-12, 14-13, 14-14)PP-1	CLINTON	10	5
				CONTRACT NO. 76J56
FED. ROAD DIST. NO. 8 ILLINOIS FED. AID PROJECT				

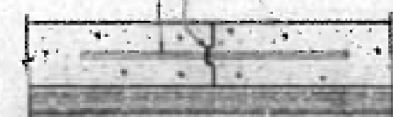
CLASS A PATCHING SCHEDULE EB													
STATION	LOCATION	WIDTH	LENGTH	CLASS A PATCHES 8"			PATCHING REINFORCEMENT	SAW CUTS	TIE BARS 3/4"	RAISED REFLECTIVE PAVEMENT MARKERS	PAINT PAVEMENT MARKING - LINE 4"		
				TYPE II	TYPE III	TYPE IV				AMBER	SKIP DASH YELLOW	SOLID WHITE	
		FOOT	FOOT	SQ YD			SQ YD	FOOT	EACH	EACH	FOOT		
2792+23	EB	12	6	8			8	60		1	6	6	
2797+10	EB	12	18		24		24	84		1	10	18	
2797+59	EB	12	10	14			14	68		1	10	10	
2798+37	EB	12	12		16		16	72		1	10	12	
2800+30	EB	12	13		18		18	74		1	10	13	
2802+57	EB	12	30			40	40	108	14	1	10	30	
2804+35	EB	6.5	12	9			9	50		1	10	12	
2805+96	EB	12	37			50	50	122	18	1	10	37	
2809+17	EB	14	15		24		24	86		1	10	15	
2812+56	EB	9	18		18		18	72		1	10	18	
2814+82	EB	10	23			26	26	86	11	1	10	23	
2819+12	EB	10	18		20		20	76		1	10	18	
2819+30	EB	10	27			30	30	94	13	1	10	27	
2826+72	EB	7	24		19		19	76	11	1	10	24	
2828+73	EB	13.5	7	11			11	68		1	7	7	
2829+75	EB	12	18		24		24	84		1	10	18	
2836+10	EB	12	6	8			8	60		1	6	6	
2849+90	EB	12	6	8			8	60		1	6	6	
2853+07	EB	12	18		24		24	84		1	10	18	
2857+50	EB	12	19			26	26	86		1	10	19	
2868+30	EB	12	19			26	26	86		1	10	19	
2871+78	EB	12	14		19		19	76		1	10	14	
2877+90	EB	12	7	10			10	62		1	7	7	
2894+20	EB	12	6	8			8	60		1	6	6	
2894+86	EB	12	32			43	43	112	15	1	10	32	
2916+00	EB	12	6	8			8	60		1	6	6	
2936+05	EB	12	6	8			8	60		1	6	6	
2975+11	EB	12	25			34	34	98	12	1	10	25	
3048+51	EB	12	6	8			8	60		1	6	6	
3050+02	EB	12	23			31	31	94	11	1	10	23	
3120+61	EB	6	8	6			6	40		1	8	8	
SUBTOTAL EB					106	206	306	618	2378	103	31	274	489
15% SUBTOTAL FOR ANTICIPATED FAILURES					16	31	46	93	357	16			
TOTAL EB					122	237	352	711	2735	119	31		763

Note: Tilt hook of #9 bars for min 3 1/2' d. Use 1'-4" Min. Lap for #4 bars. Use 1'-8" Min. Lap for #5 bars.

Bridge Approach Pavement by Paving Contractor



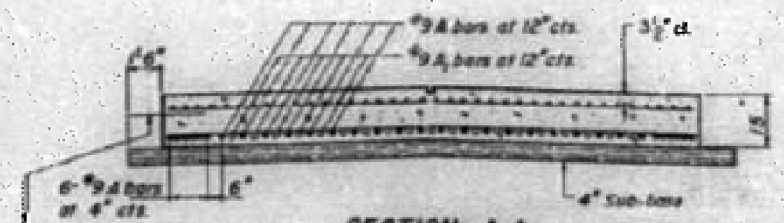
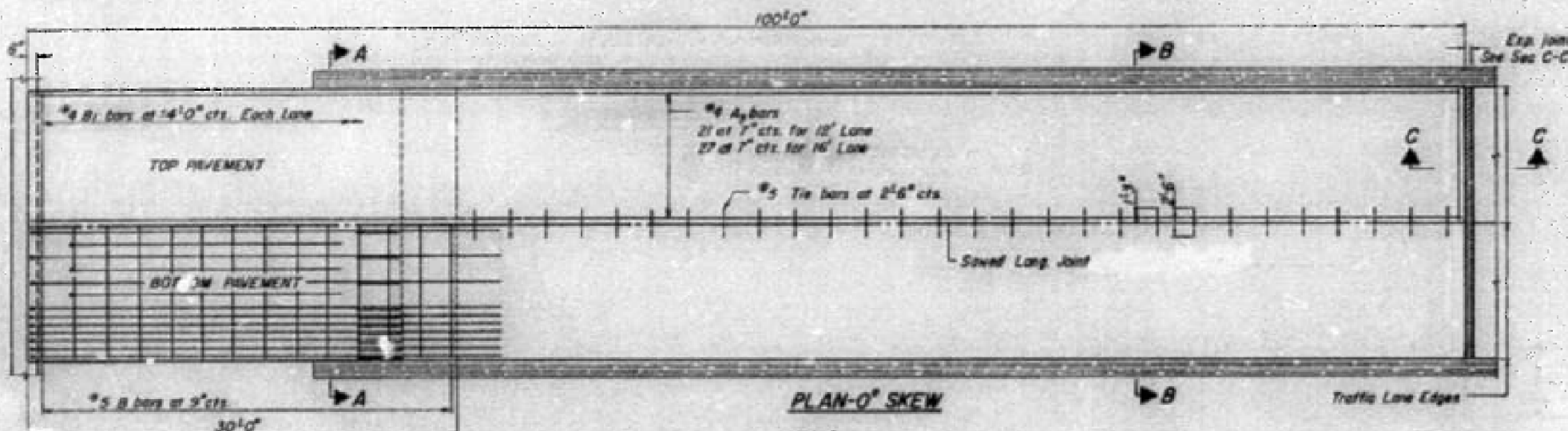
#5 steel tie bars at 2'-6" cts. Keyed long const jt in accordance with details shown on Standard 2353



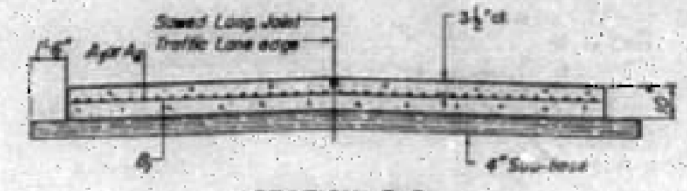
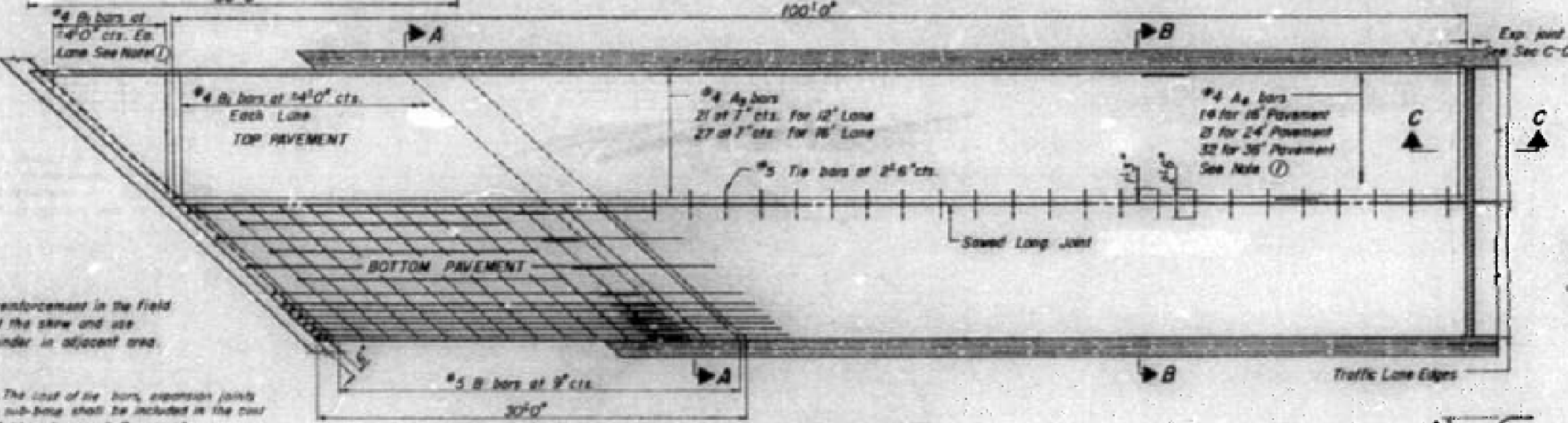
OPTIONAL LONG CONST JOINT

As approved by the Engineer, the contractor may elect to reduce the width by use of the Optional Longitudinal Construction Joint shown. Joint shall be located at the edge of Traffic Lane.

FOR INFORMATION ONLY



Note: When the road plans show curb and gutter, gutter or bridge approach shoulder pavement adjacent to approach slabs, place 1" steel tie bars at 2'-6" centers in accordance with the details for Bulkhead Longitudinal Construction Joint shown on Standard 2323. Cost of the tie bars will be included in the contract unit price for the adjacent item. Transitions for curb and gutter shall be as shown on the plans.

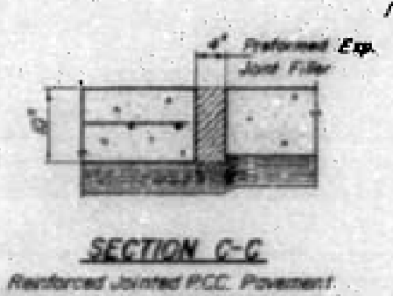
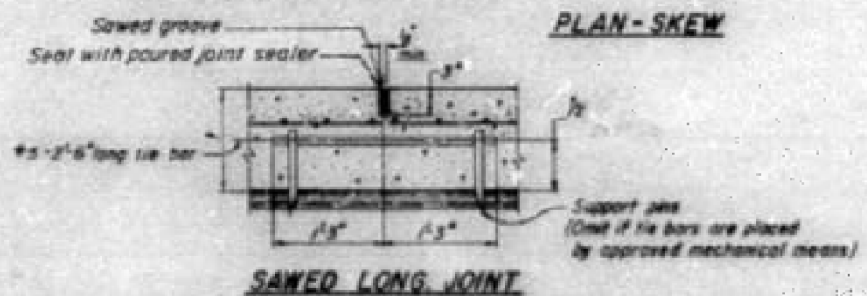


Finish corners with edge 2" preferred expansion joint filler. 14" dia x 18" long precaster smooth dowel bars at 12" cts. Fill with PMF 3 or 4 if joint filler conforms to Art 715.05 or 715.06 of the Standard Specifications. 4" for 1" min if tapered. Approved dowel bar assembly with cap.



SECTION C-C
Continue Reinforced P.C.C. Pavement

① Cut reinforcement in the field to fit the skew and use remainder in adjacent area.
Note: The cost of tie bars, expansion joints and sub-base shall be included in the cost of Bridge Approach Pavement.



Illinois Department of Transportation
DESIGNED BY: [Signature]
APPROVED BY: [Signature]
DATE: 6/15/2016

BRIDGE APPROACH PAVEMENT
(Sheet 1 of 2)
STANDARD 2353-5

FILE NAME =	USER NAME = nievesa	DESIGNED -	REVISED -	STATE OF ILLINOIS DEPARTMENT OF TRANSPORTATION	FOR INFORMATION ONLY - BRIDGE APPROACH STANDARD			F.A.P. R.T.E.	SECTION	COUNTY	TOTAL SHEETS	SHEET NO.
pw\11084EBIDINTEG\111nois.gov\PIDOT\Documents\DOT Offices\District 8\Projects\0876\DRAWING\60\Sheets\0876J56-sht-deta	DRAWN BY =	CHECKED -	REVISED -					327	(14-12, 14-13, 14-14)PP-1	CLINTON	10	9
PLOT SCALE = 100.0000' / 1"	CHECKED -	REVISED -	REVISED -					CONTRACT NO. 76J56				
PLOT DATE = 6/15/2016	DATE -	REVISED -	REVISED -					FED. ROAD DIST. NO. 8 (ILLINOIS) FED. AID PROJECT				

H 5 20 e

QUANTITIES FOR 100-FOOT APPROACH SLAB

Skew Angle	Bottom Reinforcement				Top Reinforcement				Total Weight bars-lbs.
	#5 B bars		A		#4 A ₃ bars		#4 A ₄ bars		
	No.	Length	A ₁	A ₂	No.	Length	No.	Length	

Skew Angle	Bottom Reinforcement				Top Reinforcement				Total Weight bars-lbs.
	#5 B bars		A		#4 A ₃ bars		#4 A ₄ bars		
	No.	Length	A ₁	A ₂	No.	Length	No.	Length	

Skew Angle	Bottom Reinforcement				Top Reinforcement				Total Weight bars-lbs.
	#5 B bars		A		#4 A ₃ bars		#4 A ₄ bars		
	No.	Length	A ₁	A ₂	No.	Length	No.	Length	

16-FOOT WIDTH PAVEMENT

Skew Angle	#5 B bars	A	B ₁	#4 A ₃ bars	#4 A ₄ bars	Total Weight bars-lbs.
0°	40	15'-6"		B1	34'-3"	5980
5°	40	15'-7"		B1	34'-0"	6010
10°	40	15'-9"		B1	33'-10"	6030
15°	40	16'-1"		B1	33'-7"	6030
20°	40	16'-6"		B1	33'-5"	6050
25°	40	17'-1"		B1	33'-2"	6070
30°	40	17'-11"		B1	32'-11"	6110
35°	40	18'-11"		B1	32'-7"	6150
40°	40	20'-3"		B1	32'-3"	6200
45°	40	21'-11"		B1	31'-11"	6280
50°	40	24'-1"		B1	31'-5"	6370
55°	40	27'-0"		B1	30'-11"	6490
60°	40	31'-0"		B1	30'-2"	6660

24-#5 A bars 27'-0"
11-#5 A₃ bars 20'-3"
24-#5 A₄ bars 10'-0"
26-#4 B₁ bars 15'-6"
Bridge Approach Pavement 178 Sq. Yds.

24-FOOT WIDTH PAVEMENT

Skew Angle	#5 B bars	A	B ₁	#4 A ₃ bars	#4 A ₄ bars	Total Weight bars-lbs.
0°	40	23'-6"		126	34'-3"	8840
5°	40	23'-7"		126	33'-10"	8880
10°	40	23'-10"		126	33'-6"	8890
15°	40	24'-4"		126	33'-2"	8910
20°	40	25'-0"		126	32'-9"	8940
25°	40	25'-11"		126	32'-4"	8980
30°	40	27'-2"		126	31'-11"	9030
35°	40	28'-8"		126	31'-5"	9190
40°	40	30'-8"		126	30'-10"	9170
45°	40	33'-3"		126	30'-3"	9290
50°	40	39'-1"		126	29'-5"	9490
55°	40	47'-4"		126	28'-6"	9680
60°	40	58'-4"		126	27'-3"	9940

32-#5 A bars 27'-0"
19-#5 A₃ bars 20'-3"
38-#5 A₄ bars 10'-0"
52-#4 B₁ bars 11'-6"
Bridge Approach Pavement 287 Sq. Yds.

36-FOOT WIDTH PAVEMENT

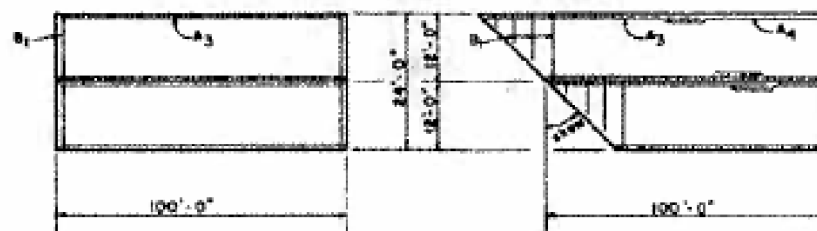
Skew Angle	#5 B bars	A	B ₁	#4 A ₃ bars	#4 A ₄ bars	Total Weight bars-lbs.
0°	40	35'-6"		189	34'-3"	13040
5°	40	35'-8"		189	33'-8"	13090
10°	40	36'-0"		189	33'-2"	13110
15°	40	37'-4"		189	32'-8"	13230
20°	40	39'-10"		189	32'-0"	13260
25°	40	40'-7"		189	31'-5"	13330
30°	40	41'-6"		189	30'-9"	13410
35°	40	42'-8"		189	30'-0"	13510
40°	40	44'-2"		189	29'-2"	13630
45°	40	46'-2"		189	28'-5"	13840
50°	40	48'-8"		189	27'-1"	14050
55°	40	52'-0"		189	25'-8"	14330
60°	40	58'-7"		189	23'-10"	14710

44-#5 A bars 27'-0"
31-#5 A₃ bars 20'-3"
44-#5 A₄ bars 10'-0"
79-#4 B₁ bars 11'-6"
Bridge Approach Pavement 400 Sq. Yds.

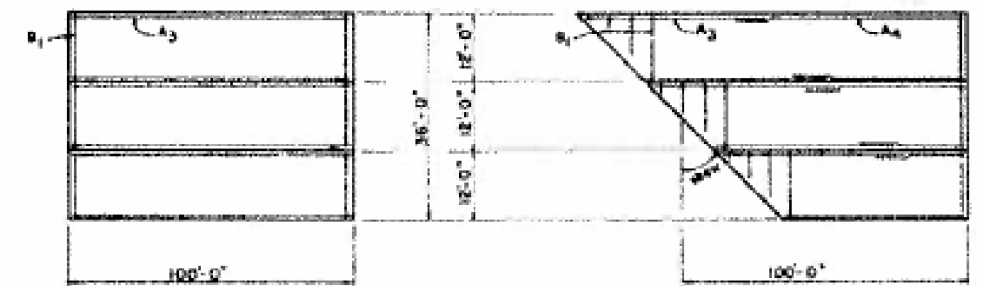
TOP OF SLAB BAR ARRANGEMENT



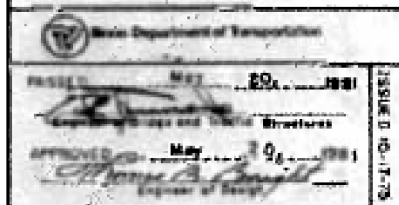
TOP OF SLAB BAR ARRANGEMENT



TOP OF SLAB BAR ARRANGEMENT



FOR INFORMATION ONLY



BRIDGE APPROACH PAVEMENT
(Sheet 2 of 2)
STANDARD 2353-5

FILE NAME =	USER NAME = nievesa	DESIGNED -	REVISED -	STATE OF ILLINOIS DEPARTMENT OF TRANSPORTATION	FOR INFORMATION ONLY - BRIDGE APPROACH STANDARD	SCALE: NONE	SHEET NO. 2 OF 2 SHEETS	STA.	TO STA.	F.A.P. RTE.	SECTION	COUNTY	TOTAL SHEETS	SHEET NO.
pw\11084EBIDINTEG.111nois.gov\PIWIDOT\Documents\DOT Offices\District 8\Projects\0876\DRAWINGData\EAD\Sheets\0876J56-sht-data	CHECKED -	REVISED -	327							(14-12, 14-13, 14-14)PP-1	CLINTON	10	10	
PLOT SCALE = 100.0000' / in.	DATE -	REVISED -	CONTRACT NO. 76J56											
PLOT DATE = 6/15/2016	DATE -	REVISED -	FED. ROAD DIST. NO. 8 (ILLINOIS) FED. AID PROJECT											