

STATE OF ILLINOIS
DEPARTMENT OF TRANSPORTATION
DIVISION OF HIGHWAYS
PROPOSED
HIGHWAY PLANS

FAP ROUTE 399 (IL 8)
SECTION (37)I

TYPE of IMPROVEMENT CONTRACT MAINTENANCE
TAZEWELL COUNTY

C-94-061-16

F.A.P. RTE. 399	SECTION (37)I	COUNTY TAZEWELL	TOTAL SHEETS 16	SHEET NO. 1
ILLINOIS			CONTRACT NO. 68D18	

FOR INDEX OF SHEETS, SEE SHEET NO.

- 1 COVER SHEET
- 2 GENERAL NOTES /COMMITMENTS
- 3 SUMMARY OF QUANTITIES
- 4 TYPICAL SECTION
- 5 LINE DIAGRAM
- 6 SCHEDULE OF QUANTITIES
- 7 TRAFFIC CONTROL AND PROTECTION (SPECIAL) DETAIL
- 8 CORES AND PAVEMENT SETTLEMENT INFORMATION
- 9 SIDEWALK AND RETAINING WALL DETAIL
- 10 EXISTING CULVERT DETAIL
- 11 EXISTING ROADWAY PROFILE
- 12 EXISTING DRAINAGE DETAIL
- 13-16 EXISTING CROSS SECTION

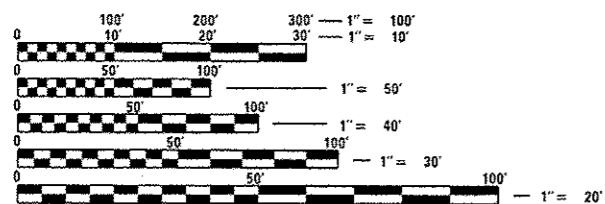
HIGHWAY STANDARDS

- 701602-07
- 701801-06
- 701901-05

- ADT = 13,900
- MU = 1.62%
- SU = 3.78%

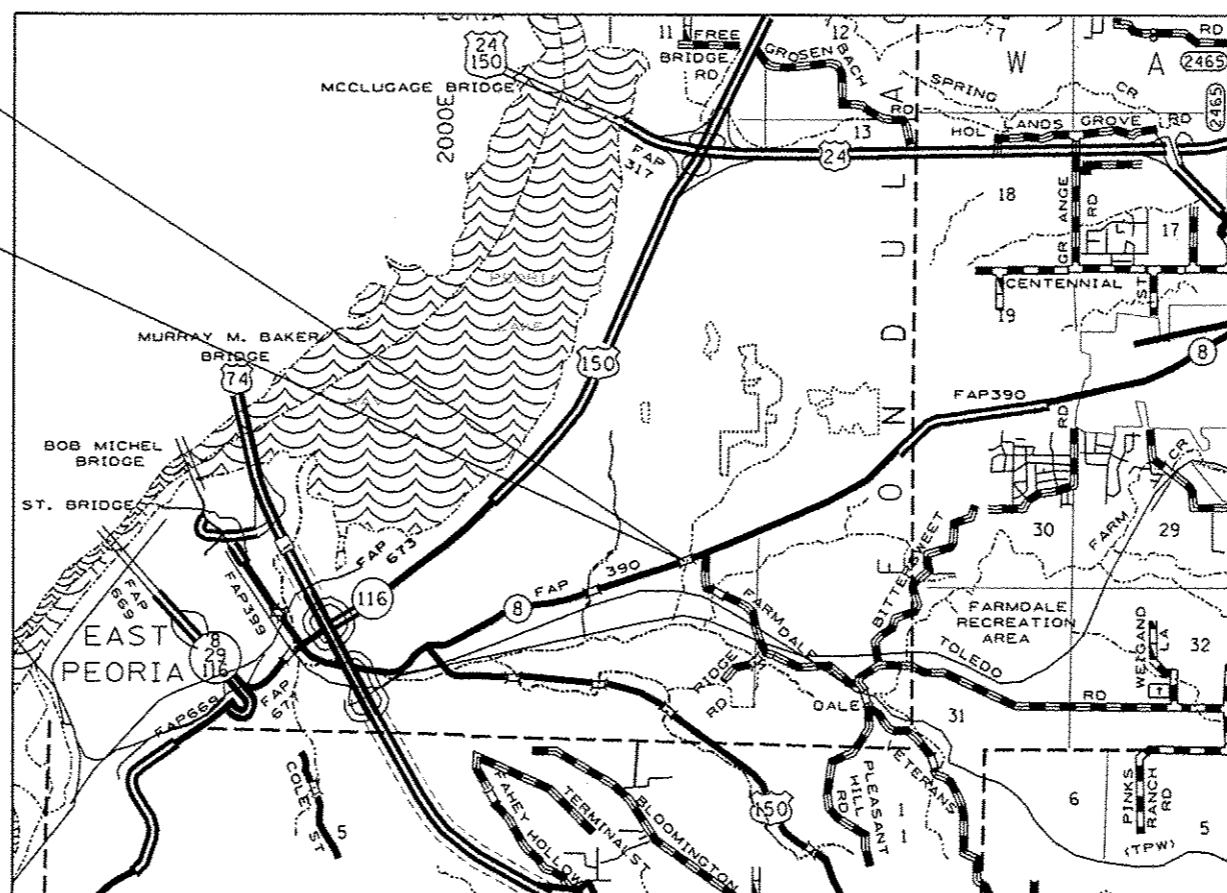
PROJECT BEGINS
EBL STA. 7 + 350 (Metric)

PROJECT ENDS
EBL STA. 7 + 388 (Metric)



FULL SIZE PLANS HAVE BEEN PREPARED USING STANDARD ENGINEERING SCALES. REDUCED SIZED PLANS WILL NOT CONFORM TO STANDARD SCALES. IN MAKING MEASUREMENTS ON REDUCED PLANS, THE ABOVE SCALES MAY BE USED.

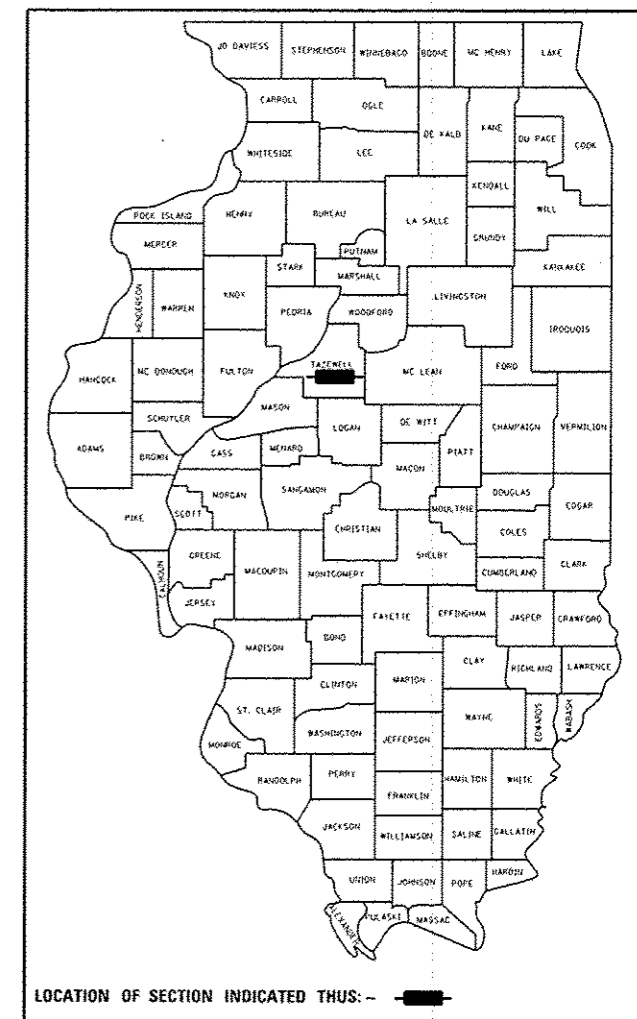
J.U.L.I.E.
 JOINT UTILITY LOCATION INFORMATION FOR EXCAVATION
 1-800-892-0123
 OR 811



PROJECT ENGINEER: CHRISTOPHER MAUSHARD 309-671-3453
PROJECT MANAGER: SOBHI LABABIDI/RAYMOND SAMARA 309-671-3460
CATALOG NO. 035403-00D
CONTRACT NO. 68D18

GROSS LENGTH = 125 FT. = 0.023 MILE
 NET LENGTH = 125 FT. = 0.023 MILE

D-94-027-16



PROJECT DESCRIPTION:
PAVEMENT JACKING OF THE EASTBOUND LANES ON IL 8 AT 0.23 MILE EAST OF ILLINI DRIVE IN EAST PEORIA

STATE OF ILLINOIS
 DEPARTMENT OF TRANSPORTATION
 DIVISION OF HIGHWAYS

SUBMITTED 5/20 20 16
Kenneth G. Smith
 REGION THREE ENGINEER

July 1 20 16
Maurice M. Addis PE Jr
 ENGINEER OF DESIGN AND ENVIRONMENT

July 1 20 16
Omer Osman PE Jr
 DIRECTOR OF HIGHWAYS, CHIEF ENGINEER

PRINTED BY THE AUTHORITY
OF THE STATE OF ILLINOIS

COMMITMENTS

No Commitments have been made for this project.

ENVIRONMENTAL REVIEWS

Prior to the use of any proposed borrow areas, use areas (temporary access roads, detours, run-arounds, etc.) and/or waste areas, the Contractor shall file the required environmental resource request surveys according to Section 107.22 of the Standard Specifications. These surveys are required in order for the Department to conduct cultural and biological resource surveys for the proposed site.

Prior to any waste materials being removed from the construction site the required environmental resource surveys will need to be obtained and filed by the Contractor. Excess waste products removed from the construction site shall be disposed of as required in Section 202.03 of the Standard Specifications.

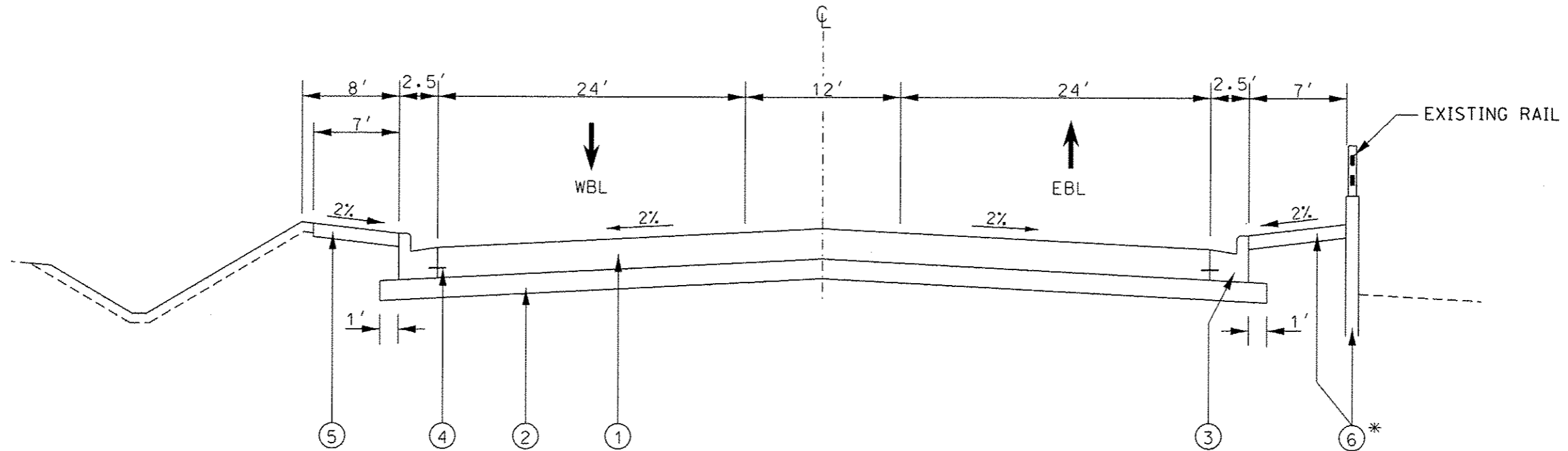
Any protruding metal bars shall be removed prior to the disposal of broken concrete at approved disposal sites.

The required environmental resource documentation shall include the following:

- * BDE Form 2289 (Environmental Survey Request)
- * A location map showing the size limits and location of the use area
- * Signed property owner agreement form-D4 PI0100
- * Color photographs depicting the use area
- * Borrow Area Entry Agreement form-D4 PI0101

Please note that a minimum of two weeks shall be allowed for the District to obtain the required environmental clearances.

FILE NAME * 68D18.dgn Default	USER NAME * lobbaidiam	DESIGNED -	REVISED -	STATE OF ILLINOIS DEPARTMENT OF TRANSPORTATION	GENERAL NOTES /COMMITMENTS	F.A.P. RTE. 399	SECTION 137H	COUNTY TAZEWELL	TOTAL SHEETS 16	SHEET NO. 2
	PLOT SCALE * 100.0000' / 1" =	CHECKED -	REVISED -			CONTRACT NO. 68D18				
	PLOT DATE * 5/20/2016	DATE -	REVISED -			ILLINOIS FED. AID PROJECT				
SCALE: SHEET OF SHEETS STA. TO STA.										



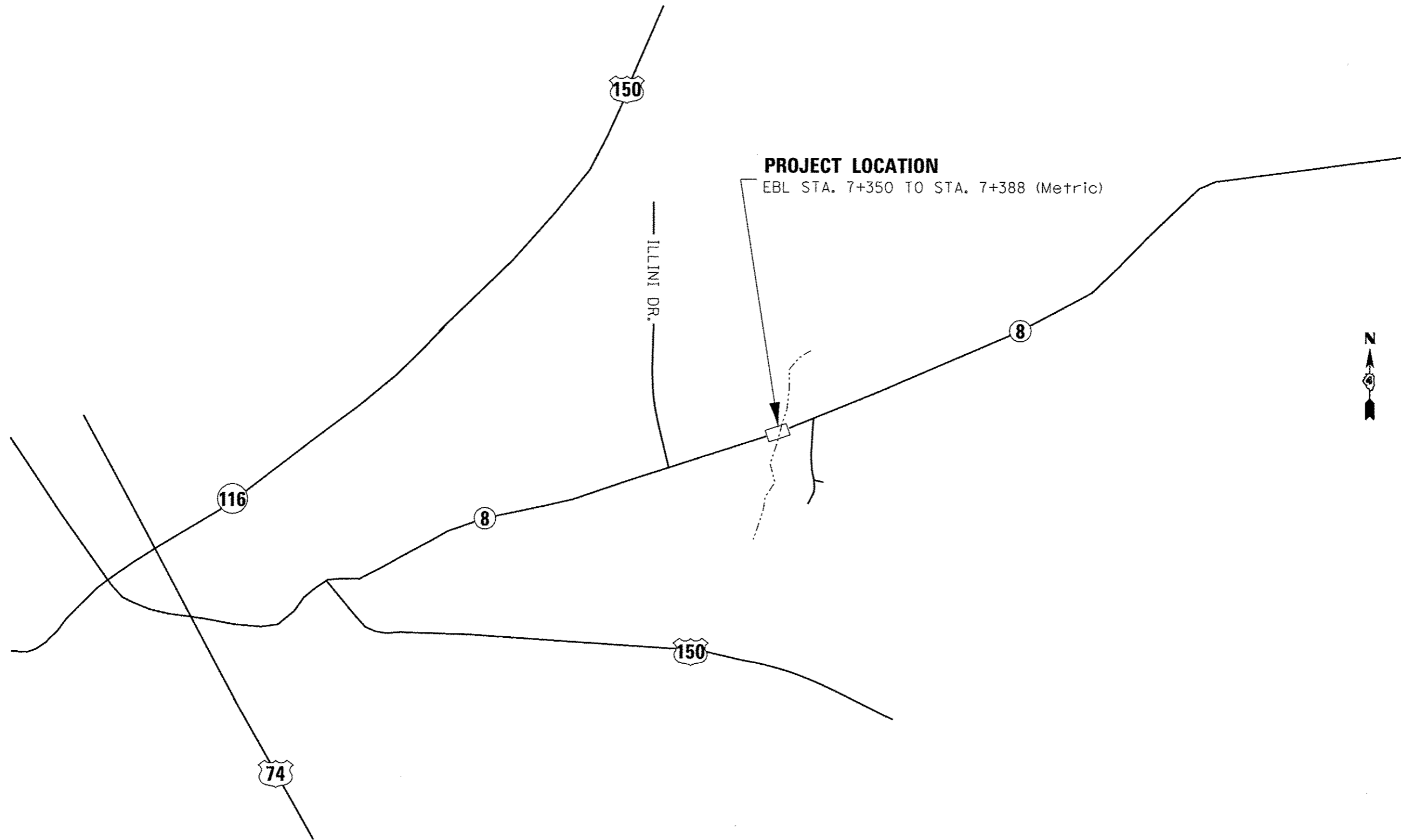
IL 8

- * 1. SEE SHEET 9 FOR SIDEWALK AND RETAINING WALL DETAIL
 2. SIDEWALK OUTSIDE THE RETAINING WALL LIMITES IS 4" THICK

LEGEND

- ① EXISTING JOINTED CONCRETE PAVEMENT 10"
- ② EXISTING SUBBASE GRANULAR MATERIAL, TYPE B 12"
- ③ EXISTING COMBINATION CONCRETE CURB AND GUTTER, TYPE B-6-24
- ④ EXISTING TIE BAR
- ⑤ EXISTING CONCRETE SIDEWALK
- ⑥ EXISTING RETAINING WALL AND SIDEWALK

FILE NAME : 68D18.dgn	USER NAME : labebrdam	DESIGNED -	REVISED -	STATE OF ILLINOIS DEPARTMENT OF TRANSPORTATION	TYPICAL SECTION			F.A.P. RTE.:	SECTION	COUNTY	TOTAL SHEETS	SHEET NO.
	PLOT SCALE : 1/8" = 10'-0"	DRAWN -	REVISED -					399	(371)	TAZEWELL	16	4
Default	PLOT DATE : 5/20/2016	CHECKED -	REVISED -		SCALE:	SHEET	OF	SHEETS	STA.	TO STA.	CONTRACT NO. 68D18	
		DATE -	REVISED -								ILLINOIS FED. AID PROJECT	



FILE NAME = 68018.dgn	USER NAME = lobabidram	DESIGNED -	REVISED -
		DRAWN -	REVISED -
		CHECKED -	REVISED -
		DATE -	REVISED -
Default	PLOT SCALE = 100.0000' / 1" =		
	PLOT DATE = 5/28/2016		

STATE OF ILLINOIS
DEPARTMENT OF TRANSPORTATION

LINE DIAGRAM	
SCALE:	SHEET OF SHEETS STA. TO STA.

F.A.P. RTE.	SECTION	COUNTY	TOTAL SHEETS	SHEET NO.
399	(37)	TAZEWELL	16	5
CONTRACT NO. 68018				
ILLINOIS FED. AID PROJECT				

Traffic Control and Protection (Special)

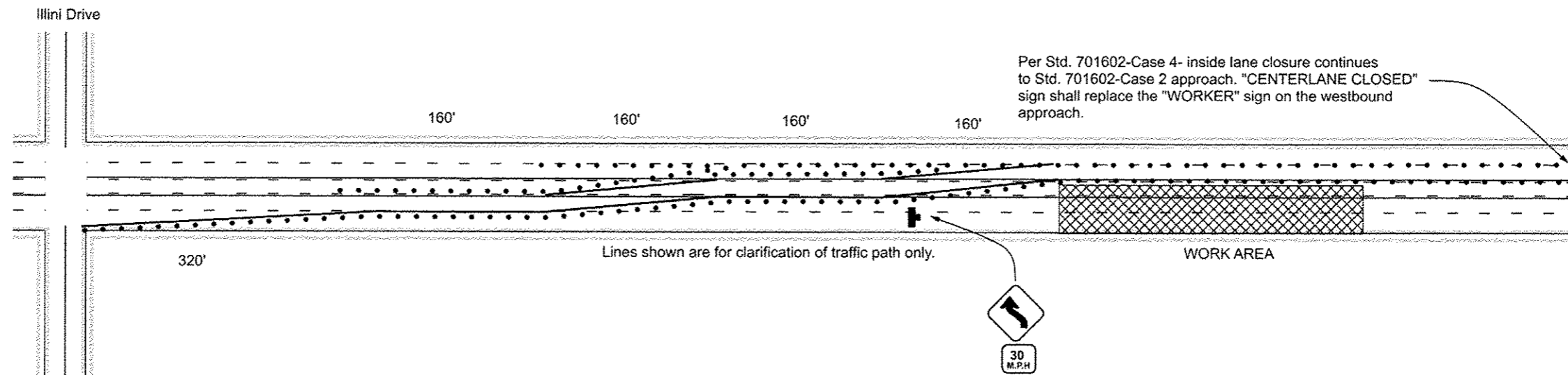
Device spacing and signage shall be as shown on Standard 701602-Case 2 and Case 4 and in addition to signage shown on this detail.

Standard 701602-Case 4 shall be used during sidewalk work.

All devices shall be removed at the end of the day- prior to dusk if cones used.

All advisory speed placards shall be 30 mph.

All work inclusive of this detail and Highway Standards listed shall be inclusive in the Traffic Control and Protection (Special) pay item.



FILE NAME = 68018.dgn	USER NAME = jebobridan	DESIGNED -	REVISED -	STATE OF ILLINOIS DEPARTMENT OF TRANSPORTATION	TRAFFIC CONTROL AND PROTECTION (SPECIAL) DETAIL	F.A.P. RTE.	SECTION	COUNTY	TOTAL SHEETS	SHEET NO.	
	PLOT SCALE = 100.0000' / in.	DRAWN -	REVISED -			399	(37)	TAZEWELL	16	7	
Default	PLOT DATE = 5/28/2016	CHECKED -	REVISED -		SCALE:	SHEET	OF	SHEETS	STA.	TO STA.	ILLINOIS FED. AID PROJECT
	DATE -	REVISED -									CONTRACT NO. 68018

Core 1				
mm/in	Inches	in/blow	mm/blow	IBV
25.4	11.0-15.0	0.4	10.16	21.88
	15-17	0.2	5.08	52.37
	17-19	0.2	5.08	52.37
	19-20.5	0.15	3.81	75.23
	20.5-22	0.17	4.318	64.26
	22-24	0.4	10.16	21.88
	24-26.5	0.50	12.7	16.52
	26.5-28.5	0.4	10.16	21.88
	28.5-32	0.7	17.78	10.82
	32-36	0.8	20.32	9.14
	36-40.5	0.9	22.86	7.88
	40.5-45.5	1	25.4	6.90
	45.5-49.5	0.8	20.32	9.14
	49.5-53	0.35	8.89	25.89
	53-59.5	0.325	8.255	28.42
	59.5-67	0.375	9.525	23.73
	67-74	0.35	8.89	25.89

Core 3				
mm/in	Inches	in/blow	mm/blow	IBV
25.4	12.5-16.5	0.4	10.16	21.88
	16.5-18.8	0.23	5.842	43.92
	18.8-21	0.22	5.588	46.45
	21-23.4	0.24	6.096	41.63
	23.4-28	0.46	11.684	18.35
	28-34	0.6	15.24	13.13
	34-38	0.40	10.16	21.88
	38-41.5	0.35	8.89	25.89
	41.5-45	0.35	8.89	25.89
	45-50	0.5	12.7	16.52
	50-54.6	1.15	29.21	5.79
	54.6-57.5	0.97	24.638	7.17
	57.5-59.8	0.46	11.684	18.35
	59.8-66	0.62	15.748	12.60
	66-73	0.7	17.78	10.82
	73-79	0.6	15.24	13.13

Core 2				
mm/in	Inches	in/blow	mm/blow	IBV
25.4	12.8-19.5	0.67	17.018	11.43
	19.5-22	0.5	12.7	16.52
	22-27	1	25.4	6.90
	27-30	1	25.4	6.90
	30-32.5	1.25	31.75	5.21
	32.5-35	0.5	12.7	16.52
	35-38.4	0.85	21.59	8.47
	38.4-41	1.3	33.02	4.96
	41-45.5	1.5	38.1	4.14
	45.5-48.5	1.5	38.1	4.14
	48.5-51.5	1.5	38.1	4.14
	51.5-54	1.25	31.75	5.21
	54-57	1	25.4	6.90
	57-61.5	1.5	38.1	4.14
	61.5-64	2.5	63.5	2.18
	64-66	1	25.4	6.90
	66-70	2	50.8	2.88
	70-74.5	2.25	57.15	2.49
	74.5-77.5	1	25.4	6.90
	77.5-79	0.75	19.05	9.92
	79-81	0.4	10.16	21.88

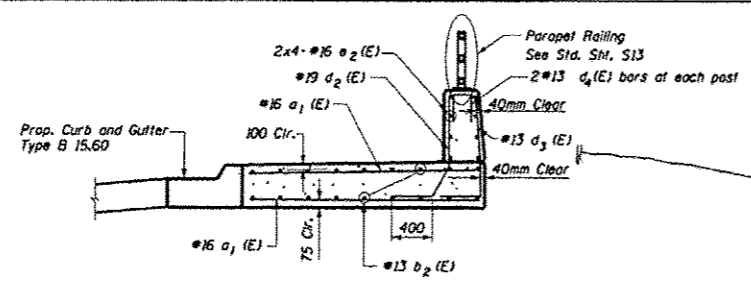
Core 4				
mm/in	Inches	in/blow	mm/blow	IBV
25.4	15.7-22.5	0.68	17.272	11.22
	22.5-27	1.5	38.1	4.14
	27-33	2	50.8	2.88
	33-37	1.33	33.782	4.82
	37-41	1	25.4	6.90
	41-48	2.35	59.69	2.35
	48-52.5	4.5	114.3	1.04
	52.5-56	1.75	44.45	3.41
	56-60	1.33	33.782	4.82
	60-64	4	101.6	1.21
	64-66.5	2.5	63.5	2.18
	66.5-71.5	1.67	42.418	3.62
	71.5-76	1.5	38.1	4.14
	76-79	1.5	38.1	4.14
	79-80.5	1.5	38.1	4.14
	80.5-82.5	2	50.8	2.88

PAVEMENT SETTLEMENT INFORMATION *					
OFFSET FROM INLET	DRIVING LANE	DRIVING LANE	PASSING LANE	BORING LOCATION DRIVING LANE	BORING LOCATION PASSING LANE
	RT EDGE	LT EDGE	LT EDGE		
FEET	INCH	INCH	INCH		
-70	0	0	0		
-65	0	0	0		
-60	0	0	0		
-55	0	0	0		
-50	0.25	0.5	0		
-45	0.75	1.25	1		
-40	1	1.5	2	CORE 1	CORE 3
-35	1	1.5	1.33		
-30	1	0.75	0.67		
-25	0.75	0.75	0		
-20	0.875	0	0		
-15	0.875	0	0		
-10	1.75	0.5	0		
-5	2.625	1.25	0	CORE 2	
0	3.25	1.5	0	INLET LOCATION	
5	4	2.5	0		
10	3.5	2.5	1		CORE 4
15	2.375	1.5	2		
20	1.5	1	1.33		
25	1.5	1	0.67		
30	1.125	0.75	0		
35	1	0.625	0		
40	0.875	0.5	0		
45	0.75	0	0		
50	0.5	0	0		
55	0	0	0		
60	0	0	0		

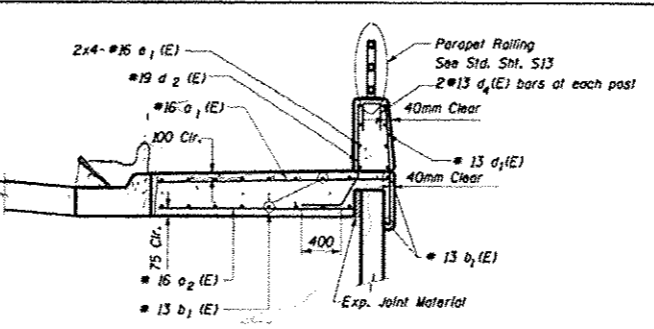
Core 1 had 1" void
Core 2 had 1.25" void
Core 3 had 1" void
Core 4 had 4" void

* TO BE VERIFIED BY THE CONTRACTOR

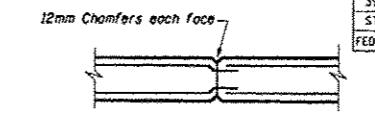
F.A.P. R.T.E.	SECTION	COUNTY	TOTAL SHEETS	SHEET NO.
399	37R-1(137-A)	TAZEWELL	16	9
STA 5+40.000		TO STA 7+663.000		
FED. ROAD DIST. NO. 4		ILLINOIS FED. AID PROJECT		SII of 522



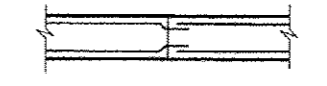
PARAPET SECTION AT CULVERT



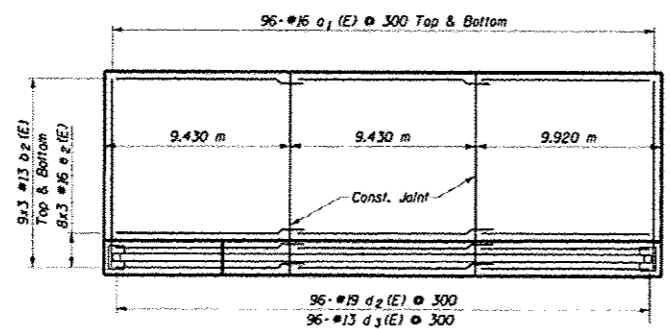
PARAPET SECTION AT WALL
Mechanically Stabilized Earth Retaining Wall H



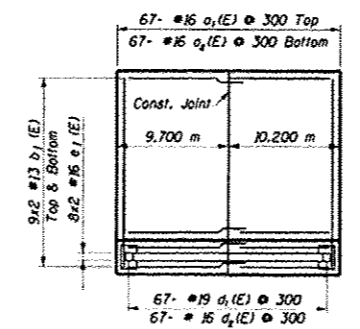
CONST. JOINT AT PARAPET



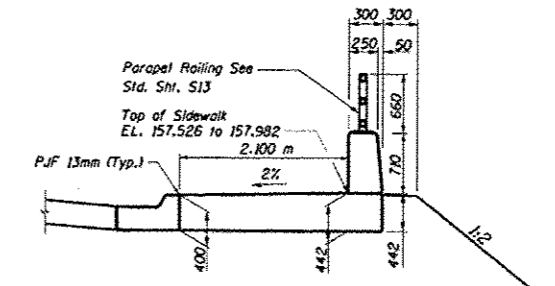
CONST. JOINT AT SIDEWALK



PLAN
Parapet Wall at Culvert
Sta. 7+338.220 TO Sta 7+367.000

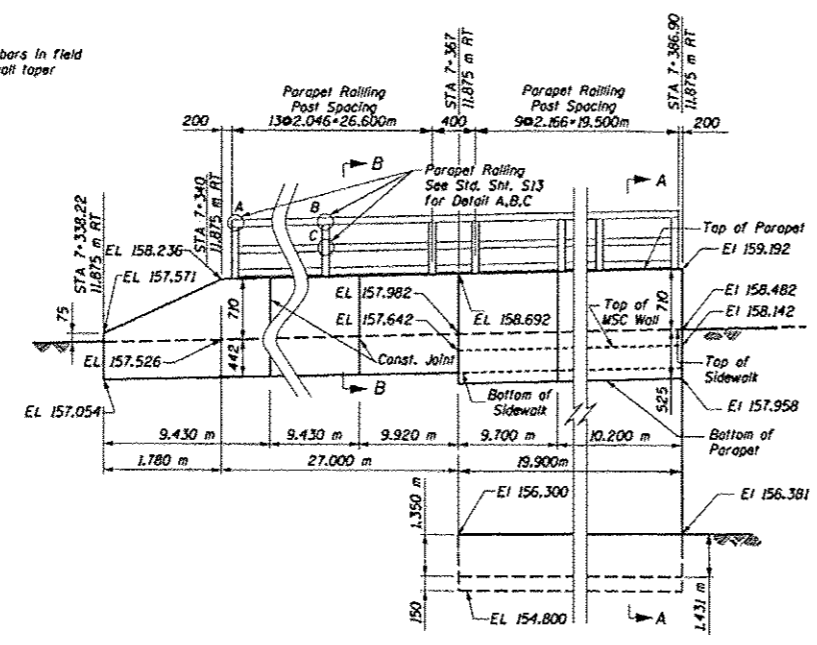


PLAN
Parapet Wall at Mechanically Stabilized Earth Retaining Wall H
Sta. 7+367.000 TO Sta 7+386.90

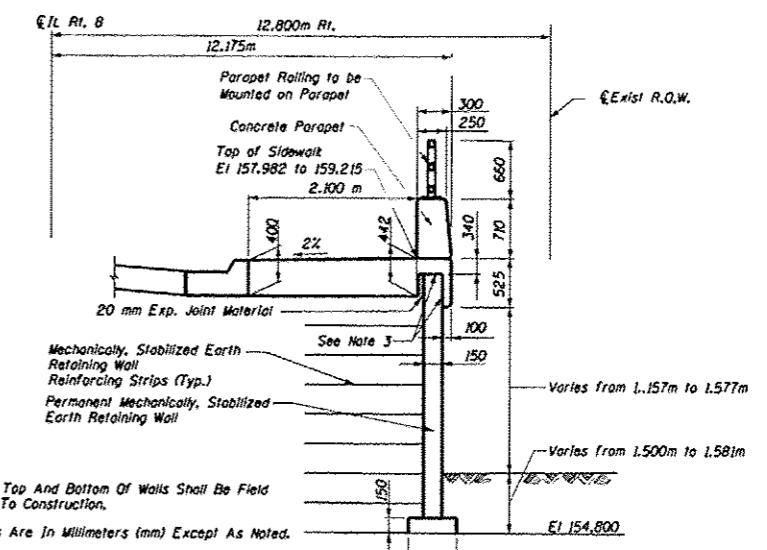


SECTION B-B (TYP.)

Notes:
Bend b1(E) bars in field to match wall taper



ELEVATION - FRONT FACE
(Parapet Wall at Culvert and Mechanically Stabilized Earth Retaining Wall H) Right Side (South)



SECTION A-A (TYP.)

- Notes:
- All Grades At Top And Bottom Of Walls Shall Be Field Verified Prior To Construction.
 - All Dimensions Are In Millimeters (mm) Except As Noted.
 - Positive Bond Breaker Shall Be Provided Between Cast-In-Place Concrete And Precast Concrete Panel.
 - Bars Indicated Thus 9x5-#13 Indicates 9 Lines Of Bars With 5 Lines Per Line.
 - Reinforced Sidewalk will be paid for as Concrete Structure.

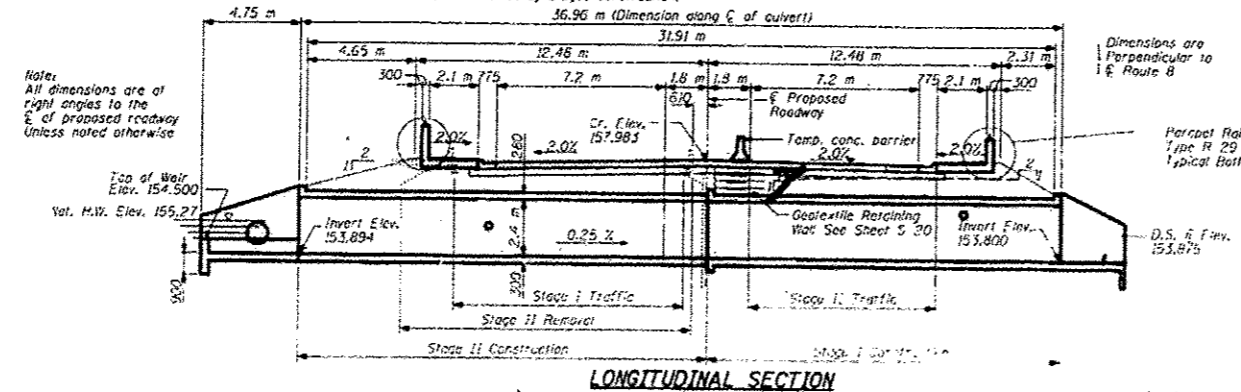
REVISIONS		ILLINOIS DEPARTMENT OF TRANSPORTATION ILLINOIS ROUTE B - SEGMENT 1 PARAPET WALL AT CULVERT AND WALL H
NAME	DATE	
		SCALE: NTS DESIGN BY: AH DRAWN BY: CU DATE: AUGUST, 2002 CHECKED BY: JMW/JH

Engineers/Architects/Planners/Construction Managers
200 W. Monroe St. Chicago, IL 60606-5015

Batch Mark: BU #107, Sta. 7+375.842, Offset 5.384 LT, El. 157.631.
Description: Square On Top Of N.E. Wingwall Of Bridge 600' +/- West of Oakwood Road On Route 8.
Existing Structure: S.N. 090-0028, single span 13.1 m bk. to bk. abutments, 9.45 m c. to c. Steel rolled beam superstructure w/ concrete deck on wood plank and concrete abutments. Built as FA 9 II, Rte. 8, Sect. 37A in 1932. The contractor shall remove the existing structure as required and replace it with a two-barrel, cast-in-place box culvert. Traffic shall be maintained by staged construction.

Salvage: None when stage 1 is completed.

F.A.P. RTE.	SECTION	COUNTY	TOTAL SHEETS NO.	SHEET NO.
399	37A-145F-A1	TAZEWELL	446	246
STA 5+410.000 TO STA 7+663.000			ILLINOIS FED. AID PROJECT	
FED. ROAD DIST. NO. 4			ILLINOIS FED. AID PROJECT	



LOADING MS18
 Allow 2.4 kN/m² for future wearing surface

DESIGN SPECIFICATIONS
 1996 AASHTO AND 1997, 1998, 1999 and 2000 Interims

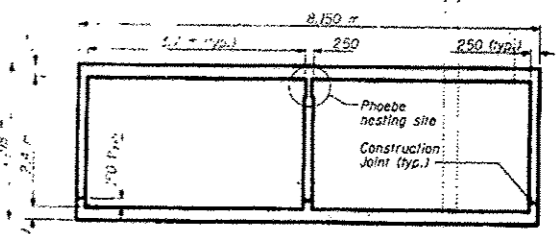
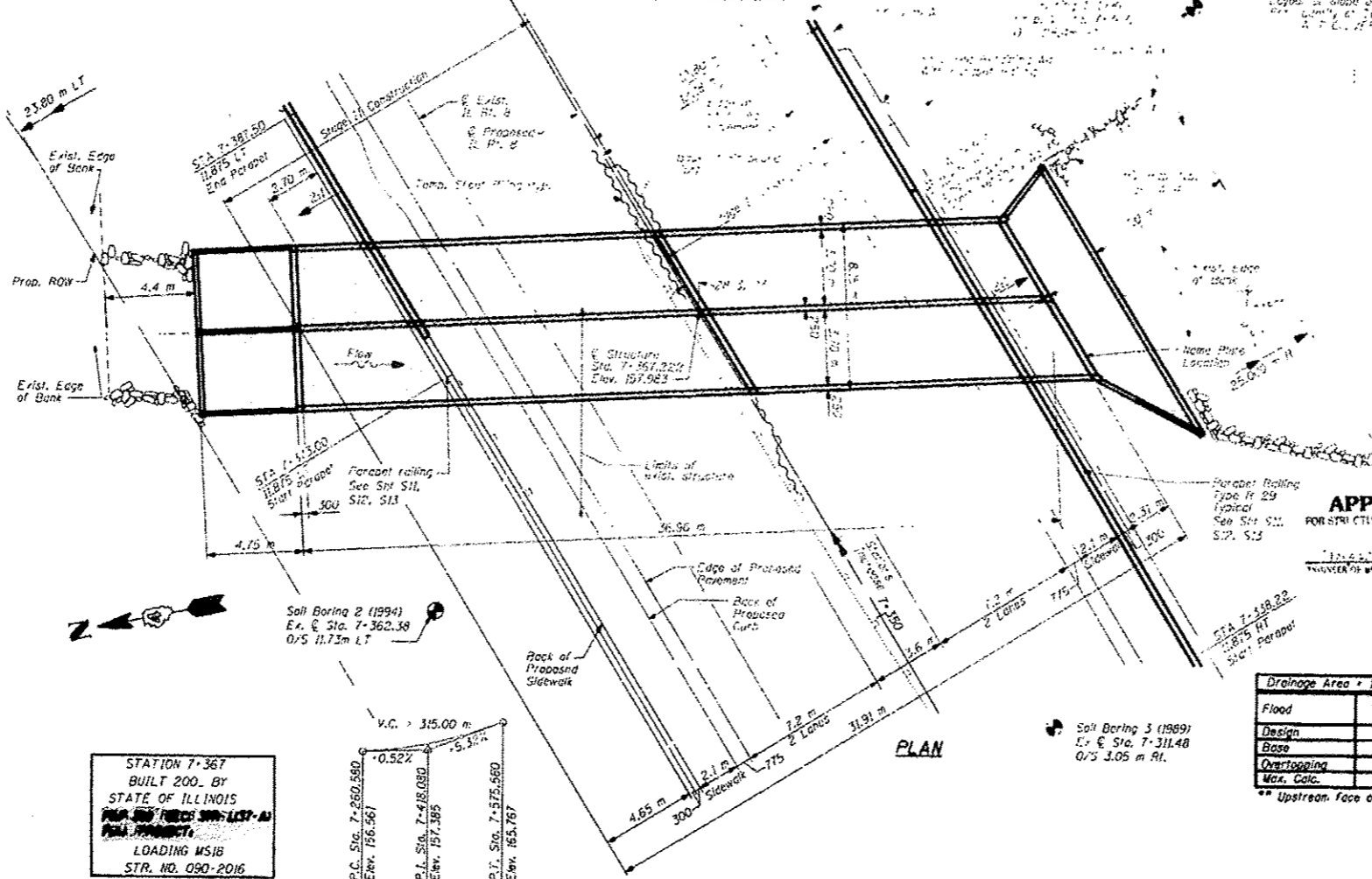
DESIGN STRESSES
FIELD UNITS
 f_c = 24 MPa
 f_y = 470 MPa reinforcement

TOTAL BILL OF MATERIAL

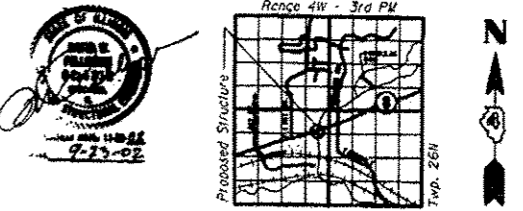
ITEM	UNIT	TOTAL
Removal of Existing Structures	Each	1
Concrete Box Culverts	m ³	282
Reinforcement Bars	kg	27,300
Bar Splicers	Each	127
Parapet Railing	m	43.5
Temporary Sheet Piling	m ²	286
Name Plates	Each	1
Gas-tight Retaining Wall	m ²	15
Filter Fabric for use with Rip Rap	m ²	183
Stone Rip Rap Class 2-4	m ³	183

GENERAL NOTES

Reinforcement bars shall conform to the requirements of AASHTO M-318, M-424 or M-534 Grade 420 E-shaped bars shall be chamfered 20 mm.
 For backfilling and embankment, see Standard Specifications.
 The contractor shall excavate behind the existing abutments before removal of existing checks.
 All dimensions are in millimeters (mm) except as noted.
 Saw cut Abutment at Stage Removal Line prior to any removal of the existing superstructure. Cost included with Removal of Existing Structures.
 Layout of slope protection system may vary in the field to suit ground conditions as directed by the Engineer.
 Use quality of temporary concrete barrier. See Project Plans.
 A.T.C. 197 & 198, 199, 200, 201, 202, 203, 204, 205, 206, 207, 208, 209, 210, 211, 212, 213, 214, 215, 216, 217, 218, 219, 220, 221, 222, 223, 224, 225, 226, 227, 228, 229, 230, 231, 232, 233, 234, 235, 236, 237, 238, 239, 240, 241, 242, 243, 244, 245, 246, 247, 248, 249, 250, 251, 252, 253, 254, 255, 256, 257, 258, 259, 260, 261, 262, 263, 264, 265, 266, 267, 268, 269, 270, 271, 272, 273, 274, 275, 276, 277, 278, 279, 280, 281, 282, 283, 284, 285, 286, 287, 288, 289, 290, 291, 292, 293, 294, 295, 296, 297, 298, 299, 300, 301, 302, 303, 304, 305, 306, 307, 308, 309, 310, 311, 312, 313, 314, 315, 316, 317, 318, 319, 320, 321, 322, 323, 324, 325, 326, 327, 328, 329, 330, 331, 332, 333, 334, 335, 336, 337, 338, 339, 340, 341, 342, 343, 344, 345, 346, 347, 348, 349, 350, 351, 352, 353, 354, 355, 356, 357, 358, 359, 360, 361, 362, 363, 364, 365, 366, 367, 368, 369, 370, 371, 372, 373, 374, 375, 376, 377, 378, 379, 380, 381, 382, 383, 384, 385, 386, 387, 388, 389, 390, 391, 392, 393, 394, 395, 396, 397, 398, 399, 400, 401, 402, 403, 404, 405, 406, 407, 408, 409, 410, 411, 412, 413, 414, 415, 416, 417, 418, 419, 420, 421, 422, 423, 424, 425, 426, 427, 428, 429, 430, 431, 432, 433, 434, 435, 436, 437, 438, 439, 440, 441, 442, 443, 444, 445, 446, 447, 448, 449, 450, 451, 452, 453, 454, 455, 456, 457, 458, 459, 460, 461, 462, 463, 464, 465, 466, 467, 468, 469, 470, 471, 472, 473, 474, 475, 476, 477, 478, 479, 480, 481, 482, 483, 484, 485, 486, 487, 488, 489, 490, 491, 492, 493, 494, 495, 496, 497, 498, 499, 500, 501, 502, 503, 504, 505, 506, 507, 508, 509, 510, 511, 512, 513, 514, 515, 516, 517, 518, 519, 520, 521, 522, 523, 524, 525, 526, 527, 528, 529, 530, 531, 532, 533, 534, 535, 536, 537, 538, 539, 540, 541, 542, 543, 544, 545, 546, 547, 548, 549, 550, 551, 552, 553, 554, 555, 556, 557, 558, 559, 560, 561, 562, 563, 564, 565, 566, 567, 568, 569, 570, 571, 572, 573, 574, 575, 576, 577, 578, 579, 580, 581, 582, 583, 584, 585, 586, 587, 588, 589, 590, 591, 592, 593, 594, 595, 596, 597, 598, 599, 600, 601, 602, 603, 604, 605, 606, 607, 608, 609, 610, 611, 612, 613, 614, 615, 616, 617, 618, 619, 620, 621, 622, 623, 624, 625, 626, 627, 628, 629, 630, 631, 632, 633, 634, 635, 636, 637, 638, 639, 640, 641, 642, 643, 644, 645, 646, 647, 648, 649, 650, 651, 652, 653, 654, 655, 656, 657, 658, 659, 660, 661, 662, 663, 664, 665, 666, 667, 668, 669, 670, 671, 672, 673, 674, 675, 676, 677, 678, 679, 680, 681, 682, 683, 684, 685, 686, 687, 688, 689, 690, 691, 692, 693, 694, 695, 696, 697, 698, 699, 700, 701, 702, 703, 704, 705, 706, 707, 708, 709, 710, 711, 712, 713, 714, 715, 716, 717, 718, 719, 720, 721, 722, 723, 724, 725, 726, 727, 728, 729, 730, 731, 732, 733, 734, 735, 736, 737, 738, 739, 740, 741, 742, 743, 744, 745, 746, 747, 748, 749, 750, 751, 752, 753, 754, 755, 756, 757, 758, 759, 760, 761, 762, 763, 764, 765, 766, 767, 768, 769, 770, 771, 772, 773, 774, 775, 776, 777, 778, 779, 780, 781, 782, 783, 784, 785, 786, 787, 788, 789, 790, 791, 792, 793, 794, 795, 796, 797, 798, 799, 800, 801, 802, 803, 804, 805, 806, 807, 808, 809, 810, 811, 812, 813, 814, 815, 816, 817, 818, 819, 820, 821, 822, 823, 824, 825, 826, 827, 828, 829, 830, 831, 832, 833, 834, 835, 836, 837, 838, 839, 840, 841, 842, 843, 844, 845, 846, 847, 848, 849, 850, 851, 852, 853, 854, 855, 856, 857, 858, 859, 860, 861, 862, 863, 864, 865, 866, 867, 868, 869, 870, 871, 872, 873, 874, 875, 876, 877, 878, 879, 880, 881, 882, 883, 884, 885, 886, 887, 888, 889, 890, 891, 892, 893, 894, 895, 896, 897, 898, 899, 900, 901, 902, 903, 904, 905, 906, 907, 908, 909, 910, 911, 912, 913, 914, 915, 916, 917, 918, 919, 920, 921, 922, 923, 924, 925, 926, 927, 928, 929, 930, 931, 932, 933, 934, 935, 936, 937, 938, 939, 940, 941, 942, 943, 944, 945, 946, 947, 948, 949, 950, 951, 952, 953, 954, 955, 956, 957, 958, 959, 960, 961, 962, 963, 964, 965, 966, 967, 968, 969, 970, 971, 972, 973, 974, 975, 976, 977, 978, 979, 980, 981, 982, 983, 984, 985, 986, 987, 988, 989, 990, 991, 992, 993, 994, 995, 996, 997, 998, 999, 1000.



SECTION THRU CAST-IN-PLACE BARREL
 (AT EXISTING BRIDGE LOOKING UPSTREAM)



LOCATION SKETCH
 Note: All dimensions are in millimeters unless otherwise noted.

APPROVED
 FOR STRUCTURAL ADEQUACY ONLY
 ENGINEER OF RECORD AND STRUCTURE

WATERWAY INFORMATION

Drainage Area = 14.35 km² Low Grade Elev. = 157.26 Sta. 1+554.5 Max. Rec. H.W.E. N.A. m

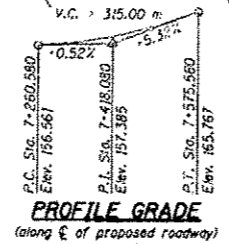
Flood	Freq. yr.	Q m ³ /s	Opening m ²		Head - m		Headwater EL. m	
			Exist.	Prop.	Exist.	Prop.	Exist.	Prop.
Design	50	17.3	10.9	11.3	0.06	0.15	155.33	155.33
Base	100	19.5	11.4	11.8	0.09	0.16	155.42	155.42
Overtopping								
Max. Calc.	500	2.40	12.6	13.4	0.09	0.24	155.54	155.69

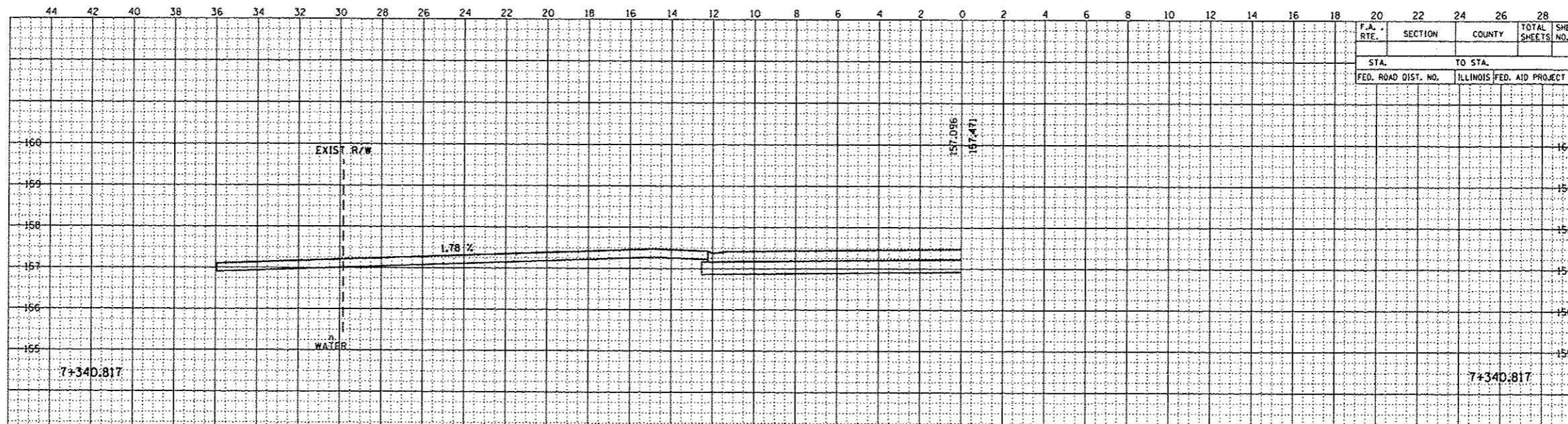
** Upstream face of culvert

ILLINOIS DEPARTMENT OF TRANSPORTATION
 ILLINOIS ROUTE 8 - SEGMENT 1
 CULVERT - GENERAL PLAN
 STRUCTURE NO. 090-2016

SCALE: N.T.S. DRAWN BY: APH
 DATE: AUGUST, 2002 CHECKED BY: RJL

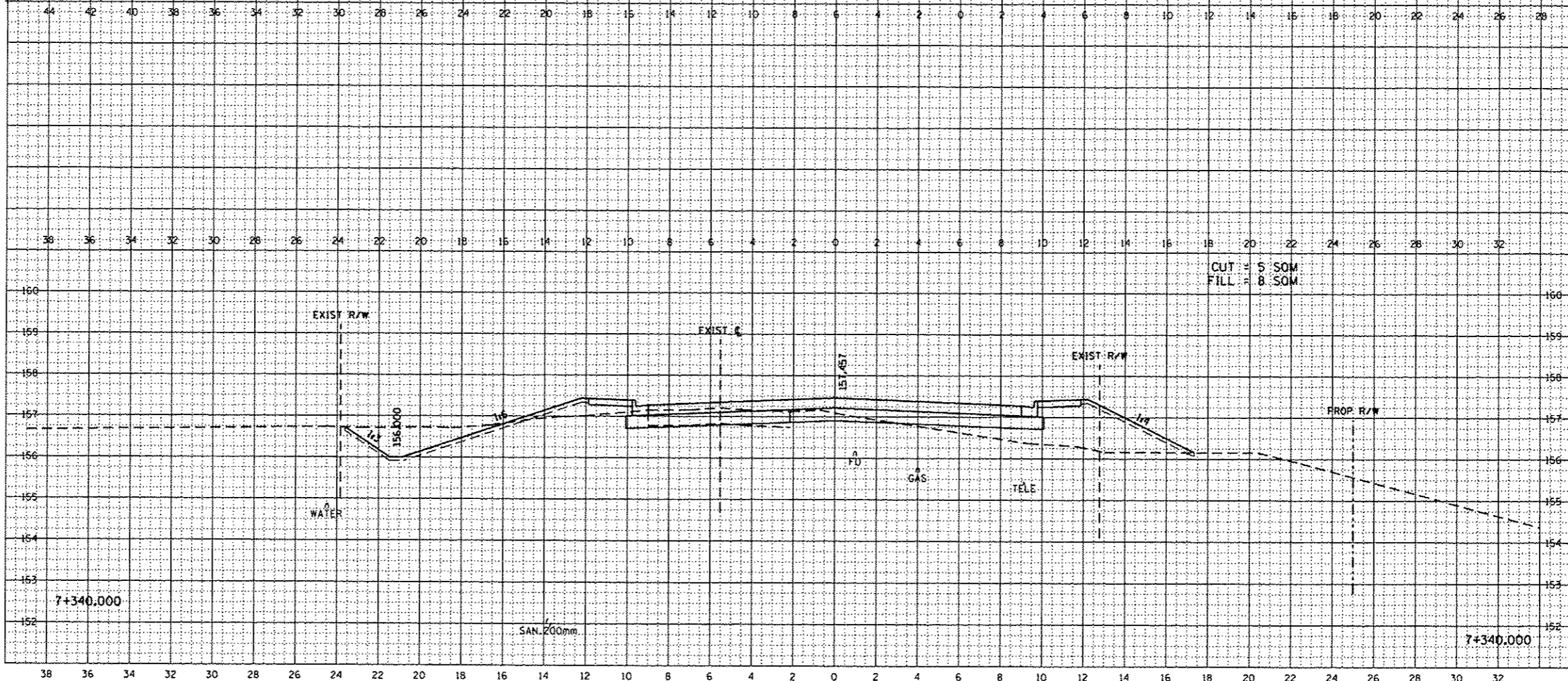
STATION 7+367
 BUILT 2002 BY
 STATE OF ILLINOIS
 ROAD DISTRICT 399-145F-A1
 PROJECT NO. 090-2016
 LOADING MS18
 STR. NO. 090-2016
NAME PLATE
 See Std. 515001





DATE	
BY	
DESIGNED	
DRAWN	
CHECKED	
DATE	
PROJECT	
PLANT	
NOTE BOOK	
AREA CHECKED	

F.A. RTE.	SECTION	COUNTY	TOTAL SHEETS	SHEET NO.
STA.	TO STA.			
FED. ROAD DIST. NO.	ILLINOIS FED. AID PROJECT			



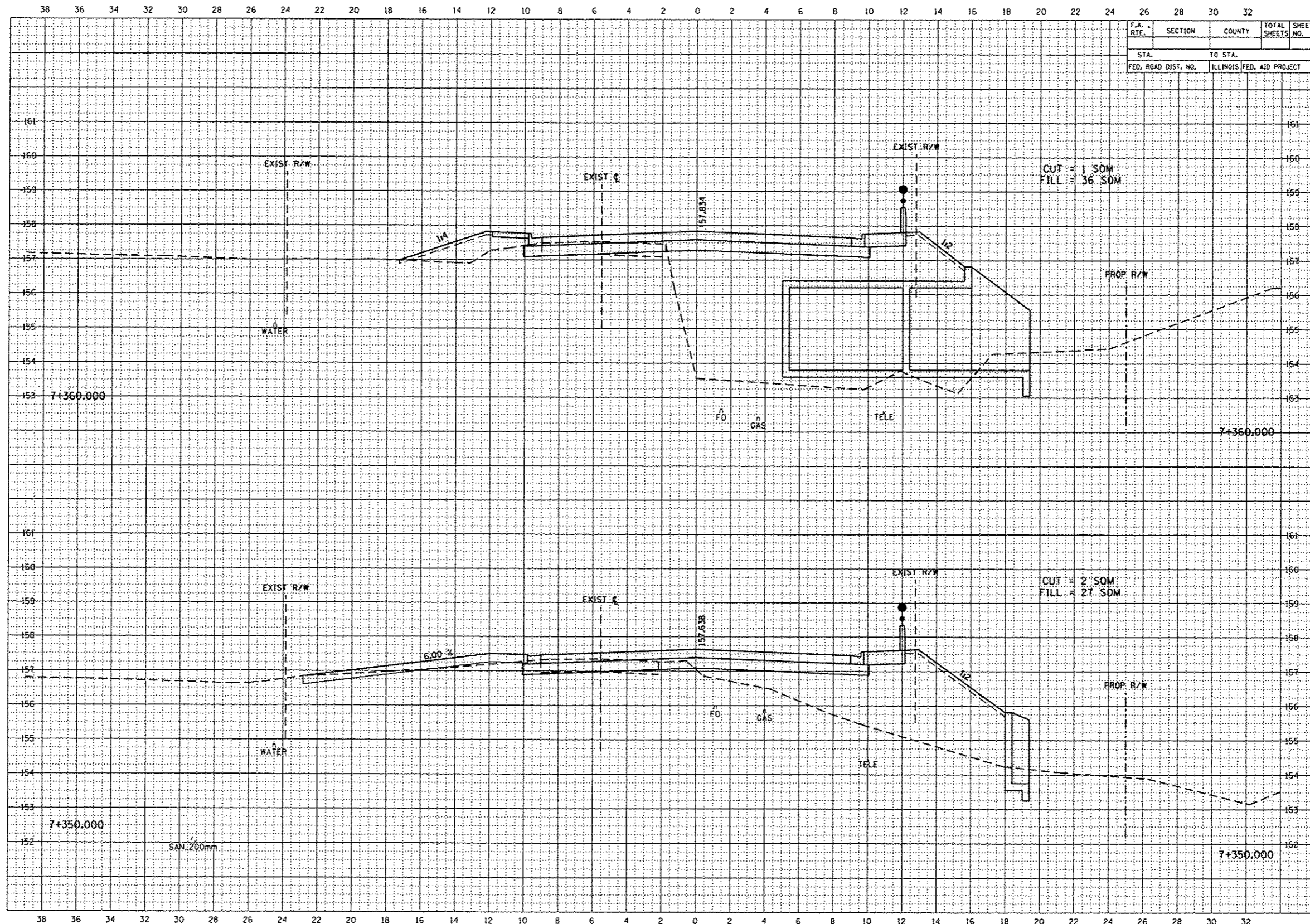
DATE	
BY	
DESIGNED	
DRAWN	
CHECKED	
DATE	
PROJECT	
PLANT	
NOTE BOOK	
AREA CHECKED	

FILE NAME = 68018.dgn	USER NAME = lobobidiam	DESIGNED -	REVISED -
Default		DRAWN -	REVISED -
		CHECKED -	REVISED -
		DATE -	REVISED -

**STATE OF ILLINOIS
DEPARTMENT OF TRANSPORTATION**

EXISTING CROSS SECTION FOR INFORMATION ONLY			
SCALE:	SHEET	OF SHEETS	STA. TO STA.

F.A.P. RTE.	SECTION	COUNTY	TOTAL SHEETS	SHEET NO.
399	(37)I	TAZEWELL	16	13
ILLINOIS FED. AID PROJECT				
CONTRACT NO. 68018				



DATE	
BY	
DESIGNED	
DRAWN	
CHECKED	
DATE	

DATE	
BY	
DESIGNED	
DRAWN	
CHECKED	
DATE	

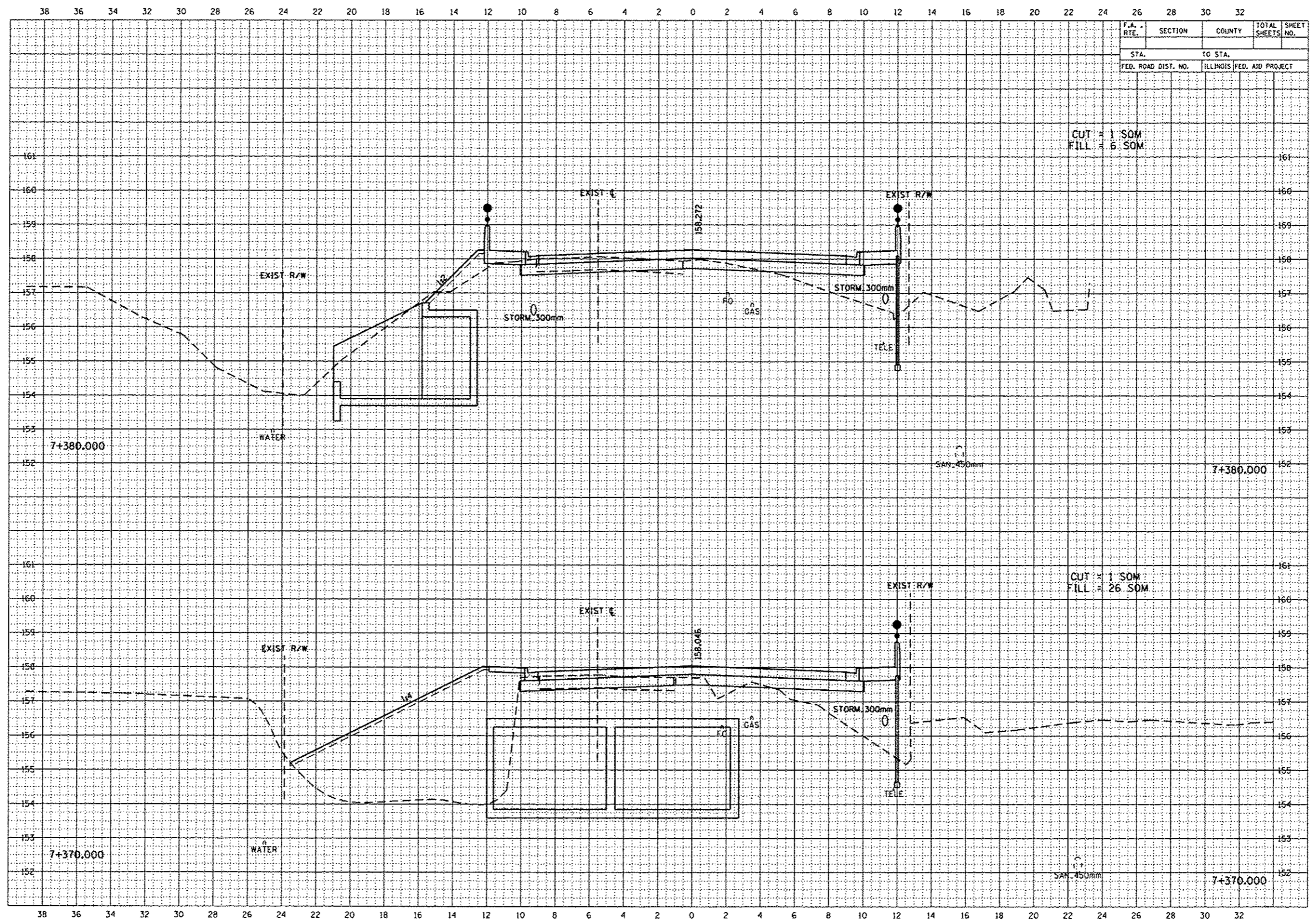
FILE NAME : 68018.dgn	USER NAME : lobobidiam	DESIGNED -	REVISED -
Default		DRAWN -	REVISED -
		CHECKED -	REVISED -
		DATE -	REVISED -

**STATE OF ILLINOIS
DEPARTMENT OF TRANSPORTATION**

**EXISTING CROSS SECTION
FOR INFORMATION ONLY**

SCALE: SHEET OF SHEETS STA. TO STA.

F.A.P. RTE.	SECTION	COUNTY	TOTAL SHEETS	SHEET NO.
399	(37)	TAZEWELL	16	14
CONTRACT NO. 68D18				
ILLINOIS FED. AID PROJECT				



DATE	
BY	
DESIGNED	
DRAWN	
CHECKED	
DATE	
BY	
DESIGNED	
DRAWN	
CHECKED	

DATE	
BY	
DESIGNED	
DRAWN	
CHECKED	
DATE	
BY	
DESIGNED	
DRAWN	
CHECKED	

F.A.P. RTE.	SECTION	COUNTY	TOTAL SHEETS	SHEET NO.
STA. TO STA.				
FED. ROAD DIST. NO.		ILLINOIS	FED. AID PROJECT	

CUT = 1 SOM
FILL = 6 SOM

CUT = 1 SOM
FILL = 26 SOM

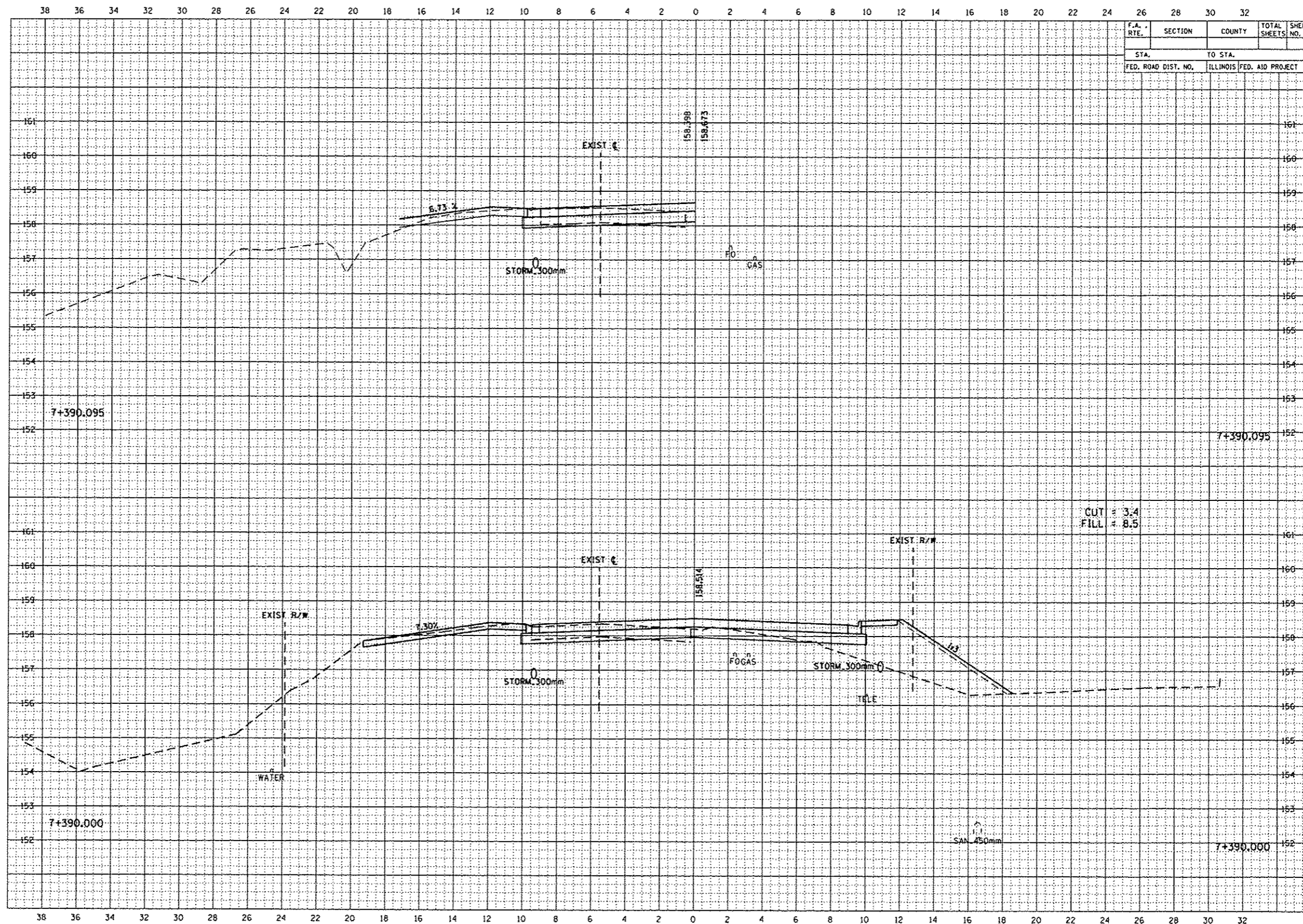
STATE OF ILLINOIS
DEPARTMENT OF TRANSPORTATION

EXISTING CROSS SECTION
FOR INFORMATION ONLY

FILE NAME = 68D18.dgn	USER NAME = tebabitdian	DESIGNED -	REVISED -
Default		DRAWN -	REVISED -
		CHECKED -	REVISED -
		DATE -	REVISED -

SCALE:	SHEET	OF	SHEETS	STA.	TO	STA.
--------	-------	----	--------	------	----	------

F.A.P. RTE.	SECTION	COUNTY	TOTAL SHEETS	SHEET NO.
399	(371)	TAZEWELL	16	15
				CONTRACT NO. 68D18
ILLINOIS FED. AID PROJECT				



DATE	
BY	
DESIGNED	
DRAWN	
CHECKED	
DATE	

DATE	
BY	
DESIGNED	
DRAWN	
CHECKED	
DATE	

F.A. RTE.	SECTION	COUNTY	TOTAL SHEETS	SHEET NO.
STA.	TO STA.			
FED. ROAD DIST. NO.	ILLINOIS FED. AID PROJECT			

STATE OF ILLINOIS
DEPARTMENT OF TRANSPORTATION

EXISTING CROSS SECTION
FOR INFORMATION ONLY

F.A.P. RTE.	SECTION	COUNTY	TOTAL SHEETS	SHEET NO.
399	(371)	TAZEWELL	16	16
CONTRACT NO. 68018				
ILLINOIS FED. AID PROJECT				

FILE NAME = 66018.dgn	USER NAME = Jobebidism	DESIGNED -	REVISED -
Default		DRAWN -	REVISED -
		CHECKED -	REVISED -
		DATE -	REVISED -

SCALE: SHEET OF SHEETS STA. TO STA.