

PLANS FOR PROPOSED

VILLAGE OF SHILOH

LEBANON AVE. PEDESTRIAN FACILITY

SECTION 15-00018-00-SW

PROJECT NO. TE-00D8 (212)

JOB NO. C-98-311-15

ST. CLAIR COUNTY, IL

TAP FUNDS

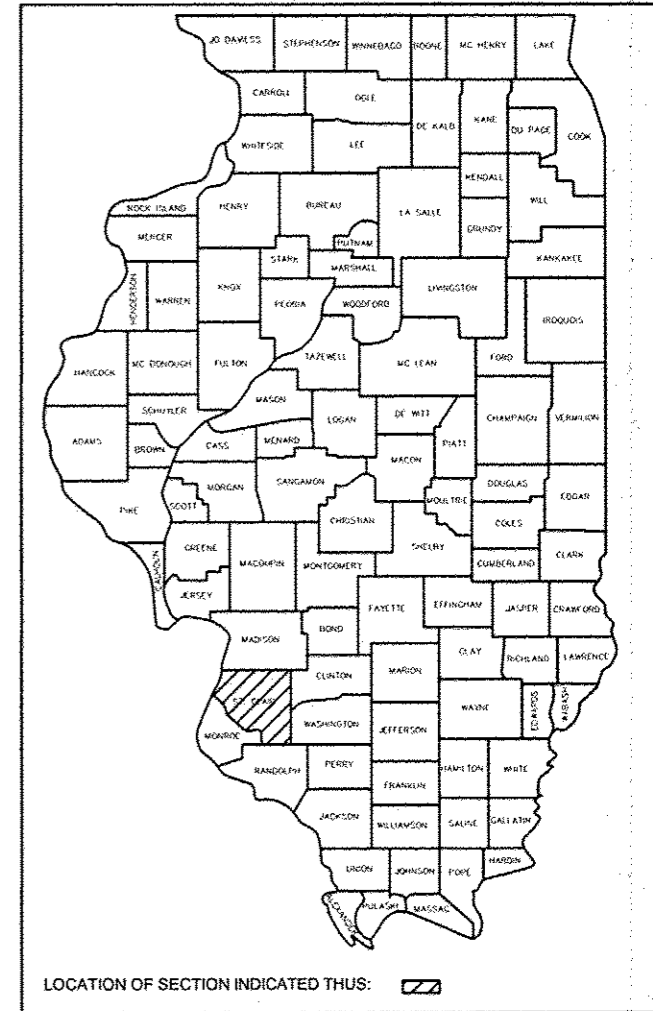
F.A.U. RTE.	SECTION	COUNTY	TOTAL SHEETS	SHEET NO.
0200	15-00018-00-SW	ST. CLAIR	12	01
FEDERAL AID PROJECT			CONTRACT NO. 07830	

INDEX OF SHEETS

- 01 COVER SHEET
- 02 GENERAL NOTES
- 03 SUMMARY OF QUANTITIES
- 04 TYPICAL SECTIONS
- 05 SCHEDULE OF QUANTITIES
- 06-07 PLAN AND PROFILES
- 08 DETAILS AND ENTRANCE SCHEDULE
- 09-12 CROSS SECTIONS

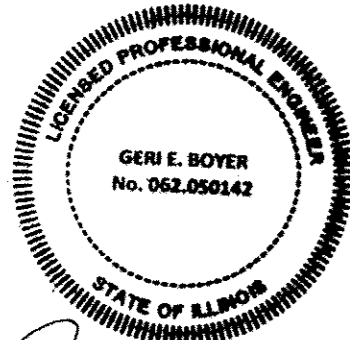
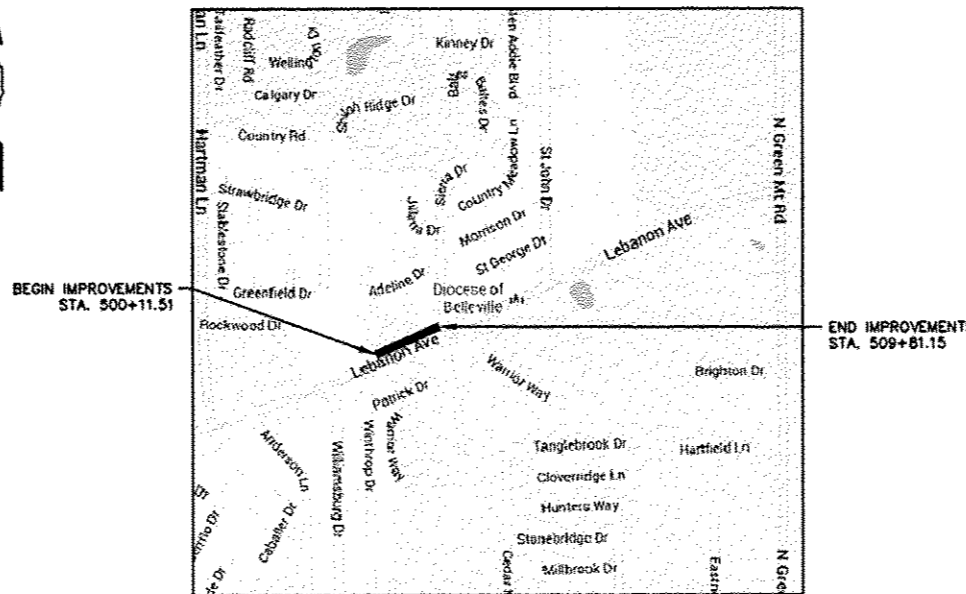
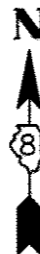
STANDARDS

- 000001-06
- 001006
- 280001-07
- 424011-02
- 442201-03
- 602301-04
- 602306-03
- 602601-04
- 602701-02
- 604006-05
- 604036-03
- 606001-06
- 701006-05
- 701011-04
- 701502-06
- 701901-05
- 814001-03



SCALES:

- PLAN & PROFILE 1 INCH = 20 FEET
1 INCH = 5 FEET VERTICAL
- CROSS SECTIONS 1 INCH = 10 FEET HORIZONTAL
1 INCH = 5 FEET VERTICAL



Geri E. Boyer
 GERI E. BOYER
 LICENSE NO. 062-050142
 DATE 7/14/16
 EXPIRES: 11-30-2017

GRAPHIC SCALES TO BE USED ARE SHOWN ACCORDINGLY ON EACH PLAN SHEET

(J.U.L.I.E.)
 JOINT UTILITY LOCATION INFORMATION FOR
 EXCAVATION 1-800-892-0123

LENGTH OF PROJECT
 TOTAL NET LENGTH = 969.64' (0.184 MILES)

FUNCTIONAL CLASSIFICATION: ARTERIAL
 DESIGN SPEED: 45 MPH
 CURRENT YEAR (2013) ADT: 12,400

STATE OF ILLINOIS
 DEPARTMENT OF TRANSPORTATION
 DIVISION OF HIGHWAYS

APPROVED July 14 20 16
James A. Chern II
 VILLAGE OF SHILOH, MAYOR

PASSED 7/15 20 16
James A. Chern II
 DISTRICT 8 ENGINEER OF LOCAL ROADS & STREETS

RELEASING FOR BID
 BASED ON LIMITED
 REVIEW 7/15 20 16
Jeffrey Z. Klein
 REGION 5 ENGINEER

PRINTED BY AUTHORITY OF THE STATE OF ILLINOIS



208 East Main Street, Suite 100
 Belleville, Illinois 62220
 618.233.5877 phone
 618.233.5977 fax
 www.kaskaskiaeng.com

PROFESSIONAL REGISTRATIONS
 Illinois Professional Design Firm
 Professional Engineering Group

LICENSE NO.
 184.004773
 20-5080586

GENERAL NOTES

1. THE ENGINEER AND OWNER DO NOT WARRANT THAT ALL UTILITIES HAVE BEEN ILLUSTRATED ON THESE DOCUMENTS. THE CONTRACTOR IS SOLELY RESPONSIBLE FOR CONTACTING J.U.L.I.E. FOR FIELD VERIFICATION OF ALL UTILITIES ON THE SITE PRIOR TO COMMENCEMENT OF CONSTRUCTION. IF CONTRACTOR DETERMINES THAT CONFIRMED OR DISCOVERED UTILITIES LOCATED WOULD SIGNIFICANTLY AFFECT THE FUNCTION, COST, OR PERFORMANCE OF THE PROJECT, THE CONTRACTOR SHALL IMMEDIATELY CONTACT THE ENGINEER FOR CLARIFICATION AND PROJECT DIRECTION.
2. IT IS NOT WARRANTED THAT THESE DRAWINGS CONTAIN COMPLETE INFORMATION REGARDING EASEMENTS, RESERVATIONS, RESTRICTIONS, RIGHT-OF-WAYS, BUILDING LINE SETBACKS, AND OTHER ENCUMBRANCES. FOR COMPLETE INFORMATION, A TITLE OPINION OR COMMITMENT FOR TITLE INSURANCE SHOULD BE OBTAINED AND THOROUGHLY REVIEWED.
3. ALL WORK, INSTALLATION, PROCEDURES, MATERIALS, AND TESTING ASSOCIATED WITH THIS PROJECT SHALL CONFORM TO THE IDOT STANDARD SPECIFICATIONS FOR ROAD AND BRIDGE CONSTRUCTION, (ADOPTED APRIL 1, 2016); AND THE SUPPLEMENTAL SPECIFICATIONS AND RECURRING SPECIAL PROVISIONS LATEST EDITION (BOTH OF WHICH WILL BE HEREINAFTER REFERRED TO IN THESE DOCUMENTS AS THE STANDARD SPECIFICATIONS (HIGHWAY)).
4. ALL WORK, INSTALLATION, PROCEDURES, MATERIALS, AND TESTING FOR EROSION AND SEDIMENTATION CONTROL ASSOCIATED WITH THIS PROJECT SHALL CONFORM TO THE ILLINOIS NRCS ILLINOIS URBAN MANUAL, 2010 EDITION AND THE STANDARD SPECIFICATIONS FOR ROAD AND BRIDGE CONSTRUCTION.
5. ALL WORK, INSTALLATION, PROCEDURES, AND MATERIALS ASSOCIATED WITH THIS PROJECT SHALL CONFORM TO THE UNITED STATES AMERICANS WITH DISABILITIES ACT.
6. ALL WORK, INSTALLATION, PROCEDURES, MATERIALS, TESTING, AND INSPECTION SHALL CONFORM TO THE STATE, MUNICIPAL, AND LOCAL UNITS OF GOVERNMENT HAVING JURISDICTION OVER THIS PROJECT.
7. IT IS THE CONTRACTOR'S RESPONSIBILITY TO ENSURE THAT ALL EROSION AND DISPLACED SEDIMENT DOES NOT MIGRATE OFF SITE. IF UNEXPECTED EROSION OR SEDIMENTATION OCCURS, OR IF THE EROSION STRUCTURES BECOME DAMAGED, THE CONTRACTOR SHALL PROVIDE SUFFICIENT MEASURES TO REPAIR, REPLACE, OR INSTALL EROSION CONTROL STRUCTURES TO ENSURE OFF-SITE DAMAGE DOES NOT OCCUR. ANY SEDIMENT OR EROSION DAMAGE WHICH OCCURS OFF-SITE SHALL BE REPAIRED BY THE CONTRACTOR AT HIS EXPENSE. THIS WORK SHALL BE INCLUDED IN THE CONTRACT PRICE AND NO ADDITIONAL COMPENSATION WILL BE ALLOWED.
8. THE CONTRACTOR SHALL RESTRICT THE AMOUNT OF LAND AREA GRADED AT ANY ONE TIME TO A MINIMUM. IT IS RECOMMENDED DURING AND AFTER GRADING, THAT A TEMPORARY VEGETATIVE COVER BE ESTABLISHED TO PROTECT THE BARE SOIL SURFACE. THIS WORK SHALL BE INCLUDED IN THE CONTRACT PRICE FOR SEEDING AND NO ADDITIONAL COMPENSATION WILL BE ALLOWED.
9. AN NPDES PERMIT IS NOT REQUIRED.
10. THE FOLLOWING ITEM AND APPROXIMATE QUANTITY ARE INCLUDED IN THE "SCHEDULE OF PRICES" IN ORDER TO ESTABLISH A UNIT COST FOR WORK WHICH MAY BE REQUIRED TO CONSTRUCT THIS SECTION. THE ACTUAL QUANTITY OF EACH ITEM SHALL BE DETERMINED BY THE ENGINEER IN THE FIELD. QUANTITY HAS BEEN DETERMINED USING AN APPLICATION RATE OF 2 TONS/CU YD.

AGGREGATE FOR TEMPORARY ACCESS	84 TON
--------------------------------	--------
11. THE CONTRACTOR SHALL RELOCATE ALL MAILBOXES AND TRAFFIC SIGNS IN ACCORDANCE WITH ARTICLES 107.20 AND 107.25 AND AS DIRECTED BY THE ENGINEER. THIS WORK SHALL BE CONSIDERED AS INCLUDED IN THE COST OF THE PROJECT AND ANY DAMAGE SHALL BE THE CONTRACTOR'S RESPONSIBILITY. IN ALL LOCATIONS A 3 FOOT MINIMUM ACCESSIBLE PATH IS REQUIRED ADJACENT TO TRAFFIC SIGNS OR MAILBOXES.

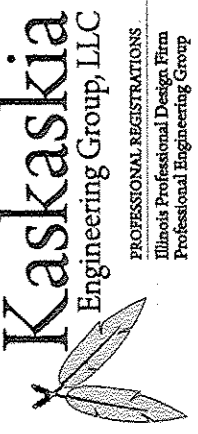
12. THE FOLLOWING UTILITY COMPANIES MAY HAVE FACILITIES LOCATED WITHIN THE LIMITS OF CONSTRUCTION WHICH MAY REQUIRE ADJUSTMENT, RELOCATION OR REMOVAL. ALL ARE MEMBERS OF J.U.L.I.E. UNLESS NOTES NOTHERWISE.

VILLAGE OF SHILOH (SEWER) 450 ENVIRONMENTAL DRIVE BELLEVILLE, ILLINOIS (618) 233-7146 AT&T 317 WEST MAIN ST. BELLEVILLE, ILLINOIS 62220 (618) 277-2288 AMEREN IP (GAS & ELECTRIC) 1050 WEST BLVD BELLEVILLE, ILLINOIS (800) 755-5000	ILLINOIS AMERICAN WATER (WATER) 100 N. WATERWORKS DRIVE BELLEVILLE, ILLINOIS (618) 277-7450 CHARTER COMMUNICATIONS 314 WEST MAIN STREET BELLEVILLE, ILLINOIS (618) 277-0760
---------------------------------------------------------------------------------------------------------------------------------------------------------------------------------------------------------------------------------------------------------------------------------------	--------------------------------------------------------------------------------------------------------------------------------------------------------------------------------------------------------------
13. NUTRIENT QUANTITIES HAVE BEEN DETERMINED USING AN APPLICATION RATE OF 90 LB/ACRE.
14. HOT-MIX ASPHALT SURFACING QUANTITIES HAVE BEEN DETERMINED USING AN APPLICATION RATE OF 112 LB/SQ YD/INCH.
15. PAVEMENT MARKING DAMAGED AND OR REMOVED DURING CONSTRUCTION SHALL BE REPLACED IN KIND. THIS WORK SHALL BE INCLUDED IN THE CONTRACT PRICE AND NO ADDITIONAL COMPENSATION WILL BE ALLOWED.

COMMITMENTS

NONE

208 East Main Street, Suite 100
 Belleville, Illinois 62220
 618.233.5877 phone
 618.233.5977 fax
 www.kaskadeng.com



PROFESSIONAL REGISTRATIONS
 Illinois Professional Design Firm
 Professional Engineering Group

CONTRACT NO. 97836
 SEC. NO. 15-00018-00-SW

REV.	DATE	DESCRIP
△		
△		
△		
△		
△		

GENERAL NOTES

LEBANON AVE. PEDESTRIAN FACILITY
 VILLAGE OF SHILOH
 ST. CLAIR COUNTY, IL

SHEET TITLE:

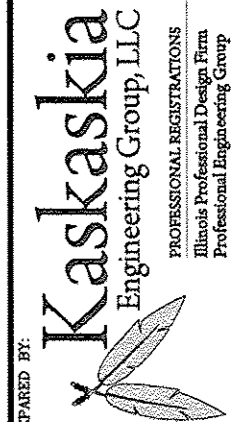
DESIGNED BY: JLT	SHEET
DRAWN BY: TJH	02
CHECKED BY: LDC	
DATE OF PRELIMINARY: 6/24/2016	
DATE OF FINAL: 7/15/2016	
SHEET NO. 02 OF 12 SHEETS	
PROJECT NUMBER 14-1030-01	

SUMMARY OF QUANTITIES

CODE NO.	ITEM	UNIT	TOTAL QUANTITIES
20200100	EARTH EXCAVATION	CU YD	97
20400800	FURNISHED EXCAVATION	CU YD	267
20800150	TRENCH BACKFILL	CU YD	250
25000110	SEEDING CLASS 1A	ACRE	0.25
25000400	NITROGEN FERTILIZER NUTRIENT	POUND	23
25000500	PHOSPHORUS FERTILIZER NUTRIENT	POUND	23
25000600	POTASSIUM FERTILIZER NUTRIENT	POUND	23
25100105	MULCH METHOD 1	ACRE	0.25
28000400	PERIMETER EROSION BARRIER	FOOT	730
28000500	INLET AND PIPE PROTECTION	EACH	8
35100500	AGGREGATE BASE COURSE, TYPE A 6"	SQ YD	111
40201000	AGGREGATE FOR TEMPORARY ACCESS	TON	84
40800050	INCIDENTAL HOT-MIX ASPHALT SURFACING	TON	15
42300400	PORTLAND CEMENT CONCRETE DRIVEWAY PAVEMENT, 8 INCH	SQ YD	256
42400100	PORTLAND CEMENT CONCRETE SIDEWALK 4 INCH	SQ FT	3,803
42400300	PORTLAND CEMENT CONCRETE SIDEWALK 6 INCH	SQ FT	1,026
44000100	PAVEMENT REMOVAL	SQ YD	95
44000200	DRIVEWAY PAVEMENT REMOVAL	SQ YD	397
44000300	CURB REMOVAL	FOOT	93
44000600	SIDEWALK REMOVAL	SQ FT	361
44004250	PAVED SHOULDER REMOVAL	SQ YD	195
44200101	PAVEMENT PATCHING TYPE IV, 8 INCH	SQ YD	89
48203029	HOT-MIX ASPHALT SHOULDERS, 8"	SQ YD	195
50105220	PIPE CULVERT REMOVAL	FOOT	187
50200100	STRUCTURE EXCAVATION	CU YD	12
52200800	SEGMENTAL CONCRETE BLOCK WALL	SQ FT	78
550A0340	STORM SEWERS, CLASS A TYPE 2, 12"	FOOT	213
55100900	STORM SEWER REMOVAL, 18"	FOOT	26
60235700	INLETS, TYPE A, TYPE 3 FRAME AND GRATE	EACH	2
60240220	INLETS, TYPE B, TYPE 3 FRAME AND GRATE	EACH	5
60240301	INLETS, TYPE B, TYPE 8 GRATE	EACH	1
60603800	COMBINATION CONCRETE CURB AND GUTTER, TYPE B-6-12	FOOT	962.0
Δ 66900200	NON-SPECIAL WASTE DISPOSAL	CU YD	215
Δ 66900450	SPECIAL WASTE PLANS AND REPORTS	LSUM	1
Δ 66900530	SOIL DISPOSAL ANALYSIS	EACH	1
67100100	MOBILIZATION	LSUM	1
Δ 80300100	LOCATING UNDERGROUND CABLE	FOOT	20
Δ 81400100	HANDHOLE	EACH	1
Δ 89502380	REMOVE EXISTING HANDHOLE	EACH	1
70056648	STORM SEWERS, TYPE 1, WATER MAIN QUALITY PIPE, 12"	FOOT	400
70056652	STORM SEWERS, TYPE 1, WATER MAIN QUALITY PIPE, 18"	FOOT	24
Δ X0327235	LOCATING UNDERGROUND UTILITIES	FOOT	1,025
Δ X6640306	CHAIN LINK FENCE TO BE RELOCATED	FOOT	88
X7010216	TRAFFIC CONTROL AND PROTECTION (SPECIAL)	LSUM	1

Δ REPRESENTS SPECIALTY ITEMS

208 East Main Street, Suite 100
 Bellerive, Illinois 62220
 618.233.5877 Phone
 618.233.5977 Fax
 www.kaskaskiaeng.com



PROFESSIONAL REGISTRATIONS
 Illinois Professional Design Firm
 Professional Engineering Group

CONTRACT NO. 97636
 SEC. NO. 15-00018-00-SW

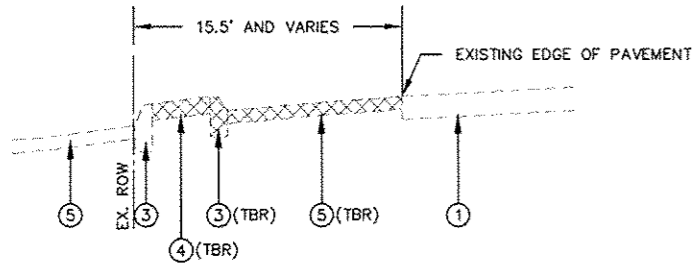
REV.	DATE	DESCRIP
Δ		
Δ		
Δ		
Δ		
Δ		

SUMMARY OF QUANTITIES

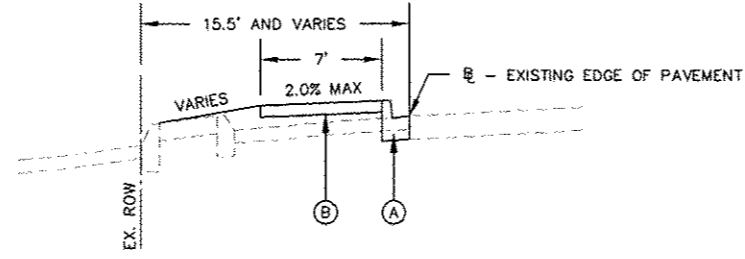
PROJECT TITLE:
 LEBANON AVE. PEDESTRIAN FACILITY
 VILLAGE OF SHILOH
 ST. CLAIR COUNTY, IL

DESIGNED BY: JLT	SHEET
DRAWN BY: TJH	03
CHECKED BY: LDC	
DATE OF PRELIMINARY: 6/24/2016	
DATE OF FINAL: 7/15/2016	
SHEET NO. 03 OF 12 SHEETS	
PROJECT NUMBER 14-1030.01	

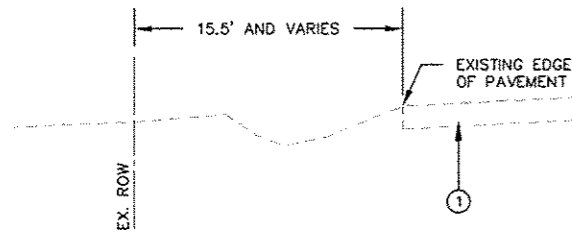
FILE: P:\14-1030.01 ShiloH - Lebanon Ave Pedestrian Facility\10_CAD\CAD09 Sheets\14-1030.01_03.dwg



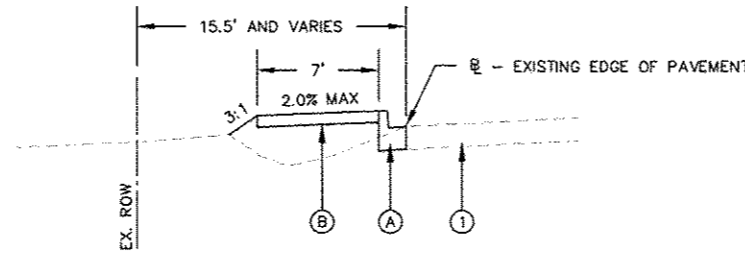
EXISTING TYPICAL SECTION - LEBANON AVE.
STA. 500+11.51 TO STA. 501+73.26



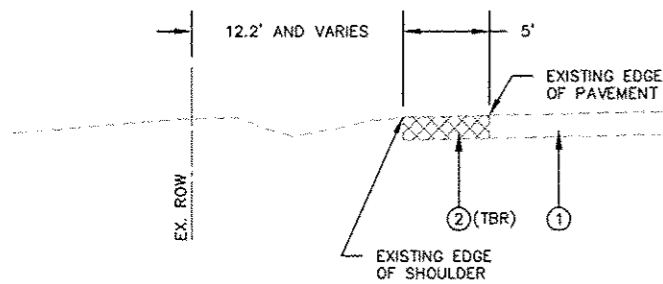
EXISTING TYPICAL SECTION - LEBANON AVE.
STA. 500+11.51 TO STA. 501+73.26



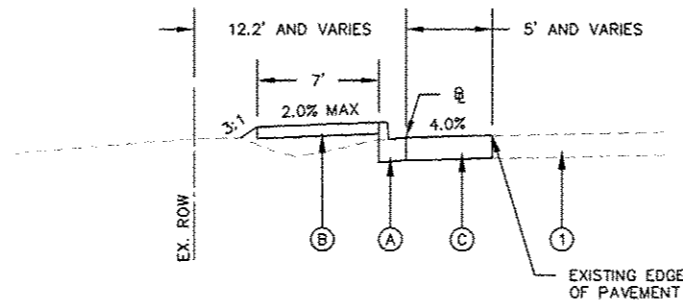
EXISTING TYPICAL SECTION - LEBANON AVE.
STA. 501+73.26 TO STA. 506+13.52



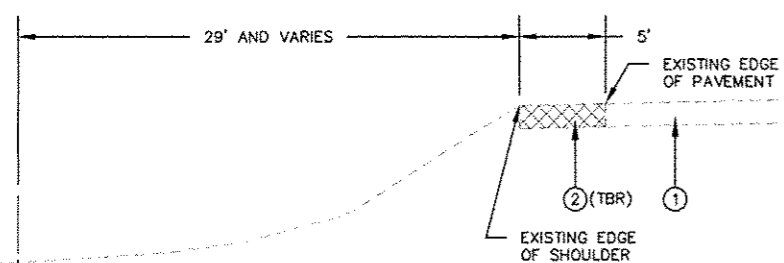
PROPOSED TYPICAL SECTION - LEBANON AVE.
STA. 501+73.26 TO STA. 506+13.52



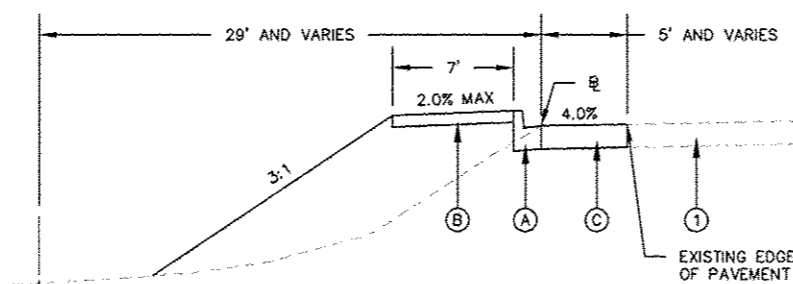
EXISTING TYPICAL SECTION - LEBANON AVE.
STA. 506+13.52 TO STA. 509+05.74



PROPOSED TYPICAL SECTION - LEBANON AVE.
STA. 506+13.52 TO STA. 509+05.74



EXISTING TYPICAL SECTION - LEBANON AVE.
STA. 509+05.74 TO STA. 509+81.15



PROPOSED TYPICAL SECTION - LEBANON AVE.
STA. 509+05.74 TO STA. 509+81.15

EXISTING LEGEND

- ① EXISTING ASPHALT PAVEMENT, APPROXIMATELY 8 INCH
- ② EXISTING ASPHALT SHOULDER, APPROXIMATELY 8 INCH
- ③ EXISTING BARRIER CURB
- ④ EXISTING SIDEWALK
- ⑤ EXISTING BITUMINOUS PAVEMENT, APPROXIMATELY 8 INCH

PROPOSED LEGEND

- Ⓐ COMBINATION CONCRETE CURB AND GUTTER, TYPE B-6.12
- Ⓑ PORTLAND CEMENT CONCRETE SIDEWALK, 4 INCH
- Ⓒ HOT-MIX ASPHALT SHOULDERS, 8" INCH

TO BE REMOVED
(SEE PLAN AND PROFILES FOR ADDITIONAL INFORMATION)

NOTES:

SIDEWALK SLOPE DIRECTION VARIES. SEE PLAN AND PROFILES FOR ADDITIONAL INFORMATION

208 East Main Street, Suite 100
Bellefonte, Illinois 62220
618.233.5877 phone
618.233.5977 fax
www.kaskang.com

Kaskaskia
Engineering Group, LLC
PROFESSIONAL REGISTRATIONS
Illinois Professional Design Firm
Professional Engineering Group

PREPARED BY:

CONTRACT NO. 97636
SEC. NO. 15-00018-00-SW

REV.	DATE	DESCRIP
△		
△		
△		
△		
△		

TYPICAL SECTIONS

LEBANON AVE. PEDESTRIAN FACILITY
VILLAGE OF SHILOH
ST. CLAIR COUNTY, IL

DESIGNED BY: JLT	SHEET
DRAWN BY: TJH	04
CHECKED BY: LDC	
DATE OF PRELIMINARY: 6/24/2016	
DATE OF FINAL: 7/15/2016	
SHEET NO. 04 OF 12 SHEETS	
PROJECT NUMBER 14-1028-01	

FILE: P:\14-1028-01 ShiloH - Lebanon Ave Pedestrian Facility\10_CAD\CADD Sheets\14-1028-01_TYP.dwg

EARTHWORK SCHEDULE

STATION	STATION	EARTH EXCAVATION (CU YD)	EARTH EXCAVATION ADJUSTED FOR SHRINKAGE (NOTE 1) (CU YD)	EMBANKMENT (NOTE 2) (CU YD)	FURNISHED EXCAVATION (NOTE 3) (CU YD)
500+11.51	509+81.15	97	73	340	-267
TOTAL		97	73	340	-267

EARTHWORK NOTES:

- ESTIMATED SHRINKAGE FACTOR = 25%.
- APPROXIMATE EMBANKMENT QUANTITY IS SHOWN FOR INFORMATION ONLY.
- FURNISHED EXCAVATION = EARTHWORK BALANCE WASTE (+), OR SHORTAGE (-).

SEEDING SCHEDULE

STATION	STATION	SEEDING CL 1A (ACRE)	NITROGEN FERT NUTR (POUND)	PHOSPHORUS FERT NUTR (POUND)	POTASSIUM FERT NUTR (POUND)	MULCH METHOD 1 (ACRE)
LEBANON AVENUE						
500+12	509+81	0.25	23	23	23	0.25
TOTAL		0.25	23	23	23	0.25

SIDEWALK SCHEDULE

STATION	STATION	OFFSET	SIDEWALK REM (SQ FT)	PC CONC SIDEWALK 4 (SQ FT)	PC CONC SIDEWALK 6 (SQ FT)
LEBANON AVENUE					
500+12	509+81	LT	361	3,803	1,026
TOTAL			361	3,803	1,026

CURB & GUTTER SCHEDULE

STATION	STATION	OFFSET	CURB REM (FOOT)	COMB CC&G TB6.12 (FOOT)
LEBANON AVENUE				
500+12	509+81	LT	93	962.0
TOTAL			93	962.0

EROSION CONTROL SCHEDULE

STATION	OFF SET	STATION	OFF SET	PERIMETER EROS BAR (FOOT)	INLET & PIPE PROTECT (EACH)
LEBANON AVENUE					
500+70	14.4' LT	501+54	14.2' LT	83	
501+95	15.0' LT	503+00	14.9' LT	105	
503+28	12.0' LT	503+82	14.7' LT	45	
504+22	14.3' LT	505+76	14.2' LT	156	
506+07	10.9' LT	507+00	10.7' LT	94	
507+25	9.5' LT	508+48	11.1' LT	123	
508+60	10.4' LT	509+81	23.3' LT	124	
503+60	0.0' LT				1
505+25	0.0' LT				1
506+50	0.0' LT				1
507+50	0.0' LT				1
508+75	0.0' LT				1
509+60	0.0' LT				1
509+70	0.0' LT				1
509+73	16.1' LT				1
TOTAL				730	8

208 East Main Street, Suite 100
 Bellville, Illinois 61220
 618.233.5877 Phone
 618.233.5977 Fax
 www.kaskaskiaeng.com

Kaskaskia
 Engineering Group, LLC

PROFESSIONAL REGISTRATIONS
 Illinois Professional Design Firm
 Professional Engineering Group

LICENSE NO.
 184-004773
 20-5080586

CONTRACT NO. 87636
 SEC. NO. 15-00018-00-SW

REV	DATE	DESCRIP
△		
△		
△		
△		
△		

SCHEDULE OF QUANTITIES

PROJECT TITLE:
 LEBANON AVE. PEDESTRIAN FACILITY
 VILLAGE OF SHILOH
 ST. CLAIR COUNTY, IL

DESIGNED BY: JLT	SHEET
DRAWN BY: TJH	05
CHECKED BY: LOC	
DATE OF PRELIMINARY: 6/24/2016	
DATE OF FINAL: 7/15/2016	
SHEET NO. 05 OF 12 SHEETS	
PROJECT NUMBER 14-1030-01	

FILE: P:\14-1030-01 ShiloH - Lebanon Ave Pedestrian Facility\10-CAD\CAD00 Sheets\14-1030-01_04.dwg

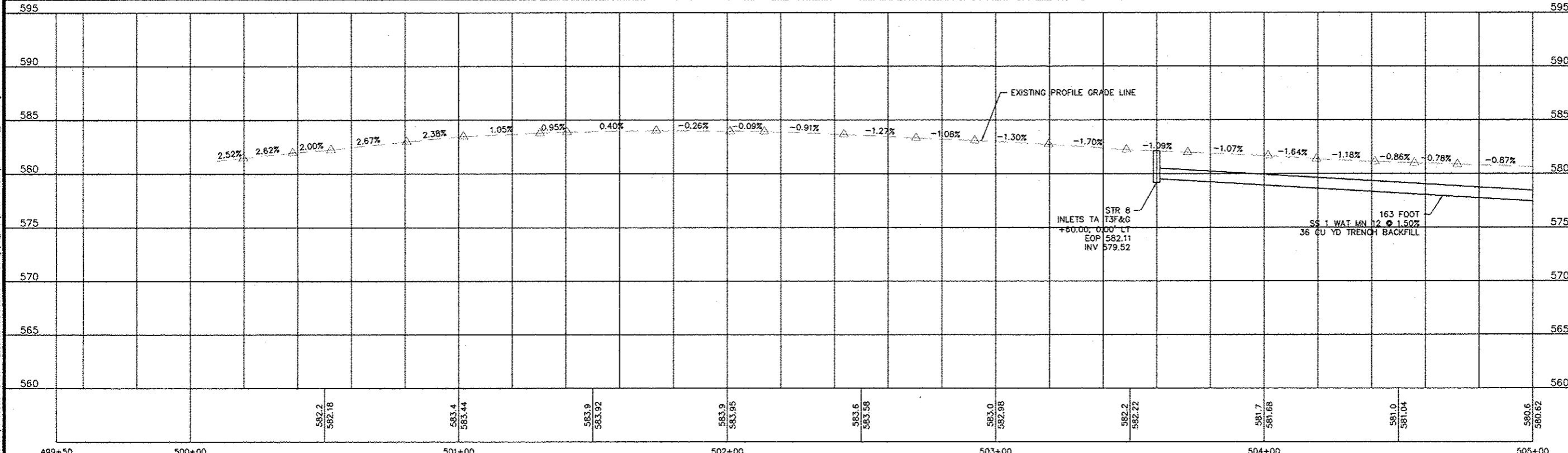
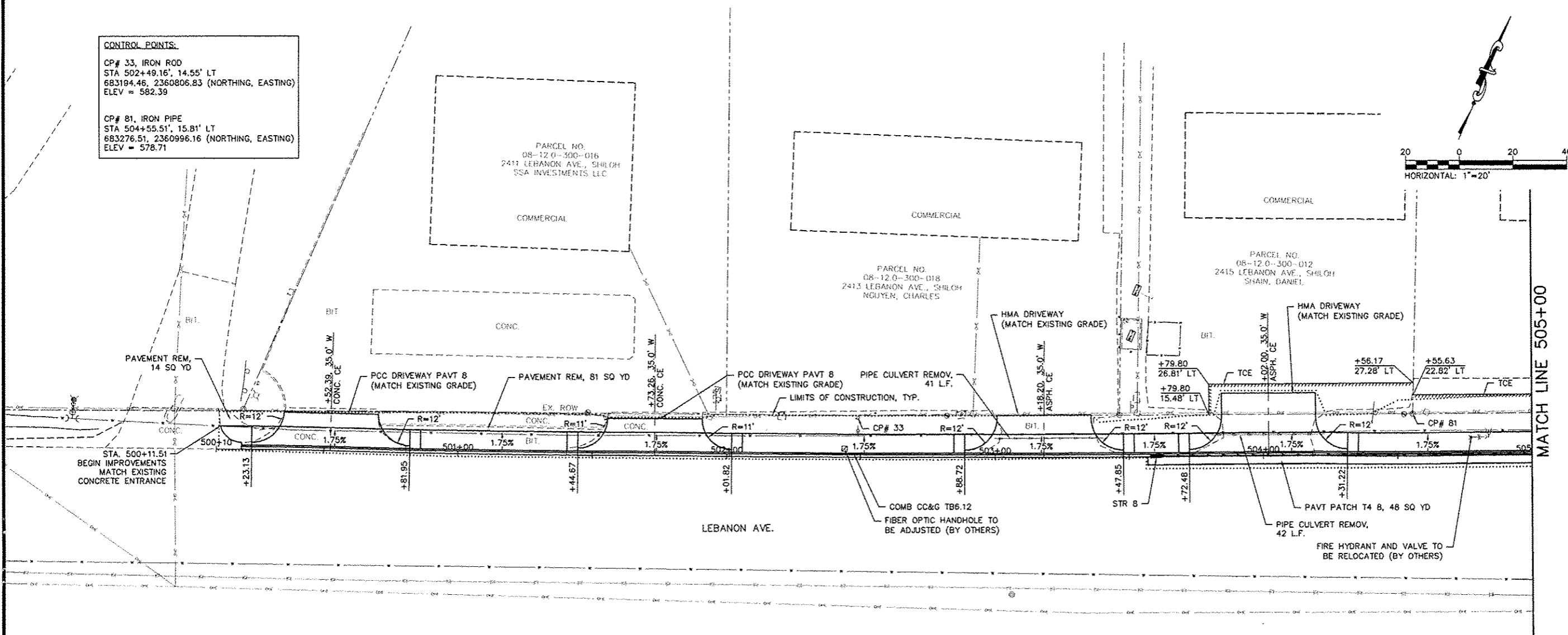
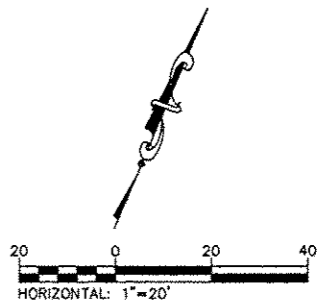
CONTROL POINTS:
 CP# 33, IRON ROD
 STA 502+49.16', 14.55' LT
 683194.46, 2360806.83 (NORTHING, EASTING)
 ELEV = 582.39

CP# 81, IRON PIPE
 STA 504+55.51', 15.81' LT
 683276.51, 2360996.16 (NORTHING, EASTING)
 ELEV = 578.71

PARCEL NO.
 08-12.0-300-016
 2411 LEBANON AVE., SHILOH
 SSA INVESTMENTS LLC

PARCEL NO.
 08-12.0-300-018
 2413 LEBANON AVE., SHILOH
 NGUYEN, CHARLES

PARCEL NO.
 08-12.0-300-012
 2415 LEBANON AVE., SHILOH
 SHAIN, DANIEL



208 East Main Street, Suite 100
 Belleville, Illinois 62220
 618.233.5877 phone
 618.233.5977 fax
 www.kaskasia.com

LICENSE NO.
 184.004773
 20-5080586

Kaskasia
 Engineering Group, LLC

PROFESSIONAL REGISTRATIONS
 Illinois Professional Design Firm
 Professional Engineering Group

CONTRACT NO. 97636
 SEC. NO. 15-00018-00-SW

REV	DATE	DESCRIP
△		
△		
△		
△		
△		

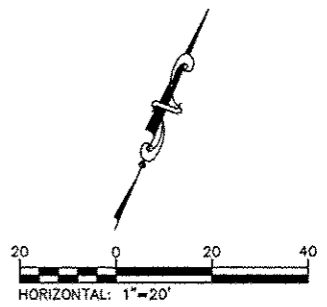
PLAN AND PROFILES

PROJECT TITLE:
 LEBANON AVE. PEDESTRIAN FACILITY
 VILLAGE OF SHILOH
 ST. CLAIR COUNTY, IL

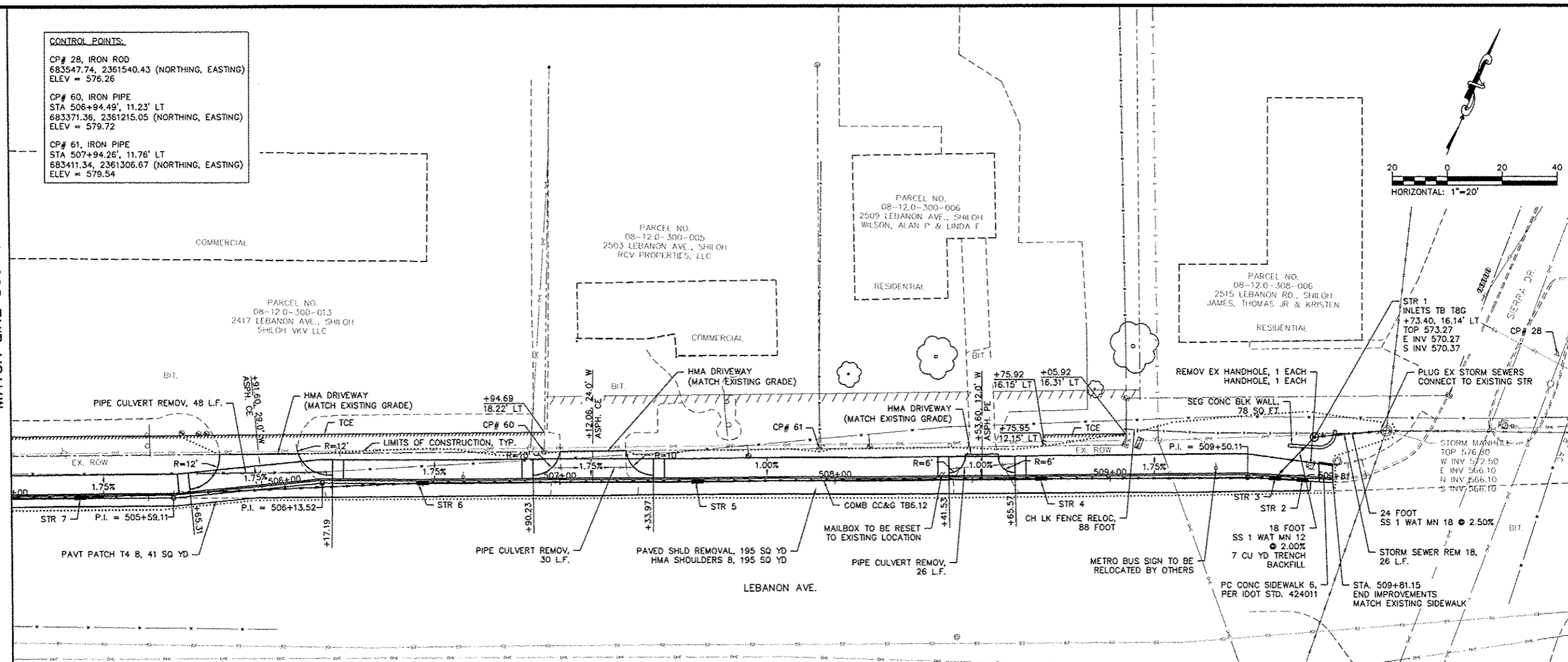
DESIGNED BY: JLT	SHEET
DRAWN BY: TJH	06
CHECKED BY: LDC	
DATE OF PRELIMINARY: 6/24/2016	
DATE OF FINAL: 7/15/2016	
SHEET NO. 06 OF 12 SHEETS	
PROJECT NUMBER 14-1030.01	

FILE P:\14-1030.01 Shiloh - Lebanon Ave Pedestrian Facility\10_CAD\CADD Sheets\14-1030.01_Plan.dwg

CONTROL POINTS:
 CP# 28, IRON ROD
 683547.74, 2361540.43 (NORTHING, EASTING)
 ELEV = 576.26
 CP# 60, IRON PIPE
 STA 506+94.49', 11.23' LT
 683371.36, 2361215.05 (NORTHING, EASTING)
 ELEV = 579.72
 CP# 61, IRON PIPE
 STA 507+94.26', 11.76' LT
 683411.34, 2361306.67 (NORTHING, EASTING)
 ELEV = 579.54



MATCH LINE 505+00



208 East Main Street, Suite 100
 Belleville, Illinois 62220
 618.233.5877 phone
 618.233.5977 fax
 www.kaskaskiaeng.com
 LICENSE NO. 184.004773
 20-5080586

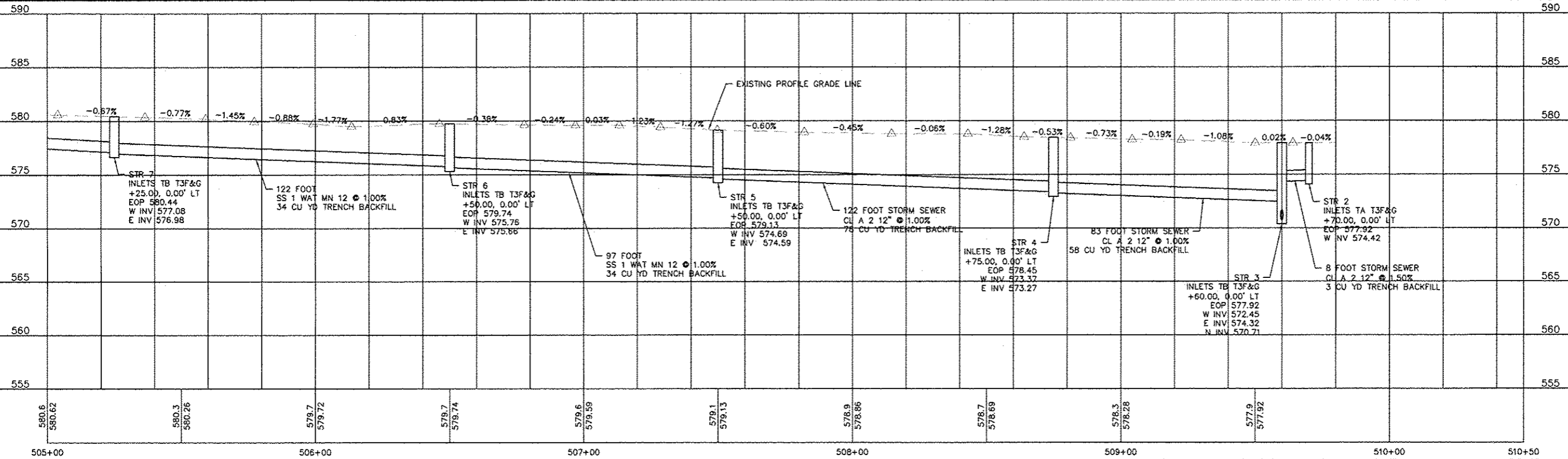


PROFESSIONAL REGISTRATIONS
 Illinois Professional Design Firm
 Professional Engineering Group

CONTRACT NO. 97636
 SEC. NO. 15-00018-00-SW

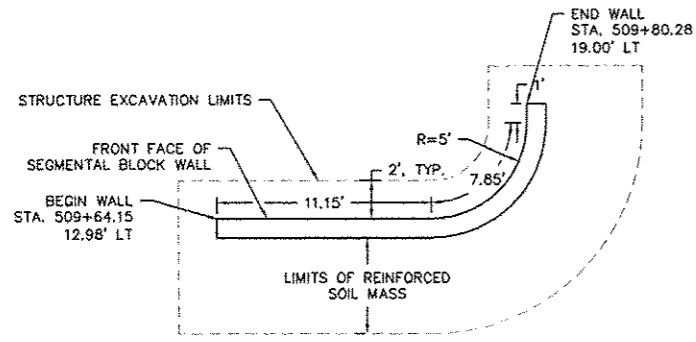
REV	DATE	DESCRIP
△		
△		
△		
△		

FILE: P:\14-1030.01 Shiloah - Lebanon Ave Pedestrian Facility\10_CAD\200 Sheets\14-1030.01_P1NF.dwg

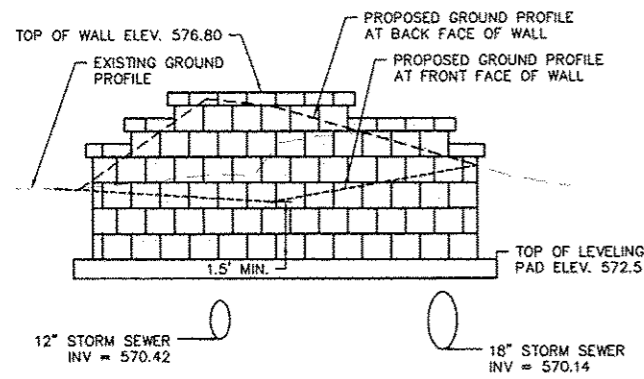


SHEET TITLE:
 PROJECT TITLE:
 LEBANON AVE. PEDESTRIAN FACILITY
 VILLAGE OF SHILOAH
 ST. CLAIR COUNTY, IL

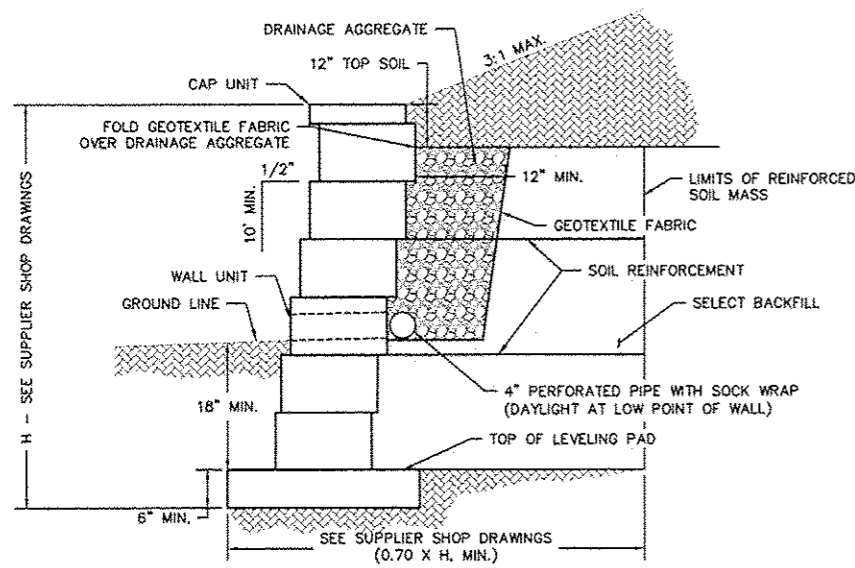
DESIGNED BY: JLT	SHEET
DRAWN BY: TJH	07
CHECKED BY: LDC	
DATE OF PRELIMINARY: 6/24/2016	
DATE OF FINAL: 7/15/2016	
SHEET NO. 07 OF 12 SHEETS	
PROJECT NUMBER 14-1030.01	



PLAN VIEW
N.T.S.

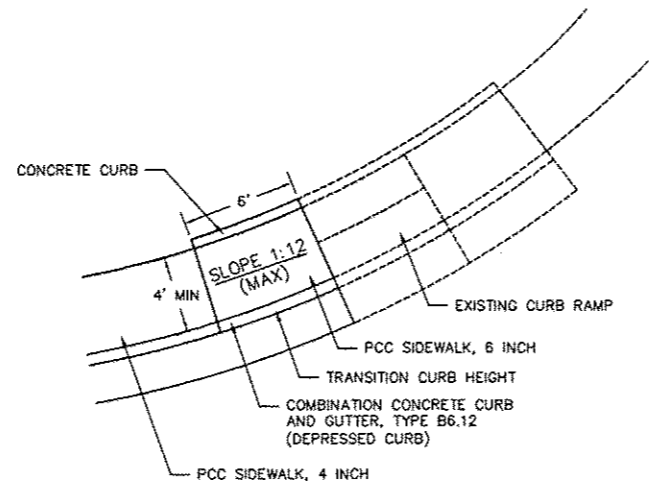


PROFILE VIEW
N.T.S.

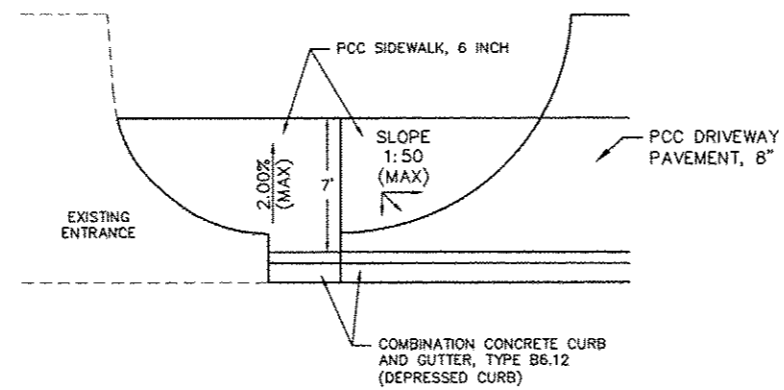


SEGMENTAL CONCRETE BLOCK WALL
CONSTRUCTION DETAIL
N.T.S.

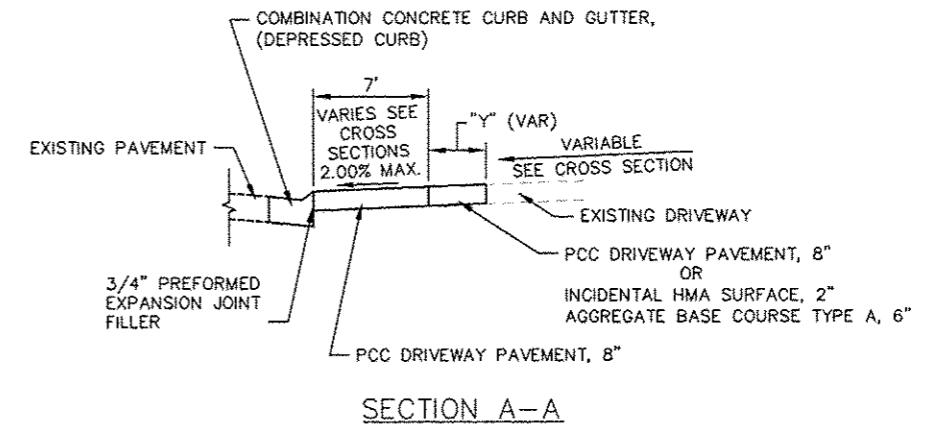
NOTES:
CONTRACTOR TO REMOVE EXISTING EMBANKMENT AS NECESSARY TO INSTALL SOIL REINFORCEMENT. CONTRACTOR TO COMPACT SOILS OVER THE GEOGRID PER MANUFACTURER'S RECOMMENDATIONS. ALL QUANTITIES SHOWN SHALL BE VERIFIED BY WALL DESIGNER. ACTUAL MEASUREMENTS AND PAYMENT SHALL BE CONSIDERED INCIDENTAL TO THE SEGMENTAL CONCRETE BLOCK WALL.



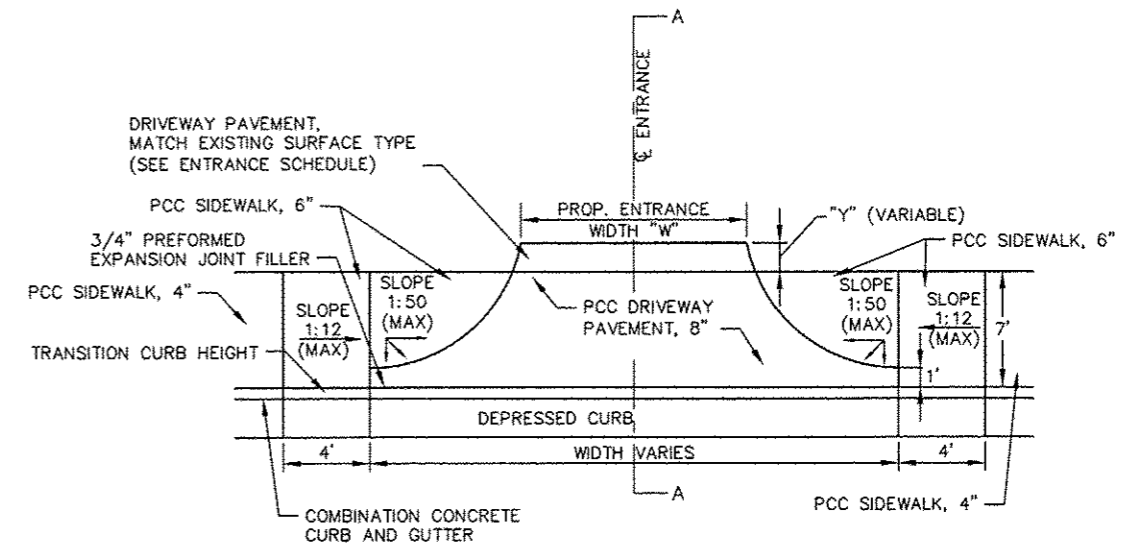
TYPICAL RAMP DETAILS AT SIERRA
DRIVE AND LEBANON AVENUE
N.T.S.



TYPICAL RAMP DETAIL AT
BEGINNING OF IMPROVEMENTS
N.T.S.



SECTION A-A



TYPICAL ENTRANCE DETAIL
N.T.S.

ENTRANCE SCHEDULE

STATION	OFFSET	ENTRANCE TYPE	ENTRANCE WIDTH "W" (FOOT)	ENTRANCE DEPTH "Y" (FOOT)	AGG BASE CSE A 6 (SQ YD)	AGGREGATE-TEMP ACCESS (TON)	DRIVE PAVEMENT REM (SQ YD)	PCC DRIVEWAY PAVT 8 (SQ YD)	INCIDENTAL HMA SURF (TON)	
LEBANON AVE										
500+52.39	LT	C.E.	35.0	5.5		13	71	58		
501+73.28	LT	C.E.	35.0	5.0		13	69	56		
503+18.20	LT	C.E.	35.0	7.0	29	15	69	37	4	
504+02.00	LT	C.E.	35.0	15.0	59	22	70	36	7	
505+91.80	LT	C.E.	29.0	4.5	14	10	69	31	2	
507+12.06	LT	C.E.	24.0	3.0	8	8	32	26	1	
508+53.80	LT	P.E.	12.0	1.0	1	3	17	12	1	
TOTAL						111	84	397	256	15

208 Eas. Main Street, Suite 100
Bellefonte, Illinois 62220
618.233.5877 Phone
618.233.5977 Fax
www.kaskaskiaeng.com

Kaskaskia
Engineering Group, LLC

PROFESSIONAL REGISTRATIONS
Illinois Professional Design Firm
Professional Engineering Group

LICENSE NO.
184-004773
20-5080386

CONTRACT NO. 87636
SEC. NO. 15-00018-00-SW

REV.	DATE	DESCRIP
△		
△		
△		
△		
△		

SHEET TITLE: DETAILS AND ENTRANCE SCHEDULE

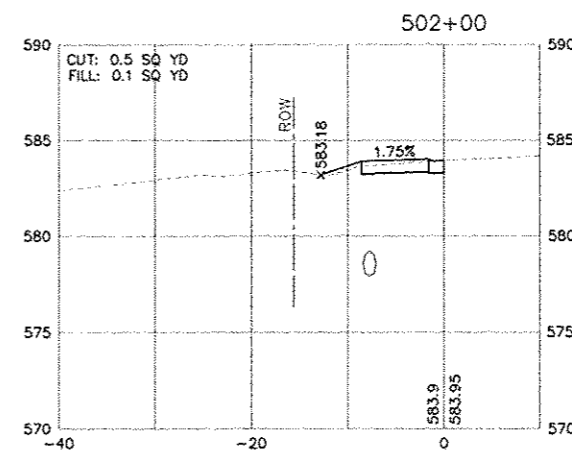
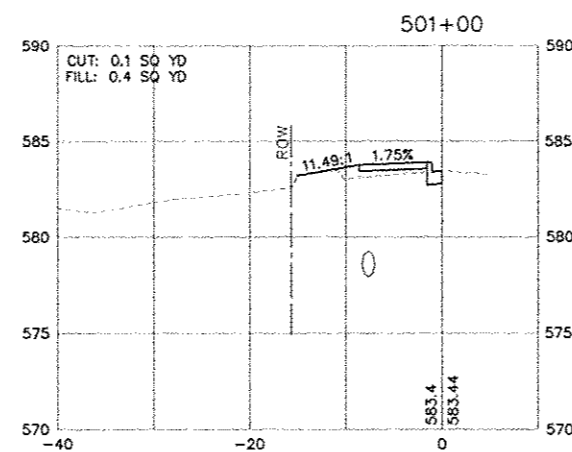
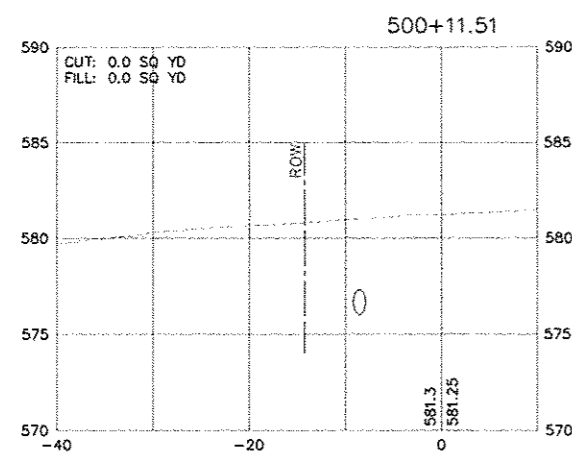
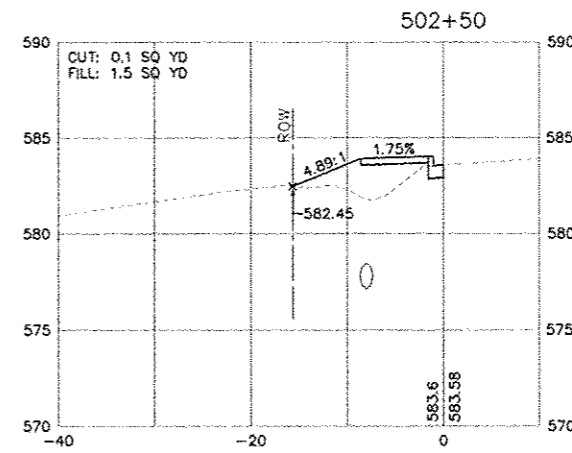
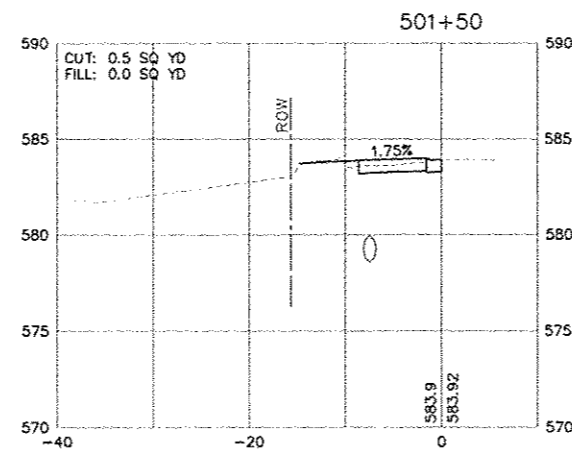
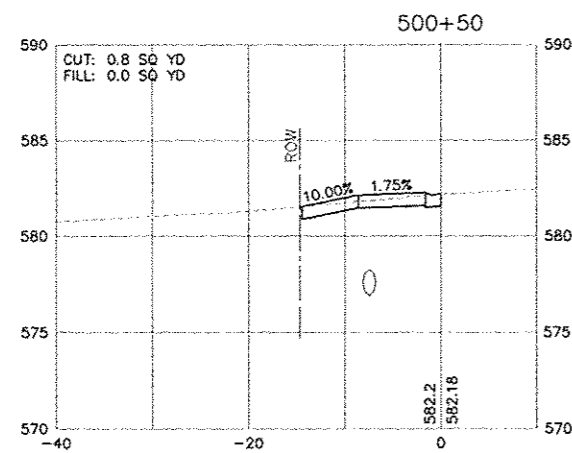
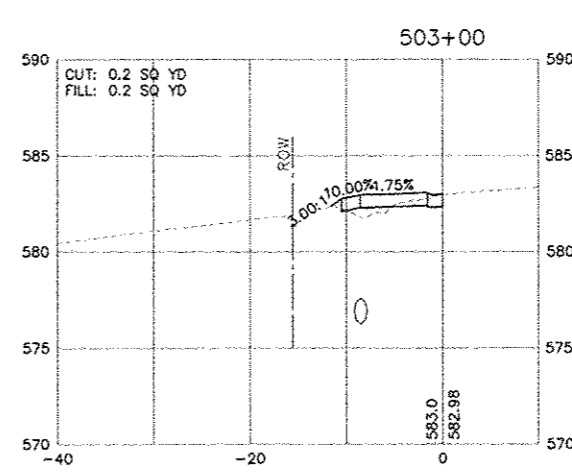
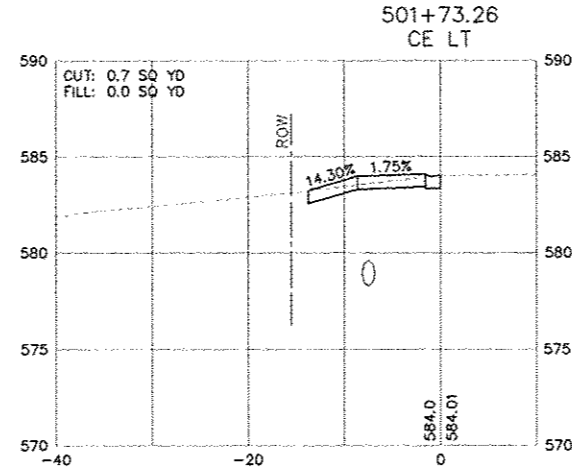
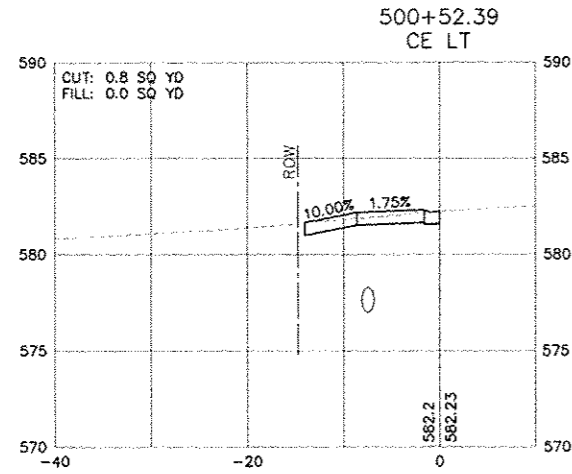
PROJECT TITLE: LEBANON AVE. PEDESTRIAN FACILITY
VILLAGE OF SHILOH
ST. CLAIR COUNTY, IL

DESIGNED BY: JLT
DRAWN BY: TJH
CHECKED BY: LDC
DATE OF PRELIMINARY: 6/24/2016
DATE OF FINAL: 7/15/2016

SHEET NO. 08 OF 12 SHEETS
PROJECT NUMBER 14-1030.01

FILE: P:\14-1030.01 Shiloh - Lebanon Ave Pedestrian Facility\10_CAD\0200 Sheets\14-1030.01_Details.dwg

FILE: P:\14-1030.01_SHEB - Lebanon Ave Pedestrian Facility\10_CADD\Sheet\14-1030.01_25.dwg



208 East Main Street, Suite 100
Bellefonte, Illinois 62220
618.233.5877 phone
618.233.5977 fax
www.kaskasia.com

Kaskasia
Engineering Group, LLC

PROFESSIONAL REGISTRATIONS
Illinois Professional Design Firm
Professional Engineering Group

LICENSE NO.
184-004773
20-5080586

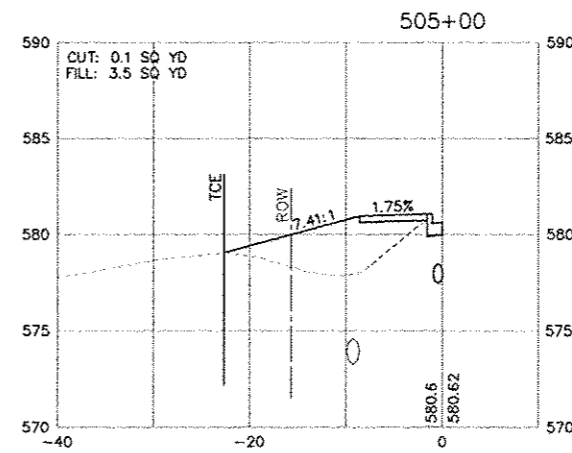
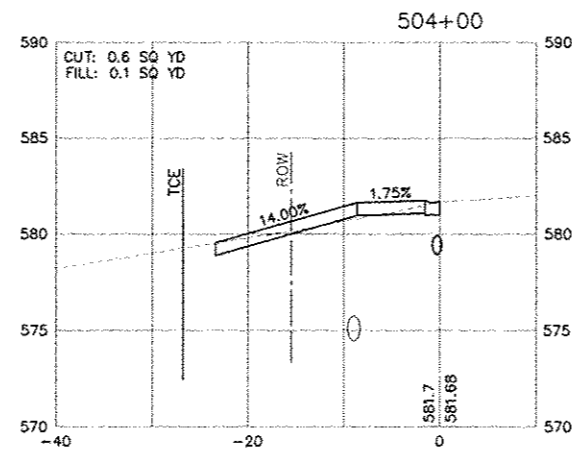
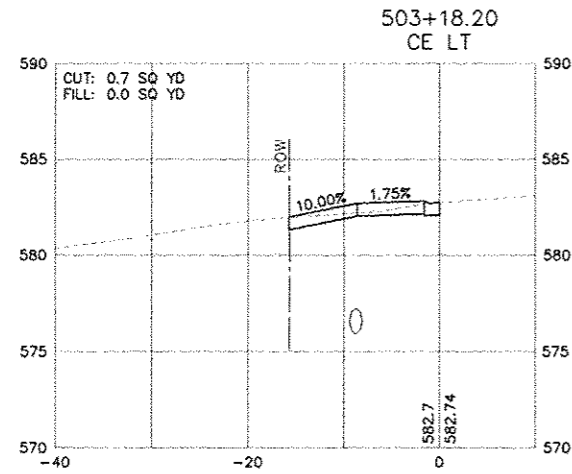
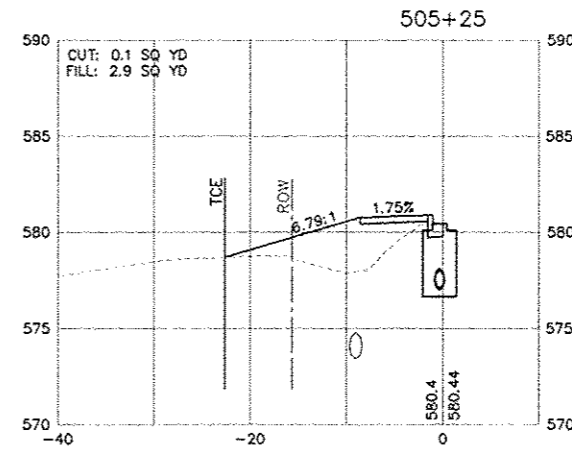
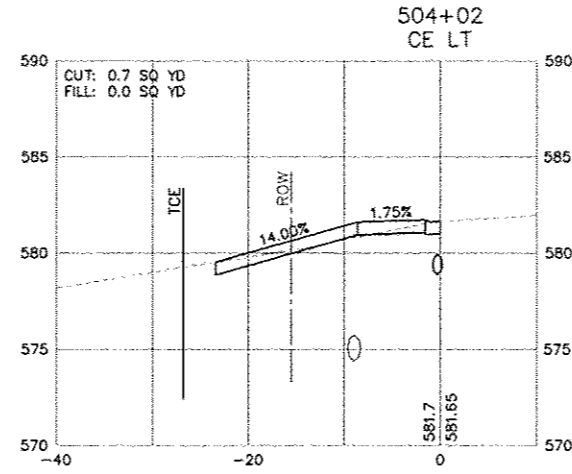
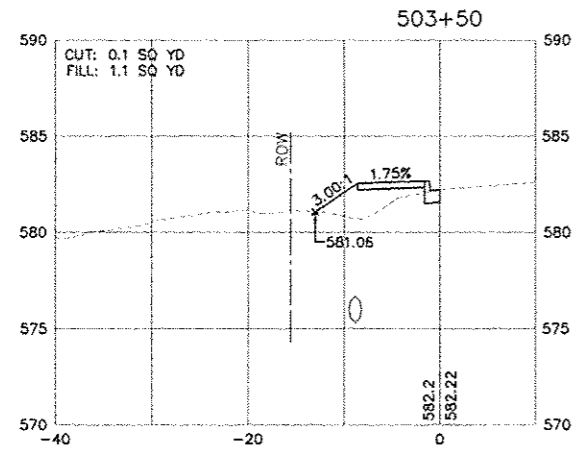
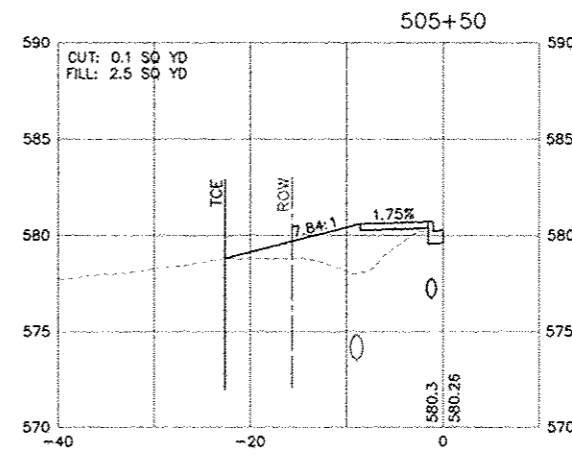
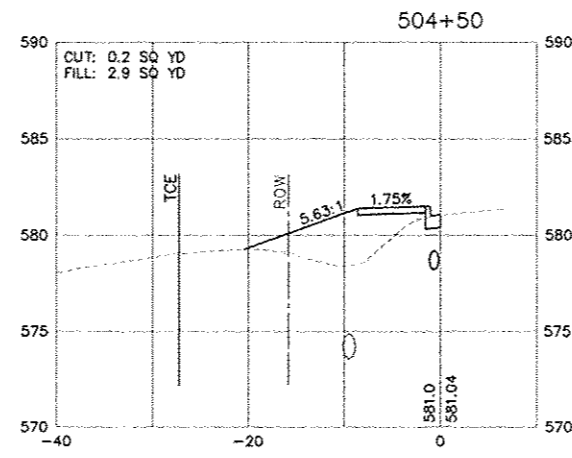
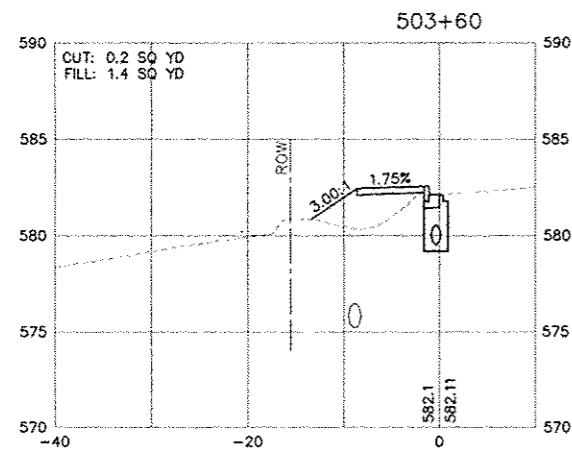
CONTRACT NO. 97636
SEC. NO. 15-00018-00-SW

REV.	DATE	DESCRIP
△		
△		
△		
△		
△		

SHEET TITLE:
CROSS SECTIONS

PROJECT TITLE:
**LEBANON AVE. PEDESTRIAN FACILITY
VILLAGE OF SHILOH
ST. CLAIR COUNTY, IL**

DESIGNED BY: JLT	SHEET
DRAWN BY: TJH	09
CHECKED BY: LDC	
DATE OF PRELIMINARY: 6/24/2016	
DATE OF FINAL: 7/15/2016	
SHEET NO. 09 OF 12 SHEETS	
PROJECT NUMBER 14-1030.01	



209 East Main Street, Suite 100
 Belleville, Illinois 62220
 618.233.5877 phone
 618.233.5977 fax
 www.kaskaseng.com



PREPARED BY:

PROFESSIONAL REGISTRATIONS
 Illinois Professional Design Firm
 Professional Engineering Group

LICENSE NO.
 184.004773
 20-5080386

CONTRACT NO. 07636
 SEC. NO. 16-00010-00-SW

REV.	DATE	DESCRIP
△		
△		
△		
△		
△		

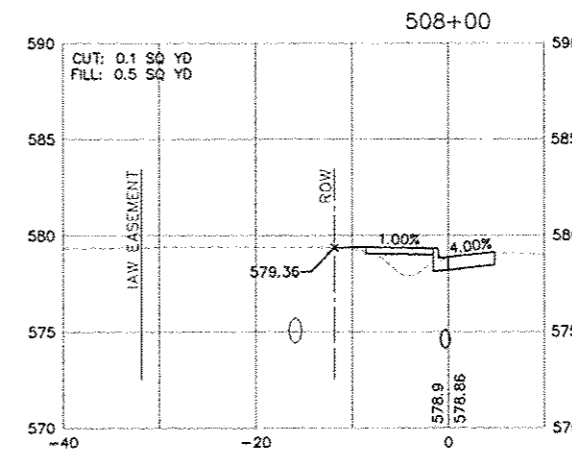
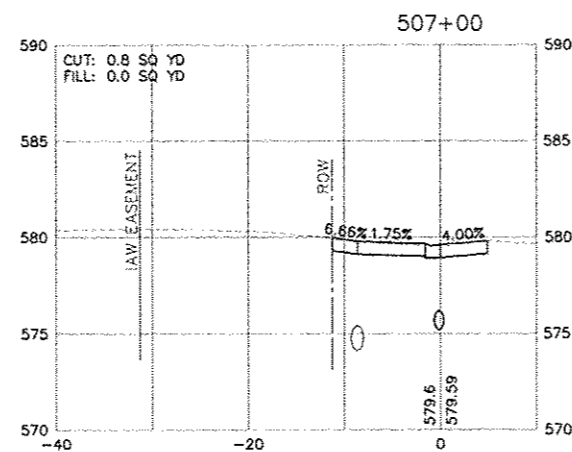
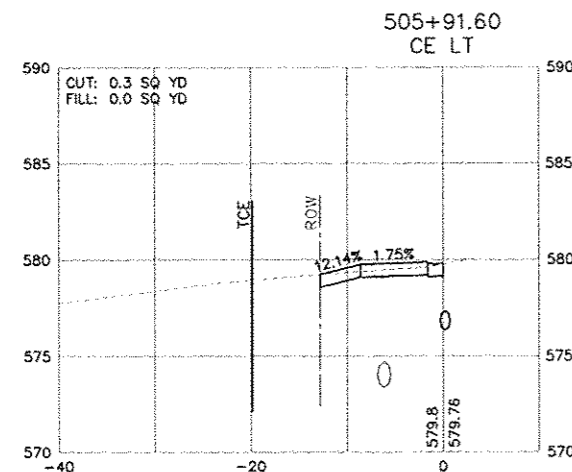
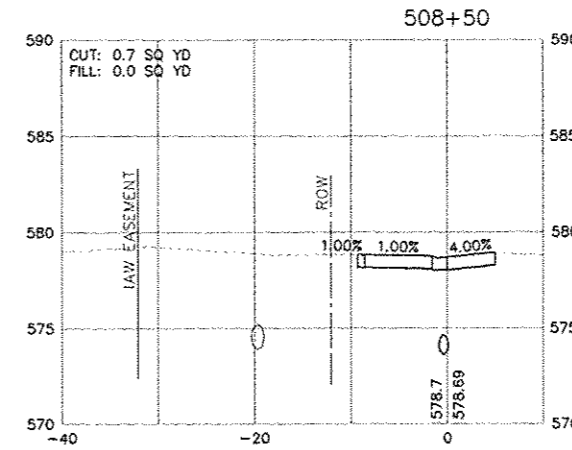
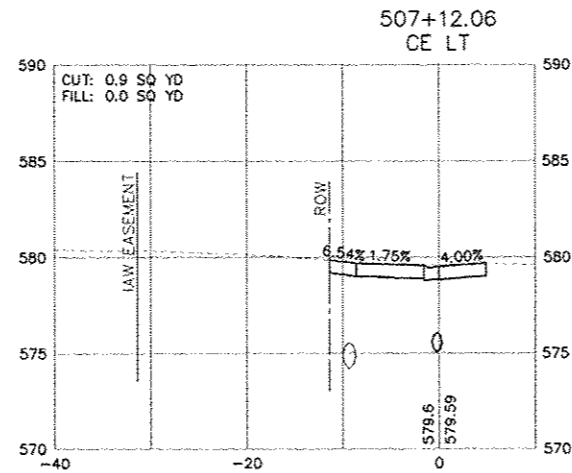
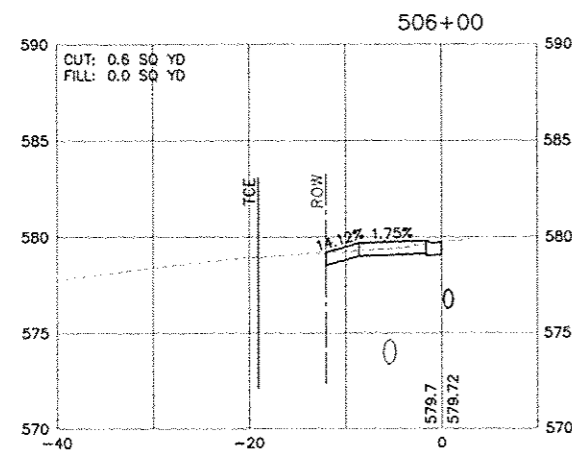
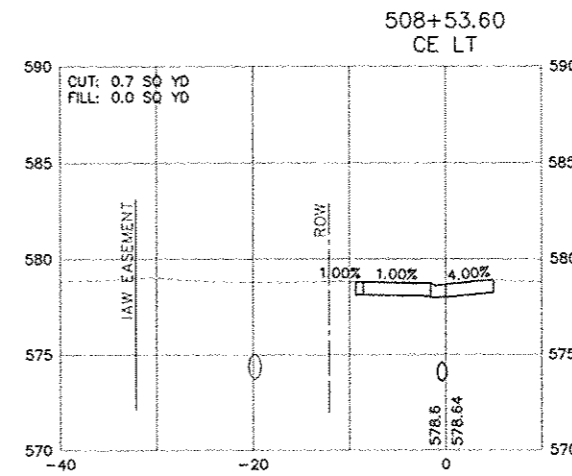
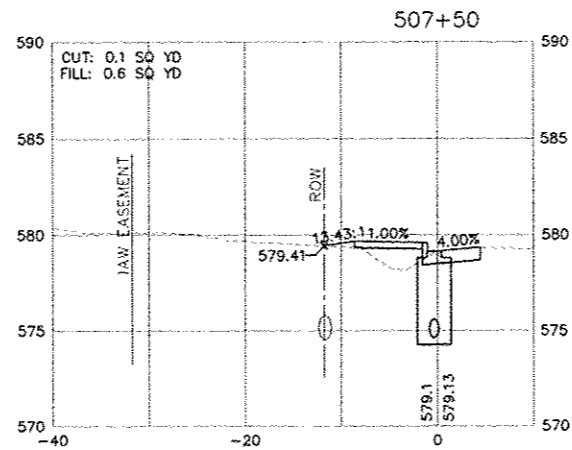
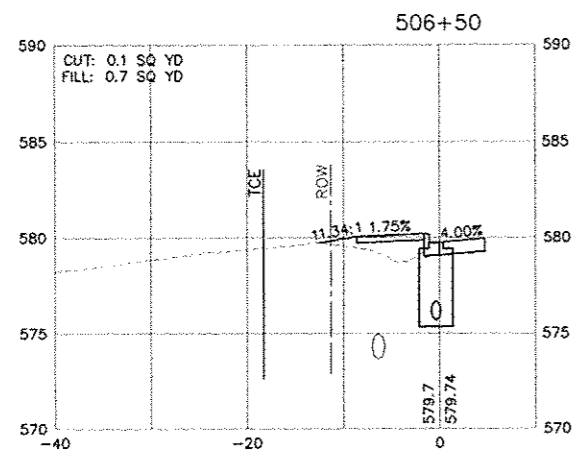
CROSS SECTIONS

PROJECT TITLE:
 LEBANON AVE. PEDESTRIAN FACILITY
 VILLAGE OF SHILOH
 ST. CLAIR COUNTY, IL

SHEET TITLE:

DESIGNED BY: JLT	SHEET
DRAWN BY: TJH	
CHECKED BY: LDC	10
DATE OF PRELIMINARY: 6/24/2016	
DATE OF FINAL: 7/13/2016	
SHEET NO. 10 OF 12 SHEETS	
PROJECT NUMBER 14-1030.01	

FILE: P:\14-1030.01\ShiloH - Lebanon Ave Pedestrian Facility\10_CAD\CAD Sheets\14-1030.01_CS.dwg



PREPARED BY: **Kaskaskia Engineering Group, LLC**

208 East Main Street, Suite 100
Bellaire, Illinois 62220
618.233.5977 phone
618.233.5977 fax
www.kaskaskiaeng.com

PROFESSIONAL REGISTRATIONS
Illinois Professional Design Firm
Professional Engineering Group

LICENSE NO.
184.004773
20-5080586

CONTRACT NO. 07836
SEC. NO. 15-00018-00-SW

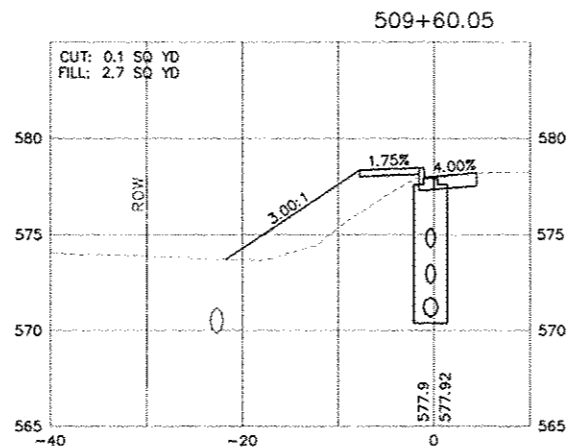
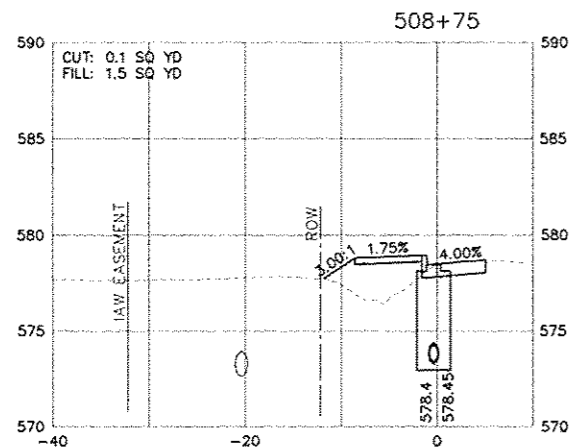
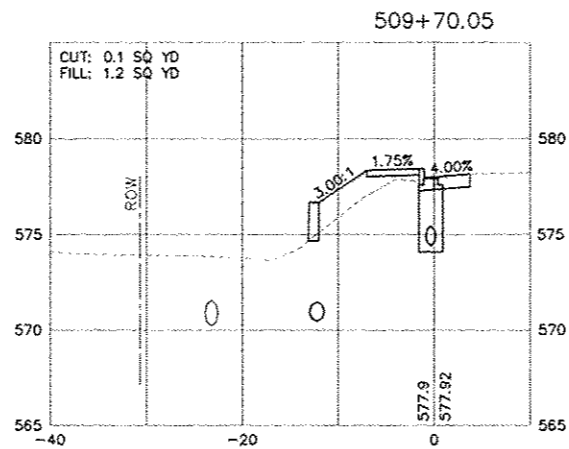
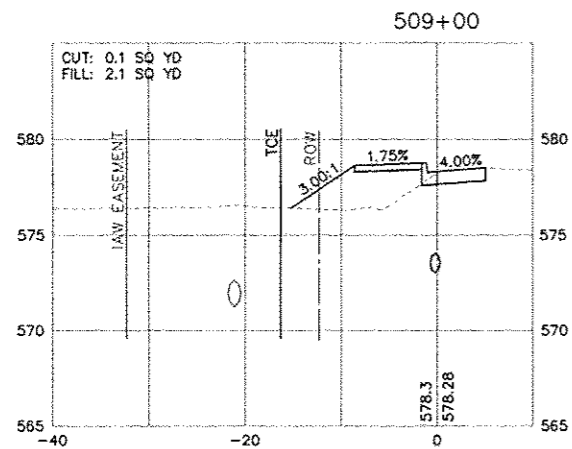
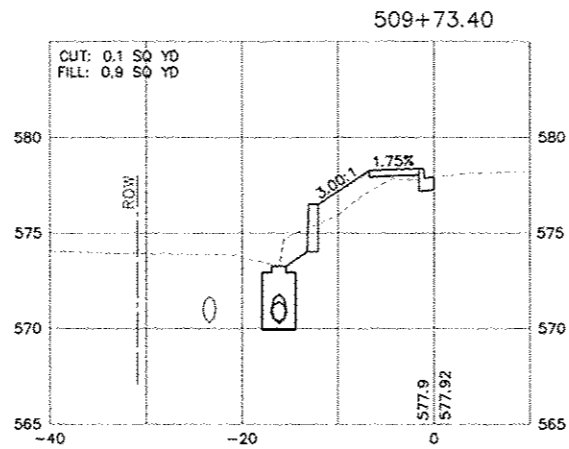
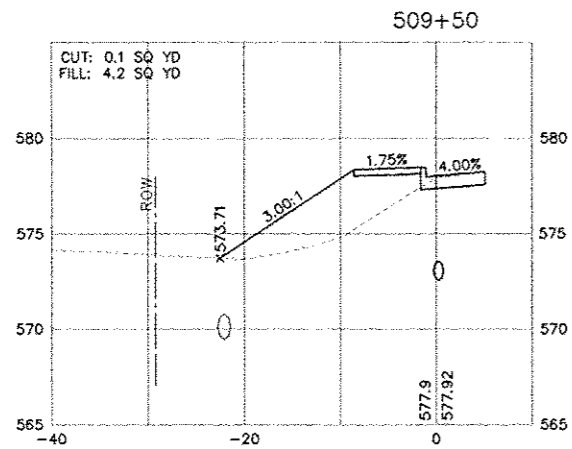
REV.	DATE	DESCRIP
△		
△		
△		
△		
△		

CROSS SECTIONS

SHEET TITLE:

PROJECT TITLE:
LEBANON AVE. PEDESTRIAN FACILITY.
VILLAGE OF SHILOH
ST. CLAIR COUNTY, IL

DESIGNED BY: JLT	SHEET
DRAWN BY: TJH	11
CHECKED BY: LDC	
DATE OF PRELIMINARY: 6/24/2016	
DATE OF FINAL: 7/15/2016	
SHEET NO. 11 OF 12 SHEETS	
PROJECT NUMBER 14-1030.01	



FILE: P:\14-1030.01 Shilo - Lebanon Ave Pedestrian Facility\10_040\0400 Sheets\14-1030.01_12.dwg

LAST PLOTTED: 7/14/2016 1:52 PM OPERATOR: JLT

208 East Main Street, Suite 100
Bellefonte, Illinois 62220
618.233.5977 phone
618.233.5977 fax
www.kaskaskiaeng.com

Kaskaskia
Engineering Group, LLC

PROFESSIONAL REGISTRATIONS
Illinois Professional Design Firm
Professional Engineering Group

LICENSE NO.
184-004773
20-5080586

CONTRACT NO. 07636
SEC. NO. 15-00018-00-SW

REV.	DATE	DESCRIP
△		
△		
△		
△		
△		

CROSS SECTIONS

PROJECT TITLE:
LEBANON AVE. PEDESTRIAN FACILITY
VILLAGE OF SHILOH
ST. CLAIR COUNTY, IL

SHEET TITLE:

DESIGNED BY: JLT	SHEET
DRAWN BY: TJH	12
CHECKED BY: LDC	
DATE OF PRELIMINARY: 6/24/2016	
DATE OF FINAL: 7/15/2016	
SHEET NO. 12 OF 12 SHEETS	
PROJECT NUMBER 14-1030.01	