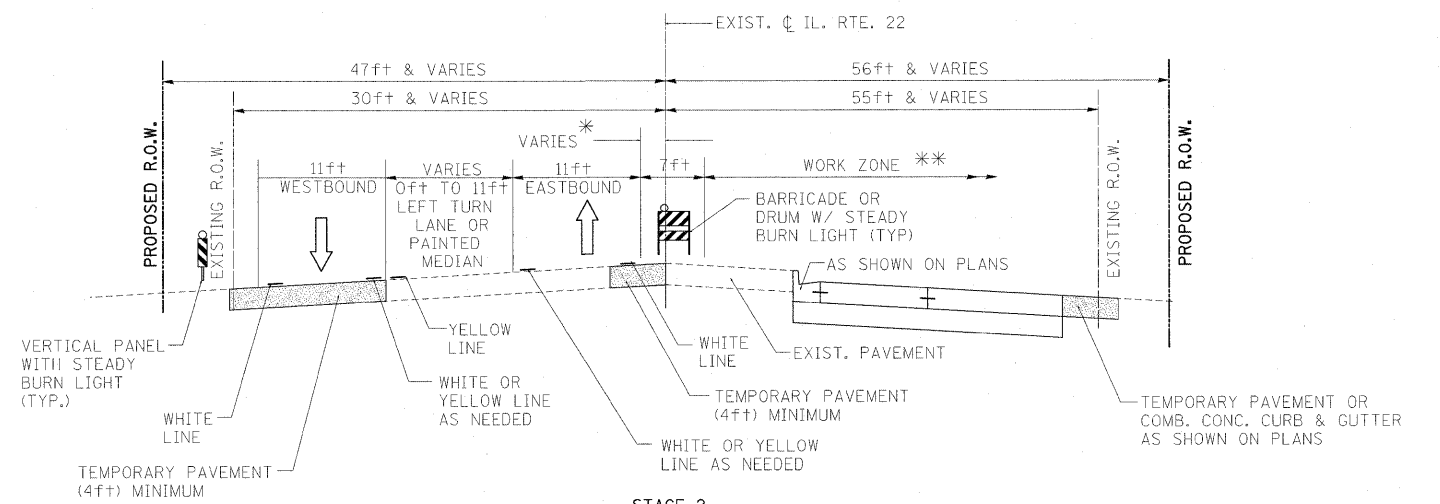
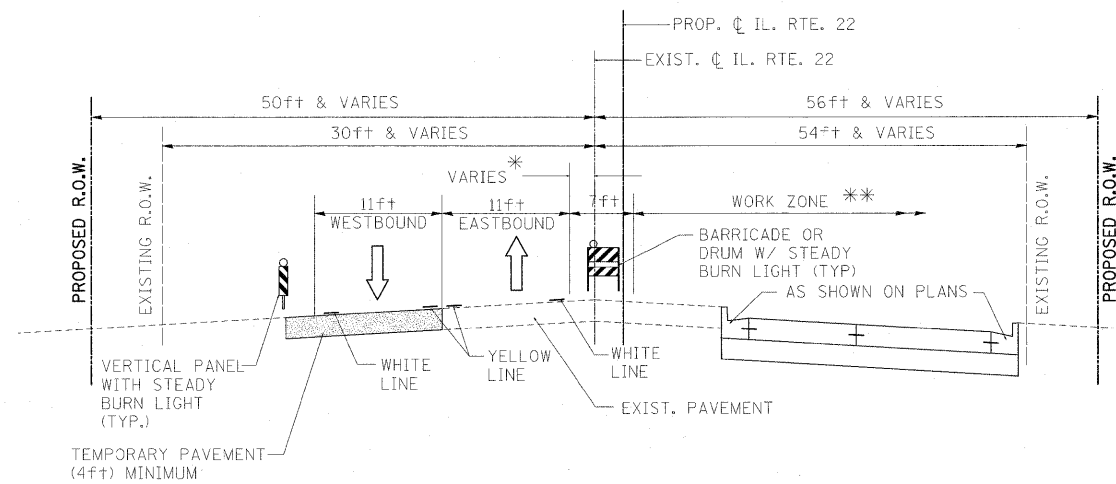


STAGE 2
STA. ±46+48 TO STA. ±57+15



STAGE 2
STA. ±71+10 TO STA. ±81+75
STA. ±93+24 TO STA. ±112+92
STA. ±139+09 TO STA. ±173+95



STAGE 2
STA. ±57+14 TO STA. ±71+10
STA. ±81+75 TO STA. ±93+24
STA. ±112+92 TO STA. ±115+13

PROJECT OMISSION: STA. 115+12.03 TO
STA. 139+09.88

* SEE PLAN VIEW FOR LOCATION
** UTILIZE WORK ZONE TO COMPLETE MAXIMUM AMOUNT OF PAVEMENT AND MEDIAN

| | | | | | | | | | | | | |
|--|--------------------|-------------------|-----------|---|--|-------|----------------------------|---------|--------------|--------------|--------------------|--|
| FILE NAME = | USER NAME = #USER# | DESIGNED - LP | REVISED - | STATE OF ILLINOIS DEPARTMENT OF TRANSPORTATION | IL. ROUTE 22 MAINTENANCE OF TRAFFIC TYPICAL SECTIONS, STAGE 2 | | F.A.P. RTE. | SECTION | COUNTY | TOTAL SHEETS | SHEET NO. | |
| W:\ILRTE22\2009 REVISIONS\CADD Sheets\160860-shr-staging-typr001.dgn | | DRAWN - DC | REVISED - | | 337 | 20R-4 | LAKE | 232 | 36 | | | |
| PLOT SCALE = #SCALE# | | CHECKED - JP | REVISED - | | SCALE: NTS | | SHEET NO. 36 OF 232 SHEETS | | STA. TO STA. | | CONTRACT NO. 60860 | |
| PLOT DATE = 5/15/2010 | | DATE - 05/14/2010 | REVISED - | | ILLINOIS FED. AID PROJECT | | | | | | | |