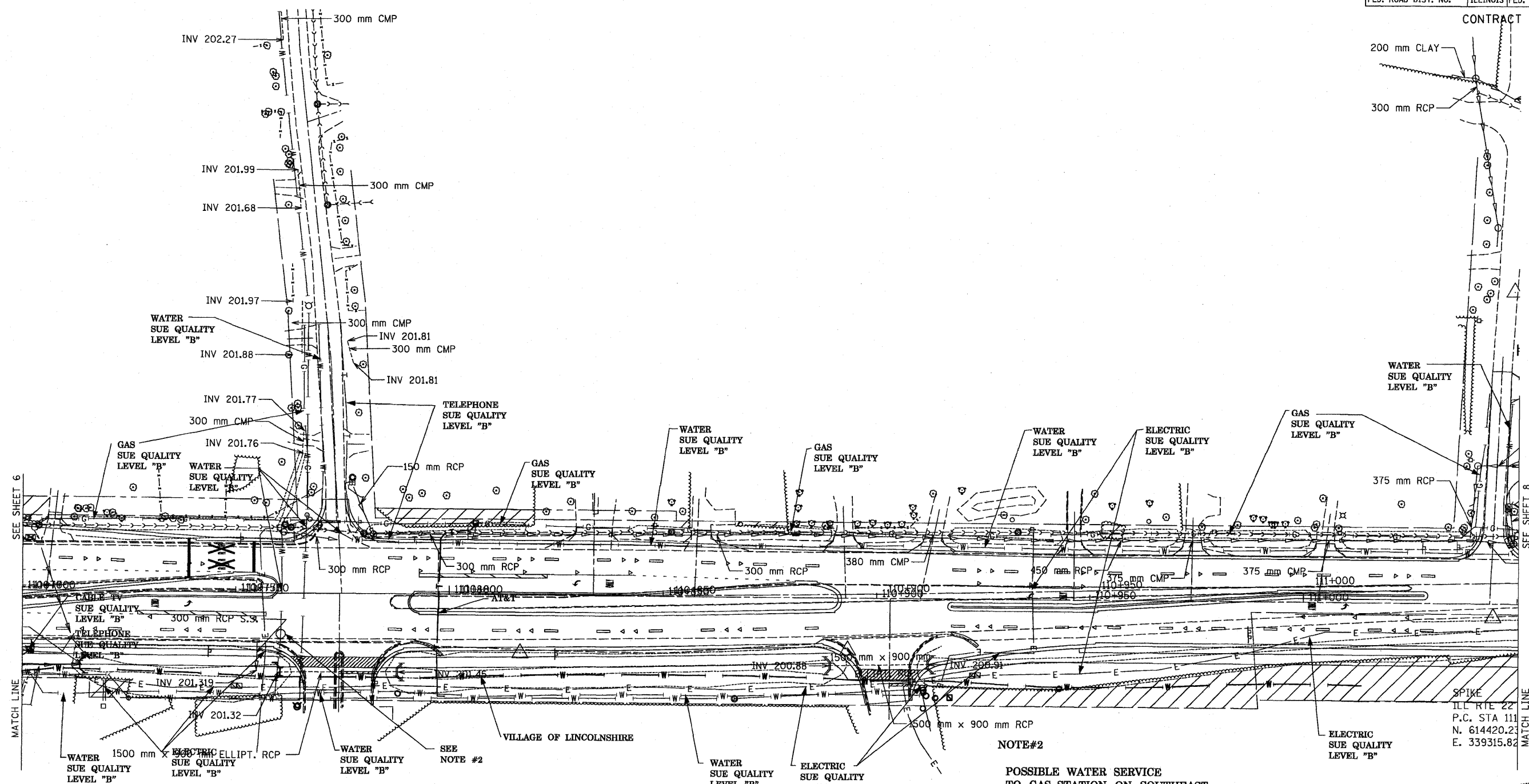


F.A.P. RTE.	SECTION	COUNTY	TOTAL SHEETS	SHEET NO.
337	20R-4	LAKE	232	109F
STA.	TO STA.			
FED. ROAD DIST. NO.	ILLINOIS	FED. AID PROJECT		

CONTRACT NO. 60860



SEE SHEET 6

SEE SHEET 8

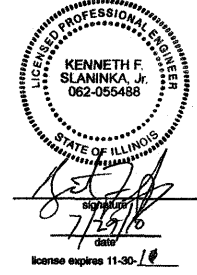
MATCH LINE

MATCH LINE

— T — T —	TELEPHONE
— W — W —	WATER
— G — G —	GAS
— CTV — CTV — CTV	CABLE TELEVISION
— FO — FO — FO	FIBER OPTIC
— E — E —	ELECTRIC

NOTE#2
POSSIBLE WATER SERVICE
TO GAS STATION ON SOUTHEAST
CORNER OF RT 22 AND WASKEGAN RD.

FOR SUE INFORMATION ONLY



TBE GROUP, INC.
 CIVIL ENGINEERING * TRANSPORTATION * ENVIRONMENTAL
 * PLANNING * UTILITY ENGINEERING * LOCATING
 SOUTHERN REGION: FL, GA, SC, NC
 NORTHERN REGION: IL, IN, MI, OH, MD, NJ, NY
 PA, VA, CANADA
 WESTERN REGION: AZ, NV, NM, TX, CA, OR, UT, WA
 SUE Quality Level "B" Completed On: 3/20/02
 Prepared By: JAC QA/QC By: RLC Final QA/QC By: *[Signature]*
 TBE Project No: IL09500117, IL09510404, IL09510418



205 W. WACKER DRIVE
 SUITE 1020
 CHICAGO, IL 60606
 (312) 704-1970

REVISIONS	
NAME	DATE
NEW UTILITIES IN COLOR	7/28/10

ILLINOIS DEPARTMENT OF TRANSPORTATION
 IL RTE. 22
 FROM EAST OF I-94 TO
 WEST OF US-41
 SCALE 1:500 (METRIC UNIT) DRAWN BY
 DATE CHECKED BY