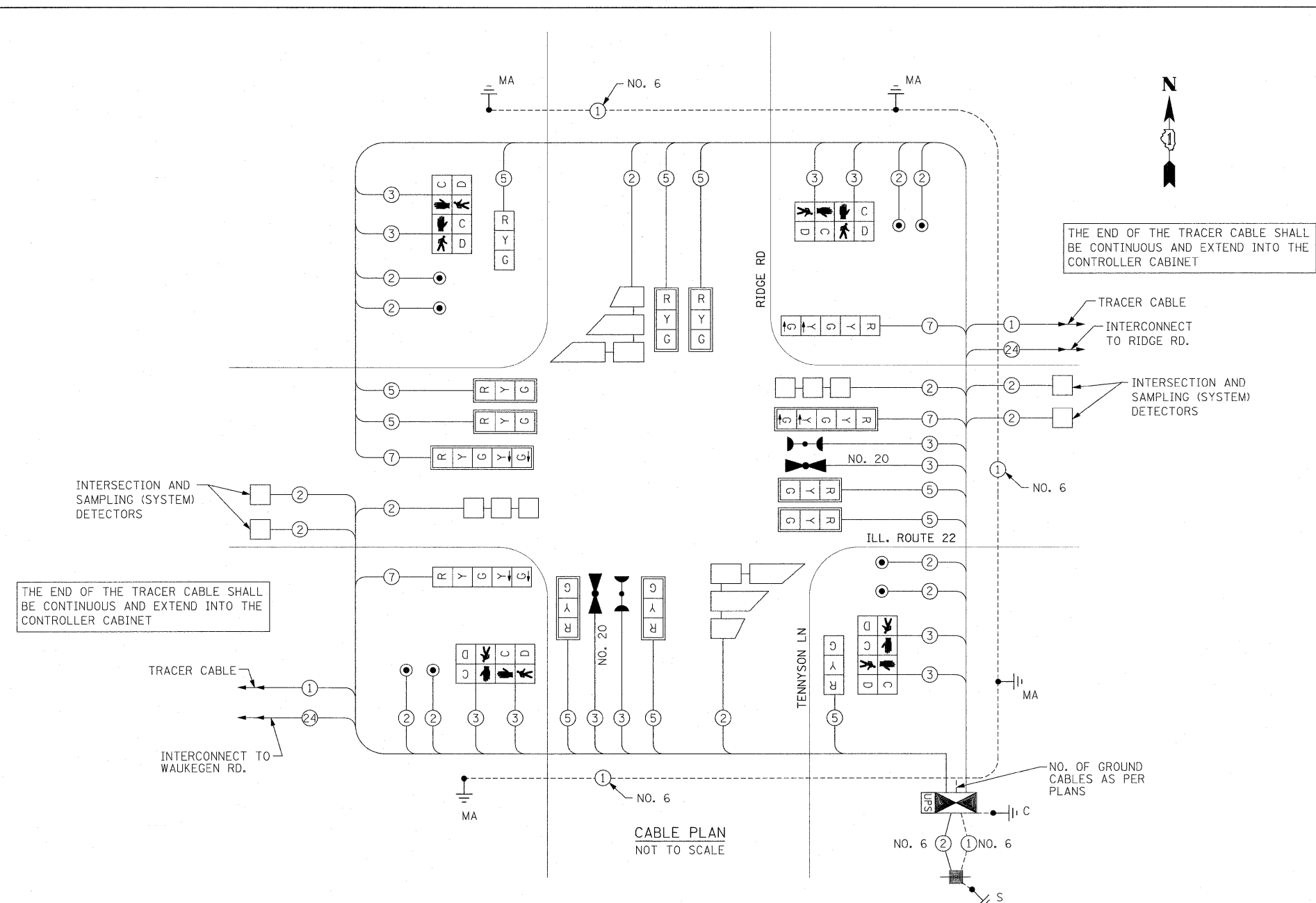


SCHEDULE OF QUANTITIES

ITEM	UNIT	QNTY.
SIGN PANEL - TYPE 1	SQ FT	45
CONDUIT IN TRENCH, 2" DIA., GALVANIZED STEEL	FOOT	554
CONDUIT IN TRENCH, 3" DIA., GALVANIZED STEEL	FOOT	26
CONDUIT IN TRENCH, 4" DIA., GALVANIZED STEEL	FOOT	12
CONDUIT PUSHED, 2" DIA., GALVANIZED STEEL	FOOT	111
CONDUIT PUSHED, 4" DIA., GALVANIZED STEEL	FOOT	365
HANDHOLE	EACH	4
HEAVY-DUTY HANDHOLE	EACH	2
DOUBLE HANDHOLE	EACH	2
TRENCH AND BACKFILL FOR ELECTRICAL WORK	FOOT	592
FULL-ACTUATED CONTROLLER AND TYPE IV CABINET	EACH	1
TRANSCEIVER - FIBER OPTIC	EACH	1
ELECTRIC CABLE IN CONDUIT, SIGNAL NO. 14 2C	FOOT	1,112
ELECTRIC CABLE IN CONDUIT, SIGNAL NO. 14 3C	FOOT	1,422
ELECTRIC CABLE IN CONDUIT, SIGNAL NO. 14 5C	FOOT	1,735
ELECTRIC CABLE IN CONDUIT, SIGNAL NO. 14 7C	FOOT	694
ELECTRIC CABLE IN CONDUIT, LEAD-IN, NO. 14 1 PAIR	FOOT	2,053
ELECTRIC CABLE IN CONDUIT, SERVICE, NO. 6 2 C	FOOT	44
STEEL MAST ARM ASSEMBLY AND POLE, 36 FT.	EACH	1
STEEL MAST ARM ASSEMBLY AND POLE, 44 FT.	EACH	1
STEEL MAST ARM ASSEMBLY AND POLE, 48 FT.	EACH	1
STEEL MAST ARM ASSEMBLY AND POLE, 52 FT.	EACH	1
CONCRETE FOUNDATION, TYPE C	FOOT	4
CONCRETE FOUNDATION, TYPE E 36-INCH DIAMETER	FOOT	52
SIGNAL HEAD, LED, 1-FACE, 3-SECTION, MAST-ARM MOUNTED	EACH	8
SIGNAL HEAD, LED, 1-FACE, 3-SECTION, BRACKET MOUNTED	EACH	2
SIGNAL HEAD, LED, 1-FACE, 5-SECTION, BRACKET MOUNTED	EACH	2
SIGNAL HEAD, LED, 1-FACE, 5-SECTION, MAST-ARM MOUNTED	EACH	2
PEDESTRIAN SIGNAL HEAD, LED, 2-FACE, BRACKET MOUNTED WITH COUNTDOWN TIMER	EACH	4
TRAFFIC SIGNAL BACKPLATE, LOUVERED, ALUMINUM	EACH	10
INDUCTIVE LOOP DETECTOR	EACH	8
DETECTOR LOOP, TYPE I	FOOT	689
PEDESTRIAN PUSH-BUTTON	EACH	8
TEMPORARY TRAFFIC SIGNAL INSTALLATION	EACH	1
** RELOCATE EXISTING EMERGENCY VEHICLE PRIORITY SYSTEM, DETECTOR UNIT	EACH	2
** RELOCATE EXISTING EMERGENCY VEHICLE PRIORITY SYSTEM, PHASING UNIT	EACH	1
REMOVE EXISTING TRAFFIC SIGNAL EQUIPMENT	EACH	1
REMOVE EXISTING HANDHOLE	EACH	8
REMOVE EXISTING CONCRETE FOUNDATION	EACH	9
TEMPORARY TRAFFIC SIGNAL TIMING	EACH	1
SERVICE INSTALLATION - POLE MOUNTED	EACH	1
UNINTERRUPTIBLE POWER SUPPLY	EACH	1
ELECTRIC CABLE IN CONDUIT, GROUNDING, NO. 6 1C	FOOT	461
** ELECTRIC CABLE IN CONDUIT NO. 20 3/C, TWISTED, SHIELDED	FOOT	258

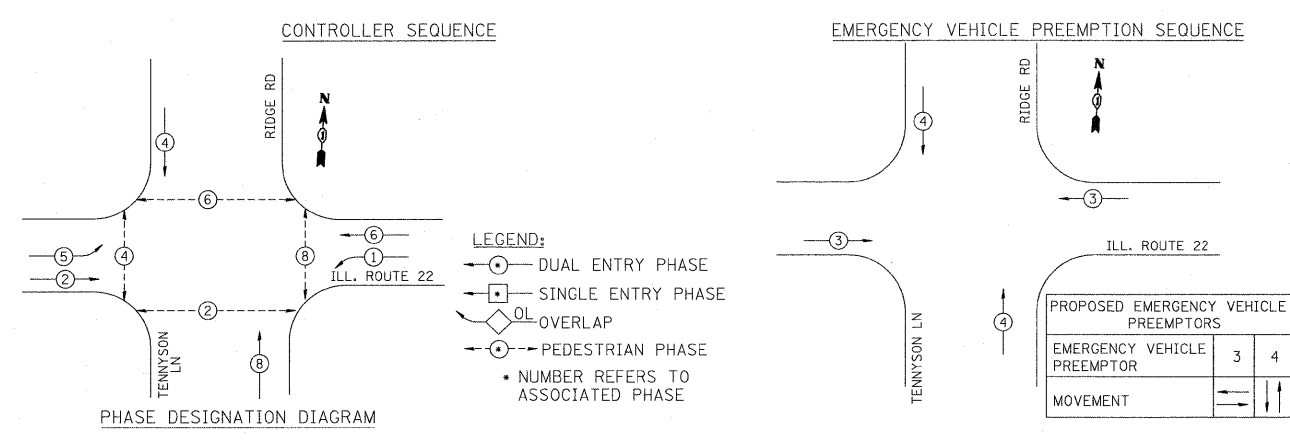
** 100 % COST TO VILLAGE OF HIGHLAND PARK



I.D.O.T. TRAFFIC SIGNAL INSTALLATION ELECTRICAL SERVICE REQUIREMENTS					TOTAL WATTAGE
TYPE	NO. LAMPS	WATTAGE INCAND	LED	% OPERATION	
SIGNAL (RED)	14		17	0.50	119
(YELLOW)	14		25	0.25	87.5
(GREEN)	14		15	0.25	52.5
ARROW	8		12	0.10	9.6
PED. SIGNAL	8		25	1.00	200
CONTROLLER	1		100	1.00	100
ILLUM. SIGN			25	0.05	
FLASHER			25	0.50	
TOTAL =					568.6

ENERGY COST TO: Illinois Department of Transportation
Division of Highways / District 1
201 W Center Court / Schaumburg, Illinois 60196-1096

ENERGY SUPPLY: CONTACT: MR. VARUGHESSE SAMUEL
PHONE: 847-816-5291
COMPANY: ComEd



THE TRAFFIC SIGNAL CONTROL EQUIPMENT FOR THIS PROJECT SHALL BE "ECONOLITE" TO MATCH THE EXISTING ADJACENT SYSTEM.

RESTORATION OF WORK AREA, RESTORATION OF THE TRAFFIC SIGNAL WORK AREA SHALL BE INCIDENTAL TO THE RELATED PAY ITEM SUCH AS FOUNDATION, CONDUIT, HANDHOLE, TRENCH AND BACKFILL, ETC., AND NO EXTRA COMPENSATION SHALL BE ALLOWED. ALL ROADWAY SURFACES SUCH AS SHOULDERS, MEDIANS, SIDEWALKS, PAVEMENT, ETC. SHALL BE REPLACED IN KIND. ALL DAMAGE TO MOWED LAWNS SHALL BE REPLACED WITH AN APPROVED SOD, AND ALL DAMAGE TO UNMOWED FIELDS SHALL BE SEEDING IN ACCORDANCE WITH STANDARD SPECIFICATIONS 252 AND 250 RESPECTIVELY.