

STATE OF ILLINOIS
DEPARTMENT OF TRANSPORTATION

NOTES

D1 denotes interior diaphragm.

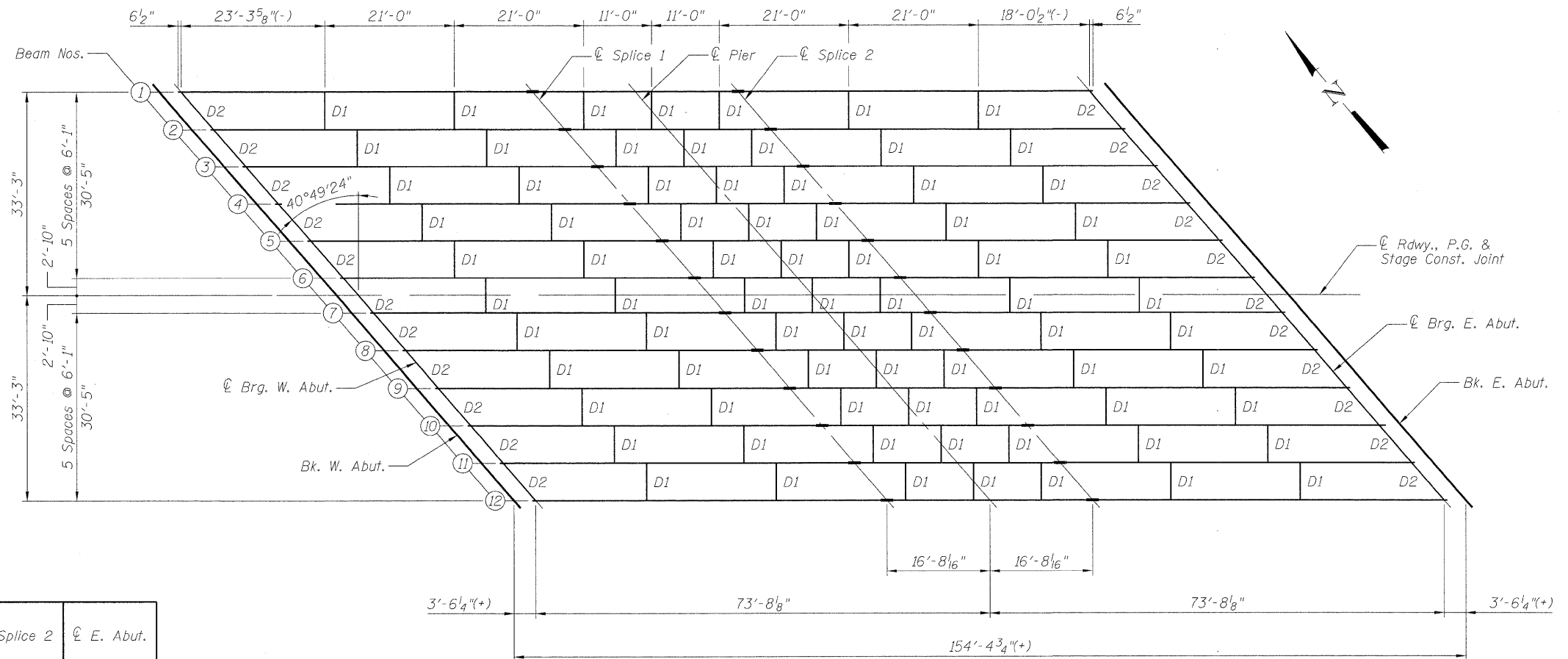
D2 denotes diaphragm at abutments.

See Sheet 23 of 42 for Field Splice and Diaphragm Details.

Wide flange beams shall be M270 Grade 50 Steel.

All cross frames or diaphragms shall be installed as steel is erected and secured with erection pins and bolts except as otherwise noted. Individual cross frames or diaphragms at supports may be temporarily disconnected to install bearing anchor rods.

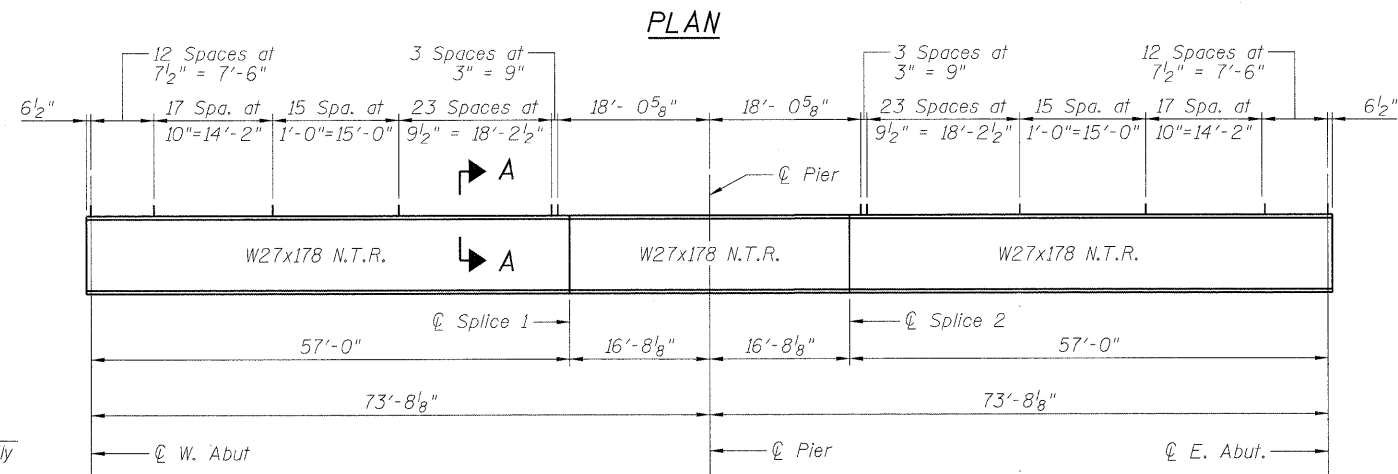
All structural steel shall be hot dip galvanized in accordance with the Special Provision for "Hot Dip Galvanizing for Structural Steel."



*** TOP OF BEAM ELEVATIONS**

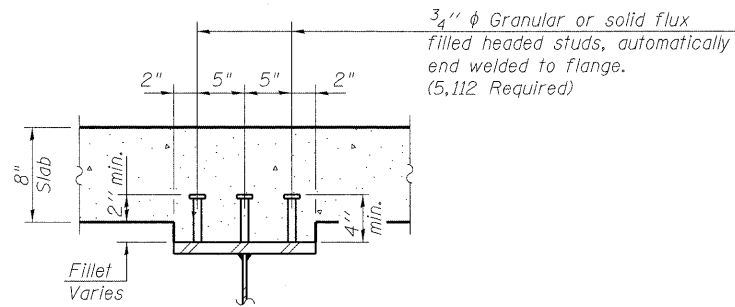
| Location | W. Abut. | Splice 1 | Pier | Splice 2 | E. Abut. |
|-----------------|----------|----------|---------|----------|----------|
| Beam # 1 Elev. | 611.132 | 611.282 | 611.277 | 611.268 | 610.995 |
| Beam # 2 Elev. | 611.272 | 611.414 | 611.394 | 611.375 | 611.068 |
| Beam # 3 Elev. | 611.411 | 611.538 | 611.508 | 611.479 | 611.138 |
| Beam # 4 Elev. | 611.552 | 611.659 | 611.619 | 611.580 | 611.205 |
| Beam # 5 Elev. | 611.696 | 611.776 | 611.727 | 611.678 | 611.268 |
| Beam # 6 Elev. | 611.852 | 611.891 | 611.832 | 611.773 | 611.329 |
| Beam # 7 Elev. | 611.874 | 611.882 | 611.813 | 611.745 | 611.263 |
| Beam # 8 Elev. | 611.773 | 611.747 | 611.668 | 611.590 | 611.077 |
| Beam # 9 Elev. | 611.669 | 611.609 | 611.520 | 611.432 | 610.893 |
| Beam # 10 Elev. | 611.562 | 611.468 | 611.369 | 611.271 | 610.713 |
| Beam # 11 Elev. | 611.452 | 611.323 | 611.215 | 611.105 | 610.534 |
| Beam # 12 Elev. | 611.339 | 611.176 | 611.054 | 610.933 | 610.354 |

*Elevations are before any deflections and are to be used for fabrication only.



BEAM ELEVATION

Load carrying components designated "NTR" shall conform to the Supplemental Requirements for Notch Toughness, Zone 2.



SECTION A-A

| |
|----------------|
| DESIGNED - ASP |
| CHECKED - WSP |
| DRAWN - BEM |
| CHECKED - ASP |

**FRAMING PLAN
STRUCTURE NUMBER 016-0610**

DLZ 85 W. Algonquin Rd. Ste. 220
Arlington Heights IL 60005
(847)-640-0840

| | | | | | |
|---------------------------------|--------------------|--------------------|----------------|------------------------|--------------------|
| SHEET NO. 22 OF 42 SHEETS | F.A. RTE. 94 | SECTION 0101.8B | COUNTY COOK | TOTAL SHEETS 139 | SHEET NO. 98 |
| | CONTRACT NO. 60C18 | | | | |
| ILLINOIS FED. AID PROJECT | | | | | |