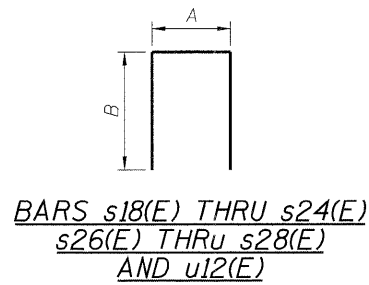
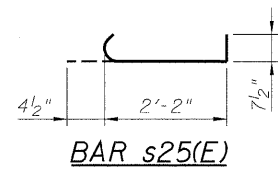
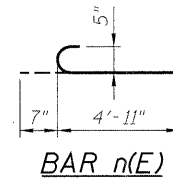
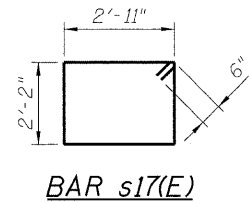


STATE OF ILLINOIS
DEPARTMENT OF TRANSPORTATION



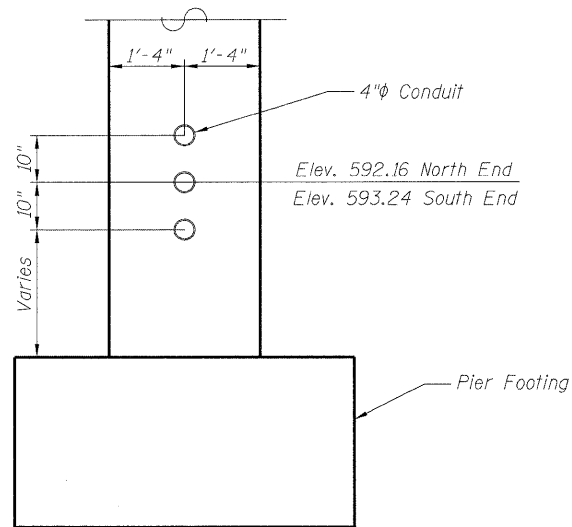
BARS s18(E) THRU s24(E)
s26(E) THRU s28(E)
AND u12(E)

A & B DIMENSIONS

Bar	A	B
s18(E)	2'-2"	2'-1"
s19(E)	2'-2"	2'-3"
s20(E)	2'-2"	2'-7"
s21(E)	2'-2"	2'-4"
s22(E)	2'-2"	1'-11"
s23(E)	2'-2"	1'-6"
s24(E)	2'-2"	3'-5"
s26(E)	2'-4"	3'-3"
s27(E)	2'-4"	7'-4"
s28(E)	2'-4"	5'-6"
u12(E)	2'-2"	3'-3"

BILL OF MATERIAL

Bar	No.	Size	Length	Shape
h47(E)	8	4	24'-11"	—
h48(E)	8	4	22'-11"	—
h49(E)	36	9	25'-4"	—
h50(E)	36	9	24'-1"	—
n(E)	84	5	5'-6"	U
p(E)	8	11	21'-8"	—
p1(E)	4	6	37'-5"	—
p2(E)	4	6	33'-5"	—
p3(E)	4	4	25'-6"	—
p4(E)	4	4	17'-6"	—
p5(E)	4	4	21'-6"	—
p6(E)	4	10	42'-6"	—
p7(E)	4	10	38'-6"	—
p8(E)	8	10	5'-0"	—
s17(E)	67	5	11'-2"	U
s18(E)	6	5	6'-4"	U
s19(E)	6	5	6'-8"	U
s20(E)	6	5	7'-4"	U
s21(E)	6	5	6'-10"	U
s22(E)	2	5	6'-0"	U
s23(E)	54	5	5'-2"	U
s24(E)	96	4	9'-0"	U
s25(E)	48	4	3'-2"	U
s26(E)	18	5	8'-10"	U
s27(E)	98	5	17'-0"	U
s28(E)	98	5	13'-4"	U
t2(E)	108	7	5'-7"	—
u12(E)	6	5	8'-8"	U
v40(E)	84	5	9'-4"	—
w6(E)	14	7	8'-0"	—
w7(E)	14	4	21'-11"	—
w8(E)	14	4	20'-8"	—
Structure Excavation		Cu. Yd.	153	
Concrete Structures		Cu. Yd.	173.8	
Reinforcement Bars, Epoxy Coated		Pound	17,802	
Bar Splicers		Each	41	
Furnishing Steel Piles, HP 12 x 53		Foot	1,313	
Driving Piles		Foot	1,313	
Test Pile, Steel HP 12 x 53		Each	1	
Concrete Sealer		Sq. Ft.	2,647	



CONDUIT DETAIL

Note: Cost of conduit included in Concrete Structures.

DESIGNED - ASP
CHECKED - DPW
DRAWN - LNB
CHECKED - ASP

DLZ DLZ Illinois, Inc.
85 W. Algonquin Rd. Ste. 220
Arlington Heights IL 60005
(847)-640-0840

SHEET NO. 32 OF 42 SHEETS	F.A. RTE.	SECTION	COUNTY	TOTAL SHEETS	SHEET NO.
	94	0101.8B	COOK	139	108
CONTRACT NO. 60C18					
ILLINOIS FED. AID PROJECT					

PIER II
STRUCTURE NUMBER 016-0610