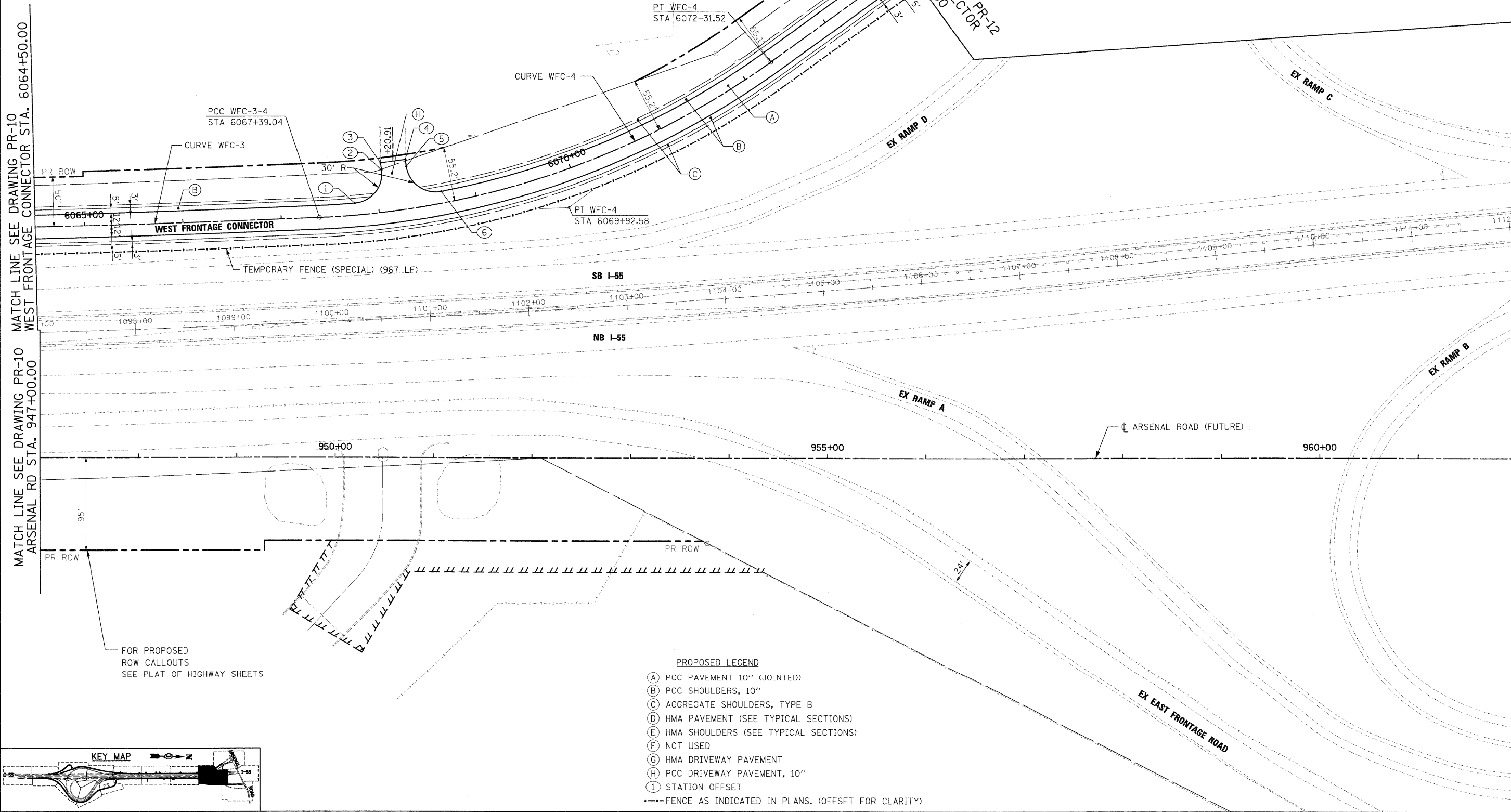


NO.	STATION	OFFSET
①	6067+75.96	12.00' LT
②	6068+07.54	43.04' LT
③	6068+07.42	50.19' LT
④	6068+34.47	50.19' LT
⑤	6068+34.34	43.04' LT
⑥	6068+65.93	11.99' LT

NOTE:
FOR CURVE DATA, SUPERELEVATION AND TRANSITION RATES
SEE ALIGNMENTS, TIES AND BENCHMARKS
DRAWING NOS. AT-1 TO AT-7

FOR PROPOSED ROW CALLOUTS
SEE PLAT OF HIGHWAY SHEETS



MATCH LINE SEE DRAWING PR-10 WEST FRONTAGE CONNECTOR STA. 6064+50.00

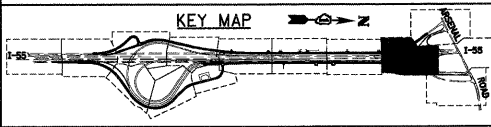
MATCH LINE SEE DRAWING PR-10 ARSENAL RD STA. 947+00.00

MATCH LINE SEE DRAWING PR-13 ARSENAL RD STA. 962+00.00

FOR PROPOSED ROW CALLOUTS
SEE PLAT OF HIGHWAY SHEETS

- PROPOSED LEGEND**
- (A) PCC PAVEMENT 10" (JOINTED)
 - (B) PCC SHOULDERS, 10"
 - (C) AGGREGATE SHOULDERS, TYPE B
 - (D) HMA PAVEMENT (SEE TYPICAL SECTIONS)
 - (E) HMA SHOULDERS (SEE TYPICAL SECTIONS)
 - (F) NOT USED
 - (G) HMA DRIVEWAY PAVEMENT
 - (H) PCC DRIVEWAY PAVEMENT, 10"
 - (I) STATION OFFSET
 - FENCE AS INDICATED IN PLANS. (OFFSET FOR CLARITY)

KEY MAP



McDonough Associates Inc.
Engineers / Architects
130 East Randolph Street, Chicago, Illinois 60601

FILE NAME = D:\60C31-SHT-PLAN11.dgn	USER NAME = TKI\jgsl	DESIGNED - JTF	REVISED -
PLOT SCALE = 1:50		DRAWN - JTF	REVISED -
PLOT DATE = 12/14/2009		CHECKED - DLT	REVISED -
		DATE - 12/18/09	REVISED -

**STATE OF ILLINOIS
DEPARTMENT OF TRANSPORTATION**

PROPOSED PLAN

SCALE: 1"=50' SHEET NO. 11 OF 15 SHEETS STA. TO STA.

F.A.I. RTE.	SECTION	COUNTY	TOTAL SHEETS	SHEET NO.
55	(99-1&2)AC-3	WILL	524	63
CONTRACT NO. 60C31				
FED. ROAD DIST. NO. 1 ILLINOIS FED. AID PROJECT				

FINAL