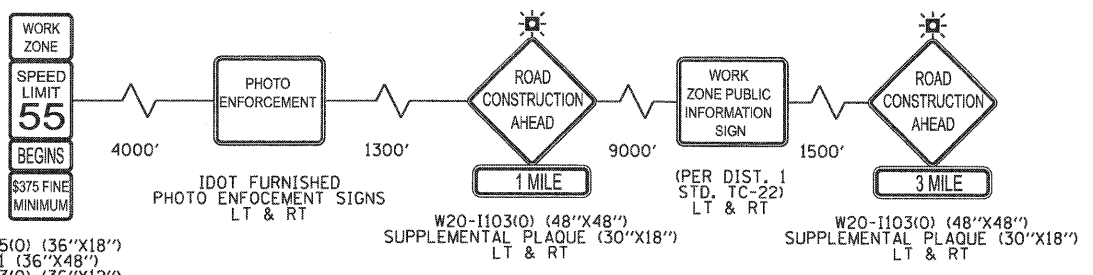


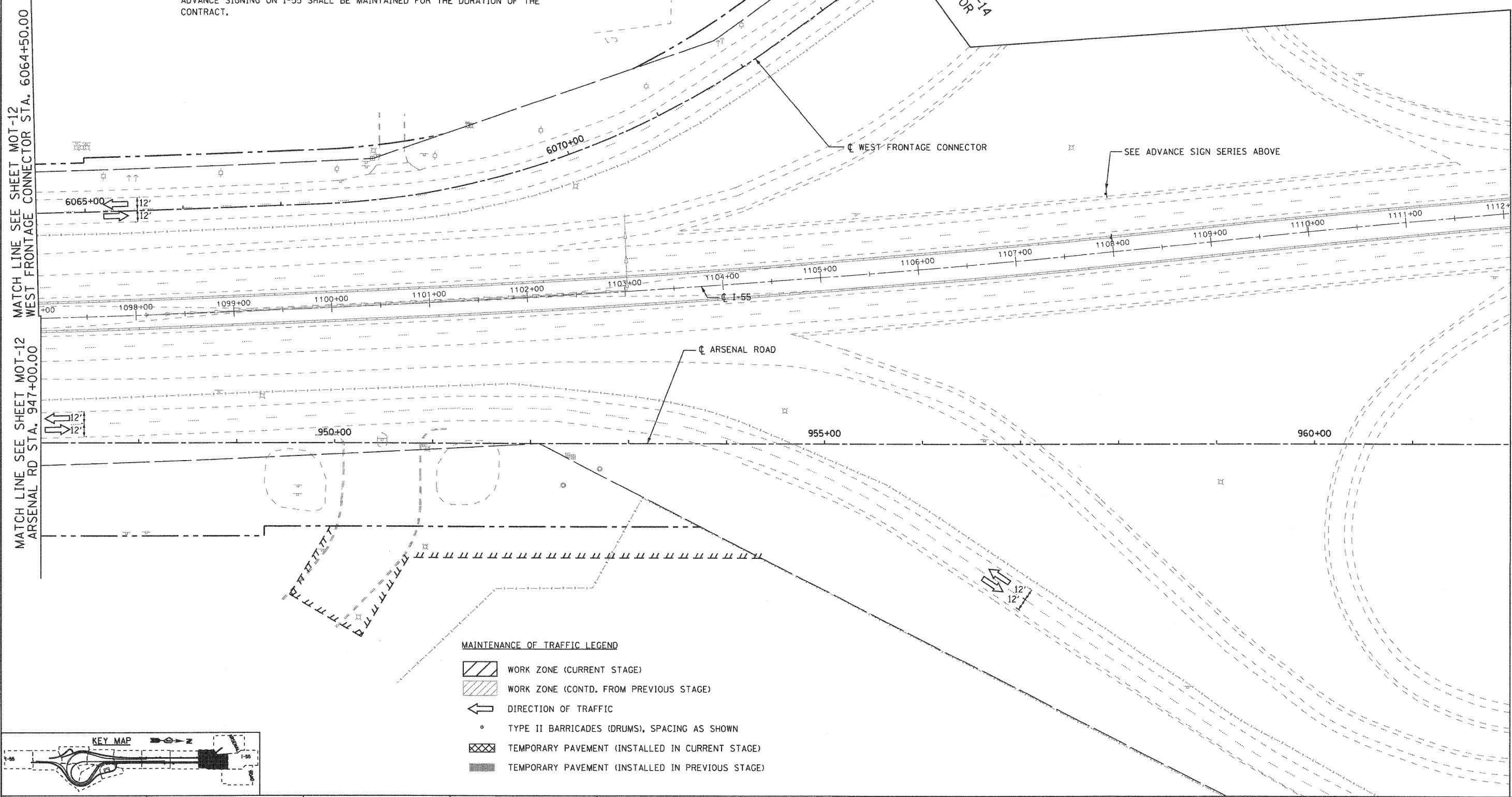
EJM ENGINEERING, INC.
 411 South Wells Street Suite 800
 Chicago, Illinois 60607



W2-1115(O) (36"x18")
 R2-1 (36"x48")
 W2-1113(O) (36"x12")
 R2-1106 (36"x18")
 LT & RT
 STA. 1108+00

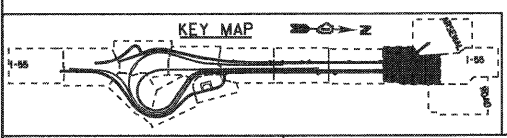
NOTE

ADVANCE SIGNING ON I-55 SHALL BE MAINTAINED FOR THE DURATION OF THE CONTRACT.



MAINTENANCE OF TRAFFIC LEGEND

- WORK ZONE (CURRENT STAGE)
- WORK ZONE (CONTD. FROM PREVIOUS STAGE)
- DIRECTION OF TRAFFIC
- TYPE II BARRICADES (DRUMS), SPACING AS SHOWN
- TEMPORARY PAVEMENT (INSTALLED IN CURRENT STAGE)
- TEMPORARY PAVEMENT (INSTALLED IN PREVIOUS STAGE)



FILE NAME = ...XD160C31-SHT-STAGING111.dgn	USER NAME = grot	DESIGNED - GR	REVISED -	STATE OF ILLINOIS DEPARTMENT OF TRANSPORTATION	MAINTENANCE OF TRAFFIC STAGE 1			F.A.I. RTE. 55	SECTION (99-1&2)-3	COUNTY WILL	TOTAL SHEETS 524	SHEET NO. 99
	PLOT SCALE = 1/4"=1'	DRAWN - GR	REVISED -		SCALE: 1"=50'	SHEET NO. 11 OF 12 SHEETS	STA.	TO STA.	CONTRACT NO. 60C31			
	PLOT DATE = 12/16/2009	CHECKED - RY	REVISED -		FED. ROAD DIST. NO. 1 ILLINOIS FED. AID PROJECT							
		DATE - 12/18/2009	REVISED -		FINAL							