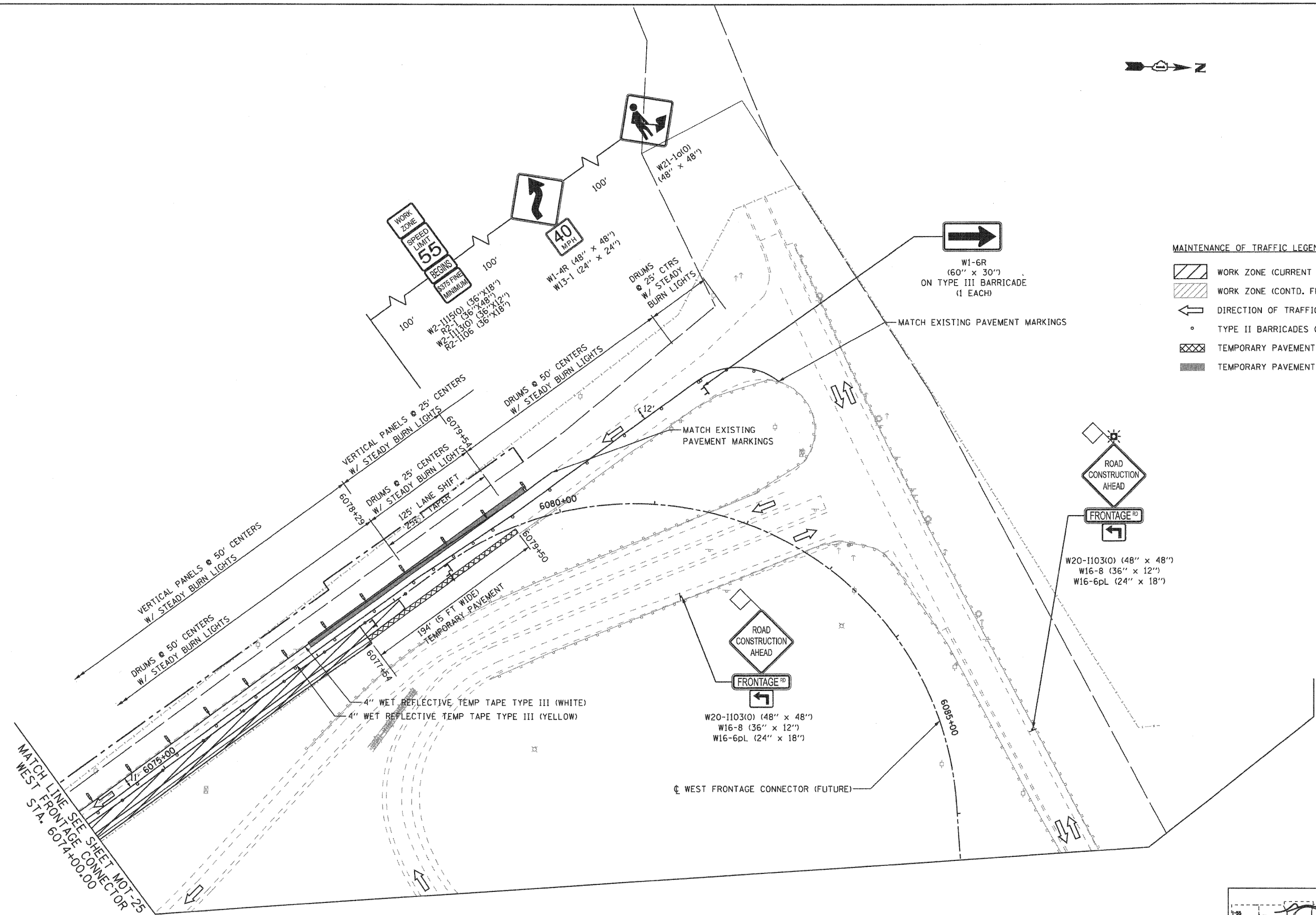
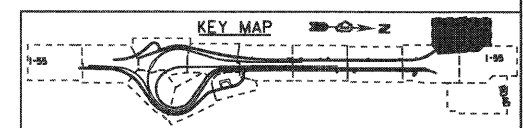


EJM ENGINEERING, INC.
411 South Wells Street Suite 800
Chicago, Illinois 60607



- MAINTENANCE OF TRAFFIC LEGEND**
- WORK ZONE (CURRENT STAGE)
 - WORK ZONE (CONTD. FROM PREVIOUS STAGE)
 - DIRECTION OF TRAFFIC
 - TYPE II BARRICADES (DRUMS), SPACING AS SHOWN
 - TEMPORARY PAVEMENT (INSTALLED IN CURRENT STAGE)
 - TEMPORARY PAVEMENT (INSTALLED IN PREVIOUS STAGE)

MATCH LINE SEE SHEET MOT-25
WEST STA. 6074+00.00



FILE NAME = ...ND160C31-SHT-STAGING212.dgn	USER NAME = gra1	DESIGNED - GR	REVISED -
		DRAWN - GR	REVISED -
		CHECKED - RY	REVISED -
		DATE - 12/18/2009	REVISED -

**STATE OF ILLINOIS
DEPARTMENT OF TRANSPORTATION**

**MAINTENANCE OF TRAFFIC
STAGE 2**

SCALE: 1"=50' SHEET NO. 8 OF 8 SHEETS STA. TO STA.

F.A.I. RTE.	SECTION	COUNTY	TOTAL SHEETS	SHEET NO.
55	(99-1&2)-3	WILL	524	112
CONTRACT NO. 60C31			FED. ROAD DIST. NO. 1 (ILLINOIS) FED. AID PROJECT	

FINAL