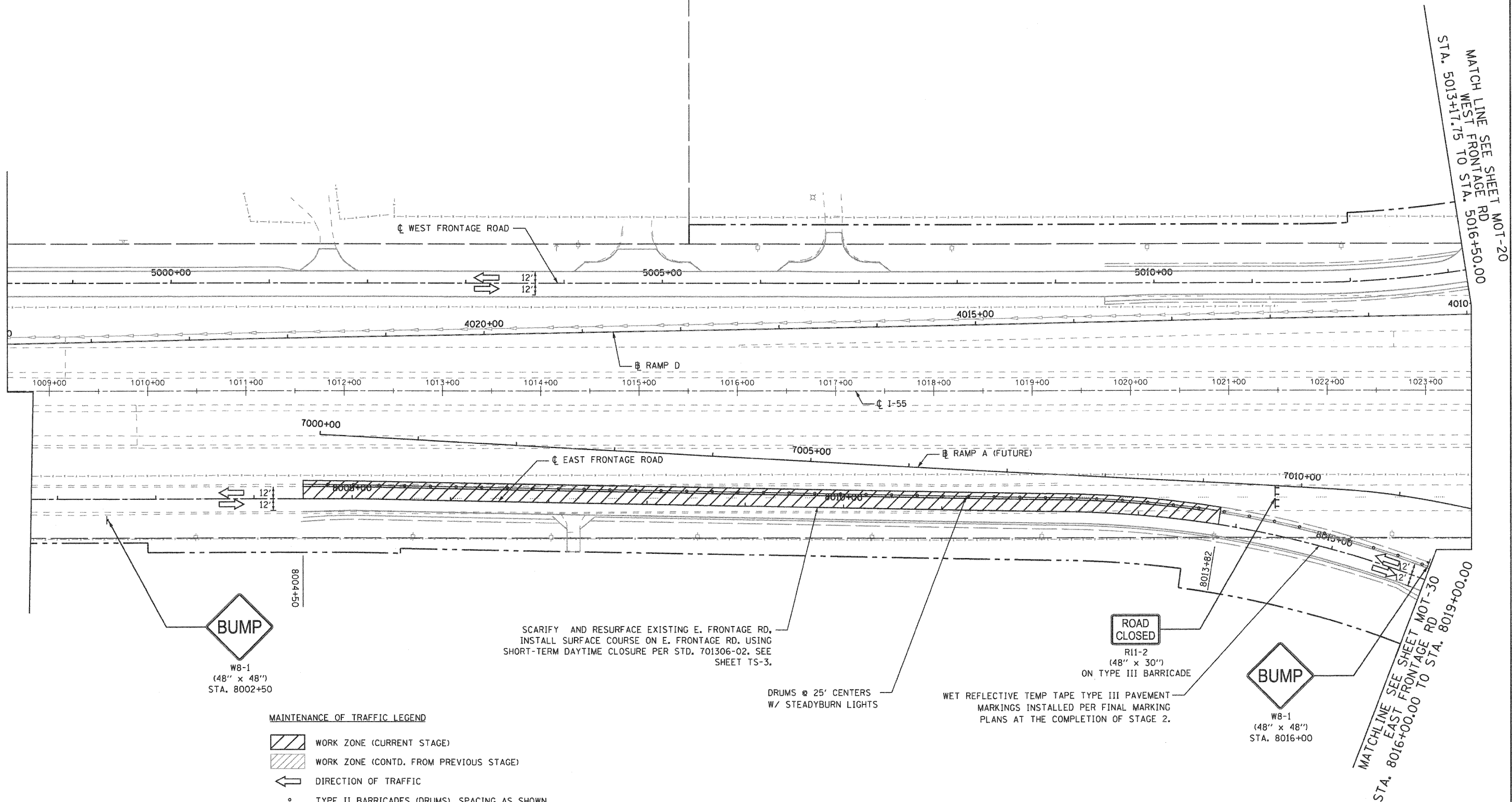


EJM ENGINEERING, INC.
411 South Wells Street Suite 800
Chicago, Illinois 60607



SCARIFY AND RESURFACE EXISTING E. FRONTAGE RD, INSTALL SURFACE COURSE ON E. FRONTAGE RD, USING SHORT-TERM DAYTIME CLOSURE PER STD. 701306-02. SEE SHEET TS-3.

DRUMS @ 25' CENTERS W/ STEADYBURN LIGHTS

WET REFLECTIVE TEMP TAPE TYPE III PAVEMENT MARKINGS INSTALLED PER FINAL MARKING PLANS AT THE COMPLETION OF STAGE 2.

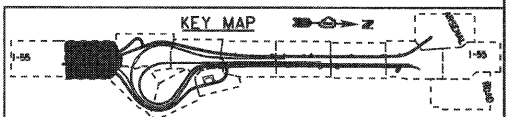
MAINTENANCE OF TRAFFIC LEGEND

- WORK ZONE (CURRENT STAGE)
- WORK ZONE (CONTD. FROM PREVIOUS STAGE)
- DIRECTION OF TRAFFIC
- TYPE II BARRICADES (DRUMS), SPACING AS SHOWN
- TEMPORARY PAVEMENT (INSTALLED IN CURRENT STAGE)
- TEMPORARY PAVEMENT (INSTALLED IN PREVIOUS STAGE)

NOTE:
AT THE COMPLETION OF STAGE 2B, PRIOR TO STAGE 3, INSTALL WET REFLECTIVE TEMP TAPE TYPE III PAVEMENT MARKINGS PER FINAL MARKING PLAN AT W FRONTAGE RD FROM STA. 8004+50 TO STA. 8013+82..

MATCHLINE SEE SHEET MOT-20
WEST FRONTAGE RD
STA. 5013+17.75 TO STA. 5016+50.00

MATCHLINE SEE SHEET MOT-30
EAST FRONTAGE RD
STA. 8016+00.00 TO STA. 8019+00.00



FILE NAME = ...\\D160C31-SHT-STAGING2802.dgn

USER NAME = gra1
PLOT SCALE = 1:50
PLOT DATE = 12/16/2009

DESIGNED - GR
DRAWN - GR
CHECKED - RY
DATE - 12/18/2009

REVISED -
REVISED -
REVISED -
REVISED -

**STATE OF ILLINOIS
DEPARTMENT OF TRANSPORTATION**

**MAINTENANCE OF TRAFFIC
STAGE 2B**

SCALE: 1"=50' SHEET NO. 1 OF 1 SHEETS STA. TO STA.

F.A.I. RTE.	SECTION	COUNTY	TOTAL SHEETS	SHEET NO.
55	(99-1&2)-3	WILL	524	114
FED. ROAD DIST. NO. 1 (ILLINOIS) FED. AID PROJECT			CONTRACT NO. 60C31	

FINAL