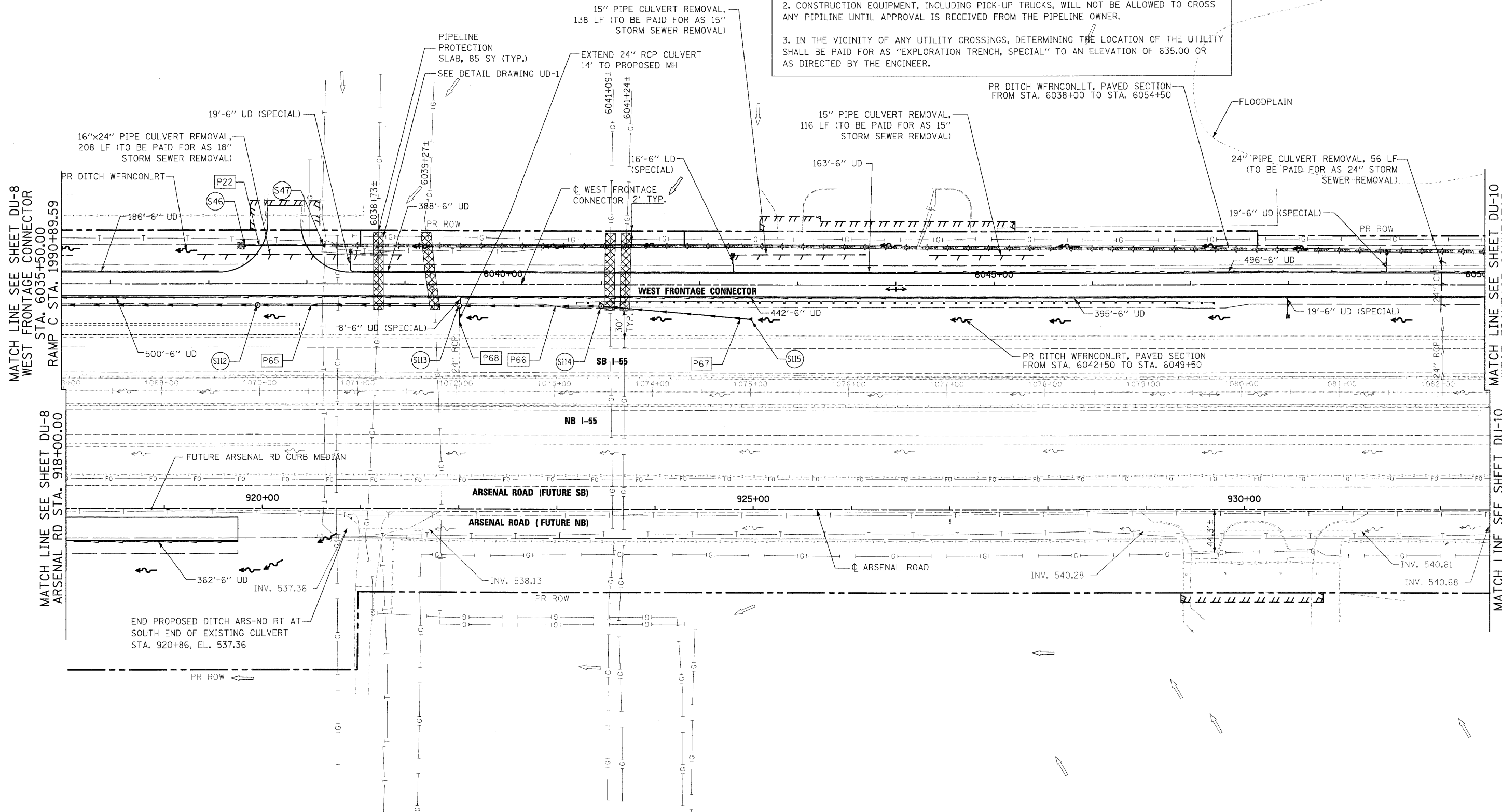
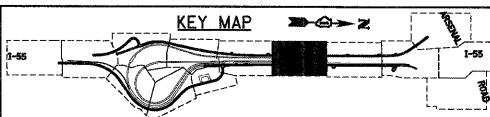


NOTES:

1. AT ALL UTILITY PIPELINE CROSSINGS OR AT LOCATIONS DIRECTED BY THE ENGINEER, ALL EARTH EXCAVATION AND ROCK EXCAVATION SHALL BE PERFORMED WITH HAND TOOLS OR OTHER NONDESTRUCTIVE METHODS APPROVED BY THE ENGINEER OR THE PIPELINE OWNER AS OUTLINED IN THE SPECIAL PROVISION, EXISTING PIPELINE COMPANIES REQUIREMENTS.
2. CONSTRUCTION EQUIPMENT, INCLUDING PICK-UP TRUCKS, WILL NOT BE ALLOWED TO CROSS ANY PIPELINE UNTIL APPROVAL IS RECEIVED FROM THE PIPELINE OWNER.
3. IN THE VICINITY OF ANY UTILITY CROSSINGS, DETERMINING THE LOCATION OF THE UTILITY SHALL BE PAID FOR AS "EXPLORATION TRENCH, SPECIAL" TO AN ELEVATION OF 635.00 OR AS DIRECTED BY THE ENGINEER.



END PROPOSED DITCH ARS-NO RT AT SOUTH END OF EXISTING CULVERT STA. 920+86, EL. 537.36



FILE NAME =	USER NAME = TKluegel
D:\60C31-SHT-DRAIN09.dgn	

DESIGNED -	VP/PTK	REVISED -	
DRAWN -	VP/PTK	REVISED -	
CHECKED -	CL	REVISED -	
PLOT DATE =	12/14/2009	DATE -	12/18/09

DESIGNED -	VP/PTK	REVISED -	
DRAWN -	VP/PTK	REVISED -	
CHECKED -	CL	REVISED -	
DATE -	12/18/09	REVISED -	

STATE OF ILLINOIS
DEPARTMENT OF TRANSPORTATION

DRAINAGE AND UTILITY PLAN

SCALE: 1"=50' SHEET NO. 9 OF 22 SHEETS STA. TO STA.

F.A.I. RTE.	SECTION	COUNTY	TOTAL SHEETS	SHEET NO.
55	(99-1&2)AC-3	WILL	524	152
CONTRACT NO. 60C31				
FED. ROAD DIST. NO. 1 ILLINOIS FED. AID PROJECT				

SINGH & ASSOCIATES, INC.
CONSULTING ENGINEERS
300 W. ADAMS ST.
CHICAGO, IL 60606
TEL: (312) 623-0240
FAX: (312) 623-8449

FINAL