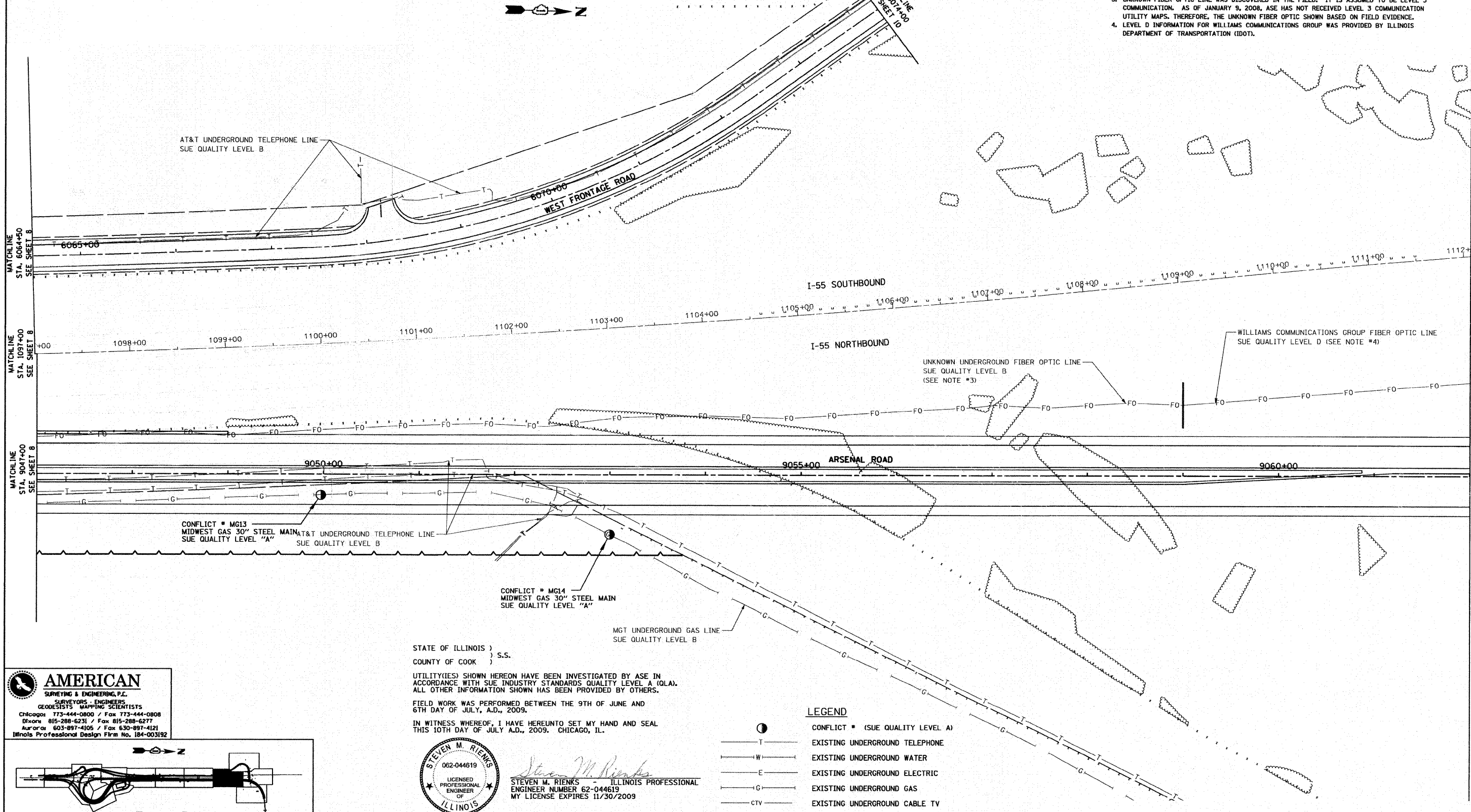


VERIFIED UTILITY INFORMATION - SUE QUALITY LEVEL A

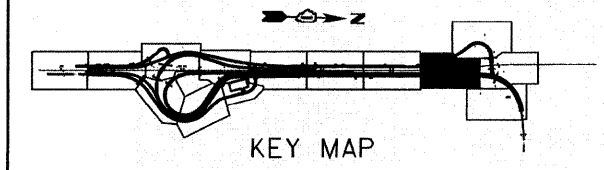
CONFLICT NO.	SIZE / TYPE	NORTHING	EASTING	STATION	OFFSET	TOP OF UTILITY	EXISTING CUT	REFERENCE GROUND ELEV.	COMMENTS
MG13	30" STEEL MAIN	1729012.7250	1022702.7590	1099+92.52	163.38 RT.	546.76	4.68'	551.44	MIDWEST GAS - (NO CASING)
MG14	30" STEEL MAIN	1729316.2900	1022736.6010	1102+88.64	222.63 RT.	547.04	4.25'	551.29	MIDWEST GAS - (NO CASING)

NOTES:

- HORIZONTAL CONTROL, VERTICAL CONTROL, CENTERLINE ALIGNMENT, AND TOPOGRAPHIC FEATURES WERE SUPPLIED BY ILLINOIS DEPARTMENT OF TRANSPORTATION, CONTRACT NUMBER 60C31, DATED NOVEMBER 20, 2008.
- COMCAST DOES NOT HAVE ANY UNDERGROUND FACILITIES WITHIN THE PROJECT LIMITS.
- UNKNOWN FIBER OPTIC LINE WAS DISCOVERED IN THE FIELD. IT IS ASSUMED TO BE LEVEL 3 COMMUNICATION. AS OF JANUARY 9, 2008, ASE HAS NOT RECEIVED LEVEL 3 COMMUNICATION UTILITY MAPS. THEREFORE, THE UNKNOWN FIBER OPTIC SHOWN BASED ON FIELD EVIDENCE.
- LEVEL D INFORMATION FOR WILLIAMS COMMUNICATIONS GROUP WAS PROVIDED BY ILLINOIS DEPARTMENT OF TRANSPORTATION (IDOT).



AMERICAN
SURVEYING & ENGINEERING, P.C.
SURVEYORS, ENGINEERS
GEODESISTS, MAPPING SCIENTISTS
Chicago 773-444-0800 / Fax 773-444-0808
Dixons 815-288-6231 / Fax 815-288-6277
Aurora 603-897-4105 / Fax 630-897-4121
Illinois Professional Design Firm No. 184-003192



STATE OF ILLINOIS)
COUNTY OF COOK) S.S.
UTILITY(IES) SHOWN HEREON HAVE BEEN INVESTIGATED BY ASE IN ACCORDANCE WITH SUE INDUSTRY STANDARDS QUALITY LEVEL A (QLA). ALL OTHER INFORMATION SHOWN HAS BEEN PROVIDED BY OTHERS.
FIELD WORK WAS PERFORMED BETWEEN THE 9TH OF JUNE AND 6TH DAY OF JULY, A.D., 2009.
IN WITNESS WHEREOF, I HAVE HEREUNTO SET MY HAND AND SEAL THIS 10TH DAY OF JULY A.D., 2009. CHICAGO, IL.

STEVEN M. RIENKS
062-044619
LICENSED PROFESSIONAL ENGINEER OF ILLINOIS
STEVEN M. RIENKS - ILLINOIS PROFESSIONAL ENGINEER NUMBER 62-044619
MY LICENSE EXPIRES 11/30/2009

- LEGEND**
- CONFLICT # (SUE QUALITY LEVEL A)
 - T— EXISTING UNDERGROUND TELEPHONE
 - W— EXISTING UNDERGROUND WATER
 - E— EXISTING UNDERGROUND ELECTRIC
 - G— EXISTING UNDERGROUND GAS
 - CTV— EXISTING UNDERGROUND CABLE TV
 - FO— EXISTING UNDERGROUND FIBER OPTIC

FILE NAME =	USER NAME =	DESIGNED -	REVISED -
#FILE#		DRAWN -	REVISED -
	PLOT SCALE = 1"=50'	CHECKED -	REVISED -
	PLOT DATE = 1/16/2009	DATE -	REVISED -

STATE OF ILLINOIS
DEPARTMENT OF TRANSPORTATION

SUE INVESTIGATION OF UNDERGROUND UTILITIES		F.A.I. RTE.	SECTION	COUNTY	TOTAL SHEETS	SHEET NO.
SCALE:	SHEET NO.	OF	SHEETS	STA.	TO STA.	

F.A.I. RTE.	SECTION	COUNTY	TOTAL SHEETS	SHEET NO.
55	99-2HB-2-R	WILL	524	216
CONTRACT NO. 60C31				
FED. ROAD DIST. NO. ILLINOIS FED. AID PROJECT				