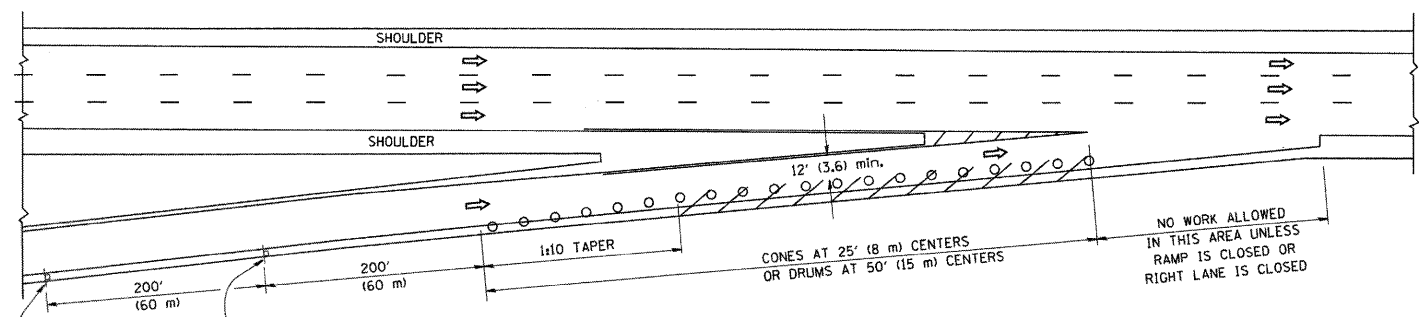
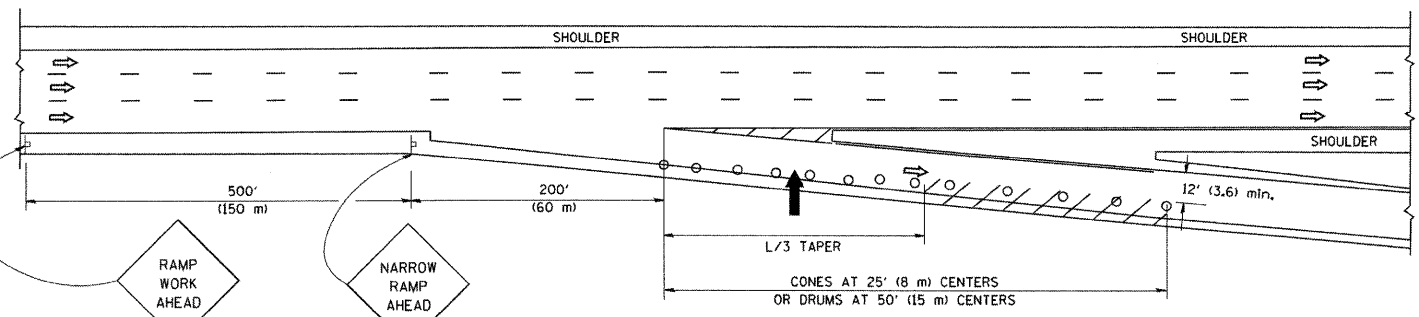


PARTIAL RAMP CLOSURE DETAILS

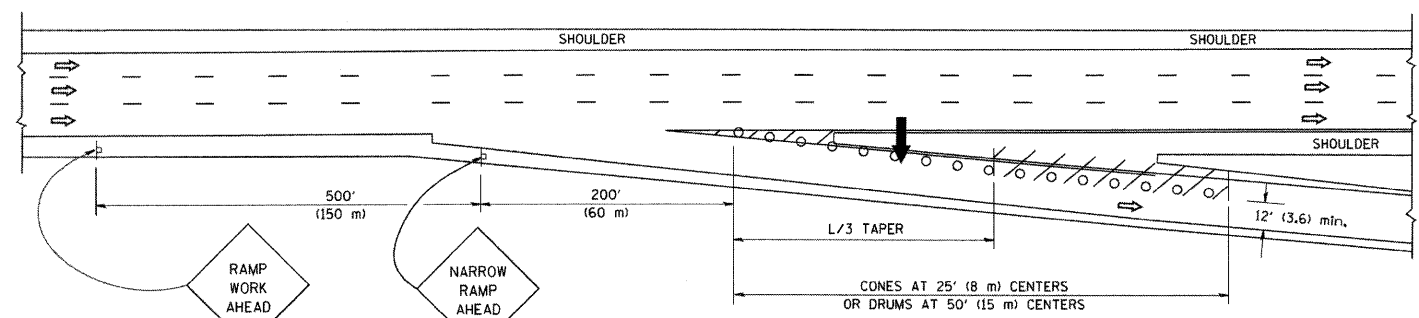
SHOULDER CLOSURE DETAILS



TYPICAL ENTRANCE RAMP



TYPICAL EXIT RAMP



TYPICAL EXIT RAMP

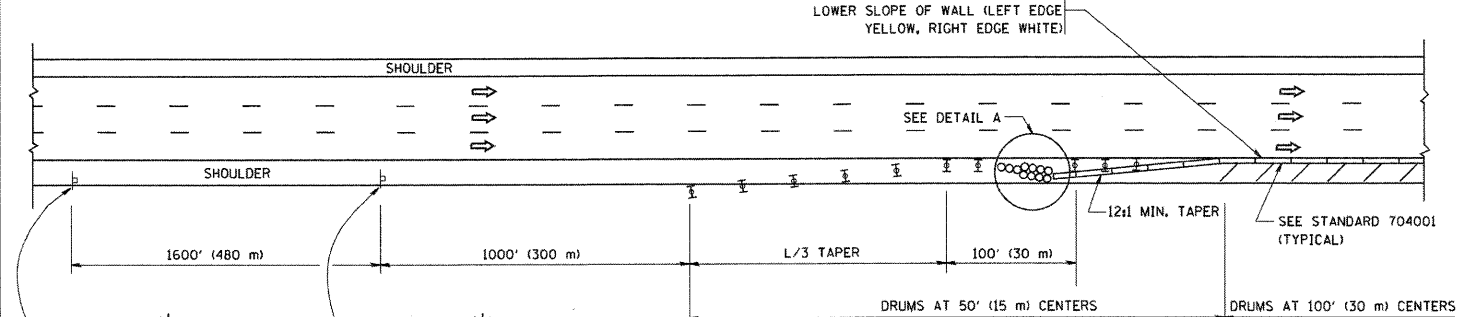
SYMBOLS

- ARROWBOARD
- WORK AREA
- SIGN ON PORTABLE OR PERMANENT SUPPORT
- FLAGGER WITH CONTROL SIGN
- TYPE II BARRICADE, DRUM OR VERTICAL BARRICADE WITH STEADY BURN MONO-DIRECTIONAL LIGHT
- CONE, DRUM OR BARRICADE

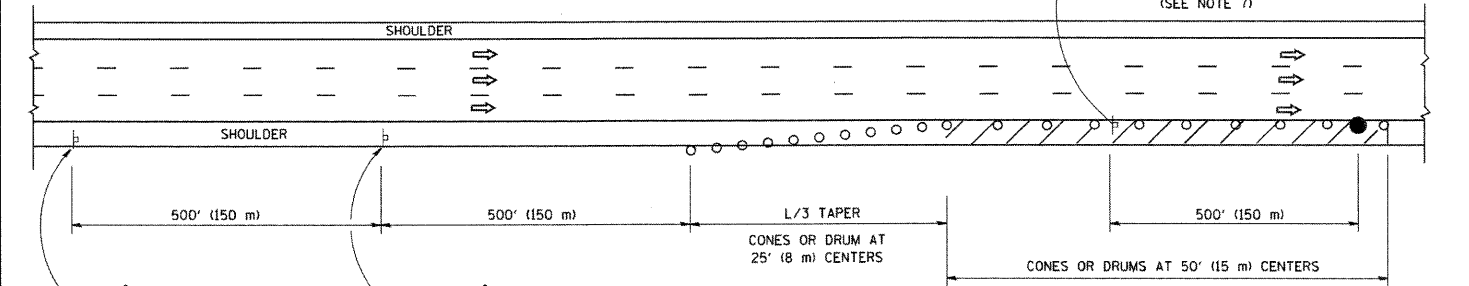
GENERAL NOTES

1. THE "L" DISTANCE EQUALS:
 

|                                      |                          |
|--------------------------------------|--------------------------|
| SPEED LIMIT                          | FORMULAS                 |
| 45 mph (80 km/h)<br>OR GREATER:      | METRIC    ENGLISH        |
| W = WIDTH OF OFFSET IN FEET (METERS) | L=0.65(W)(S)    L=(W)(S) |
| S = NORMAL POSTED SPEED MPH (KM/H)   |                          |
2. PLASTIC DRUMS WITH HIGH PERFORMANCE REFLECTIVE SHEETING AND STEADY BURNING LIGHTS ARE REQUIRED FOR ALL NIGHTTIME CLOSURES.
3. ALL SIGNS SHALL BE POST MOUNTED IF THE CLOSURE TIME EXCEEDS FOUR DAYS.
4. FLASHING LIGHTS SHALL BE USED DURING THE HOURS OF DARKNESS AND SHALL BE INSTALLED ABOVE THE FIRST TWO SETS OF SIGNS.



PERMANENT SHOULDER CLOSURE



DAYTIME SHOULDER CLOSURE

ARRAY DESIGN PER MANUFACTURER TO BE NCHRP 350 COMPLIANT FOR POSTED SPEED.

DETAIL "A"  
IMPACT ATTENUATOR, TEMPORARY  
(SEE NOTE 5)

ALL DIMENSIONS ARE IN INCHES (MILLIMETERS) UNLESS OTHERWISE SHOWN.

FILE NAME = W:\dststd\22x34\tcl7.dgn

USER NAME = geglianobt  
DESIGNED -  
DRAWN - D.W.S.  
PLOT SCALE = 50,0000' / IN.  
PLOT DATE = 1/4/2008

DESIGNED -  
DRAWN - D.W.S.  
CHECKED - J.A.F. 12-06  
DATE - 11-96

REVISED - J.A.F. 12-02  
REVISED - 04-03  
REVISED - J.A.F. 12-06  
REVISED - S.P.B. 01-07

STATE OF ILLINOIS  
DEPARTMENT OF TRANSPORTATION

TRAFFIC CONTROL DETAILS FOR FREEWAY  
SHOULDER CLOSURES AND PARTIAL RAMP CLOSURES  
SCALE: NONE SHEET NO. 1 OF 1 SHEETS STA. TO STA.

|   |              |              |              |           |
|---|--------------|--------------|--------------|-----------|
| F.A.I. RTE.                                     | SECTION      | COUNTY       | TOTAL SHEETS | SHEET NO. |
| 55  | (99-1&2)AC-3 | WILL         | 524          | 353       |
| TC-17   |              | CONTRACT NO. | 60C31        |           |
| FED. ROAD DIST. NO. 1 ILLINOIS FED. AID PROJECT |              |              |              |           |

FINAL