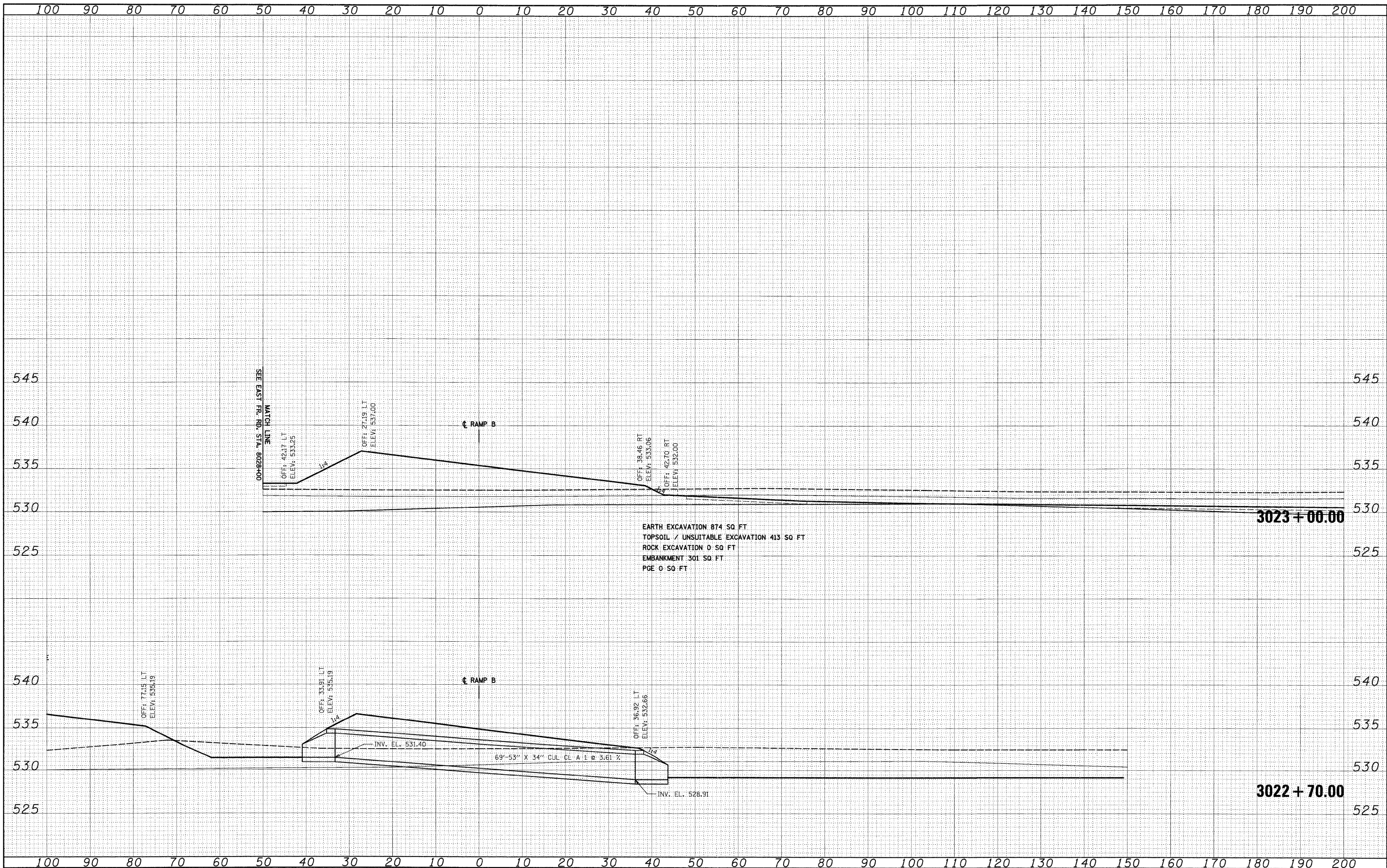


| | |
|---------------|--|
| DATE | |
| BY | |
| SURVEYED | |
| PLOTTED | |
| NOTE BOOK | |
| AREAS CHECKED | |

| | |
|------------------|--|
| DATE | |
| BY | |
| ORIGINAL SURVEY | |
| PLOTTED TEMPLATE | |
| NOTE BOOK | |
| AREAS CHECKED | |

McDonough Associates Inc.
 Engineers/Architects
 130 East Randolph Street, Chicago, Illinois 60601



| | |
|-------------|--------------------------|
| FILE NAME = | D:\60C31-SHT-XSSH705.dgn |
| USFR NAME = | TKI\uegi |
| DESIGNED - | TRK |
| DRAWN - | TRK |
| CHECKED - | DLT |
| DATE - | 12/18/09 |

| | |
|------------|--|
| REVISER - | |
| REVISION - | |
| REVISER - | |
| REVISION - | |
| REVISER - | |
| REVISION - | |

STATE OF ILLINOIS
 DEPARTMENT OF TRANSPORTATION

RAMP B CROSS SECTIONS

SCALE: 1"=10'H; 1/4"=5' V SHEET NO. 11 OF 36 SHEETS STA. 3022+70.00 TO STA. 3023+00.00

| | | | | |
|---|--------------|--------|--------------|-----------|
| F.A.I. RTE. | SECTION | COUNTY | TOTAL SHEETS | SHEET NO. |
| 55 | (99-1&2)AC-3 | WILL | 524 | 469 |
| CONTRACT NO. 60C31 | | | | |
| FED. ROAD DIST. NO. 1 ILLINOIS FED. AID PROJECT | | | | |