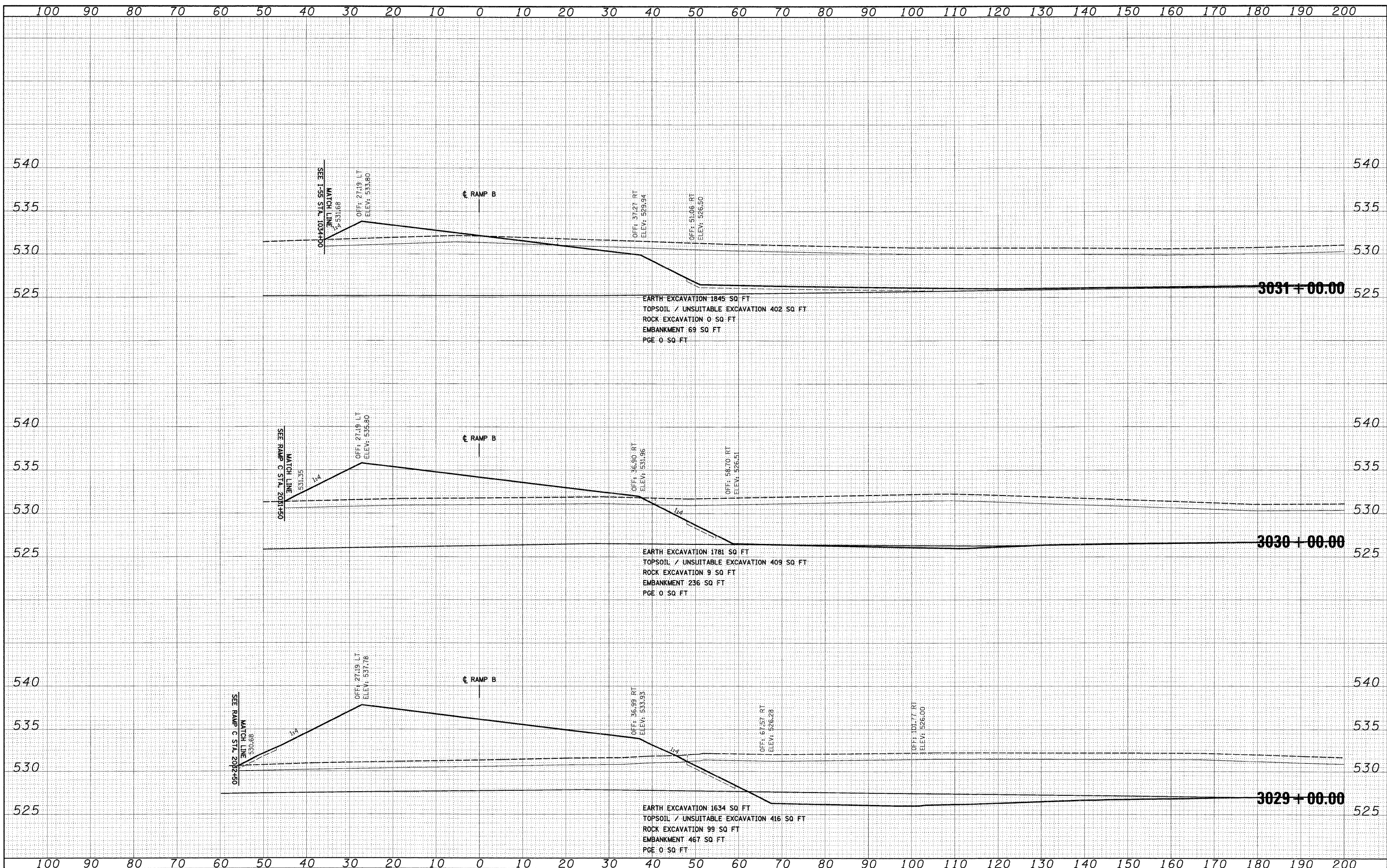


FINAL	SURVEYED	BY	DATE
SURVEY	PLOTTED		
NOTE BOOK	TEMPLATE		
NO.	AREAS CHECKED		

ORIGINAL	SURVEYED	BY	DATE
SURVEY	PLOTTED		
NOTE BOOK	TEMPLATE		
NO.	AREAS CHECKED		



FILE NAME = D:\620C31-SHT-XSSH105.dgn

USER NAME = TKluogal

DESIGNED - TRK

DRAWN - TRK

CHECKED - DLT

DATE - 12/18/09

REVISED -

REVISED -

REVISED -

REVISED -

**STATE OF ILLINOIS**  
**DEPARTMENT OF TRANSPORTATION**

**RAMP B CROSS SECTIONS**

SCALE: 1"=10'H; 1"=5' V

SHEET NO. 15 OF 36 SHEETS

STA. 3029+00.00 TO STA. 3031+00.00

F.A.I. RTE.	SECTION	COUNTY	TOTAL SHEETS	SHEET NO.
55	(99-1&2)AC-3	WILL	524	473
CONTRACT NO. 60C31				

FED. ROAD DIST. NO. 1 ILLINOIS FED. AID PROJECT

FINAL