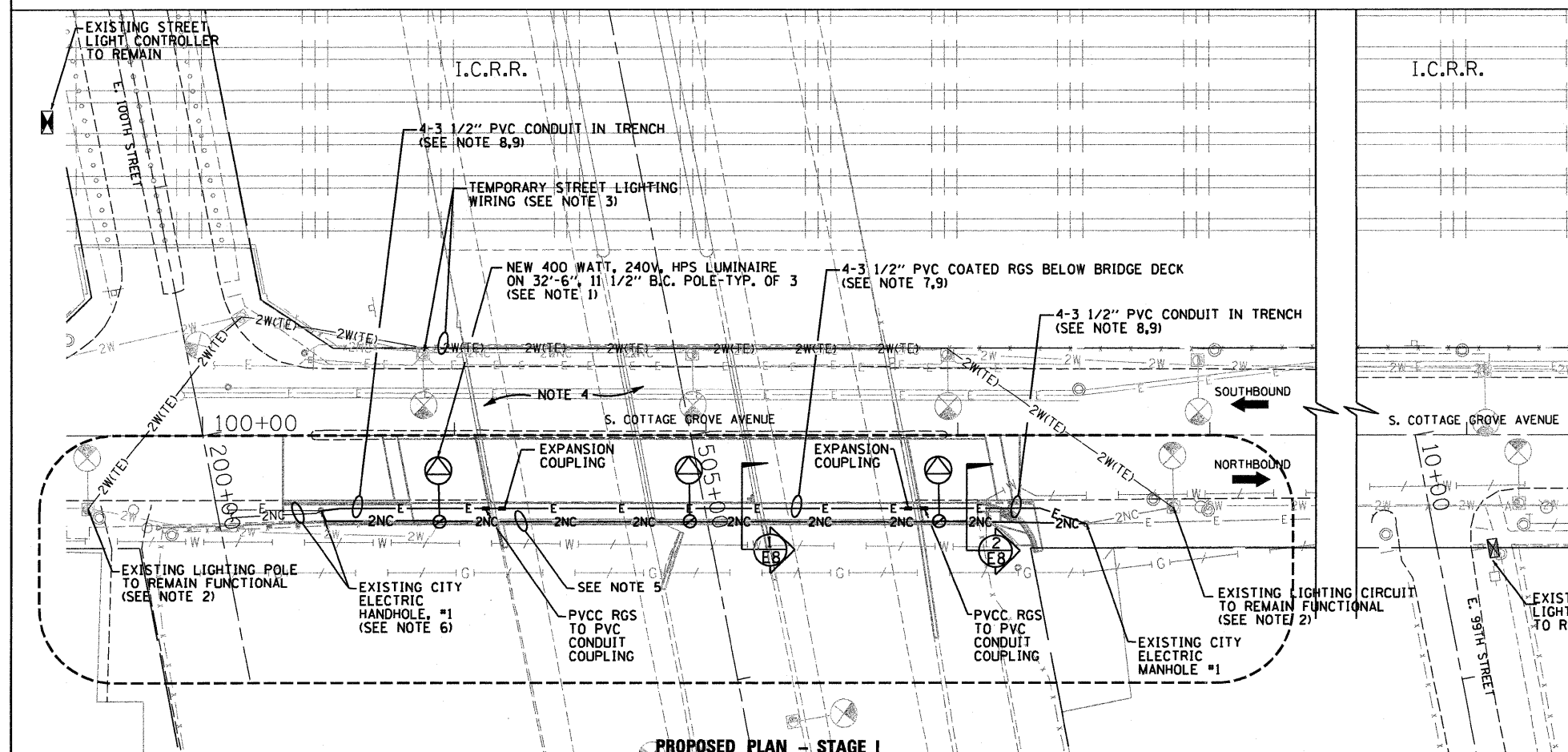


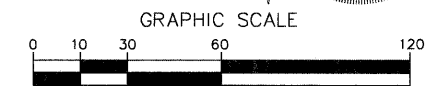
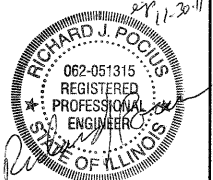
DEMOLITION PLAN NOTES:

- EXISTING CITY ELECTRICAL SERVICES SHALL REMAIN FUNCTIONAL. COORDINATE WITH THE BOE, CITY OF CHICAGO TO MAINTAIN SERVICES.
- CONTRACTOR SHALL FIELD VERIFY EXISTING LIGHTING CIRCUIT WIRING PRIOR TO REMOVAL AND PROVIDE TEMPORARY STREET LIGHTING CIRCUIT WIRING, 2 1/2" #6, 600 VOLTS TO MAINTAIN CIRCUIT CONTINUITY OF OTHER LIGHTING CIRCUIT. WIRING REMOVAL AND PROVIDING TEMPORARY WIRING INCLUDED IN PRICE OF MAINTAINING EXISTING LIGHTING SYSTEM.
- EXISTING HANDHOLE TO REMAIN. COORDINATE WITH OTHER TRADES TO RE-ADJUST THE COLLAR AND FRAME COVER LID TO ALIGN WITH THE NEW SIDEWALK SURFACE.
- FIELD VERIFY OPERATION OF EXISTING CIRCUIT CONTROLLER. IDENTIFY ALL AFFECTING BRIDGE LIGHTING CIRCUITS. MINIMIZE POWER INTERRUPTION WHERE POSSIBLE. PRIOR TO REQUIRED POWER INTERRUPTION, OBTAIN CITY APPROVAL AND SCHEDULE POWER INTERRUPTION WITH THE BUREAU OF ELECTRIC. REFER TO SHEET E4 FOR EXISTING CIRCUIT INFORMATION.
- REFER TO SHEET E5 FOR REMOVAL OF UNDERPASS BRIDGE LIGHTING.
- EXISTING STREET LIGHTING AND CITY ELECTRICAL SERVICES SHALL REMAIN FUNCTIONAL.



PROPOSED PLAN NOTES:

- FURNISH AND INSTALL NEW POLE OVER THE BRIDGE PARAPET. COORDINATE WITH THE STRUCTURAL INSTALLATION DETAILS. NEW POLE SHALL BE PAINTED BLACK AS PER CITY STANDARDS.
- EXISTING LIGHTING CIRCUIT WIRING SHALL BE SPLICED AND EXTEND TEMPORARY WIRING BETWEEN THE POLES TO MAINTAIN THE LIGHTING CIRCUIT FUNCTIONALITY.
- PROVIDE TEMPORARY AERIAL WIRING AND EXTEND EXISTING LIGHTING CIRCUIT TO SOUTH SIDE OF THE BRIDGE. USE EXISTING LIGHT POLES TO SUPPORT THE CABLE. REMOVE TEMPORARY WIRING UPON COMPLETION OF NEW WORK.
- EXISTING STREET LIGHTING SHALL REMAIN FUNCTIONAL.
- 2" RGS CONDUIT EMBEDDED IN BRIDGE PARAPET STRUCTURE. REFER TO SHEET E8 FOR CONDUIT AND POLE BASE DETAILS.
- PROTECT FUNCTIONALITY OF EXISTING STREET LIGHTING CIRCUIT. SPLICE EXISTING CABLES TO FACILITATE REMOVAL AND REINSTALLATION OF NEW LIGHTING CIRCUIT WIRING.
- EXPOSED CONDUIT(S) TO BE SUPPORTED USING CHANNELS AND RODS BELOW THE BRIDGE STRUCTURE. REFER TO SHEET E8 FOR CONDUIT INSTALLATION DETAILS.
- CONDUIT BEYOND THE ABUTMENT STRUCTURE TO MANHOLE/HANDHOLE TO BE INSTALLED IN TRENCH, PROVIDE COUPLING FOR CONDUIT TRANSITION FROM PVC COATED RGS TO PVC AND TERMINATE CONDUIT IN EXISTING MANHOLE/HANDHOLE.
- CITY ELECTRIC SERVICE WIRING IS TO BE INSTALLED BY OTHERS.



FILE NAME = ...DI-60F65-sh1027-light2.dgn	DESIGNED - PD	REVISED -	 600 WEST FULTON STREET CHICAGO, ILLINOIS 60611-1220 TEL: 312 454 9100 FAX: 312 588 1217 WEB: www.sepstein.com	STATE OF ILLINOIS DEPARTMENT OF TRANSPORTATION	ELECTRICAL DEMOLITION AND PROPOSED PLAN COTTAGE GROVE AVENUE		F.A.I. RTE. 94	SECTION 1314B-1	COUNTY COOK	TOTAL SHEETS 110	SHEET NO. 27	
PLOT TIME = 3:34:18 PM	CHECKED - PD/JM/RP	REVISED -					SCALE: 1" = 30'		SHEET NO. 2 OF 11 SHEETS		STA. 100+00.00 TO STA. 105+00.00	
PLOT DATE = 8/9/2010	DATE = 07/19/2010	REVISED -									CONTRACT NO. 60F65	
E2												