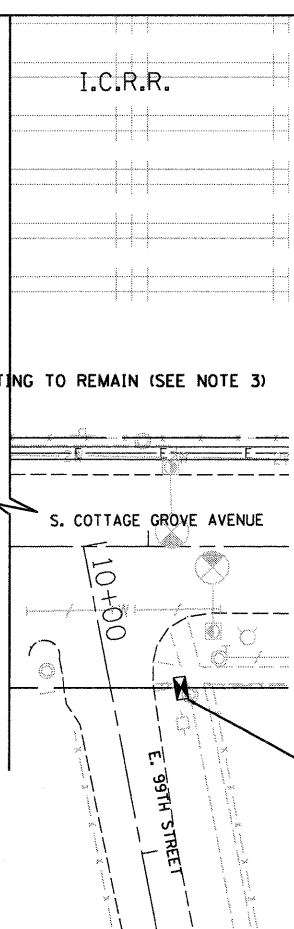
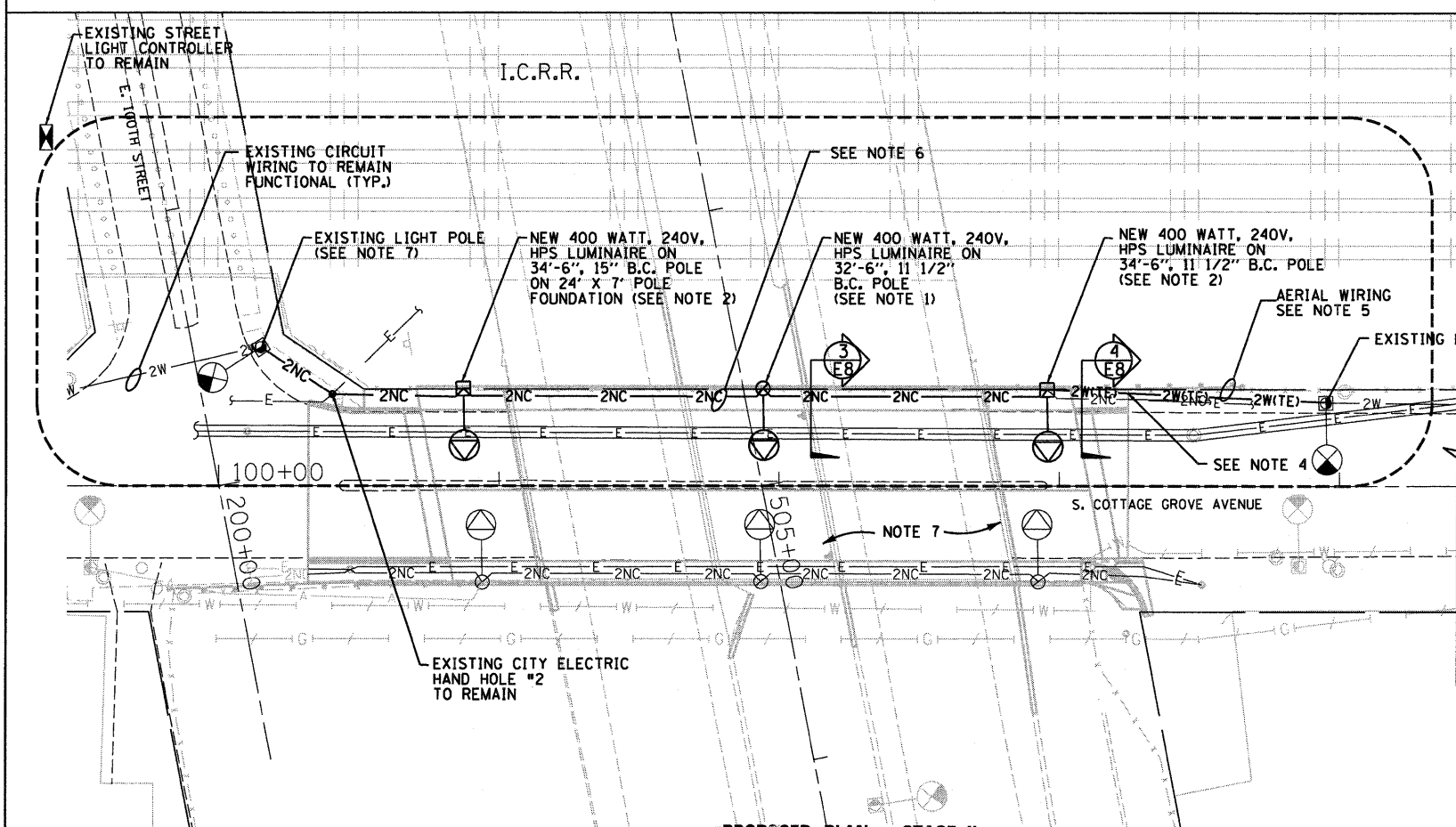


**DEMOLITION PLAN NOTES:**

1. EXISTING CITY ELECTRICAL SERVICES SHALL REMAIN FUNCTIONAL. COORDINATE WITH THE BOE, CITY OF CHICAGO TO MAINTAIN SERVICES.
2. CONTRACTOR SHALL FIELD VERIFY EXISTING LIGHTING CIRCUIT WIRING PRIOR TO REMOVAL AND PROVIDE TEMPORARY STREET LIGHTING CIRCUIT WIRING, 2 1/2" # 6, 600 VOLTS TO MAINTAIN CIRCUIT CONTINUITY OF OTHER LIGHTING CIRCUIT. WIRING REMOVAL AND PROVIDING TEMPORARY WIRING INCLUDED IN PRICE OF MAINTAINING EXISTING LIGHTING SYSTEM.
3. MAINTAIN CIRCUIT CONTINUITY OF EXISTING STREET LIGHTING CIRCUIT WIRING.
4. PROVIDE TEMPORARY WIRING CONNECTIONS REQUIRED TO MAINTAIN THE OPERATION OF EXISTING STREET LIGHTING FROM THE NEAREST AVAILABLE POWER SOURCE.
5. FIELD VERIFY OPERATION OF EXISTING CIRCUIT CONTROLLER. IDENTIFY ALL AFFECTING BRIDGE LIGHTING CIRCUITS. MINIMIZE POWER INTERRUPTION WHERE POSSIBLE. PRIOR TO REQUIRED POWER INTERRUPTION, OBTAIN CITY APPROVAL AND SCHEDULE POWER INTERRUPTION WITH THE BUREAU OF ELECTRIC. REFER TO SHEET E4 FOR EXISTING CIRCUIT INFORMATION.
6. REFER TO SHEET E6 FOR REMOVAL OF UNDERPASS BRIDGE LIGHTING.
7. EXISTING STREET LIGHTING SHALL REMAIN FUNCTIONAL.

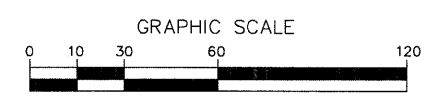
**DEMOLITION PLAN - STAGE II**



**PROPOSED PLAN NOTES:**

1. FURNISH AND INSTALL NEW POLE OVER THE BRIDGE PARAPET. COORDINATE WITH THE STRUCTURAL INSTALLATION DETAILS. NEW POLE SHALL BE PAINTED BLACK AS PER CITY STANDARDS.
2. INSTALL NEW POLE ON A CONCRETE FOUNDATION. NEW POLE SHALL BE PAINTED BLACK AS PER CITY STANDARDS.
3. EXISTING LIGHTING POLE SHALL REMAIN FUNCTIONAL. SPLICE EXISTING AERIAL WIRING AND EXTEND WIRING TO MAINTAIN CIRCUIT CONTINUITY TO STREET LIGHTS OPERATION.
4. FIELD VERIFY EXISTING LIGHTING CONDUIT AND WIRING. REMOVE ABANDON WIRING AND PROVIDE NEW (2) 1-C #6 AWG FOR NEW LIGHT POLE CIRCUIT WIRING AND REMOVE AERIAL WIRING.
5. PROVIDE TEMPORARY AERIAL WIRING AND EXTEND EXISTING LIGHTING CIRCUIT TO SOUTH SIDE OF THE BRIDGE. USE EXISTING LIGHT POLES TO SUPPORT THE CABLE. REMOVE TEMPORARY WIRING UPON COMPLETION OF NEW WORK.
6. 2" RGS CONDUIT EMBEDDED IN BRIDGE PARAPET STRUCTURE. REFER TO SHEET E8 FOR CONDUIT AND POLE BASE DETAILS.
7. EXISTING STREET LIGHTING SHALL REMAIN FUNCTIONAL.

**PROPOSED PLAN - STAGE II**



FILE NAME = ...D1-60F65-sh028-1:ght3.dgn  
 PLOT TIME = 8:35:50 AM  
 PLOT DATE = 7/19/2010

DESIGNED - PD  
 DRAWN - AP  
 CHECKED - PD/JM  
 DATE - 07/19/2010

REVISED -  
 REVISED -  
 REVISED -  
 REVISED -

**SEPSTEIN**  
 805 WEST FULTON STREET  
 CHICAGO, ILLINOIS 60611-1229  
 TEL 312 454 9100  
 FAX 312 589 1217  
 WEB www.sepstein.com

**STATE OF ILLINOIS**  
**DEPARTMENT OF TRANSPORTATION**

**ELECTRICAL DEMOLITION AND PROPOSED PLAN**  
**COTTAGE GROVE AVENUE**  
 SCALE: 1" = 30' SHEET NO. 3 OF 11 SHEETS STA. 100+00.00 TO STA. 105+00.00

F.A.I. RTE.	SECTION	COUNTY	TOTAL SHEETS	SHEET NO.
94	1314B-1	COOK	110	28
				CONTRACT NO. 60F65
ILLINOIS FED. AID PROJECT				