

STATE OF ILLINOIS
DEPARTMENT OF TRANSPORTATION

WEST EDGE OF SIDEWALK

Location	Station	Offset	Theoretical Grade Elevations
S. End South Appr. Slab	100+70.00	-35.50	589.92
A1	100+80.00	-35.50	590.22
A2	100+90.00	-35.50	590.52
N. End South Appr. Slab	101+00.00	-35.50	590.82

WEST EDGE OF PAVEMENT

Location	Station	Offset	Theoretical Grade Elevations
S. End South Appr. Slab	100+71.63	-27.00	590.10
A1	100+81.63	-27.00	590.40
A2	100+91.63	-27.00	590.70
N. End South Appr. Slab	101+01.63	-27.00	591.00

STAGE CONSTRUCTION JOINT

Location	Station	Offset	Theoretical Grade Elevations
S. End South Appr. Slab	100+77.12	1.50	590.66
A1	100+87.12	1.50	590.96
A2	100+97.12	1.50	591.26
N. End South Appr. Slab	101+07.12	1.50	591.56

☉ ROADWAY, PROFILE GRADE LINE

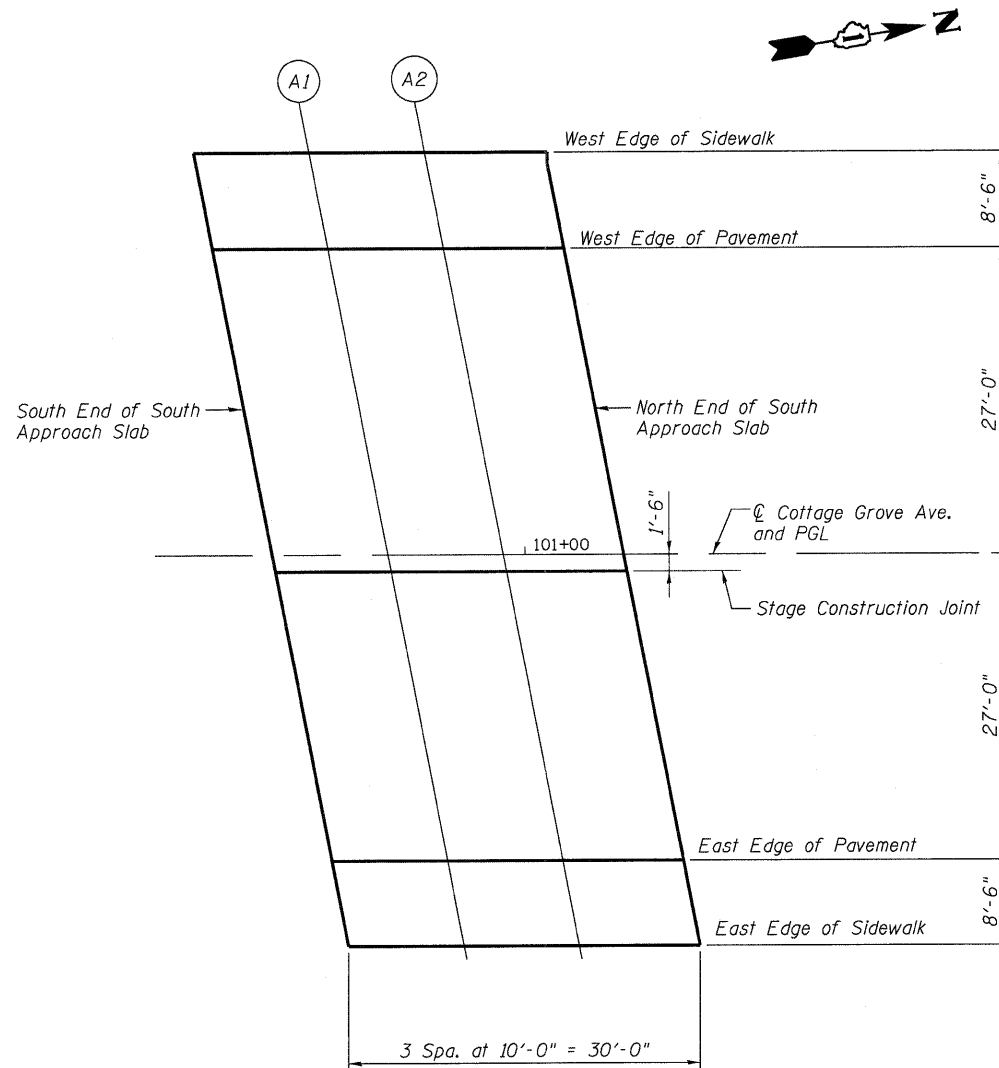
Location	Station	Offset	Theoretical Grade Elevations
S. End South Appr. Slab	100+76.83	0.00	590.68
A1	100+86.83	0.00	590.98
A2	100+96.83	0.00	591.28
N. End South Appr. Slab	101+06.83	0.00	591.58

EAST EDGE OF PAVEMENT

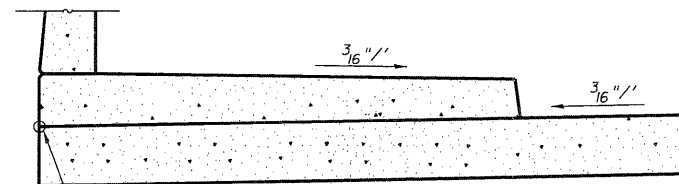
Location	Station	Offset	Theoretical Grade Elevations
S. End South Appr. Slab	100+82.03	27.00	590.41
A1	100+92.03	27.00	590.71
A2	101+02.03	27.00	591.01
N. End South Appr. Slab	101+12.03	27.00	591.31

EAST EDGE OF SIDEWALK

Location	Station	Offset	Theoretical Grade Elevations
S. End South Appr. Slab	100+83.66	35.50	590.33
A1	100+93.66	35.50	590.63
A2	101+03.66	35.50	590.93
N. End South Appr. Slab	101+13.66	35.50	591.22



PLAN



El. at Edge of Sidewalks are given at the theoretical top of Appr. slab which is the projection of the roadway slope to the Edge of sidewalk

PROJECTION UNDER SIDEWALK DETAIL

TOP OF SOUTH APPROACH
SLAB ELEVATIONS
STRUCTURE NO. 016-2119

DESIGNED	EV
CHECKED	PC
DRAWN	JCP
CHECKED	JPO

 600 WEST FULTON STREET CHICAGO, ILLINOIS 60661-1259	TEL 312 454 9100 FAX 312 559 1217 WEB www.epsteinglobal.com	SHEET NO. S10	F.A.I. RTE.	SECTION	COUNTY	TOTAL SHEETS	SHEET NO.
		S52 SHEETS	94	1314B-1	COOK	110	46
CONTRACT NO. 60F65						ILLINOIS FED. AID PROJECT	