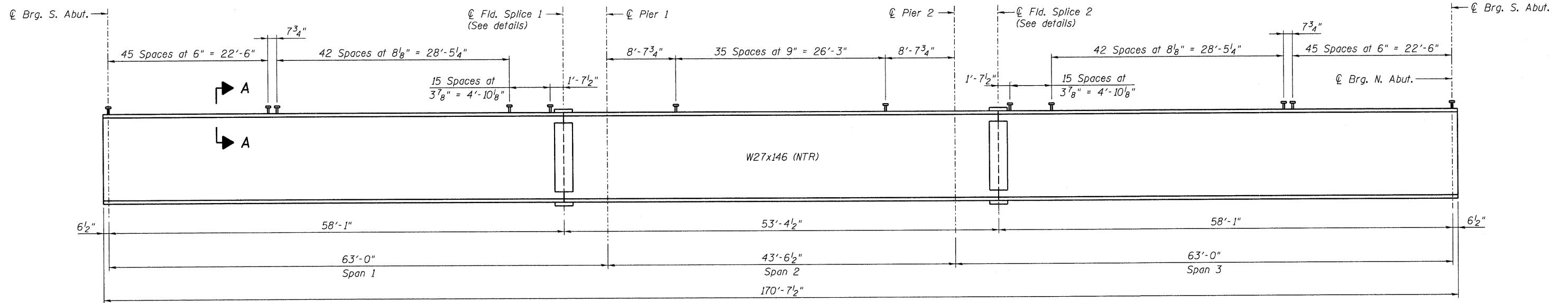


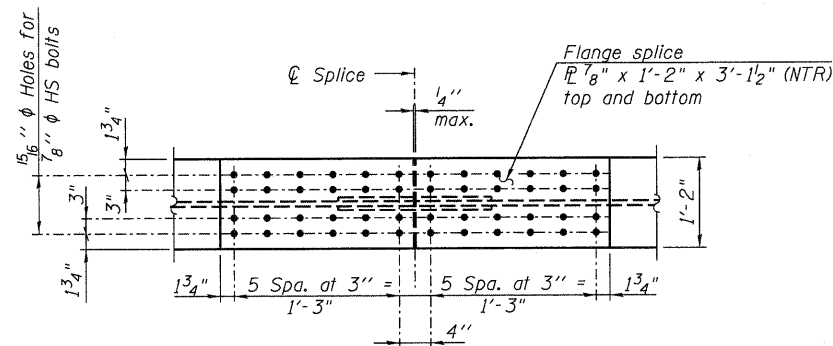
STATE OF ILLINOIS
DEPARTMENT OF TRANSPORTATION



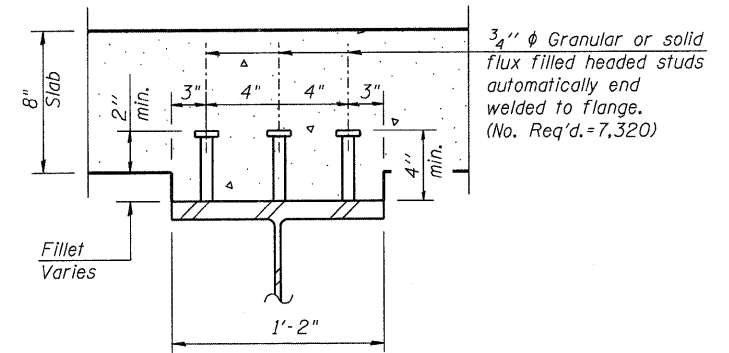
TYPICAL BEAM ELEVATION

TOP OF BEAM ELEVATIONS
(For Fabrication only)

| | ℄ Brg. S. Abut. | ℄ Splice 1 | ℄ Brg. Pier 1 | ℄ Brg. Pier 2 | ℄ Splice 1 | ℄ Brg. N. Abut. |
|---------|-----------------|------------|---------------|---------------|------------|-----------------|
| Beam 1 | 590.31 | 591.76 | 591.85 | 592.63 | 592.73 | 593.36 |
| Beam 2 | 590.38 | 591.82 | 591.91 | 592.68 | 592.78 | 593.40 |
| Beam 3 | 590.53 | 591.96 | 592.05 | 592.82 | 592.91 | 593.52 |
| Beam 4 | 590.69 | 592.10 | 592.19 | 592.95 | 593.04 | 593.64 |
| Beam 5 | 590.84 | 592.24 | 592.33 | 593.08 | 593.17 | 593.76 |
| Beam 6 | 590.88 | 592.27 | 592.36 | 593.10 | 593.19 | 593.77 |
| Beam 7 | 590.81 | 592.18 | 592.27 | 593.00 | 593.09 | 593.66 |
| Beam 8 | 590.73 | 592.10 | 592.19 | 592.91 | 593.00 | 593.55 |
| Beam 9 | 590.66 | 592.02 | 592.10 | 592.82 | 592.91 | 593.45 |
| Beam 10 | 590.67 | 592.02 | 592.10 | 592.81 | 592.89 | 593.43 |



VIEW B-B

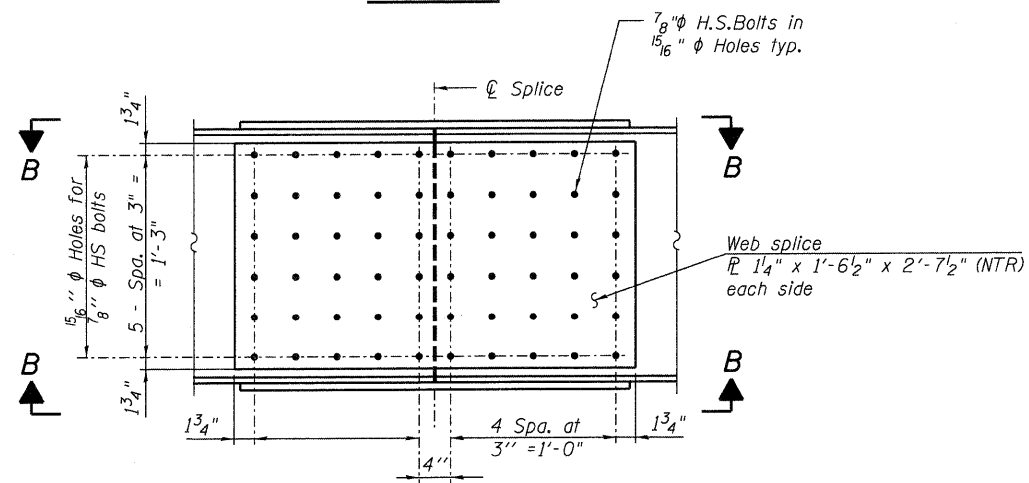


SECTION A-A

- Notes:
- Load carrying components designated "NTR" shall conform to the Supplemental Requirements for Notch Toughness, Zone 2.
 - AASHTO M270 Grade 50 steel shall be used for all wide flange beams and splice plates.

BILL OF MATERIALS

| Item | Unit | Total |
|---------------------------|--------|-------|
| Erecting Structural Steel | L. Sum | 1 |
| Stud Shear Connectors | Each | 7,320 |



TYPICAL SPLICE ELEVATION

SPLICE DETAIL
(20 Required)

| | |
|----------|-----|
| DESIGNED | EV |
| CHECKED | PC |
| DRAWN | JCP |
| CHECKED | JPO |

BEAM DETAILS
STRUCTURE NO. 016-2119

| | | | | | | |
|--|-----------------------------|-------------|---------|--------|--------------------|-----------|
| 600 WEST FULTON STREET CHICAGO, ILLINOIS 60661-1259 TEL 312 454 9100 FAX 312 559 1217 WEB www.spsteinglobal.com | SHEET NO. S22 S52 SHEETS | F.A.I. RTE. | SECTION | COUNTY | TOTAL SHEETS | SHEET NO. |
| | | 94 | 1314B-1 | COOK | 110 | 58 |
| | | | | | CONTRACT NO. 60F65 | |
| ILLINOIS FED. AID PROJECT | | | | | | |