

F.A.P. RTE.	SECTION	COUNTY	TOTAL SHEETS	SHEET NO.
338	108 B-1	LAKE	40	1
FED. ROAD DIST. NO.	ILLINOIS	CONTRACT NO. 60F92		

D-91-289-09

STATE OF ILLINOIS
DEPARTMENT OF TRANSPORTATION
DIVISION OF HIGHWAYS

**PLANS FOR PROPOSED
FEDERAL AID HIGHWAY**

F.A.P. ROUTE 338 (IL ROUTE 59) HOUGH ROAD
OVER FLINT CREEK TRIBUTARY (0.1 MI SOUTH OF US ROUTE 14)
SECTION: 108 B-1
LAKE COUNTY
C-91-289-09
PPC DECK BEAM REPLACEMENT PROJECT
SN 049-0152

PROJECT LOCATED IN THE VILLAGE
OF BARRINGTON IN LAKE COUNTY, IL

FOR INDEX OF SHEETS, SEE SHEET NO. 2



STATE OF ILLINOIS
DEPARTMENT OF TRANSPORTATION
DIVISION OF HIGHWAYS

SUBMITTED March 26, 2010
Diana M. O'Keefe
DEPUTY DIRECTOR OF HIGHWAYS, REGION ENGINEER

May 7, 2010
Scott E. Stitt, P.E.
ENGINEER OF DESIGN AND ENVIRONMENT

May 7, 2010
Christine M. Reed
DIRECTOR OF HIGHWAYS, CHIEF ENGINEER

**PRINTED BY THE AUTHORITY
OF THE STATE OF ILLINOIS**

LONGO, INC.
CONSULTING ENGINEERS
1560 WALL ST., SUITE 222
NAPERVILLE, ILLINOIS 60563 PH (630) 577-9100

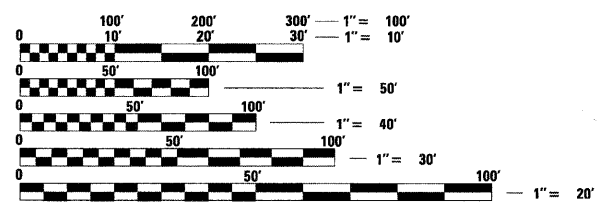
STATE OF ILLINOIS
WILLIAM H. HERR
REGISTERED PROFESSIONAL ENGINEER
081-005150

STATE OF ILLINOIS
WILLIAM H. HERR
REGISTERED PROFESSIONAL ENGINEER
082-047287
081-005150

W. H. Herr
Expires 11/20/10 Expires 11/30/10

DESIGN DESIGNATION
OTHER PRINCIPAL ARTERIAL

ADT 17,800 (2007)
POSTED SPEED LIMIT 30 MPH

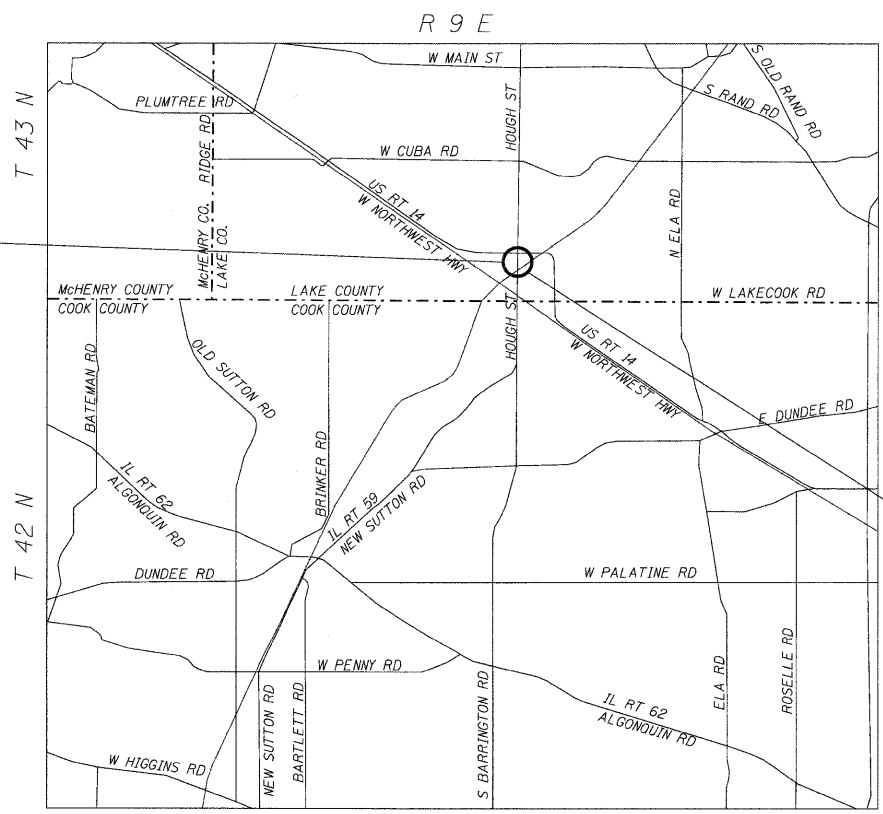


FULL SIZE PLANS HAVE BEEN PREPARED USING STANDARD ENGINEERING SCALES. REDUCED SIZED PLANS WILL NOT CONFORM TO STANDARD SCALES. IN MAKING MEASUREMENTS ON REDUCED PLANS, THE ABOVE SCALES MAY BE USED.

J.U.L.I.E.
JOINT UTILITY LOCATION INFORMATION FOR EXCAVATION
1-800-892-0123
OR 811

PROJECT MANAGER: KIM HARVEY (847) 705-4055
PROJECT ENGINEER: ERSKINE W. KLYCE (847) 705-4594

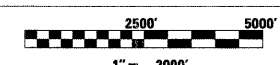
CONTRACT NO. 60F92



PROJECT BEGINS
STA. 98+00

PROJECT ENDS
STA. 101+60

CUBA TOWNSHIP
LOCATION MAP



NET AND GROSS LENGTH OF PROJECT = 360' = 0.068 MI