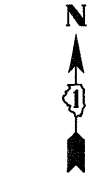
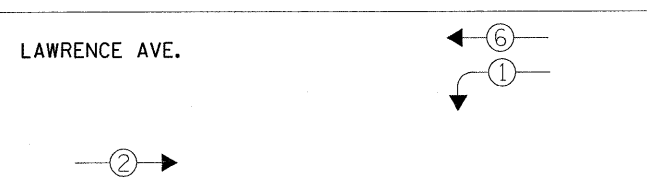
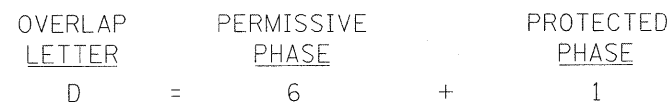


**CONTROLLER SEQUENCE**

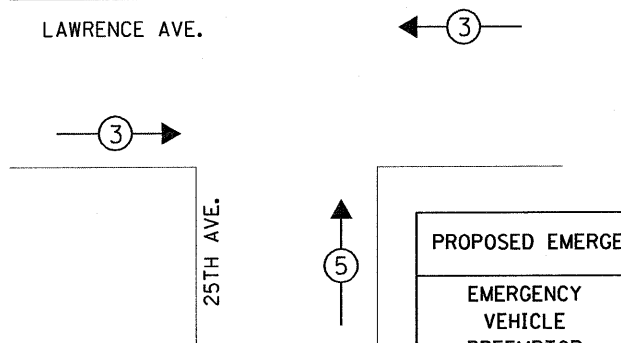


- LEGEND**
- ◻ SINGLE ENTRY PHASE
  - ◉ DUAL ENTRY PHASE
  - ◊ OL OVERLAP
  - ◉ PEDESTRIAN PHASE
  - \* NUMBER REFERS TO ASSOCIATED PHASE

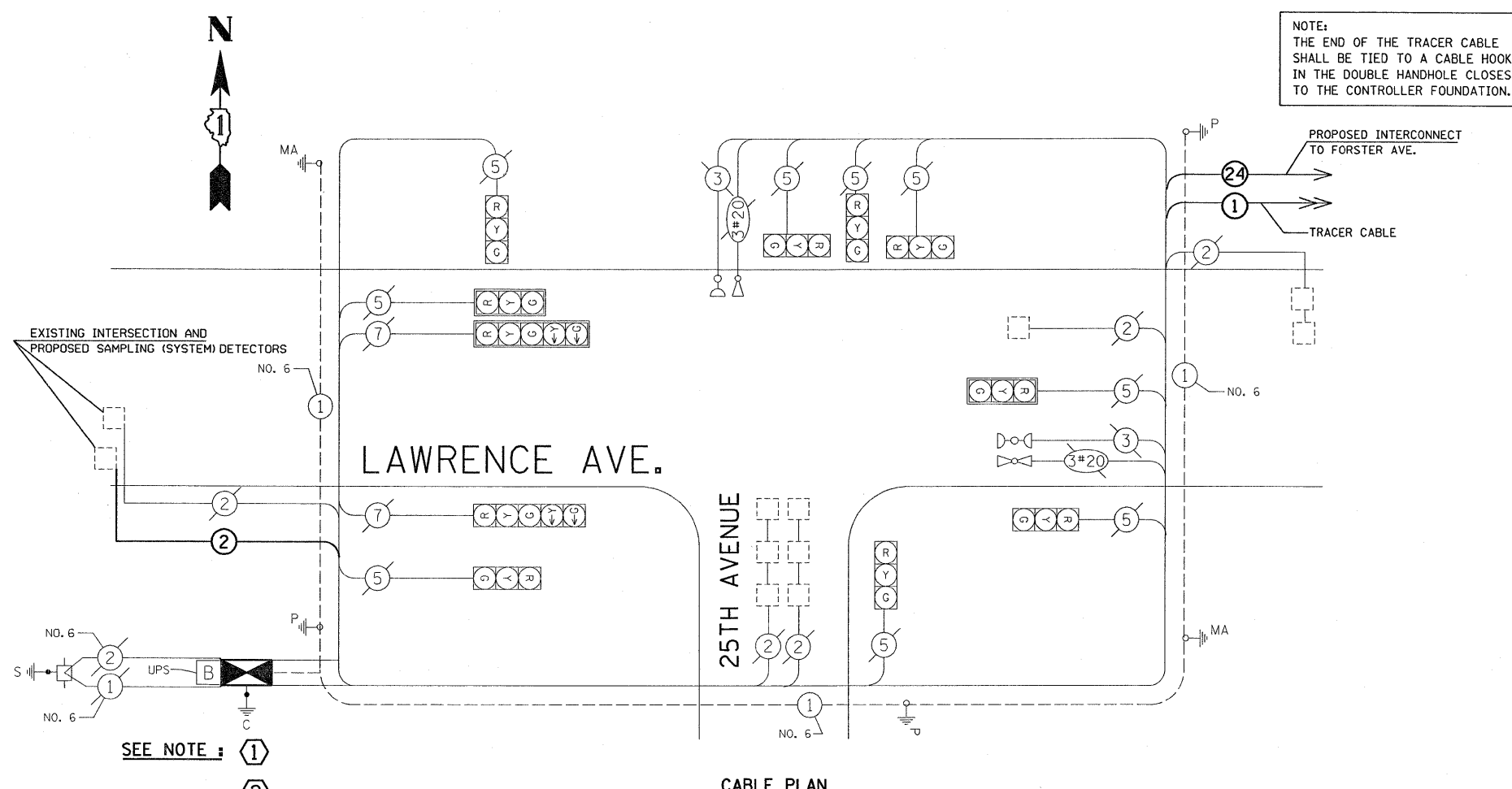
**PHASE DESIGNATION DIAGRAM**



**EMERGENCY VEHICLE PREEMPTION SEQUENCE**



PROPOSED EMERGENCY VEHICLE PREEMPTOR		
EMERGENCY VEHICLE PREEMPTOR	3	5
MOVEMENT	← →	↑



**NOTE:**  
THE END OF THE TRACER CABLE SHALL BE TIED TO A CABLE HOOK IN THE DOUBLE HANDHOLE CLOSEST TO THE CONTROLLER FOUNDATION.

**SEE NOTE :** ① ②

I.D.O.T. TRAFFIC SIGNAL INSTALLATION ELECTRICAL SERVICE REQUIREMENTS

TYPE	NO. LAMPS	WATTAGE INCAND.	WATTAGE LED	% OPERATION	TOTAL WATTAGE
SIGNAL (RED)	11	17	0.50		93.50
(YELLOW)	11	25	0.25		68.75
(GREEN)	11	15	0.25		41.25
ARROW	4	12	0.10		4.80
PED. SIGNAL		25	1.00		
CONTROLLER	1	100	1.00		100.00
ILLUM. SIGN			0.05		
FLASHER				0.05	
ENERGY COSTS TO:				TOTAL=	308.30

ENERGY SUPPLY CONTACT: \_\_\_\_\_  
PHONE: \_\_\_\_\_  
COMPANY: COMMONWEALTH EDISON

**SCHEDULE OF INTERSECTION QUANTITIES**

1	EACH	FULL-ACTUATED CONTROLLER AND TYPE IV CABINET
6	EACH	INDUCTIVE LOOP DETECTOR
1	EACH	MAINTENANCE OF EXISTING TRAFFIC SIGNAL INSTALLATION
300	FOOT	ELECTRIC CABLE IN CONDUIT, LEAD-IN, NO. 14 1 PAIR
0.25	EACH	TRAFFIC CONTROL AND PROTECTION, STANDARD 701501
0.25	EACH	TRAFFIC CONTROL AND PROTECTION, STANDARD 701502
0.25	EACH	TRAFFIC CONTROL AND PROTECTION, STANDARD 701801
1	EACH	REMOVE EXISTING TRAFFIC SIGNAL EQUIPMENT
1	EACH	TRANSCEIVER - FIBER OPTIC

- ① THE CONTRACTOR SHALL DISCONNECT AND REMOVE EACH UNINTERRUPTIBLE POWER SUPPLY (UPS) CABINET AND ALL ASSOCIATED ITEMS NEEDED TO REINSTALL TO EACH NEW CONTROLLER CABINET. THE COST TO REINSTALL EACH OF THE UPS CABINETS WILL BE INCLUDED IN THE COST OF THE NEW CONTROLLER AND CABINET.
- ② THE CONTRACTOR SHALL REMOVE AND RELOCATE ALL THE EXISTING EMERGENCY VEHICLE PRIORITY SYSTEM PHASING UNITS FROM EACH OF THE EXISTING CONTROLLER CABINETS AND REINSTALL TO EACH OF THE NEW CABINETS. THE COST WILL BE INCLUDED IN THE COST OF THE NEW CONTROLLERS AND CABINETS.

: 07:39:08 06/17/2010