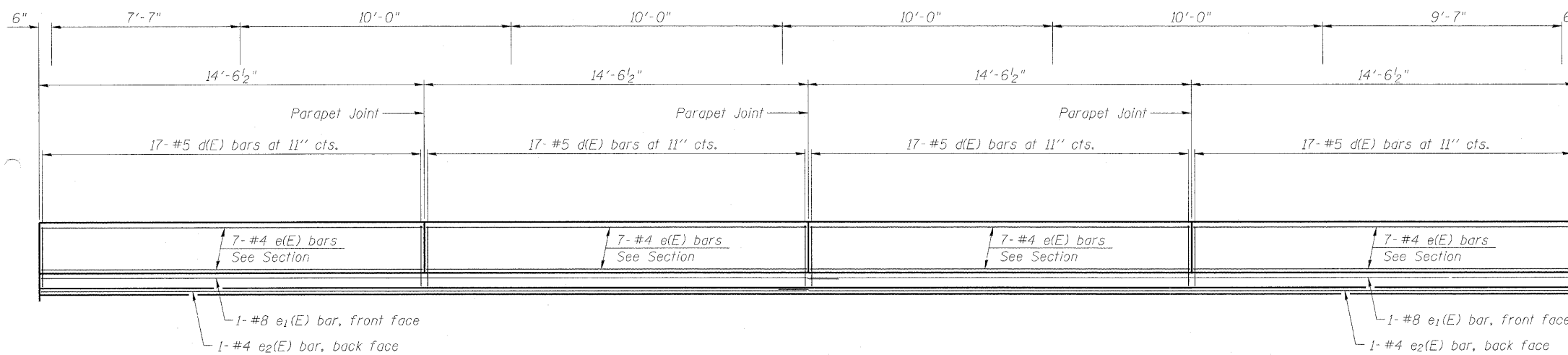
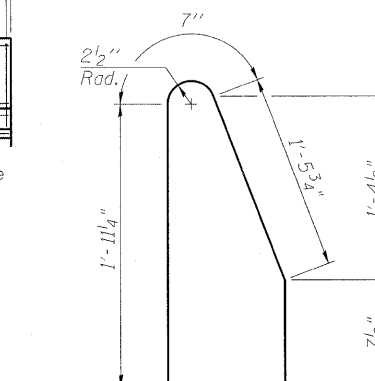


STATE OF ILLINOIS
DEPARTMENT OF TRANSPORTATION

**SUPERSTRUCTURE
BILL OF MATERIAL**



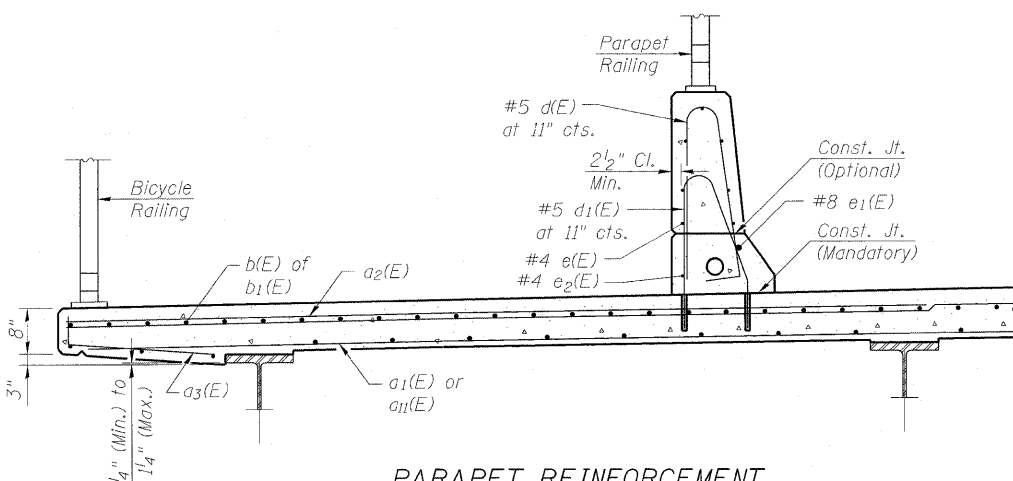
INSIDE ELEVATION OF PARAPET



BAR d₁(E)

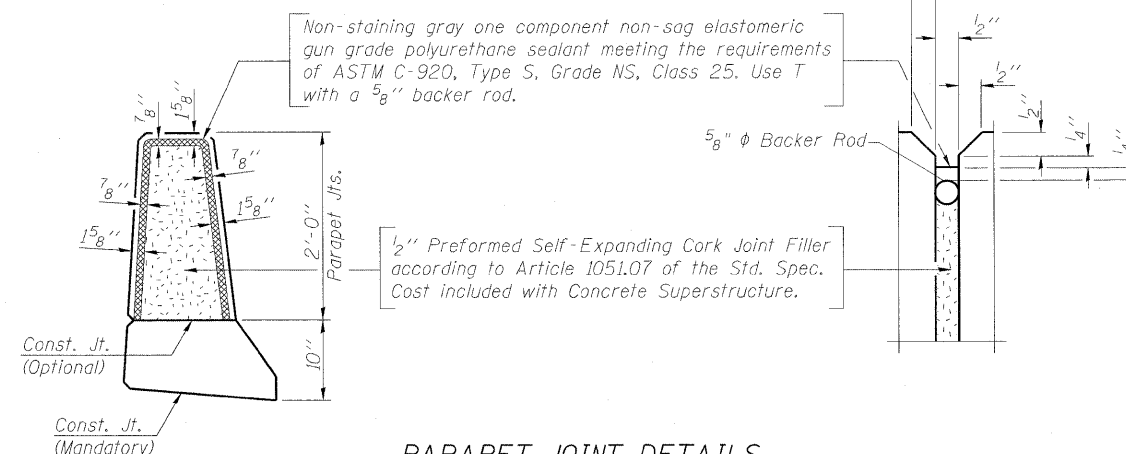
Bar	No.	Size	Length	Shape
a(E)	127	#5	45'-10"	—
a ₁ (E)	78	#5	45'-6"	—
a ₂ (E)	254	#5	15'-0"	—
a ₃ (E)	156	#5	2'-8"	—
a ₄ (E)	2	#5	42'-4"	—
a ₆ (E)	60	#5	8'-4"	—
a ₁₀ (E)	127	#5	42'-2"	—
a ₁₁ (E)	78	#5	41'-10"	—
a ₁₄ (E)	2	#5	38'-7"	—
a ₁₆ (E)	6	#5	2'-2"	—
a ₂₆ (E)	6	#5	5'-10"	—
b(E)	161	#5	35'-7"	—
b ₁ (E)	161	#5	25'-7"	—
d(E)	136	#5	5'-7"	—
d ₁ (E)	136	#5	4'-8"	—
e(E)	56	#4	14'-2"	—
e ₁ (E)	4	#8	32'-6"	—
e ₂ (E)	4	#4	30'-5"	—
x(E)	154	#5	6'-5"	—
Reinforcement Bars, Epoxy Coated			Pound	37,640
Concrete Superstructure			Cu. Yds.	152.2

Reinforcement bars designated (E) shall be epoxy coated.
Reinforcement bars shall not pass thru aluminum sheets and cork joint filler.

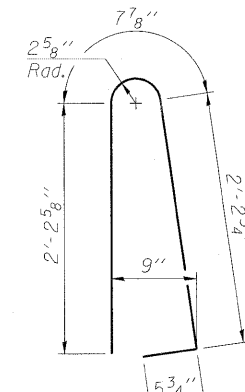


PARAPET REINFORCEMENT
FOR INTERIOR DECK PARAPET LOCATIONS

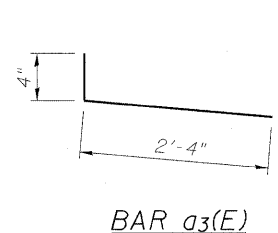
Core and set #5 d (E) bar according to Article 509.06 of the Standard Specifications. Cored holes shall be roughened or scored per manufacturer's recommendations. Maximum depth of hole shall not exceed 6".



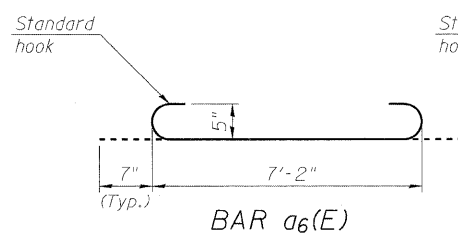
PARAPET JOINT DETAILS



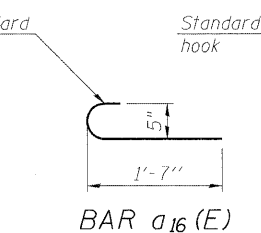
BAR d(E)



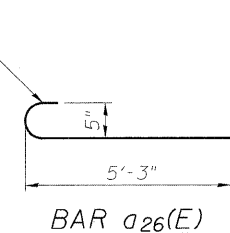
BAR a₃(E)



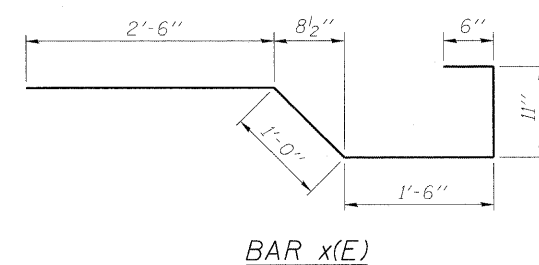
BAR a₆(E)



BAR a₁₆(E)



BAR a₂₆(E)



BAR x(E)

**SUPERSTRUCTURE DETAILS
STRUCTURE NO. 016-0581**

DESIGNED MAH
CHECKED JMH
DRAWN DR
CHECKED JMH

COLLINS ENGINEERS
123 N. WACKER DR., SUITE 300
CHICAGO, IL 60606
(312) 704-9300
ILLINOIS PROFESSIONAL DESIGN FIRM LICENSE NO. 184-000993

SHEET NO. S8
OF
S27 SHEETS

F.A.P. RTE. 339	SECTION 116-Y-2-BR-1	COUNTY COOK	TOTAL SHEETS 74	SHEET NO. 30
CONTRACT NO. 60J00			ILLINOIS FED. AID PROJECT	