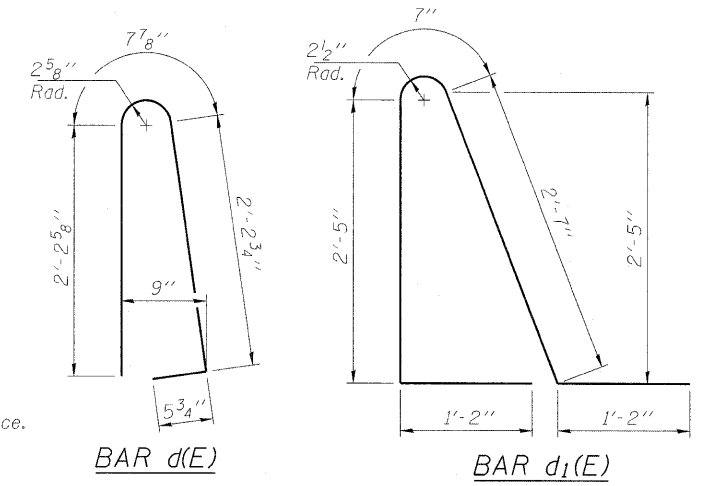
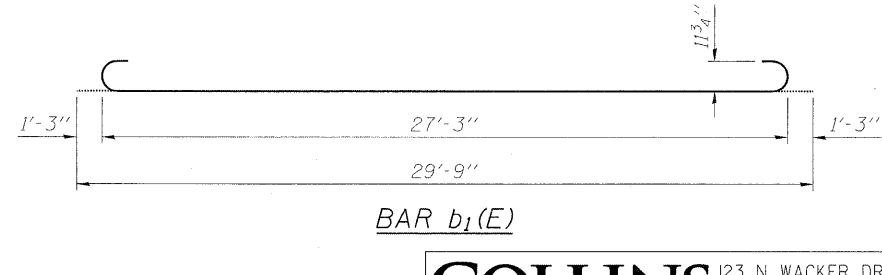
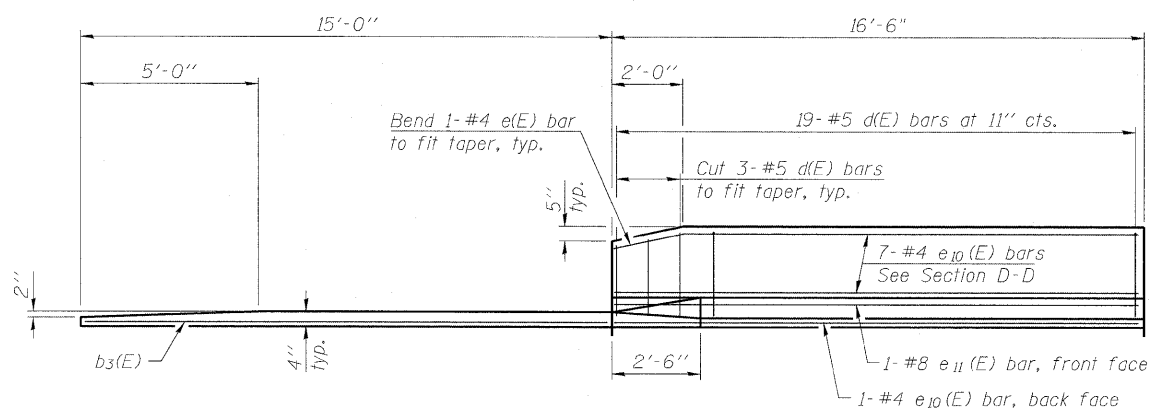
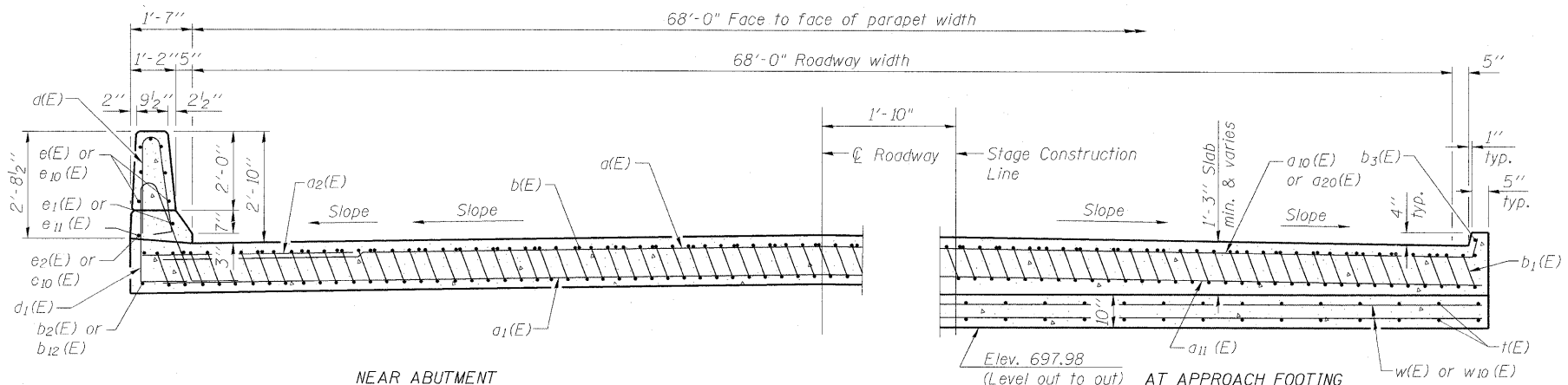
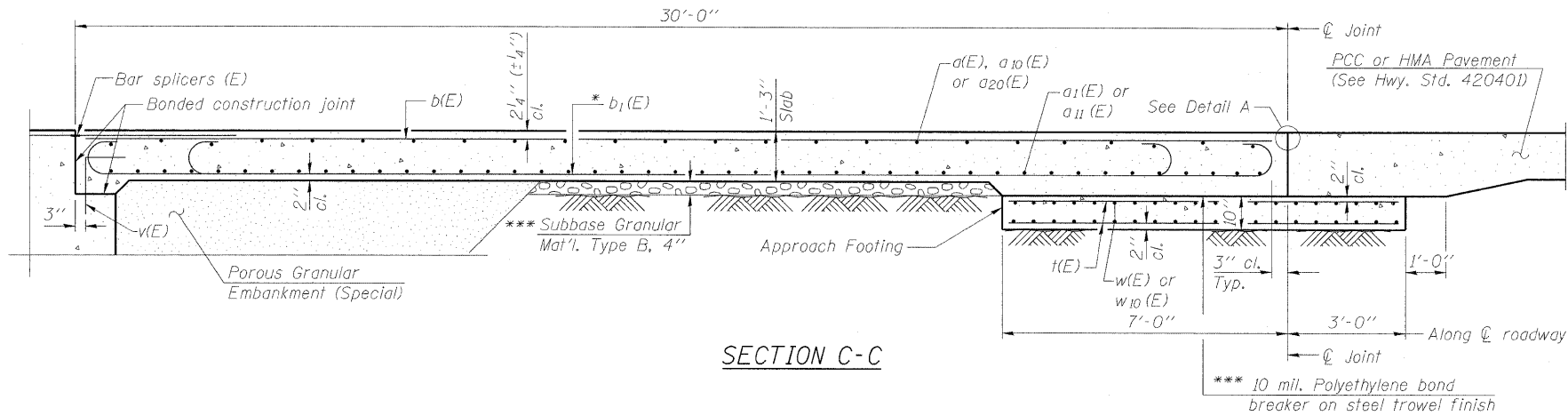


STATE OF ILLINOIS
DEPARTMENT OF TRANSPORTATION

Notes:

See sheet S11 of S27 for Detail A and View B-B.
Approach slab and parapet concrete shall be paid for as Concrete Superstructure.
Approach footing concrete shall be paid for as Concrete Structures.
Reinforcement shall be paid for as Reinforcement Bars, Epoxy Coated.
For v(E) bar details, see sheet S24 of S27.
The approach footing maximum applied service bearing pressure (Qmax) = 2.0 ksf.
For bar splicer details, see sheet S25 of S27.
Cost of excavation for approach footing included with Concrete Structures.
For Porous Granular Embankment (Special) and drainage treatment details, see sheet S2 of S27.
For additional parapet details, see sheet S16 of S27.



* Tilt #9 b1(E) bars as required to maintain clearance.
*** Cost included with Concrete Superstructure.

WEST APPROACH
BILL OF MATERIAL

Bar	No.	Size	Length	Shape
a(E)	25	#4	37'-6"	—
a1(E)	46	#5	37'-6"	—
a2(E)	38	#6	6'-6"	—
a10(E)	13	#4	33'-7"	—
a11(E)	46	#5	33'-2"	—
a20(E)	13	#4	33'-5"	—
b(E)	58	#4	29'-8"	—
b1(E)	172	#9	29'-9"	U
b2(E)	1	#4	29'-8"	—
b3(E)	1	#4	14'-8"	—
b12(E)	2	#4	14'-8"	—
d(E)	55	#5	5'-7"	U
d1(E)	55	#5	7'-11"	U
e(E)	14	#4	15'-5"	—
e1(E)	1	#8	31'-2"	—
e2(E)	1	#4	31'-2"	—
e10(E)	8	#4	16'-2"	—
e11(E)	1	#8	16'-2"	—
t(E)	144	#4	9'-9"	—
w(E)	40	#5	37'-6"	—
w10(E)	40	#5	33'-2"	—
Concrete Superstructure	Cu. Yd.		113.2	
Concrete Structures	Cu. Yd.		22.2	
Reinforcement Bars, Epoxy Coated	Pound		28,505	

(Sheet 2 of 2)
WEST BRIDGE APPROACH SLAB DETAILS
STRUCTURE NO. 016-0581

DESIGNED MAH
CHECKED JMh
DRAWN DR
CHECKED JMh

BA-R 11-1-09

COLLINS ENGINEERS
123 N. WACKER DR., SUITE 300 CHICAGO, IL 60606 (312) 704-9300
ILLINOIS PROFESSIONAL DESIGN FIRM LICENSE NO. 184-000993

SHEET NO. S12 OF S27 SHEETS	F.A.P. RTE. 339	SECTION 116-Y-2-BR-1	COUNTY COOK	TOTAL SHEETS 74	SHEET NO. 32B
	CONTRACT NO. 60J00				
ILLINOIS FED. AID PROJECT					