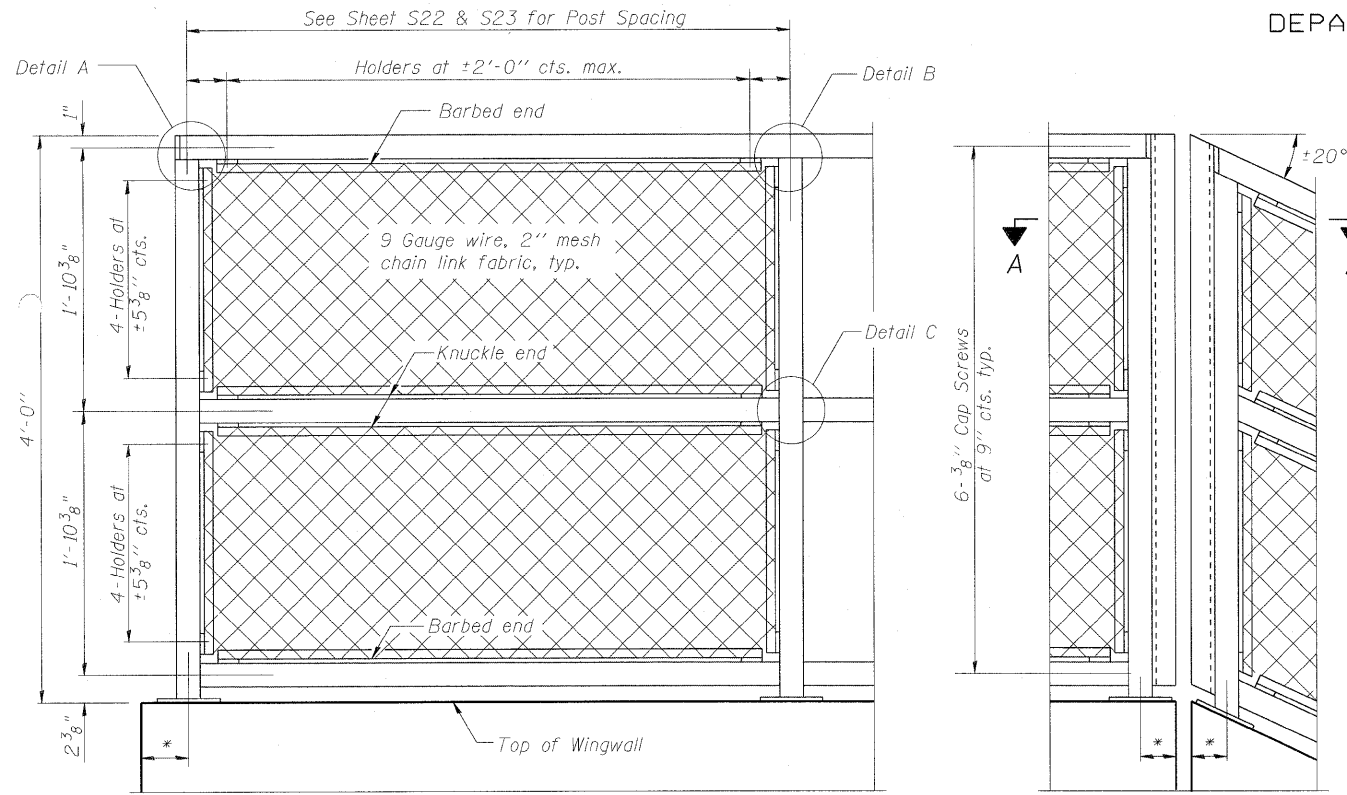


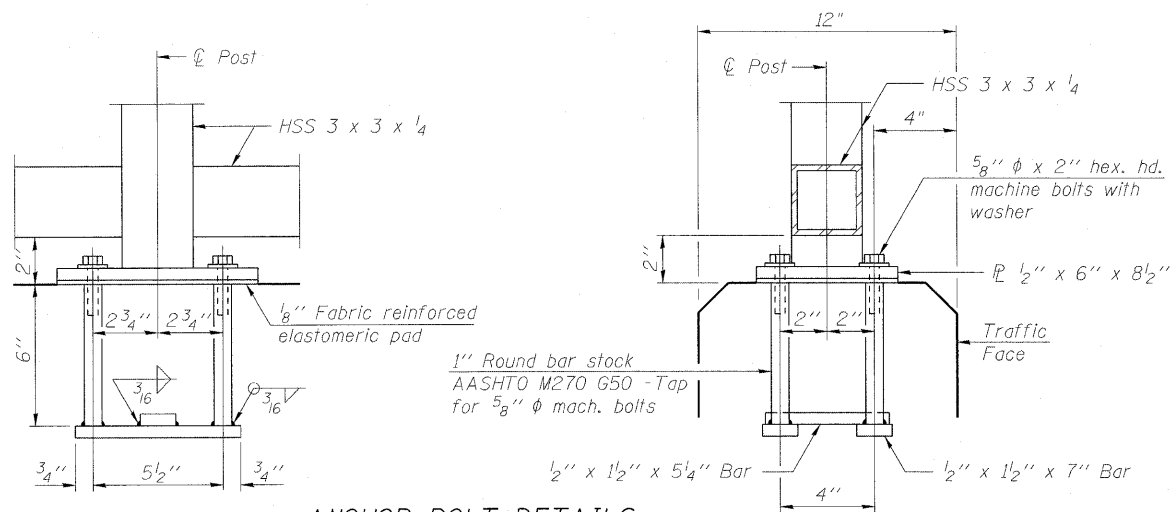
STATE OF ILLINOIS
DEPARTMENT OF TRANSPORTATION



ELEVATION
(Inside Face)

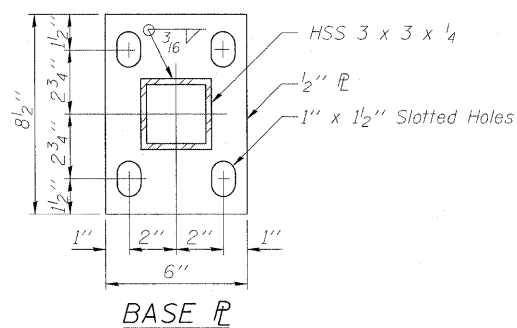
* Refer to Sheet S22 & S23 for Post Layout dimensions.

ELEVATION
(At Expansion Joint)



ANCHOR BOLT DETAILS

In lieu of the cast-in-place anchor device shown, the Contractor has the option of drilling and setting 5/8" ϕ anchor rods according to Article 509.06 of the Standard Specifications. Embedment shall be according to the manufacturer's specifications.



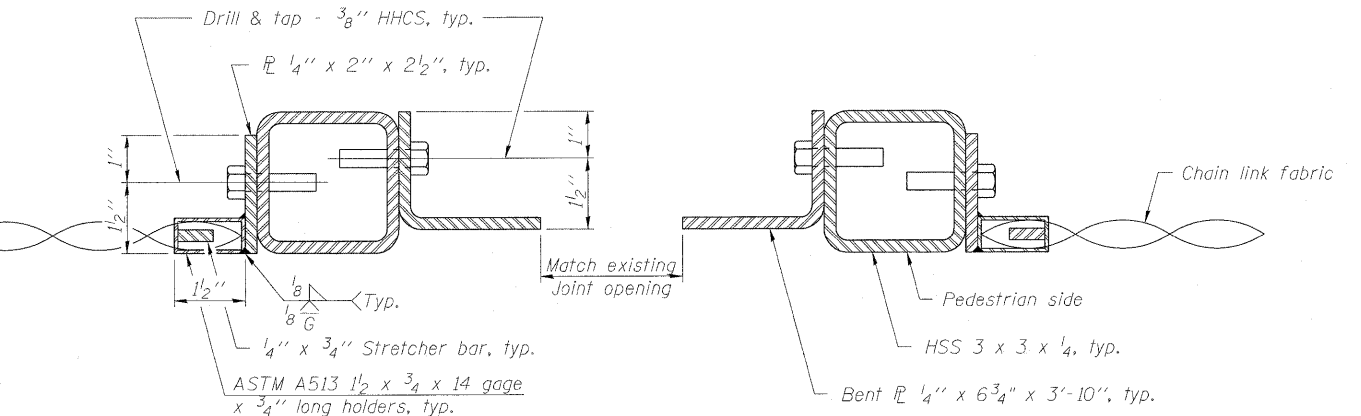
BASE R

DETAIL A

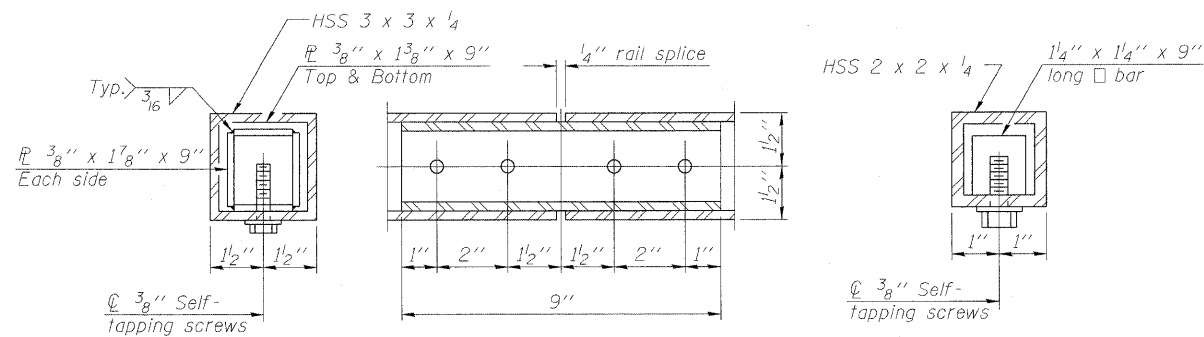
DETAIL B

DETAIL C

$R 1/4" \times 3" \times 3"$
 $\pm 20^\circ$ Match angle of Exist. Wingwall



SECTION A-A



RAIL SPLICE

Note:
All steel rail elements shall be galvanized according to Article 509.05 of the Standard Specifications.
Contractor to verify all dimensions in field prior to ordering materials.

DESIGNED MAH
CHECKED JMH
DRAWN DR
CHECKED JMH

(10'-0" Maximum Post Spacing)

(Sheet 1 of 2)
BRIDGE FENCE RAILING (SPECIAL)
STRUCTURE NO. 016-0581

COLLINS ENGINEERS
123 N. WACKER DR., SUITE 300
CHICAGO, IL 60606
(312) 704-9300
ILLINOIS PROFESSIONAL DESIGN FIRM LICENSE NO. 184-000993

SHEET NO. S14 OF S27 SHEETS	F.A.P. RTE. 339	SECTION 116-Y-2-BR-1	COUNTY COOK	TOTAL SHEETS 74	SHEET NO. 34
	CONTRACT NO. 60J00			ILLINOIS FED. AID PROJECT	