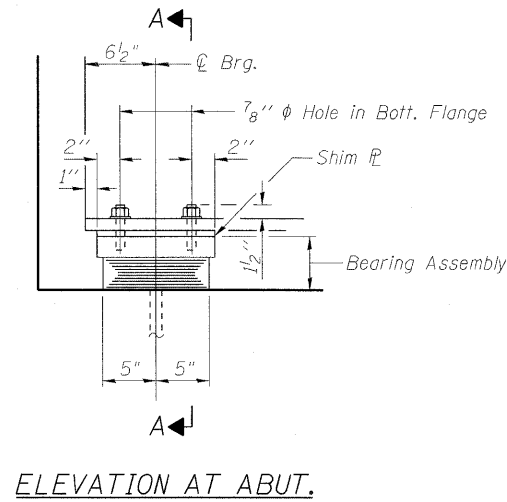
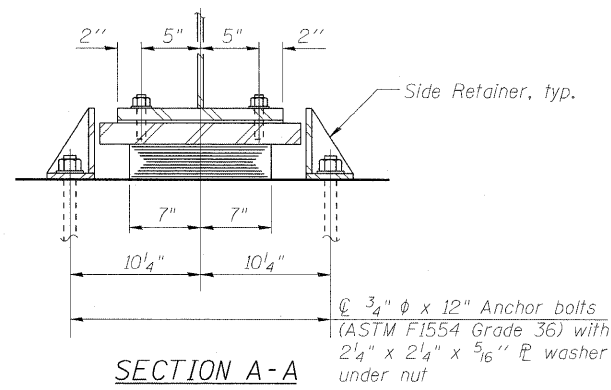


STATE OF ILLINOIS
DEPARTMENT OF TRANSPORTATION

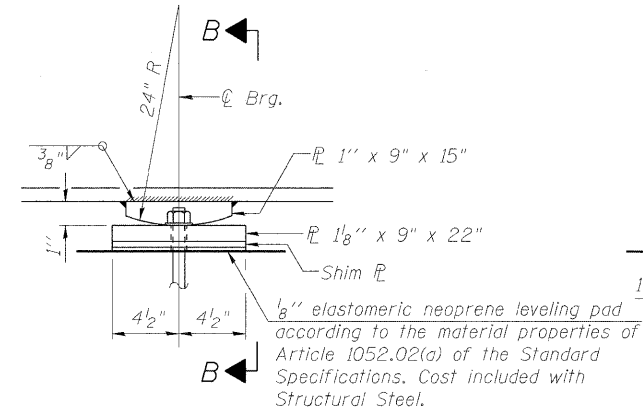


ELEVATION AT ABUT.

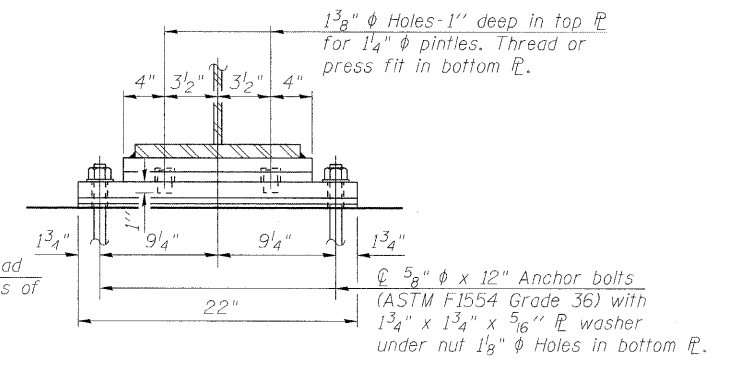


SECTION A-A

TYPE I ELASTOMERIC EXP. BRG. EAST ABUTMENT

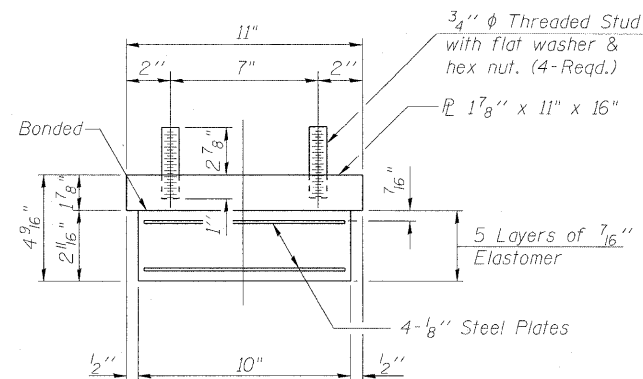


ELEVATION



SECTION B-B

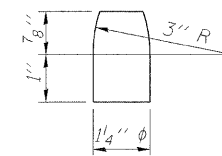
FIXED BEARING WEST ABUTMENT



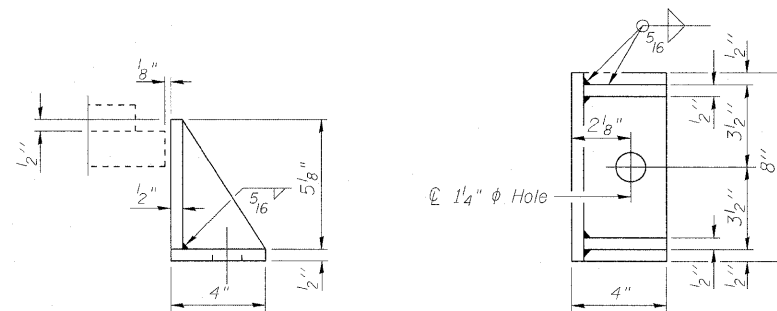
BEARING ASSEMBLY

Note:
Shim plates shall not be placed under Bearing Assembly.

Notes:
Anchor bolts shall be ASTM F1554 all-thread (or an Engineer-approved alternate material) of the grade(s) and diameter(s) specified. ASTM A307 Grade C anchor bolts may be used in lieu of ASTM F1554 Grade 36 (Fy=36ksi). The corresponding specified grade of AASHTO M314 anchor bolts may be used in lieu of ASTM F1554.
Anchor bolts at fixed bearings may be either cast in place or installed in holes drilled after the supported member is in place.
Anchor bolts for side retainers may be cast in place or installed in holes drilled before or after members are in place.
Drilled and set anchor bolts shall be installed according to Article 521.06 of the Standard Specifications.
Side retainers and other steel members required for the bearing assembly shall be included in the cost of Elastomeric Bearing Assembly, Type I.
The structural steel plates of the bearing assembly shall conform to the requirements of AASHTO M 270 Grade 50W.



PINTLE



SIDE RETAINER

Equivalent rolled angle with stiffeners will be allowed in lieu of welded plates.

BILL OF MATERIAL

Item	Unit	Total
Elastomeric Bearing Assembly Type I	Each	12
Anchor Bolts, 3/4" φ	Each	24
Anchor Bolts, 5/8" φ	Each	24

DESIGNED MAH
CHECKED JMH
DRAWN DR
CHECKED JMH

I-2E-1

11-1-09

BEARING DETAILS
STRUCTURE NO. 016-0581

COLLINS ENGINEERS ILLINOIS PROFESSIONAL DESIGN FIRM LICENSE NO. 184-000993	123 N. WACKER DR., SUITE 300 CHICAGO, IL 60606 (312) 704-9300	F.A.P. RTE.	SECTION	COUNTY	TOTAL SHEETS	SHEET NO.
		339	116-Y-2-BR-1	COOK	74	39
SHEET NO. S19 OF S27 SHEETS		CONTRACT NO. 60J00				
ILLINOIS FED. AID PROJECT						