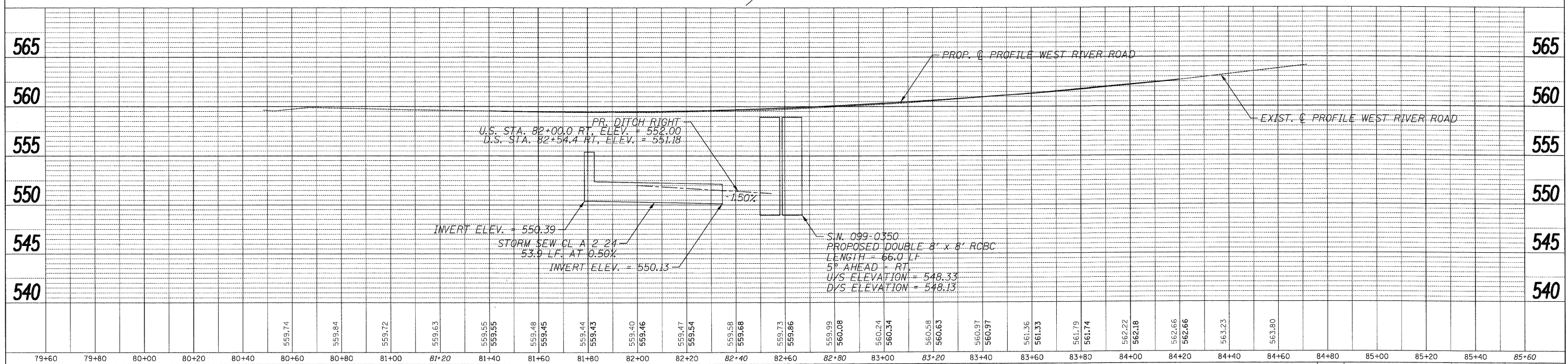
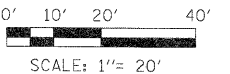
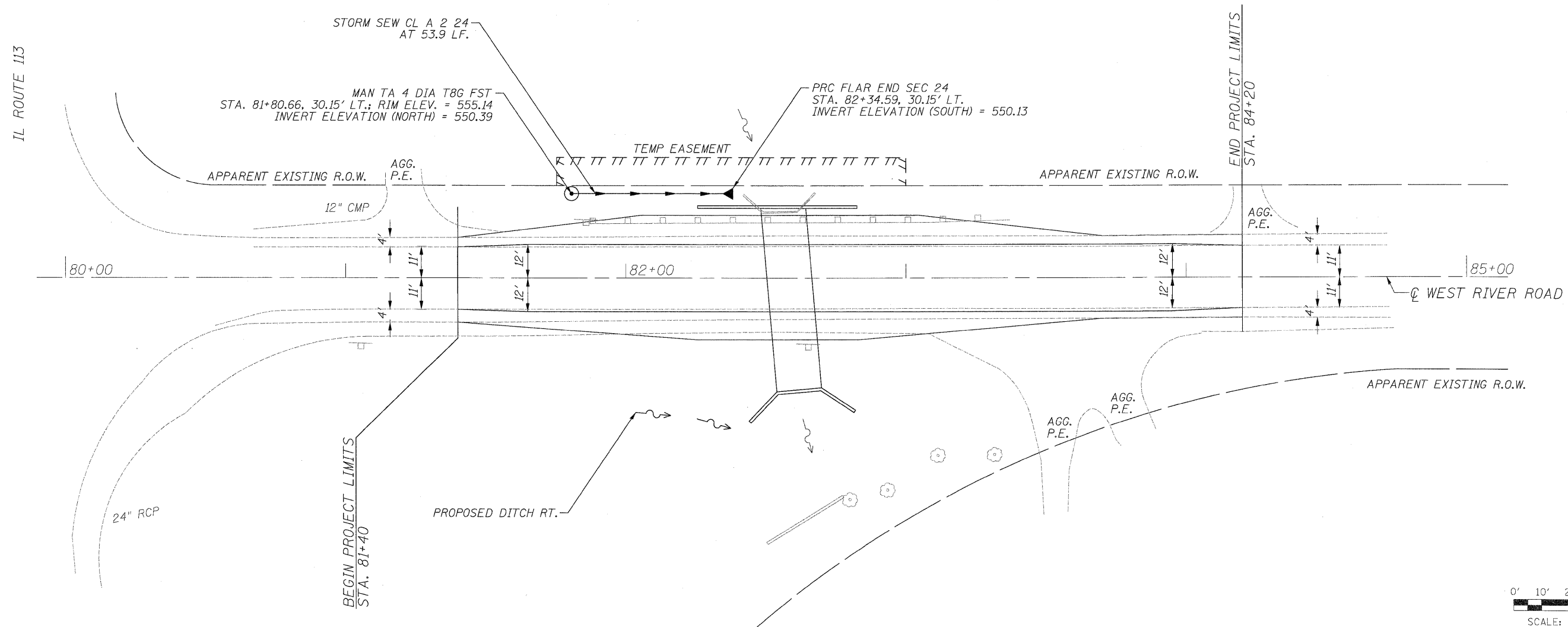
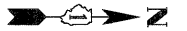


- NOTES:
 1. ALL STORM SEWER TO BE CLASS "A" UNLESS NOTED OTHERWISE.
 2. RIM ELEVATIONS & OFFSETS FOR DRAINAGE STRUCTURES CONSTRUCTED TO BE CALLED OUT TO THE CENTER OF STRUCTURE.
 3. SEE PLAN AND PROFILE SHEET FOR EXISTING DRAINAGE STRUCTURES SCHEDULED FOR REMOVAL.



DATE	
BY	
PLANNED	
DESIGNED	
CHECKED	
DATE	
BY	
DATE	
BY	

DATE	
BY	
PLANNED	
DESIGNED	
CHECKED	
DATE	
BY	
DATE	
BY	

DESIGNED -	DPS	REVISED -	
DRAWN -	DPS	REVISED -	
CHECKED -	FML	REVISED -	
DATE -	06/25/2010	REVISED -	

STATE OF ILLINOIS
 DEPARTMENT OF TRANSPORTATION

DRAINAGE PLAN AND PROFILE	
WEST RIVER ROAD OVER UNNAMED TRIBUTARY (0.1 MIN OF IL RT 113)	
SCALE: 1" = 20'	SHEET NO. 1 OF 1 SHEETS
STA. 81+40 TO STA. 84+20	

F.A.U. RTE.	SECTION	COUNTY	TOTAL SHEETS	SHEET NO.
0327	112 T-2	WILL	22	9
D-91-198-10		CONTRACT NO. 60J17		
FED. ROAD DIST. NO.	ILLINOIS FED. AID PROJECT			