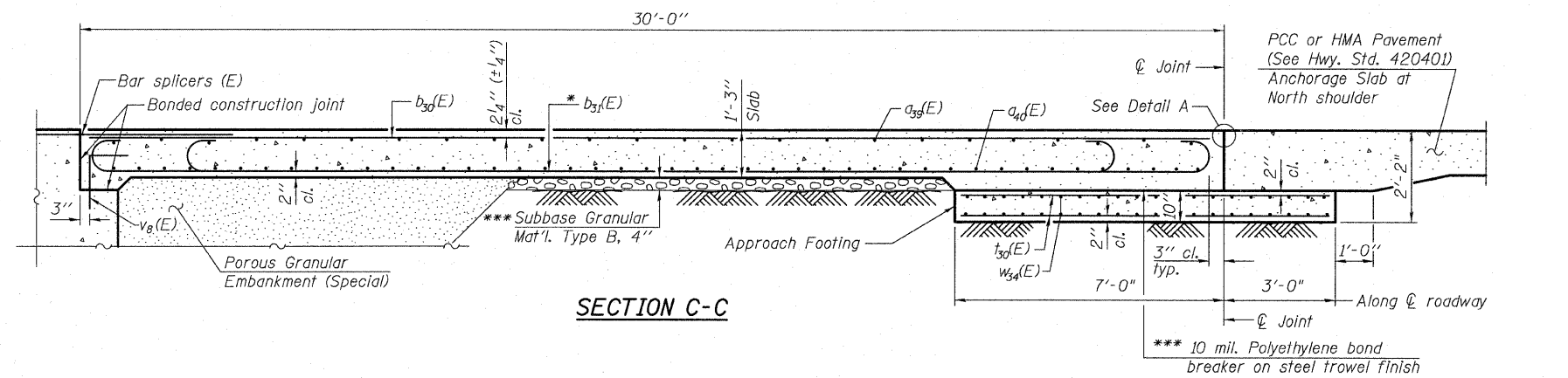


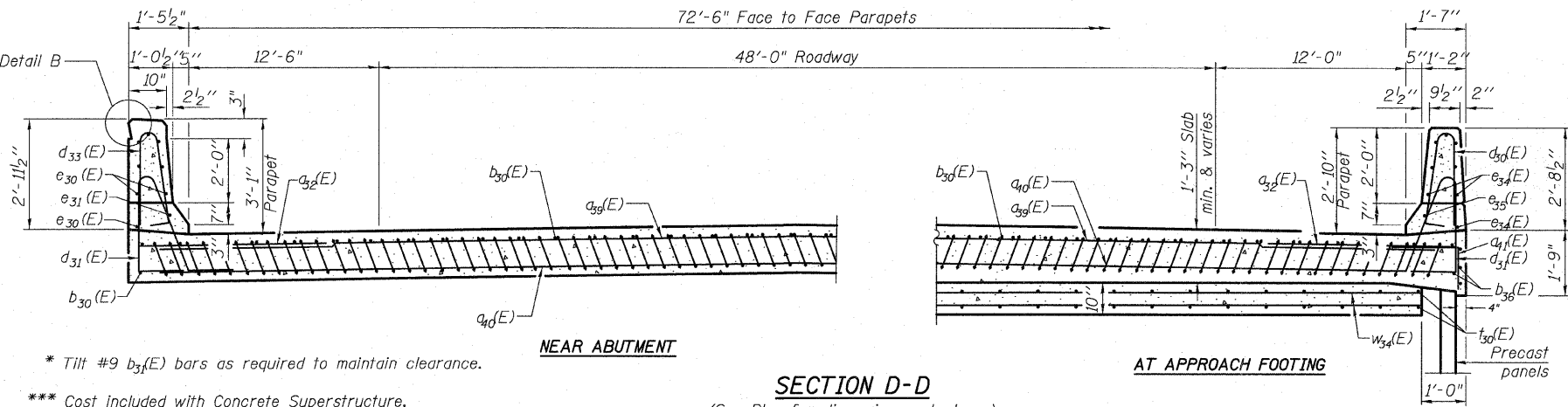
STATE OF ILLINOIS
DEPARTMENT OF TRANSPORTATION

Notes:
See sheet 33 of 68 for Detail A.
Approach slab and parapet concrete shall be paid for as Concrete Superstructure.
Approach footing concrete shall be paid for as Concrete Structures.
Reinforcement shall be paid for as Reinforcement Bars, Epoxy Coated.
For $v_8(E)$ bar details, see sheet 46 of 68.
The approach footing maximum applied service bearing pressure (Q_{max}) = 2.0 ksf.
For bar splicer details, see sheet 56 of 68.
Cost of excavation for approach footing included with Concrete Structures.
For Porous Granular Embankment (Special) and drainage treatment details, see sheet 2 of 68.

The quantity for Bridge Deck Grooving & Protective Coat for approach slab is included with the quantities on sheet 2 of 68.



SECTION C-C



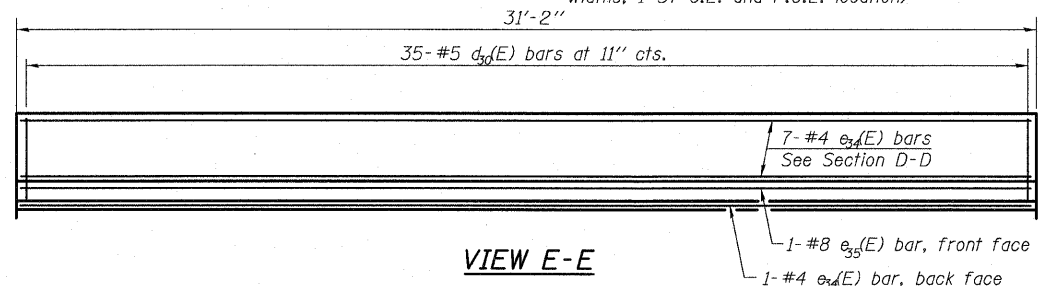
NEAR ABUTMENT

SECTION D-D

AT APPROACH FOOTING

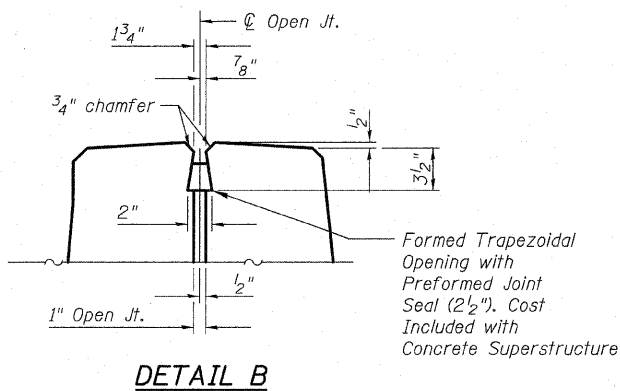
* Tilt #9 $b_{31}(E)$ bars as required to maintain clearance.
*** Cost included with Concrete Superstructure.

(See Plan for dimensions not shown)
(See Cross Slope Sketch below for lane widths, I-57 C.L. and P.G.L. location)

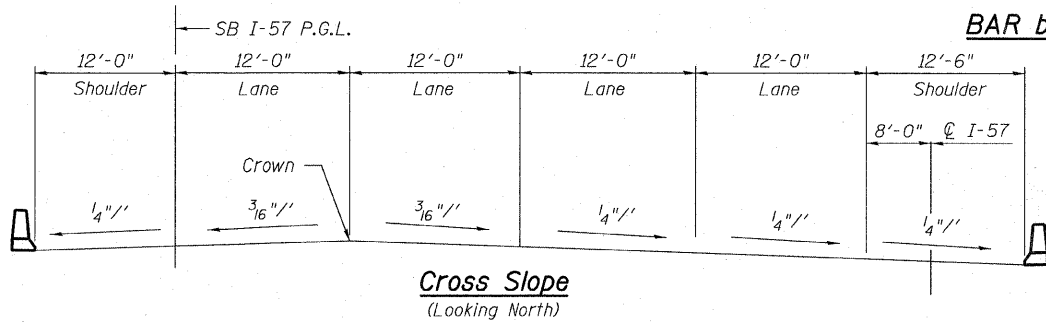


VIEW E-E

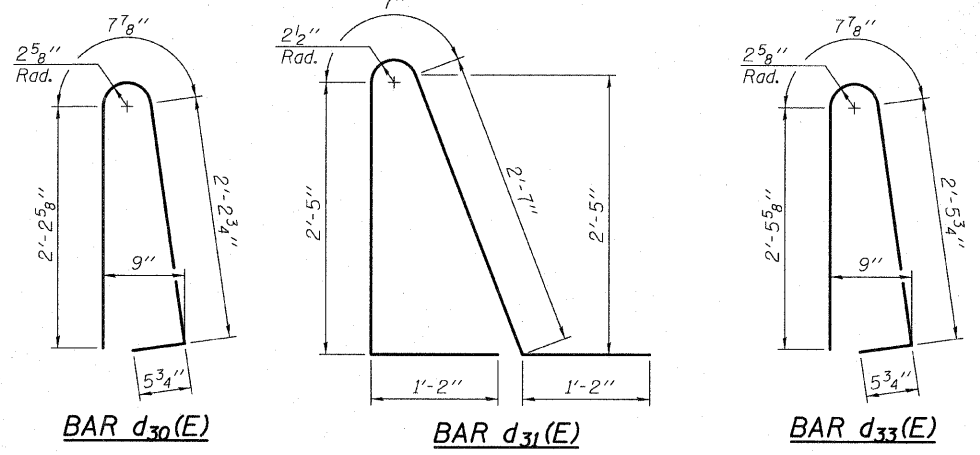
BAR a39(E)



DETAIL B



Cross Slope
(Looking North)



BAR d30(E)

BAR d31(E)

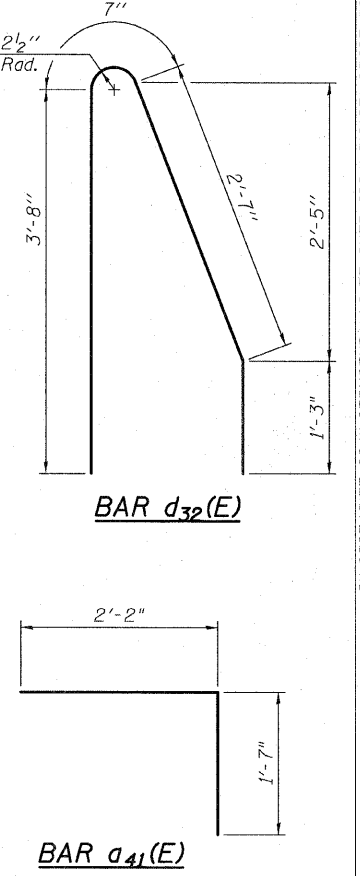
BAR d33(E)

BILL OF MATERIAL

Bar	No.	Size	Length	Shape
$a_{39}(E)$	75	#4	29'-2"	—
$a_{40}(E)$	92	#5	42'-5"	—
$a_{41}(E)$	50	#6	6'-6"	—
$a_{42}(E)$	25	#5	3'-9"	—
$b_{30}(E)$	62	#4	29'-8"	—
$b_{31}(E)$	181	#9	29'-9"	—
$b_{36}(E)$	4	#5	30'-10"	—
$d_{30}(E)$	35	#5	5'-7"	—
$d_{31}(E)$	70	#5	7'-11"	—
$d_{32}(E)$	2	#5	8'-1"	—
$d_{33}(E)$	35	#5	6'-1"	—
$e_{30}(E)$	8	#4	31'-3"	—
$e_{31}(E)$	1	#8	31'-3"	—
$e_{32}(E)$	8	#4	30'-10"	—
$e_{33}(E)$	1	#8	30'-10"	—
$t_{30}(E)$	152	#4	9'-8"	—
$w_{34}(E)$	120	#5	28'-8"	—
Concrete Superstructure		Cu. Yd.		113.4
Concrete Structures		Cu. Yd.		25.3
(1.) Reinforcement Bars, Epoxy Coated		Pound		31,830

(1.) 4,570 pounds billed in Substructure
Total in Total Bill of Material on Sheet 2

EAST APPROACH SLAB SB I-57 - 2
STRUCTURE NO. 016-1251



BAR d32(E)

BAR a41(E)

TYLIN INTERNATIONAL	DESIGNED - JMA	REVISIONS		SHEET NO. 34	F.A.I. RTE.	SECTION	COUNTY	TOTAL SHEETS	SHEET NO.					
	CHECKED - SP,	NAME	DATE							1414.2B	COOK	516	279	
	DRAWN - JMA													CONTRACT NO. 60J27
	CHECKED - SP,PDF													
	DATE - 03/18/10													

P:\60254\0167-294\STRUCTURAL\I-57_OVER_I294\0161251-60J27-034-E_APPR6.dwg

3/17/2010