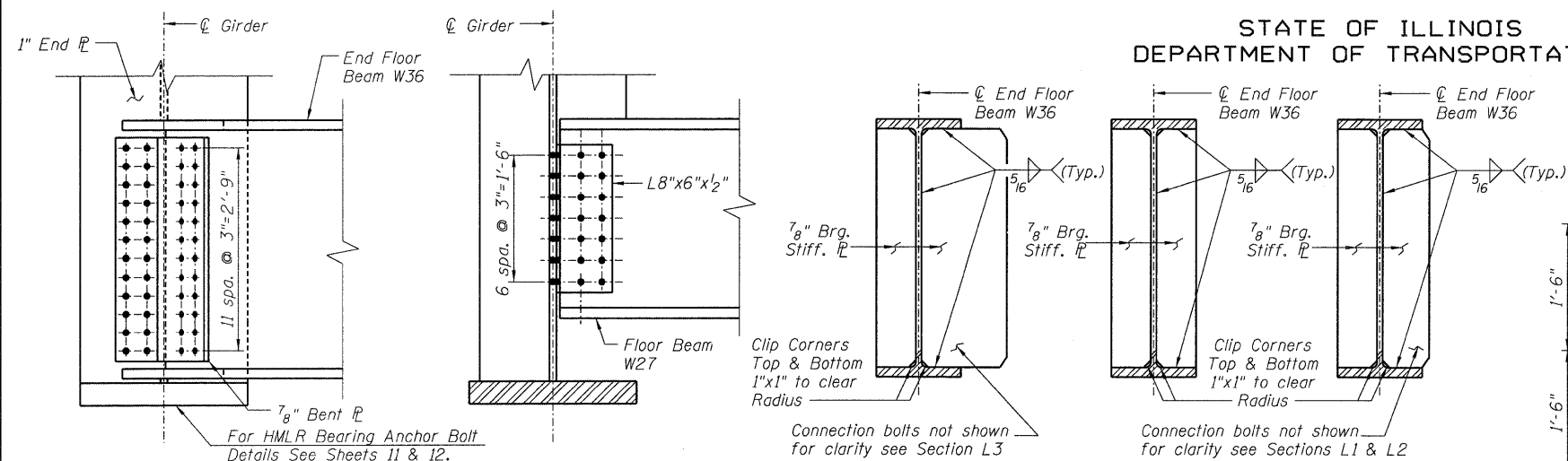


STATE OF ILLINOIS
DEPARTMENT OF TRANSPORTATION



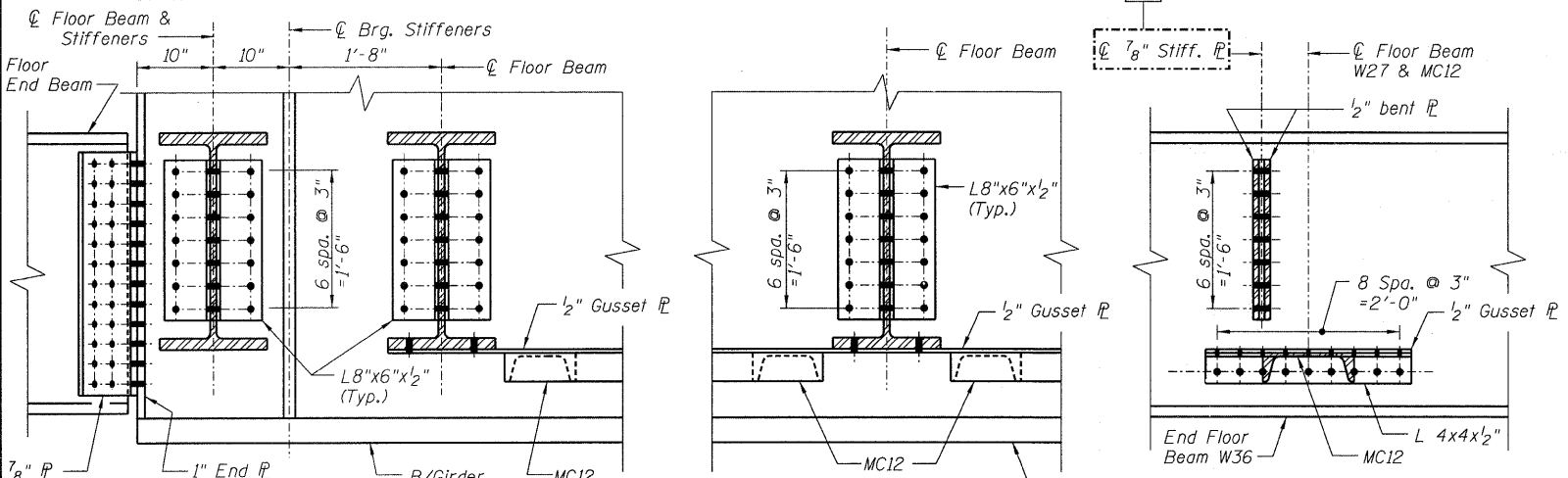
SECTION A-A
Scale: 1"=1'-0"

SECTION B-B
Scale: 1"=1'-0"

SECTION C-C
Scale: 1"=1'-0"

SECTION C1-C1
Scale: 1"=1'-0"

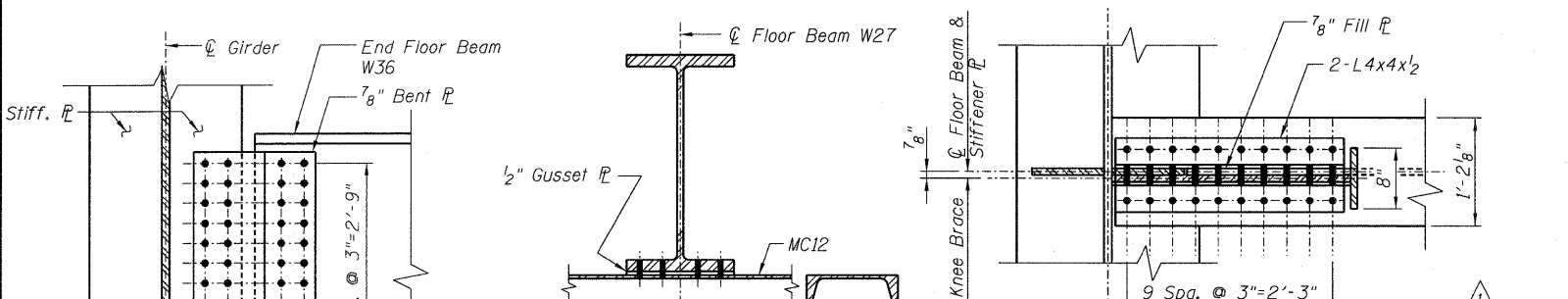
SECTION C2-C2
Scale: 1"=1'-0"



SECTION D-D
Scale: 1"=1'-0"

SECTION E-E
Scale: 1"=1'-0"

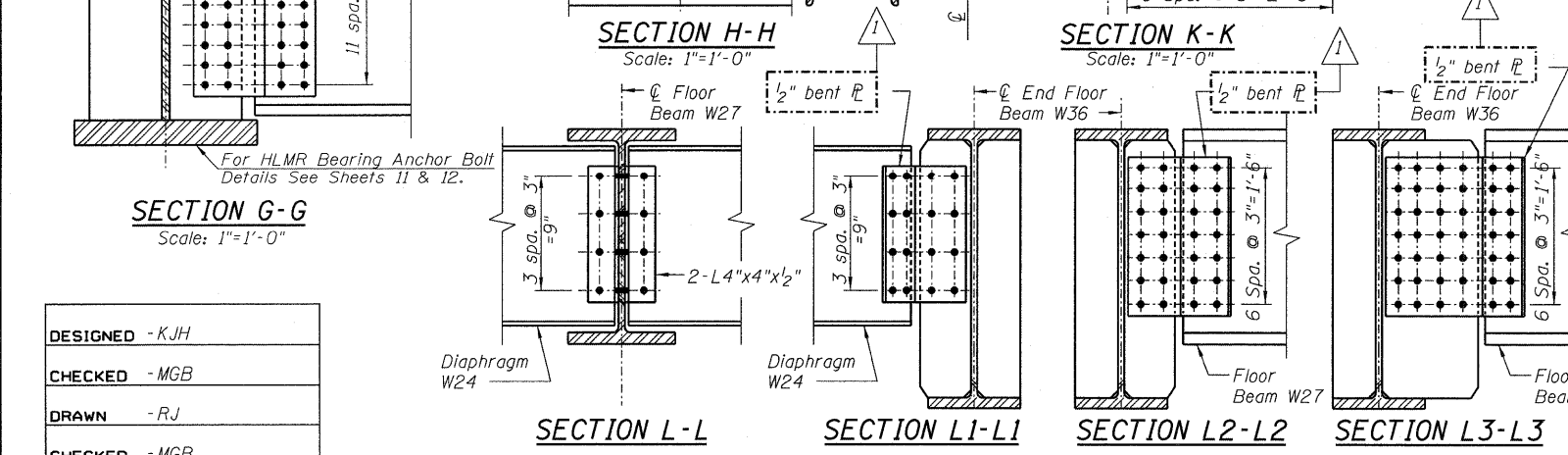
SECTION F-F
Scale: 1"=1'-0"



SECTION G-G
Scale: 1"=1'-0"

SECTION H-H
Scale: 1"=1'-0"

SECTION K-K
Scale: 1"=1'-0"

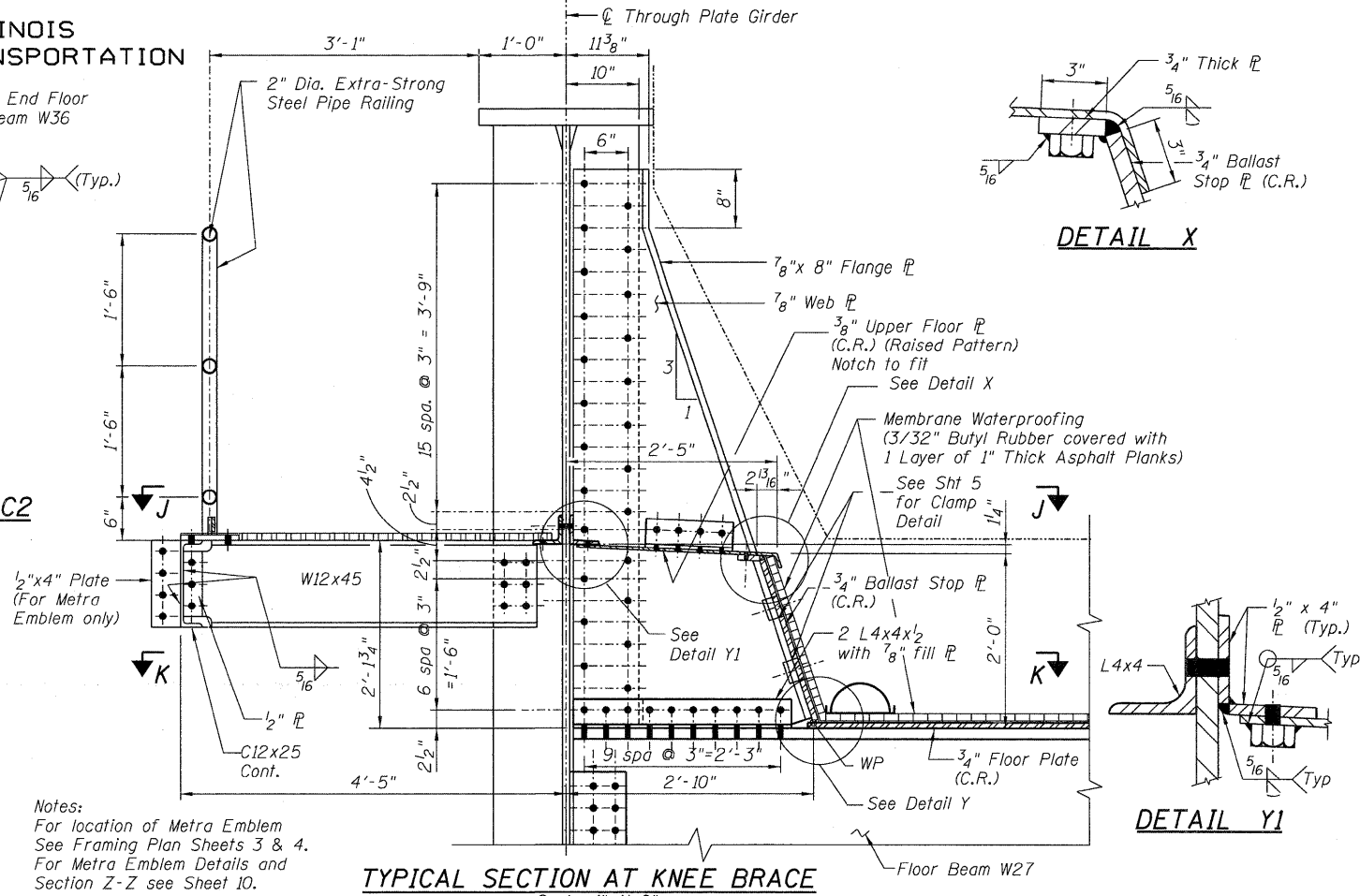


SECTION L-L

SECTION L1-L1

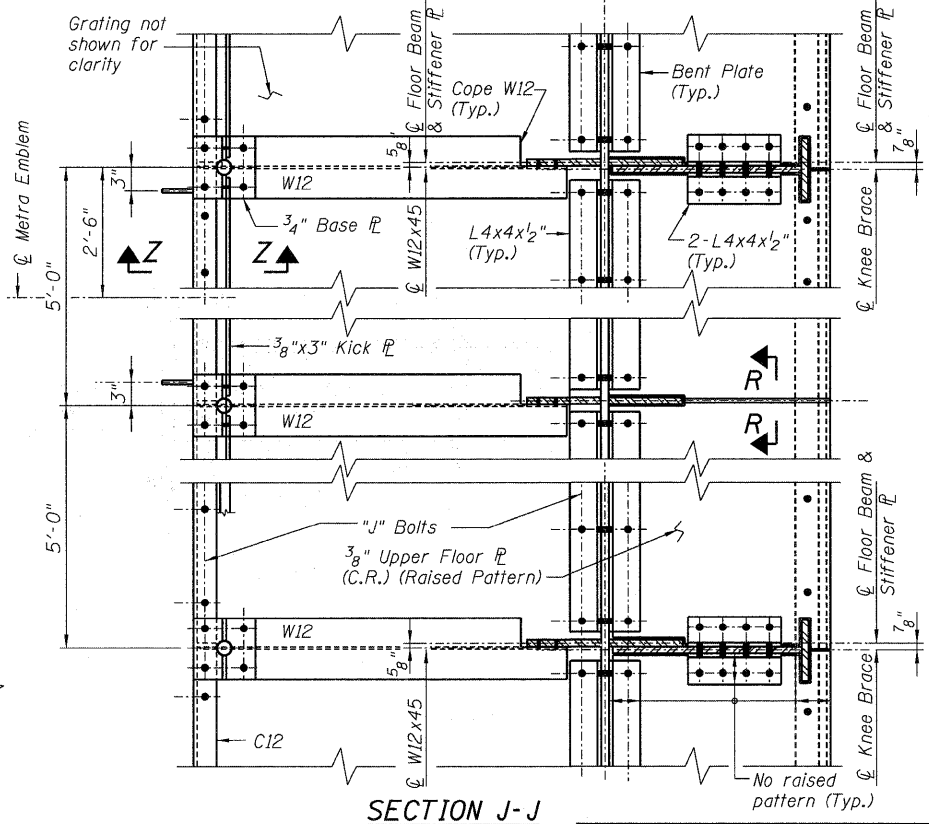
SECTION L2-L2

SECTION L3-L3

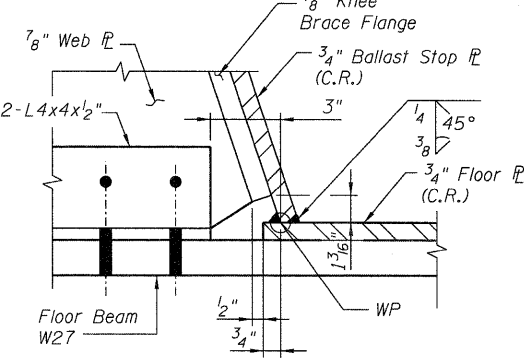


TYPICAL SECTION AT KNEE BRACE
Scale: 1"=1'-0"

Notes:
For location of Metra Emblem
See Framing Plan Sheets 3 & 4.
For Metra Emblem Details and
Section Z-Z see Sheet 10.



SECTION J-J



DETAIL X

DETAIL Y1

DETAIL Y

- NOTES:**
1. WP denotes Work Point.
 2. CR Denotes Corrosion Resistant Steel.
 3. FCM Denotes Fracture Critical Member.
 4. Work this drawing with Sheet 6.

DESIGNED - KJH
CHECKED - MGB
DRAWN - RJ
CHECKED - MGB

McDonough Associates Inc.
Engineers / Architects
130 East Randolph Street Chicago, Illinois 60601

SHEET NO. 7 13 SHEETS	F.A.P. RTE. 330	SECTION 2010-074-F	COUNTY COOK	TOTAL SHEETS 15	SHEET NO. 9
	CONTRACT NO. 60L60				
DATE: 08/12/10		ILLINOIS FED. AID PROJECT			

**STEEL DETAILS-3
STRUCTURE NO. 016-6201**