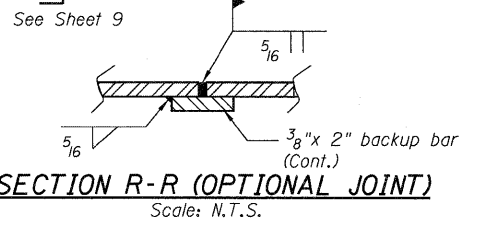
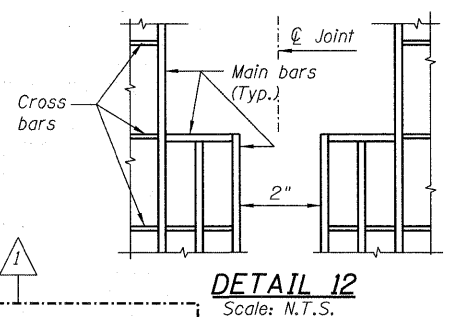
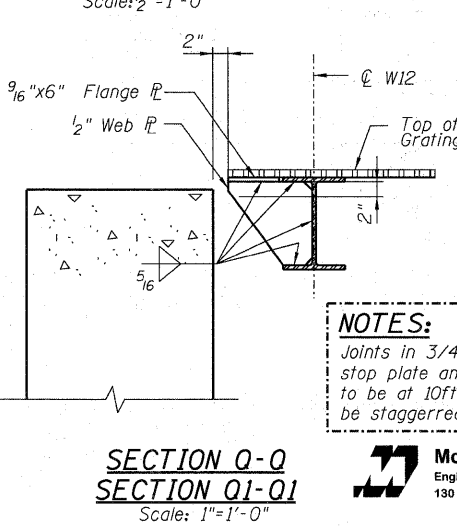
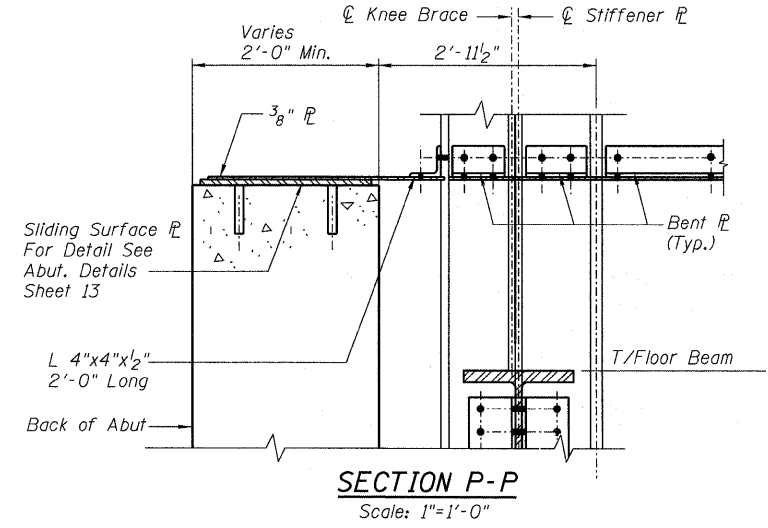
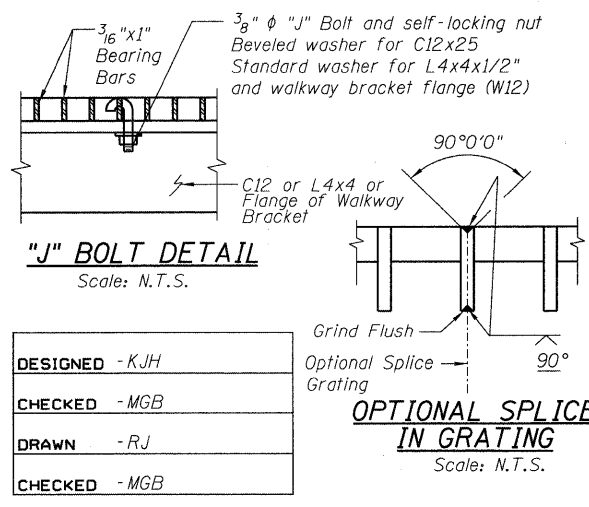
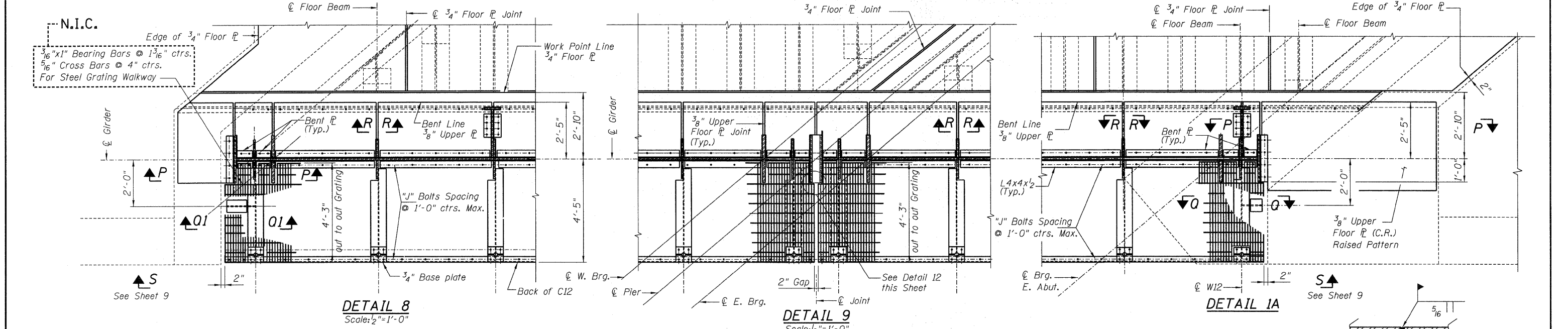
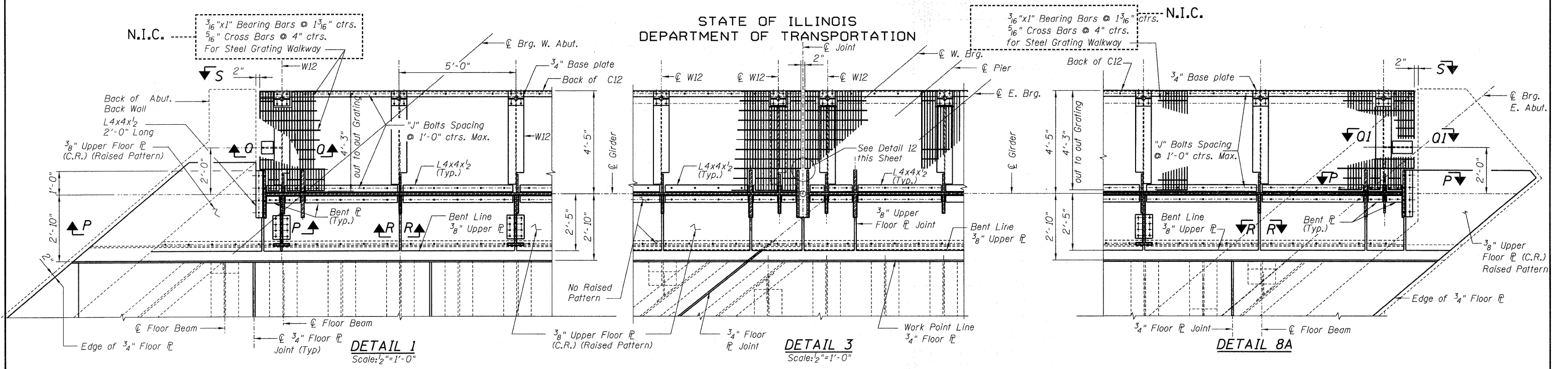


STATE OF ILLINOIS
DEPARTMENT OF TRANSPORTATION



NOTES:
Grating shall be bolted to longitudinal channel and along girder and walkway bracket by means of "J" bolts or other type of bolts Approved by the Engineer. Each panel shall have one bolt in each corner with a maximum longitudinal spacing of 1'-0" ctrs. between bolts. Drill 5/16" diameter holes for "J" bolts in field.
Work this Sheet with Sheet 3 and 4.

NOTES:
Joints in 3/4" floor plate and Ballast stop plate and 3/8" upper floor plate to be at 10ft max centers. Joints to be staggered in floor plate.

DESIGNED - KJH
CHECKED - MGB
DRAWN - RJ
CHECKED - MGB

SHEET NO. 8 13 SHEETS	F.A.P R.T.E.	SECTION	COUNTY	TOTAL SHEETS	SHEET NO.
	330	2010-074-F	COOK	15	10
DATE: 08/12/10 ILLINOIS FED. AID PROJECT CONTRACT NO. 60L60					

**STEEL DETAILS-4
STRUCTURE NO. 016-6201**

McDonough Associates Inc.
Engineers / Architects
130 East Randolph Street Chicago, Illinois 60601