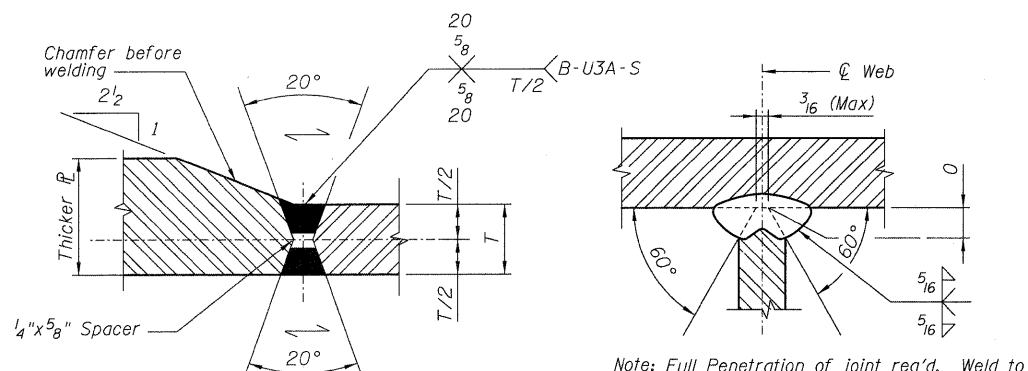


STATE OF ILLINOIS  
DEPARTMENT OF TRANSPORTATION

N.I.C.



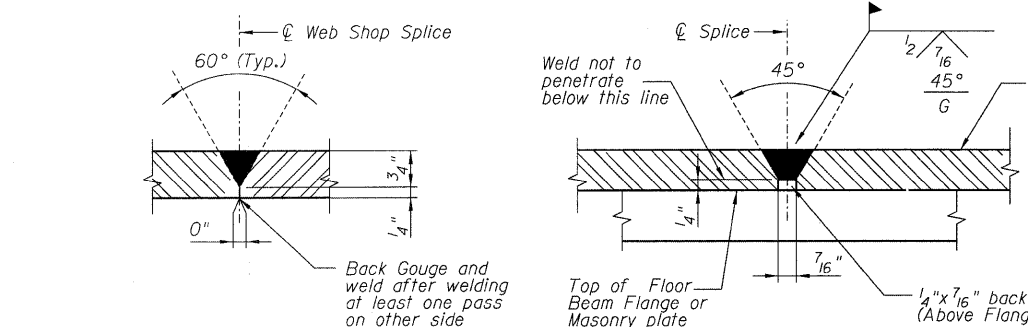
**FLANGE TO FLANGE WELD**

B-U3A-S  
Scale: N.T.S.

**FLANGE TO WEB WELD**

TC-U5-S  
Scale: N.T.S.

Note: Full Penetration of joint req'd. Weld to be symmetrical about  $\phi$  web. Excessive unbalance shall be cause for rejection. See Specs. for weld qualification. Gouge root to sound metal before welding second side. Grind flush both sides.

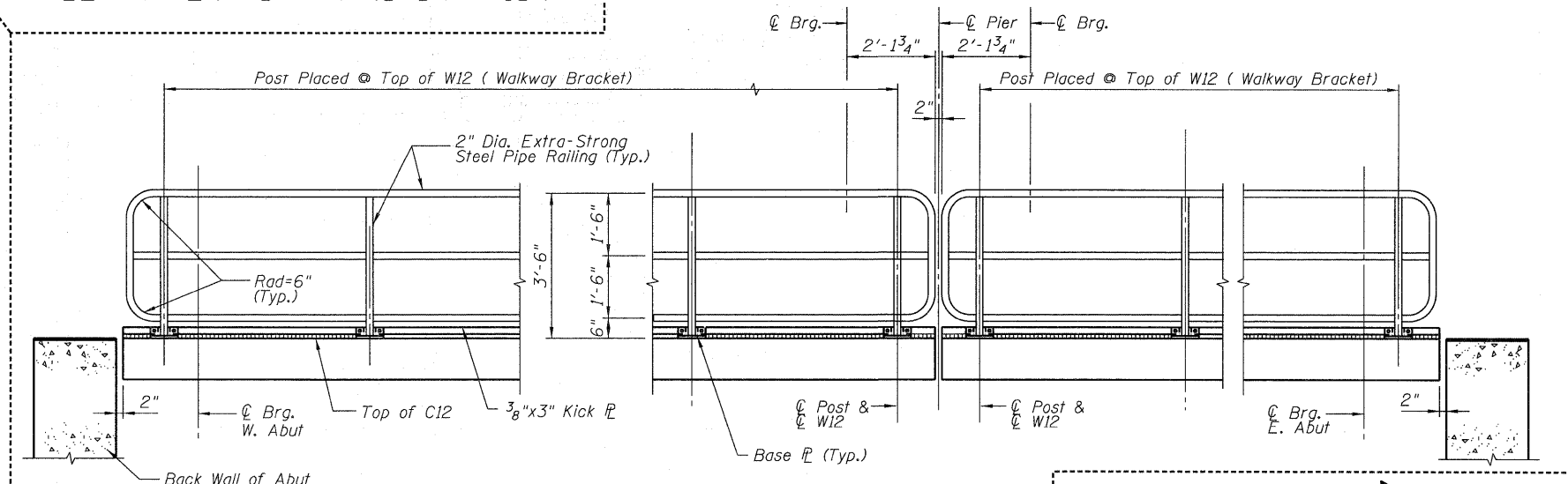


**WEB TO WEB BUTT WELD**

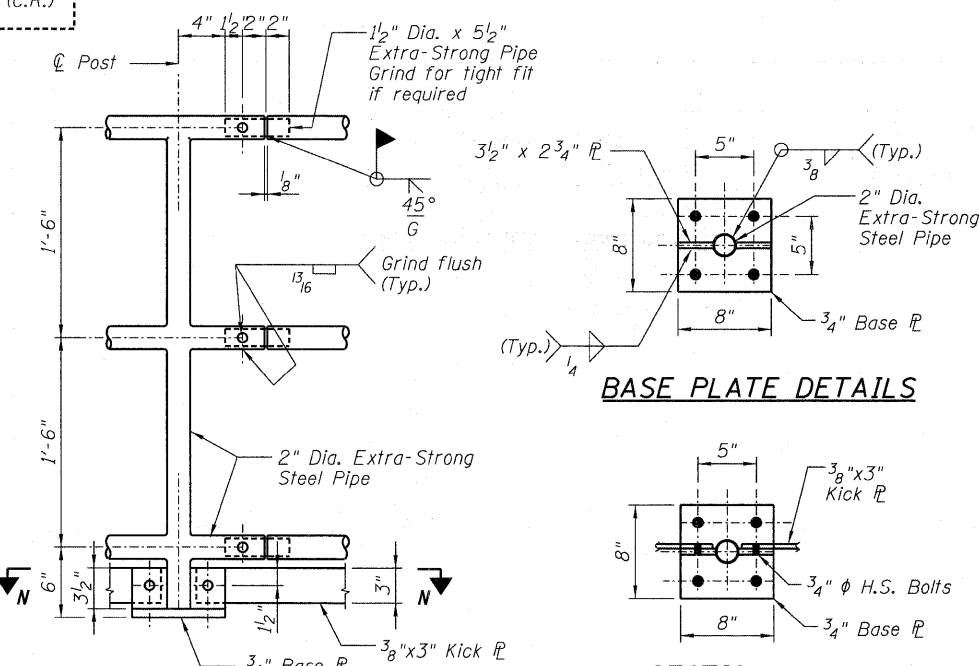
B-L2C-S  
Scale: N.T.S.

**FIELD SPLICE OVER BEAM FLANGE**

(If Required)  
Scale: N.T.S.

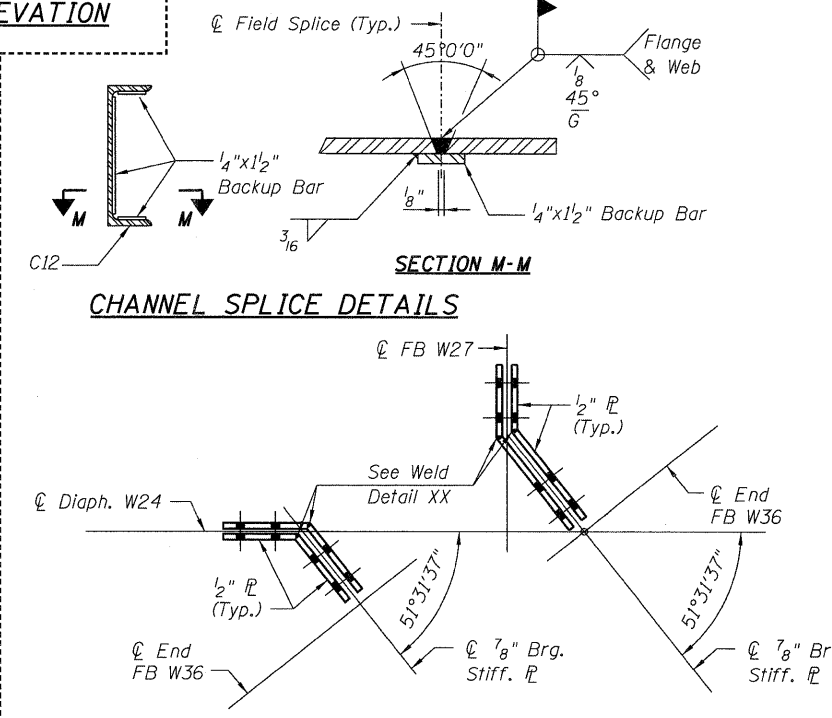


**SECTION S-S RAILING ELEVATION**

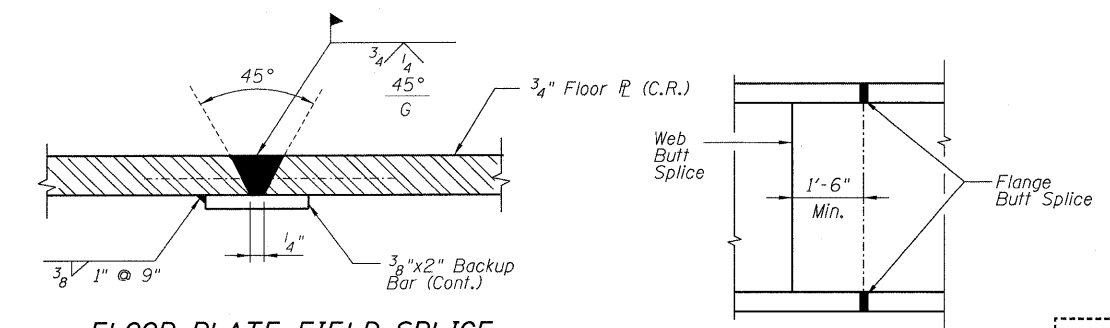


**RAILING SPLICE AND POST DETAILS**

**BASE PLATE DETAILS**



**CHANNEL SPLICE DETAILS**



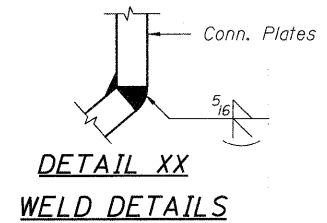
**FLOOR PLATE FIELD SPLICE**

**BALLAST STOP PLATE SPLICE SIMILAR**

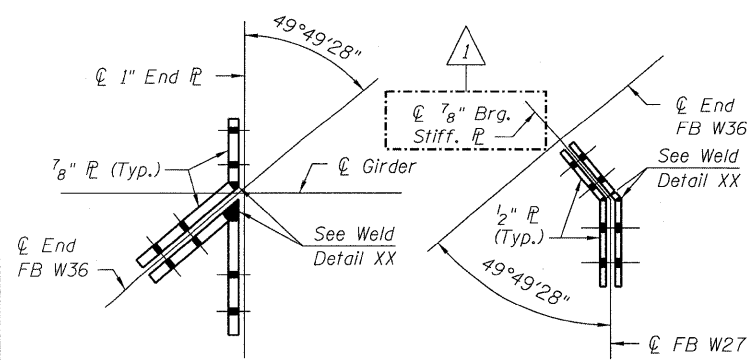
Scale: N.T.S.

**SPLICE DETAIL**

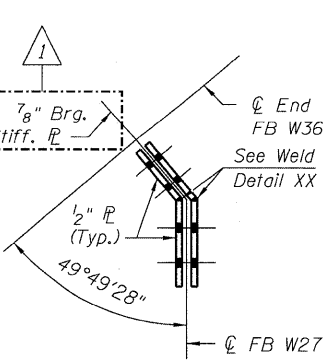
Scale: N.T.S.



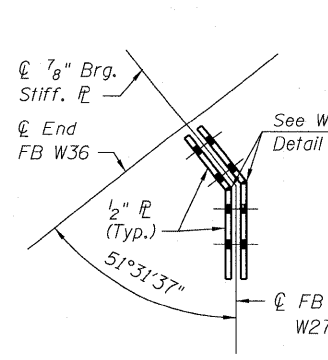
**DETAIL XX  
WELD DETAILS**



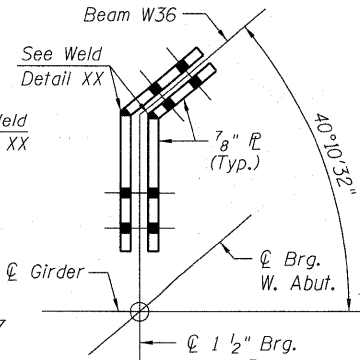
**CONN. PLATE-1**



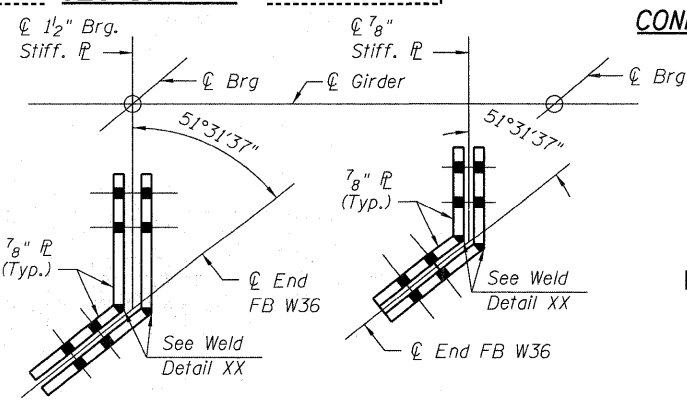
**CONN. PLATE-2**



**CONN. PLATE-2A**

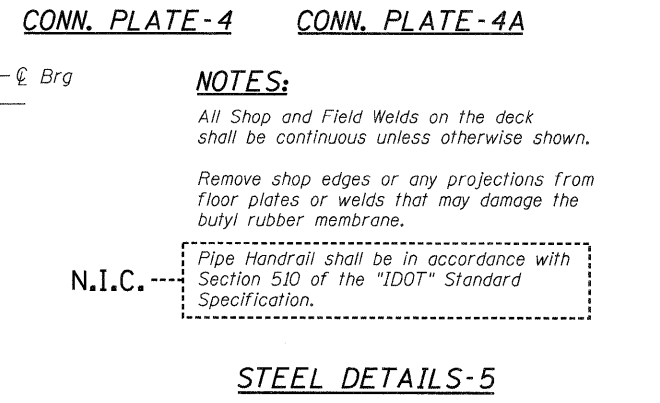


**CONN. PLATE-5**



**CONN. PLATE-3**

**CONN. PLATE-3A**



**CONN. PLATE-4**

**CONN. PLATE-4A**

**NOTES:**

All Shop and Field Welds on the deck shall be continuous unless otherwise shown.

Remove shop edges or any projections from floor plates or welds that may damage the butyl rubber membrane.

Pipe Handrail shall be in accordance with Section 510 of the "IDOT" Standard Specification.

N.I.C.

**STEEL DETAILS-5  
STRUCTURE NO. 016-6201**

DESIGNED - KJH
CHECKED - MGB
DRAWN - RJ
CHECKED - MGB

SHEET NO. 9 13 SHEETS	F.A.P. RTE. 330	SECTION 2010-074-F	COUNTY COOK	TOTAL SHEETS 15	SHEET NO. 11
	CONTRACT NO. 60L60				
DATE: 08/12/10		ILLINOIS FED. AID PROJECT			

**McDonough Associates Inc.**  
Engineers / Architects  
130 East Randolph Street Chicago, Illinois 60601