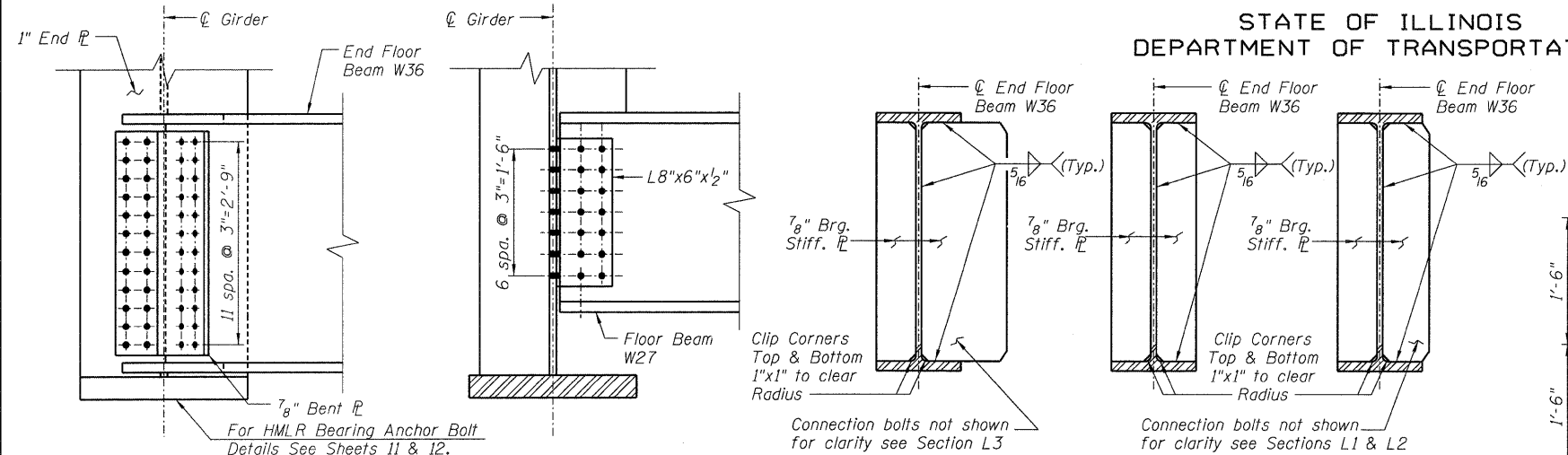


STATE OF ILLINOIS
DEPARTMENT OF TRANSPORTATION



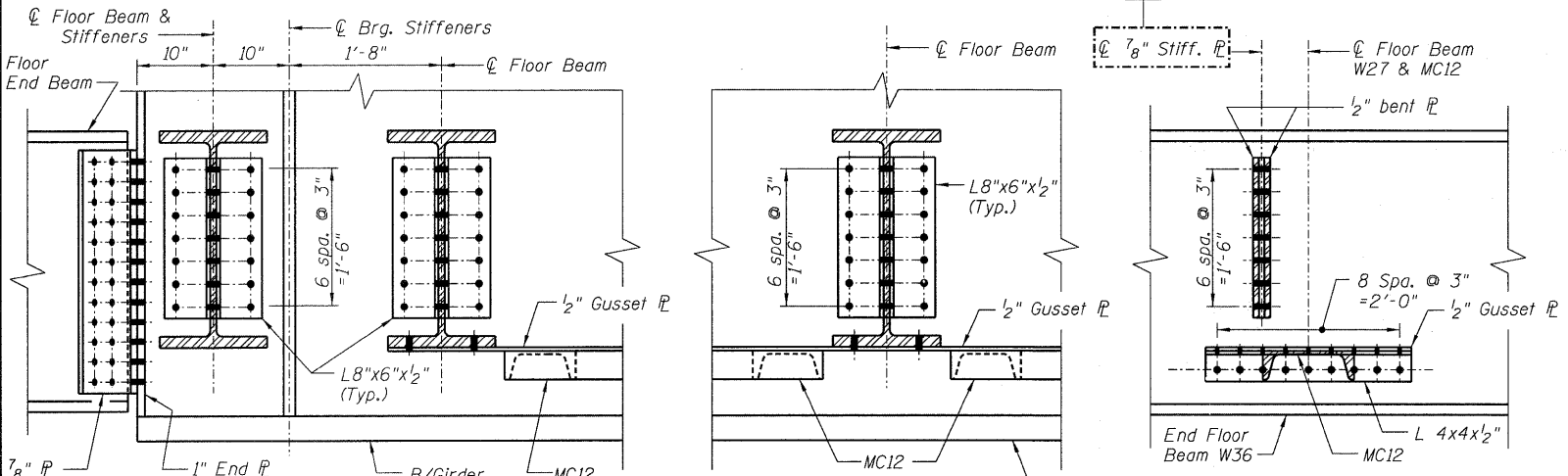
SECTION A-A
Scale: 1"=1'-0"

SECTION B-B
Scale: 1"=1'-0"

SECTION C-C
Scale: 1"=1'-0"

SECTION C1-C1
Scale: 1"=1'-0"

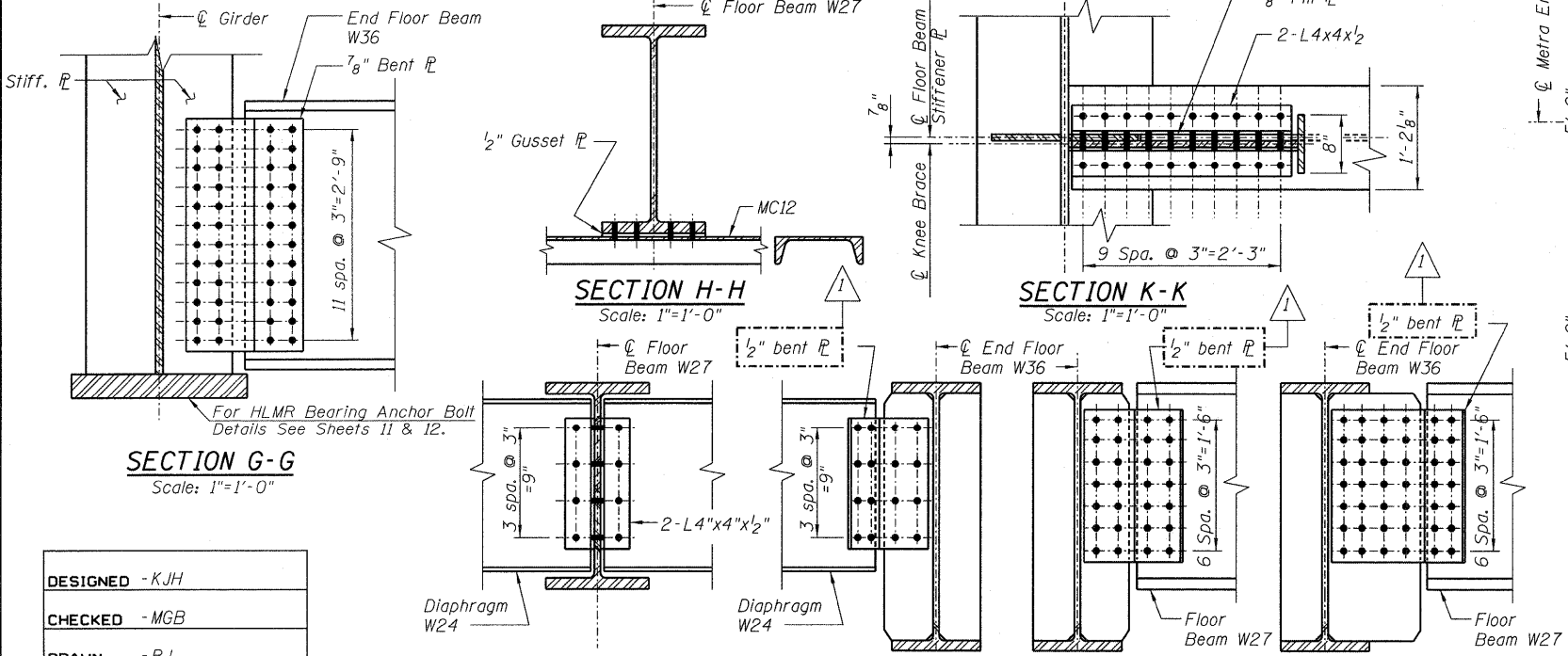
SECTION C2-C2
Scale: 1"=1'-0"



SECTION D-D
Scale: 1"=1'-0"

SECTION E-E
Scale: 1"=1'-0"

SECTION F-F
Scale: 1"=1'-0"



SECTION G-G
Scale: 1"=1'-0"

SECTION H-H
Scale: 1"=1'-0"

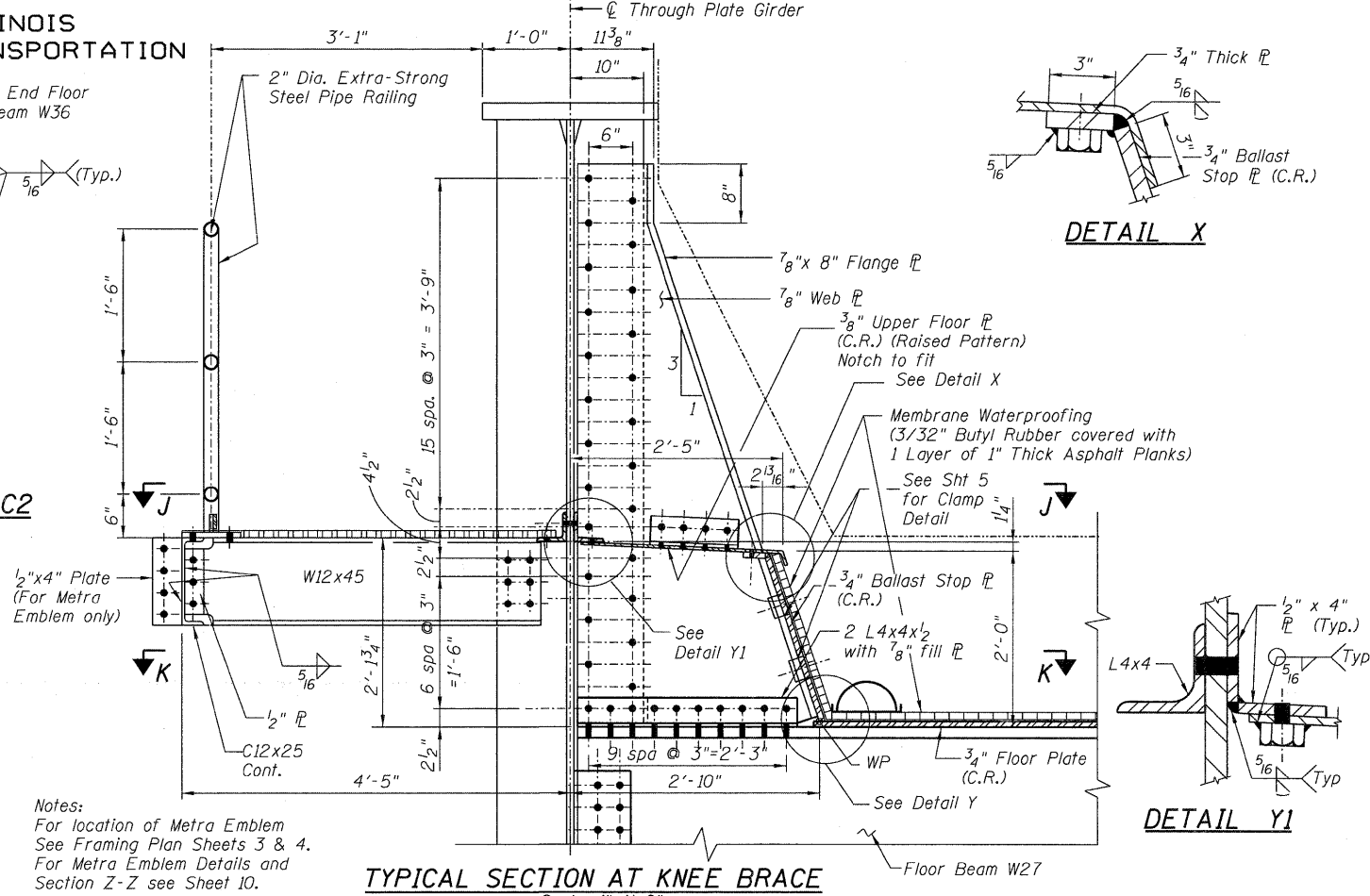
SECTION K-K
Scale: 1"=1'-0"

SECTION L-L

SECTION L1-L1

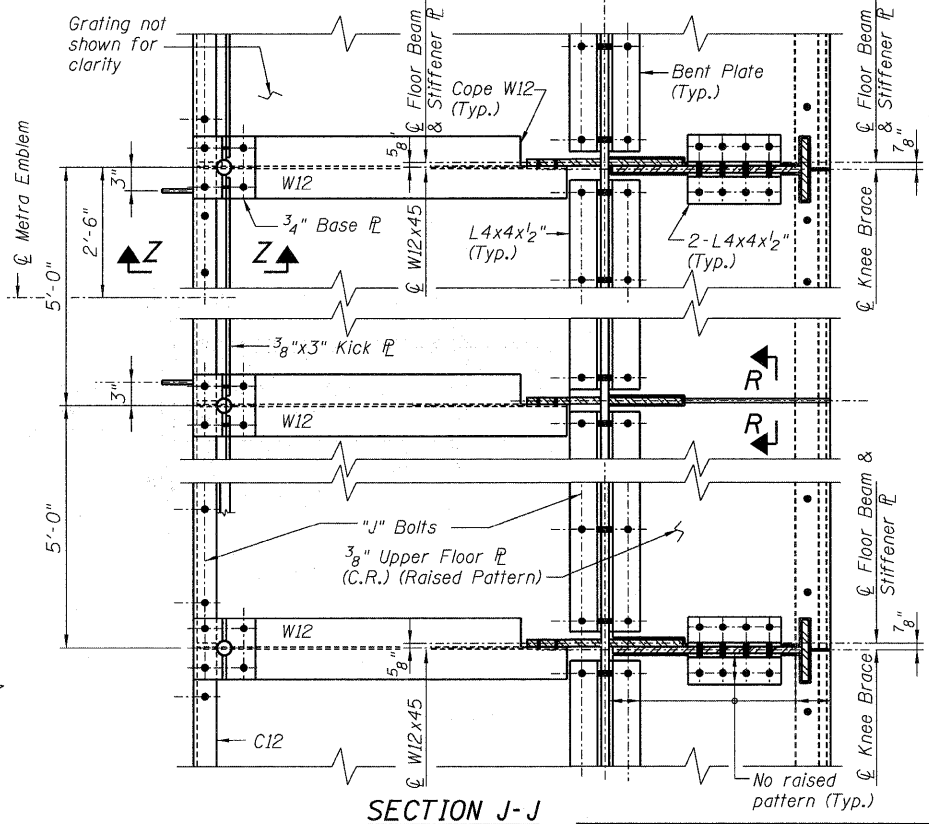
SECTION L2-L2

SECTION L3-L3

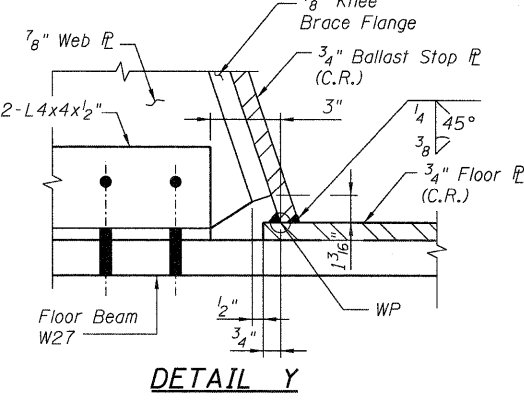


TYPICAL SECTION AT KNEE BRACE
Scale: 1"=1'-0"

Notes:
For location of Metra Emblem
See Framing Plan Sheets 3 & 4.
For Metra Emblem Details and
Section Z-Z see Sheet 10.



SECTION J-J



DETAIL X

DETAIL Y1

DETAIL Y

- NOTES:**
1. WP denotes Work Point.
 2. CR Denotes Corrosion Resistant Steel.
 3. FCM Denotes Fracture Critical Member.
 4. Work this drawing with Sheet 6.

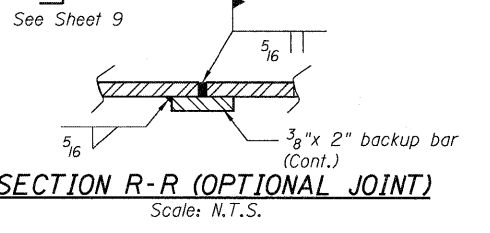
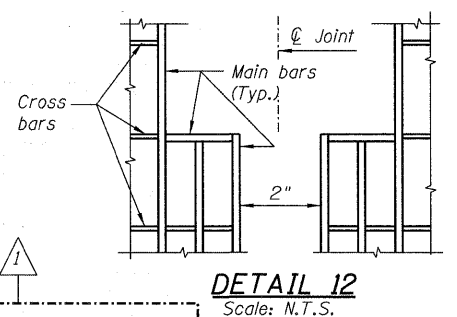
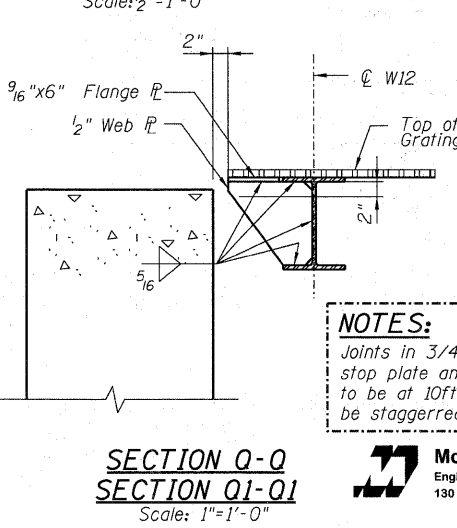
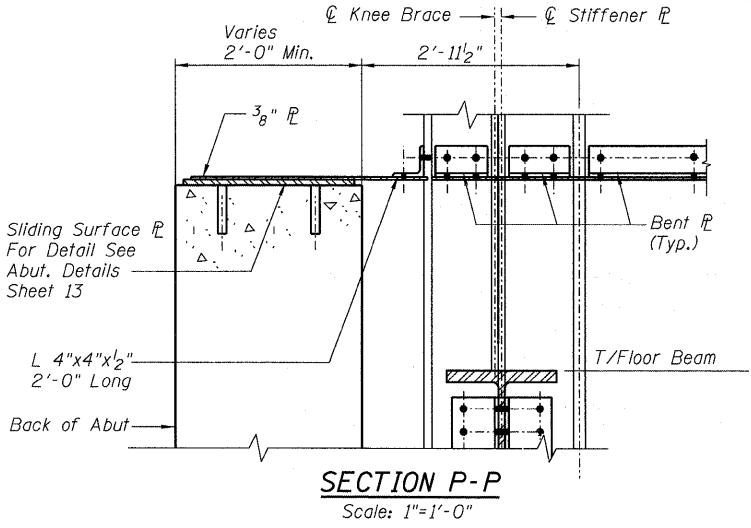
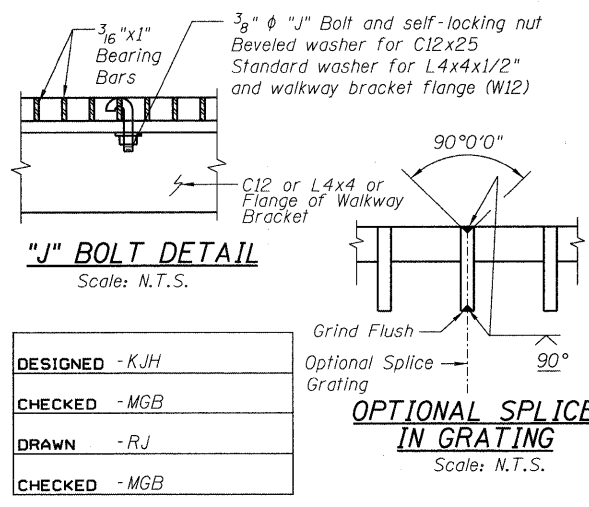
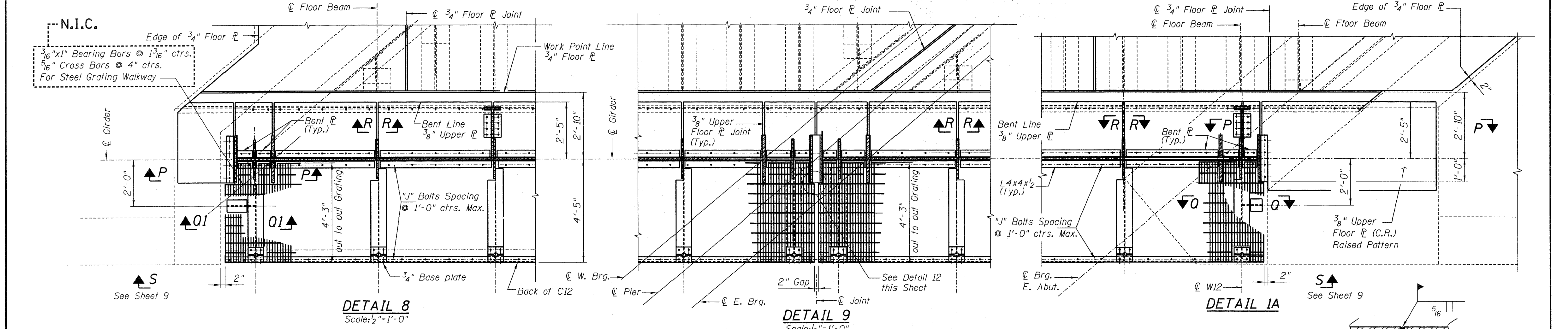
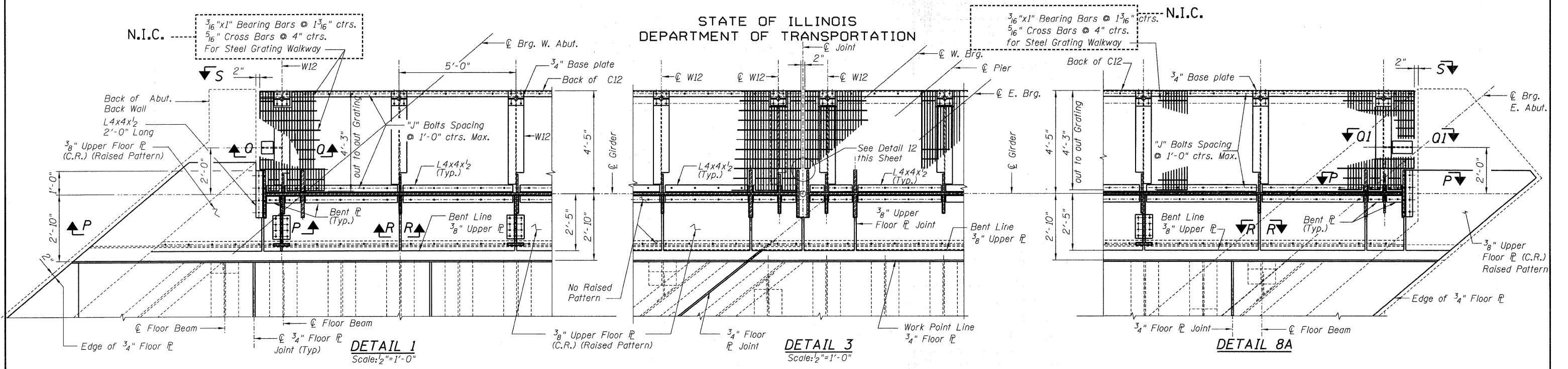
DESIGNED	- KJH
CHECKED	- MGB
DRAWN	- RJ
CHECKED	- MGB

McDonough Associates Inc.
Engineers / Architects
130 East Randolph Street Chicago, Illinois 60601

SHEET NO. 7 13 SHEETS	F.A.P RTE.	SECTION	COUNTY	TOTAL SHEETS	SHEET NO.
	330	2010-074-F	COOK	15	9
DATE: 08/12/10 ILLINOIS FED. AID PROJECT CONTRACT NO. 60L60					

**STEEL DETAILS-3
STRUCTURE NO. 016-6201**

STATE OF ILLINOIS
DEPARTMENT OF TRANSPORTATION



NOTES:
Grating shall be bolted to longitudinal channel and along girder and walkway bracket by means of "J" bolts or other type of bolts Approved by the Engineer. Each panel shall have one bolt in each corner with a maximum longitudinal spacing of 1'-0" ctrs. between bolts. Drill 5/16" diameter holes for "J" bolts in field.
Work this Sheet with Sheet 3 and 4.

NOTES:
Joints in 3/4" floor plate and Ballast stop plate and 3/8" upper floor plate to be at 10ft max centers. Joints to be staggered in floor plate.

DESIGNED - KJH
CHECKED - MGB
DRAWN - RJ
CHECKED - MGB

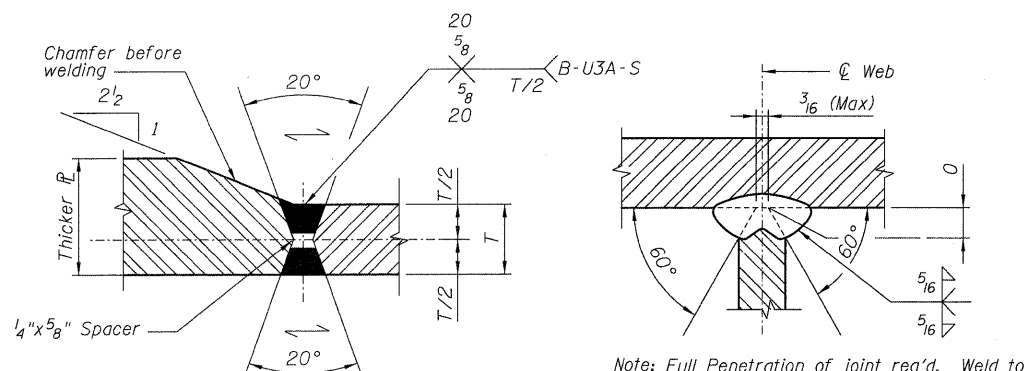
SHEET NO. 8 13 SHEETS	F.A.P R.T.E.	SECTION	COUNTY	TOTAL SHEETS	SHEET NO.
	330	2010-074-F	COOK	15	10
DATE: 08/12/10 ILLINOIS FED. AID PROJECT CONTRACT NO. 60L60					

**STEEL DETAILS-4
STRUCTURE NO. 016-6201**

McDonough Associates Inc.
Engineers / Architects
130 East Randolph Street Chicago, Illinois 60601

STATE OF ILLINOIS
DEPARTMENT OF TRANSPORTATION

N.I.C.



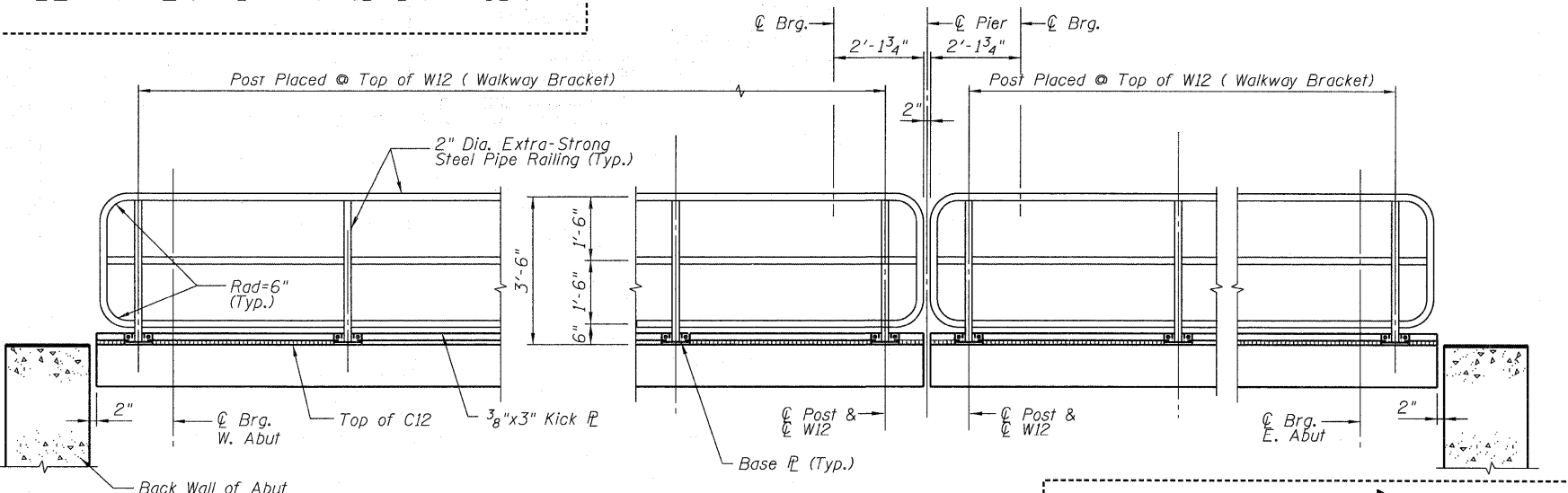
FLANGE TO FLANGE WELD

B-U3A-S
Scale: N.T.S.

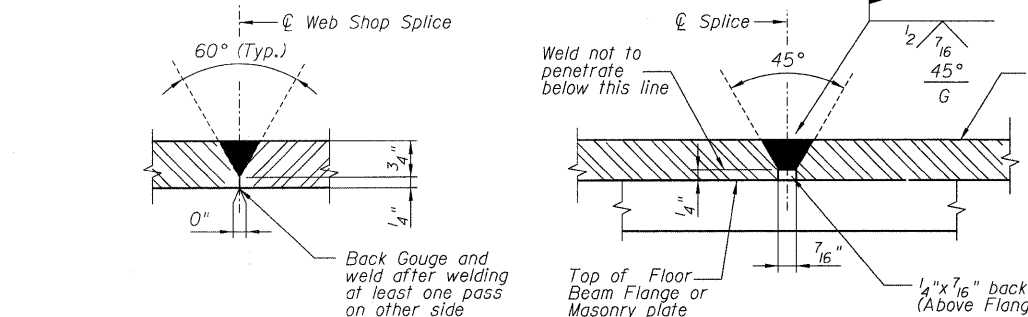
FLANGE TO WEB WELD

TC-U5-S
Scale: N.T.S.

Note: Full Penetration of joint req'd. Weld to be symmetrical about ϕ web. Excessive unbalance shall be cause for rejection. See Specs. for weld qualification. Gouge root to sound metal before welding second side. Grind flush both sides.



SECTION S-S RAILING ELEVATION

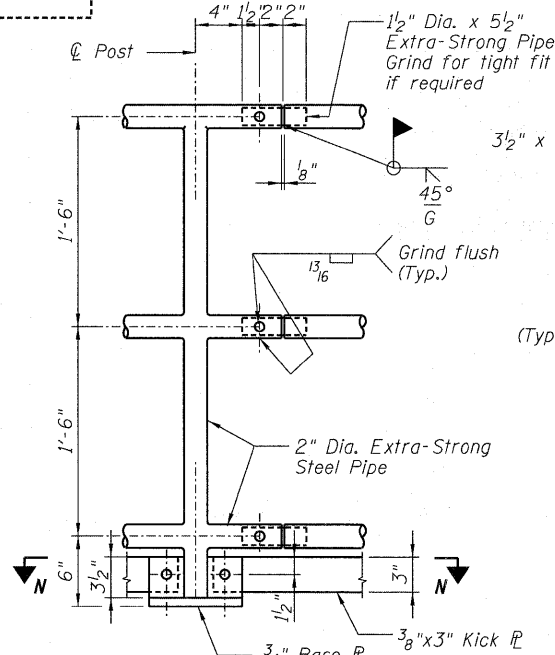


WEB TO WEB BUTT WELD

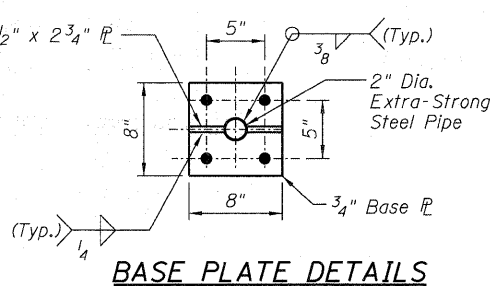
B-L2C-S
Scale: N.T.S.

FIELD SPLICE OVER BEAM FLANGE

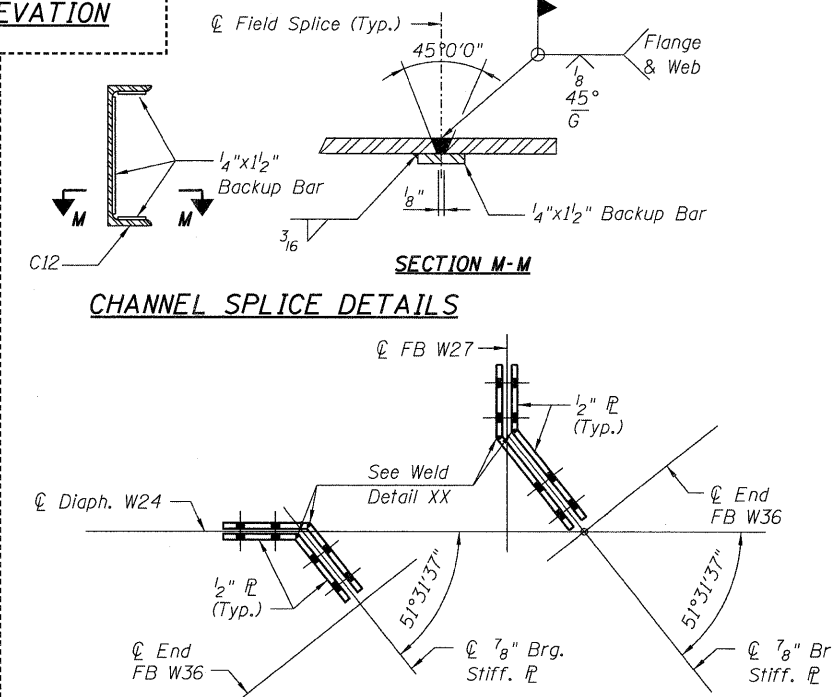
(If Required)
Scale: N.T.S.



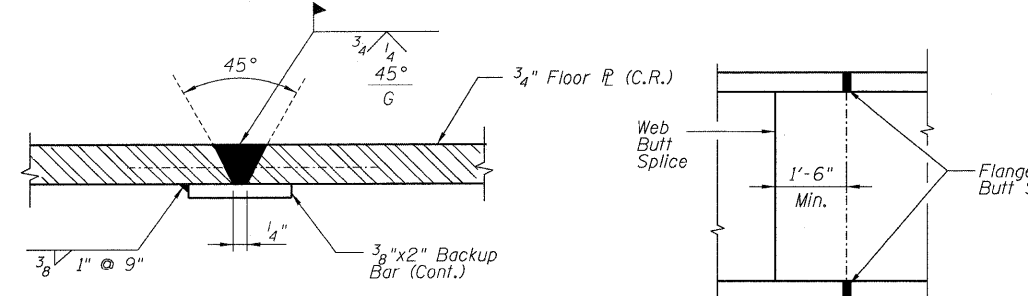
RAILING SPLICE AND POST DETAILS



BASE PLATE DETAILS



CHANNEL SPLICE DETAILS



FLOOR PLATE FIELD SPLICE
BALLAST STOP PLATE SPLICE SIMILAR

Scale: N.T.S.

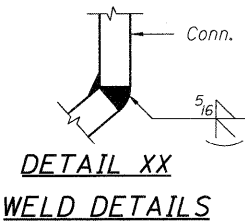
SPLICE DETAIL

Scale: N.T.S.

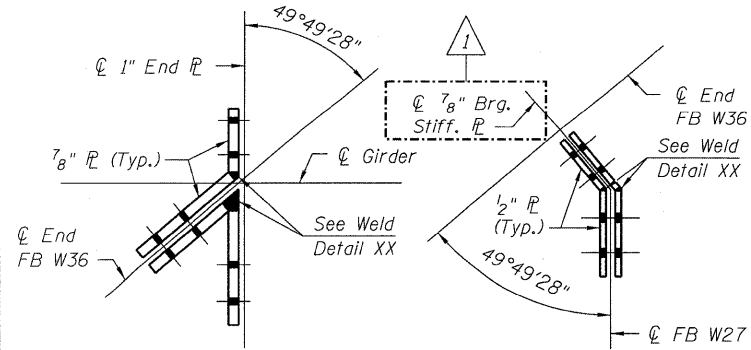
SECTION N-N

CONN. PLATE-4

CONN. PLATE-4A

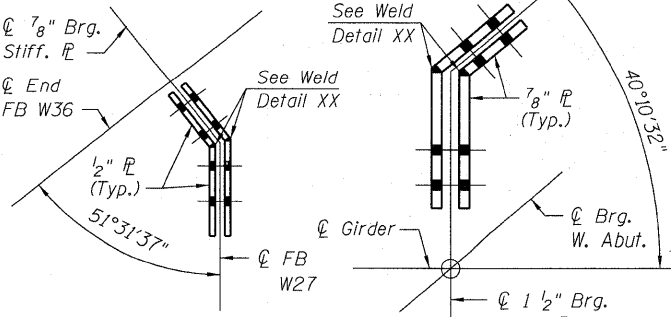


DETAIL XX
WELD DETAILS



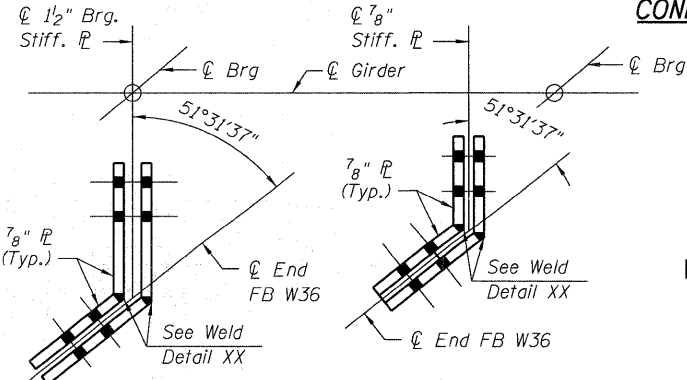
CONN. PLATE-1

CONN. PLATE-2



CONN. PLATE-2A

CONN. PLATE-5



CONN. PLATE-3

CONN. PLATE-3A

NOTES:
All Shop and Field Welds on the deck shall be continuous unless otherwise shown.
Remove shop edges or any projections from floor plates or welds that may damage the butyl rubber membrane.

N.I.C. --- Pipe Handrail shall be in accordance with Section 510 of the "IDOT" Standard Specification.

STEEL DETAILS-5
STRUCTURE NO. 016-6201

DESIGNED - KJH
CHECKED - MGB
DRAWN - RJ
CHECKED - MGB

SHEET NO. 9 13 SHEETS	F.A.P. RTE. 330	SECTION 2010-074-F	COUNTY COOK	TOTAL SHEETS 15	SHEET NO. 11
	CONTRACT NO. 60L60				
DATE: 08/12/10		ILLINOIS FED. AID PROJECT			

McDonough Associates Inc.
Engineers / Architects
130 East Randolph Street Chicago, Illinois 60601