

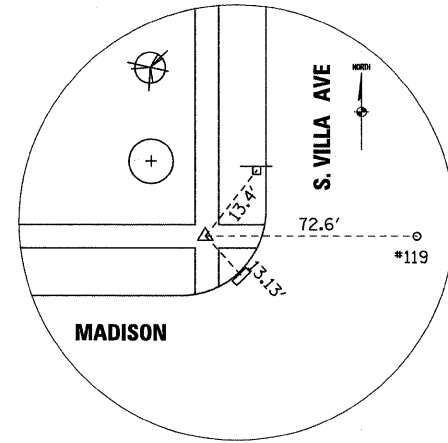
**CONTROL SET**

- CP 100 FND. CUT "X" NW QUAD OF MADISON AND S. VILLA AVE
- CP 101 SET 24"-5/8 REBAR W/CAP - NW QUAD OF WASHINGTON AND S. VILLA AVE
- CP 102 SET "MAG" @ CL OF S. VILLA AVE AND CL OF WASHINGTON ST
- CP 103 SET "MAG" @ CL OF S. VILLA AVE AND CL OF HIGHLAND AVE
- CP 104 SET 24"-5/8 REBAR W/CAP - SE QUAD OF HIGHLAND AVE AND S. VILLA AVE
- CP 105 SET "MAG" @ INTERSECTION OF S. VILLA AVE AND CRESCENT DR
- CP 106 SET 24"-5/8 REBAR W/CAP @ SE QUAD OF PARK BLVD AND S. VILLA AVE
- CP 107 SET "MAG" @ INTERSECTION OF CENTRAL BLVD AND S. VILLA AVE
- CP 108 SET "MAG" @ INTERSECTION OF KENILWORTH AND S. VILLA AVE
- CP 109 FND. CUT "X" // NW QUAD OF KENILWORTH AND S. VILLA AVE
- CP 111 SET "MAG" @ INTERSECTION OF WILDWOOD AVE AND S. VILLA AVE
- CP 113 FND. CUT "X" NW QUAD OF WILDWOOD AVE AND S. VILLA AVE

**BENCHMARK:**

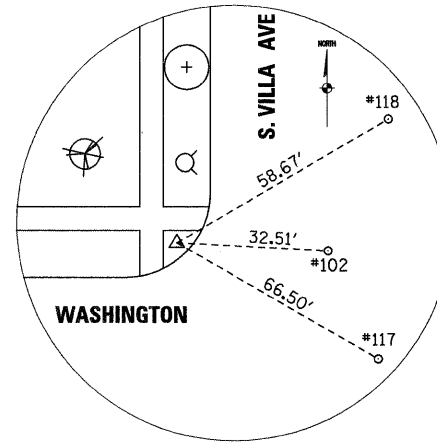
- FEMA RM3 CUT "X" ON TOP OF NW CORNER OF CONCRETE WINGWALL OF SOUTH VILLA AVE BRIDGE OVER SUGAR CREEK ELEV = 663.67
- BM #13 FIRE HYDRANT @ 726 VILLA AVENUE, W. FLANGE BOLT, SOUTHERN MOST ELEV = 684.18
- BM #20 FIRE HYDRANT @ SW CORNER OF S. VILLA AVE. & PARK BLVD., WEST FLANGE BOLT, SOUTHERN MOST ELEV = 679.25
- BM #24 FIRE HYDRANT @ 300' SOUTH OF S. VILLA AVE. & ST. CHARLES RD. IN WEST ROW, W. FLANGE BOLT, SOUTHERN MOST ELEV = 676.74

NOTE: ALL ELEVATIONS REFER TO THE NAVD 88 VERTICAL DATUM



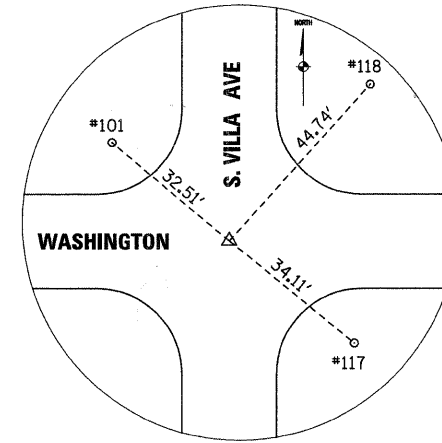
**CP100**

N= 1,897,391.055  
E= 1,083,439.236  
EL= 680.63



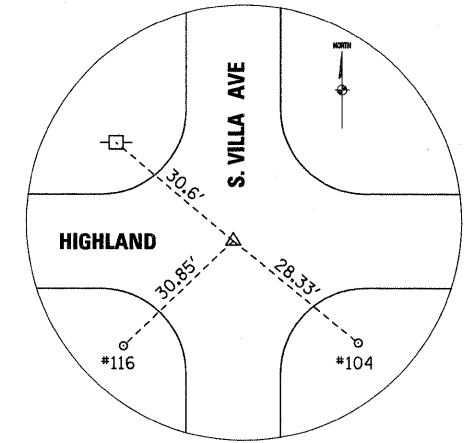
**CP101**

N= 1,898,718.446  
E= 1,083,425.251  
EL= 680.62



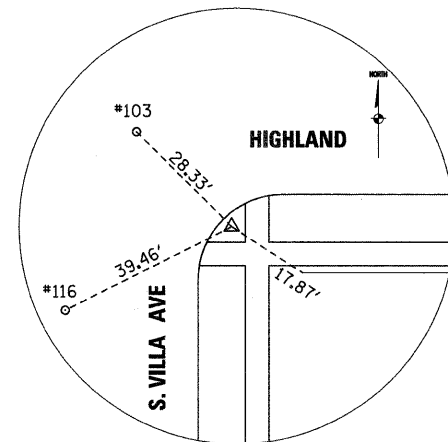
**CP102**

N= 1,898,697.995  
E= 1,083,450.522  
EL= 681.16



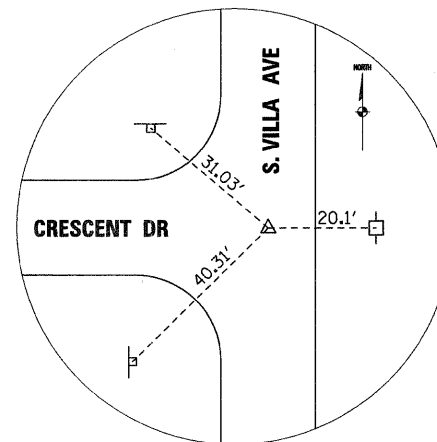
**CP103**

N= 1,900,029.692  
E= 1,083,433.941  
EL= 683.88



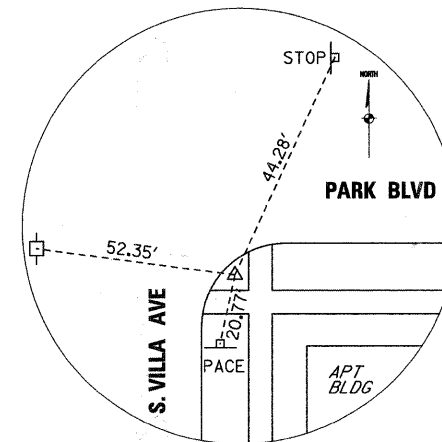
**CP104**

N= 1,900,009.003  
E= 1,083,453.299  
EL= 684.01



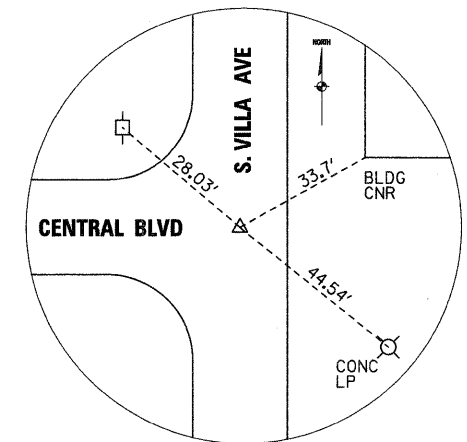
**CP105**

N= 1,900,905.475  
E= 1,083,422.532  
EL= 676.33



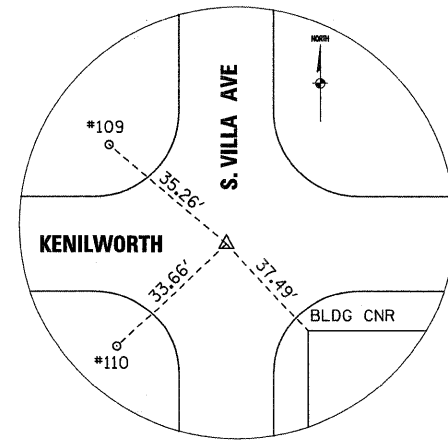
**CP106**

N= 1,901,121.095  
E= 1,083,442.440  
EL= 677.31



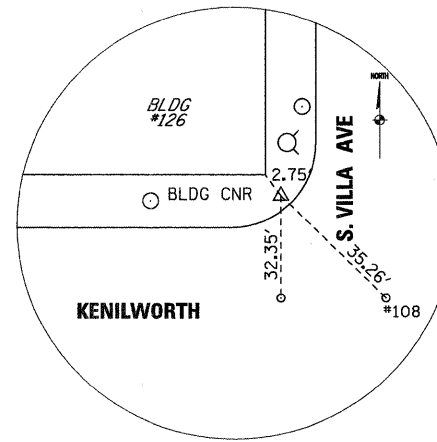
**CP107**

N= 1,901,290.598  
E= 1,083,417.888  
EL= 679.85



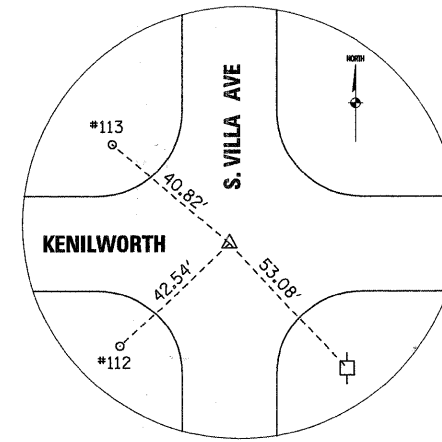
**CP108**

N= 1,901,487.795  
E= 1,083,415.803  
EL= 677.33



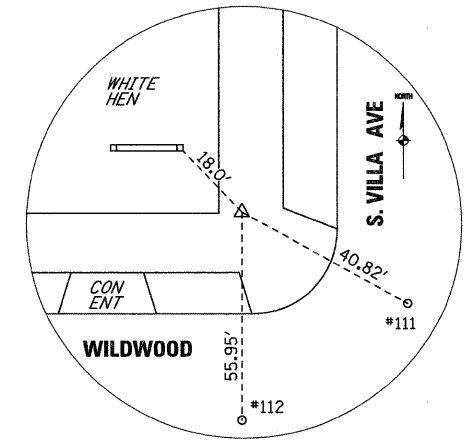
**CP109**

N= 1,901,504.367  
E= 1,083,384.676  
EL= 677.40



**CP111**

N= 1,901,980.165  
E= 1,083,410.147  
EL= 674.59



**CP113**

N= 1,902,006.536  
E= 1,083,378.988  
EL= 675.08



FILE NAME = 017\_6501ue02.dgn  
USER NAME = #USER#  
PLOT SCALE = 1:1  
PLOT DATE = 6/15/2010

DESIGNED - J.G.	REVISED -
DRAWN - E.D.	REVISED -
CHECKED -	REVISED -
DATE - 9/23/2009	REVISED -

**VILLAGE OF VILLA PARK, ILLINOIS**

**ALIGNMENT, TIES AND BENCHMARKS**  
SCALE: NO SCALE SHEET NO. 2 OF 2 SHEETS STA. 63+19.78 TO STA. 116+71.35

F.A. U. RTE. 2652	SECTION 00-0070-00-PV	COUNTY DuPAGE	TOTAL SHEETS 160	SHEET NO. 17
FED. ROAD DIST. NO. ILLINOIS FED. AID PROJECT			CONTRACT NO. 63379	