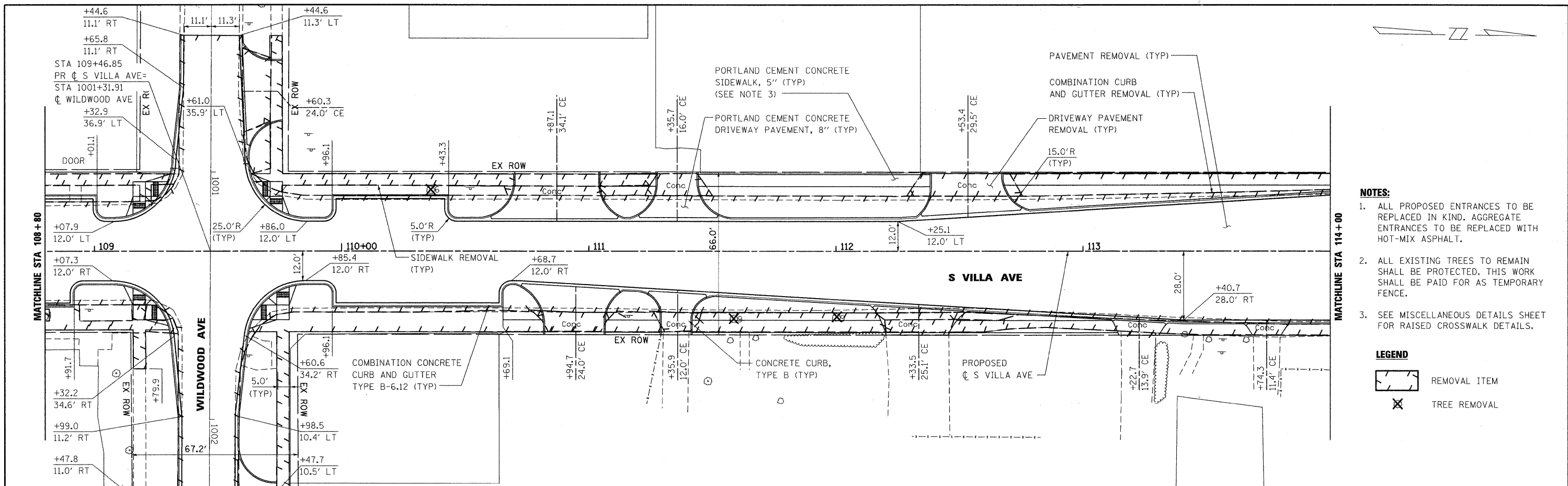


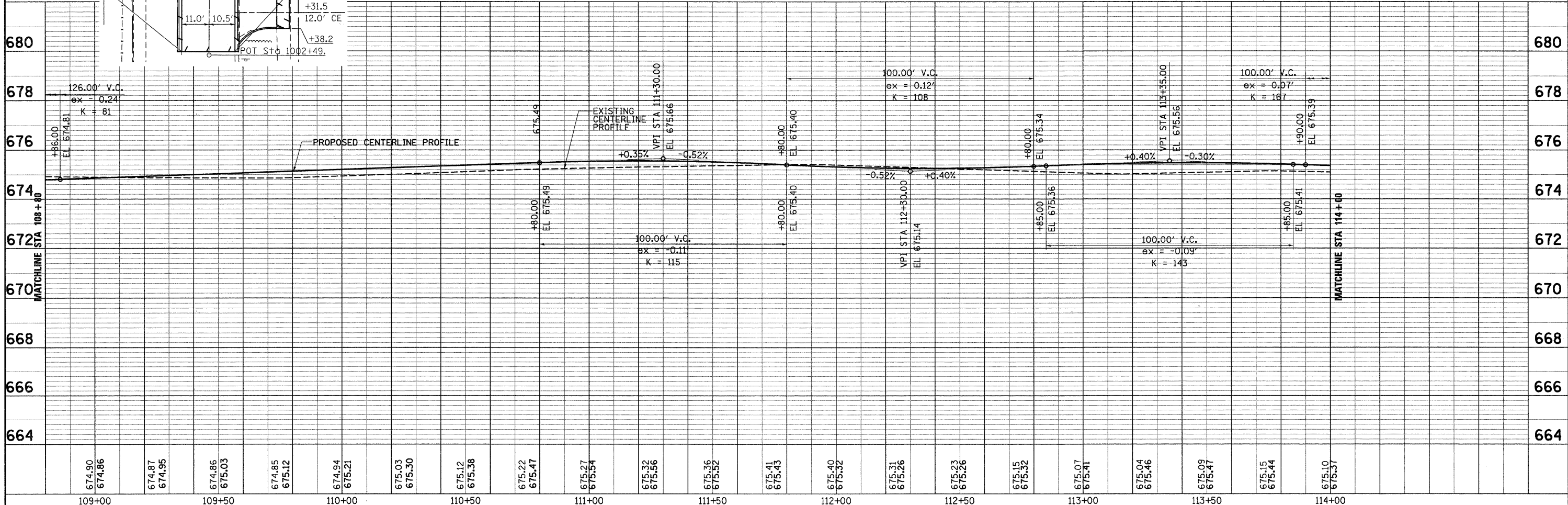
PLAN	SURVEYED	DATE
	ALIGNED	
	CHECKED	
	BY	
	NO. OF WAY CHECKED	
	DATE	
	NO.	

PROFILE	SURVEYED	DATE
	ALIGNED	
	CHECKED	
	BY	
	NO. OF WAY CHECKED	
	DATE	
	NO.	



- NOTES:**
1. ALL PROPOSED ENTRANCES TO BE REPLACED IN KIND. AGGREGATE ENTRANCES TO BE REPLACED WITH HOT-MIX ASPHALT.
  2. ALL EXISTING TREES TO REMAIN SHALL BE PROTECTED. THIS WORK SHALL BE PAID FOR AS TEMPORARY FENCE.
  3. SEE MISCELLANEOUS DETAILS SHEET FOR RAISED CROSSWALK DETAILS.

- LEGEND**
- REMOVAL ITEM
  - TREE REMOVAL



FILE NAME = 026_650pp09.dgn	USER NAME = #USER#	DESIGNED - J.G.	REVISED -	F.A.U. RTE. 2652	SECTION 00-0070-00-PV	COUNTY DuPAGE	TOTAL SHEETS 160	SHEET NO. 26
	PLOT SCALE = 1:20	DRAWN - E.D.	REVISED -	VILLAGE OF VILLA PARK, ILLINOIS				CONTRACT NO. 63379
	PLOT DATE = 6/15/2010	CHECKED -	REVISED -	PLAN AND PROFILE				
		DATE - 9/23/2009	REVISED -	SCALE: 1"=20'	SHEET NO. 9 OF 11 SHEETS	STA. 63+19.78 TO STA. 116+71.35	ILLINOIS FED. AID PROJECT	