

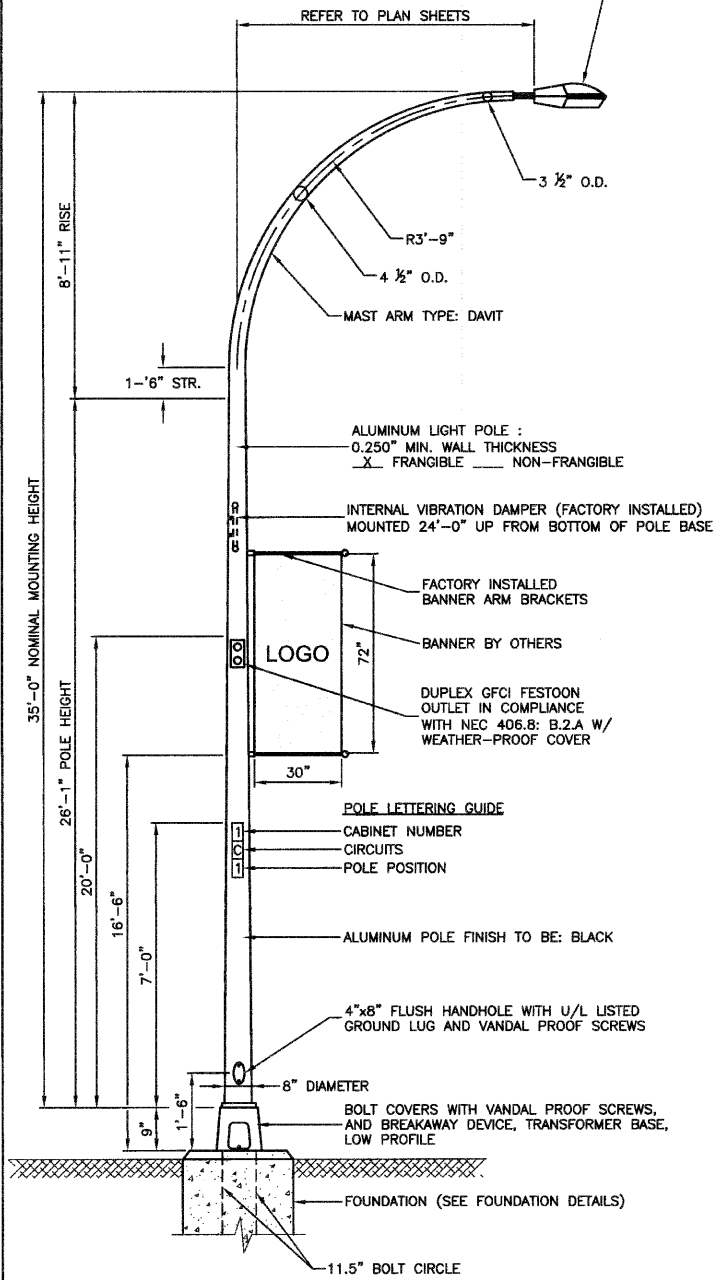
LUMINAIRE: FINISH TO BE BLACK
 150 WATT HIGH PRESSURE SODIUM LAMP
 240 VOLT BALLAST

I.E.S. TYPE: MC III LIGHT DISTRIBUTION
 (MEDIUM FULL CUTOFF TYPE 3)

LENS TYPE: FLAT
 INITIAL LAMP LUMENS: 16,000
 LAMP LIFE: 24,000 HOURS

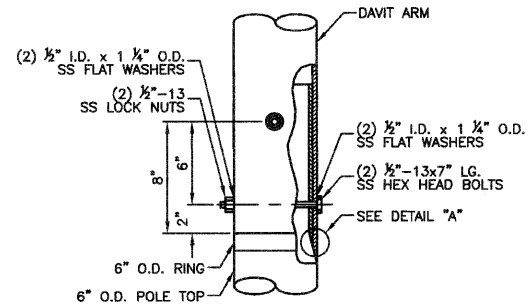
PLAN	SURVEYED	DATE
	PLOTTED	
	CHECKED	
	BY	
	NO.	
	FILE NAME	

PROFILE	SURVEYED	DATE
	PLOTTED	
	CHECKED	
	BY	
	NO.	
	FILE NAME	

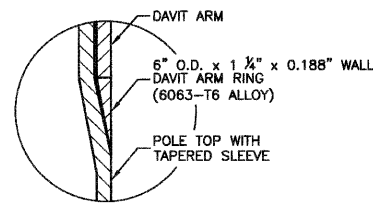


- NOTES:
1. THE LIGHTING UNITS SHALL MEET AASHTO DESIGN CRITERIA. DESIGN FOR 90 M.P.H. WIND WITH 30% GUST AND 75 POUND LUMINAIRE HAVING AN E.P.A. OF 1.6 SQ. FT. AND PROPER ICE LOADING.
 2. ALUMINUM ALLOY 6063-T6 SHALL BE USED.

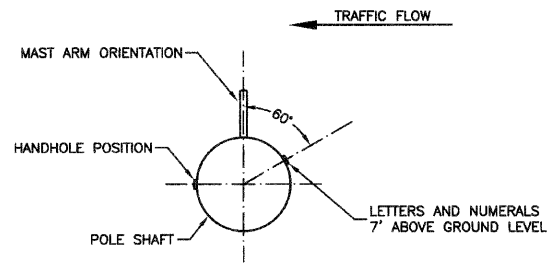
TYPICAL POLE INSTALLATION (35' MH)
 FRONTAGE ROAD



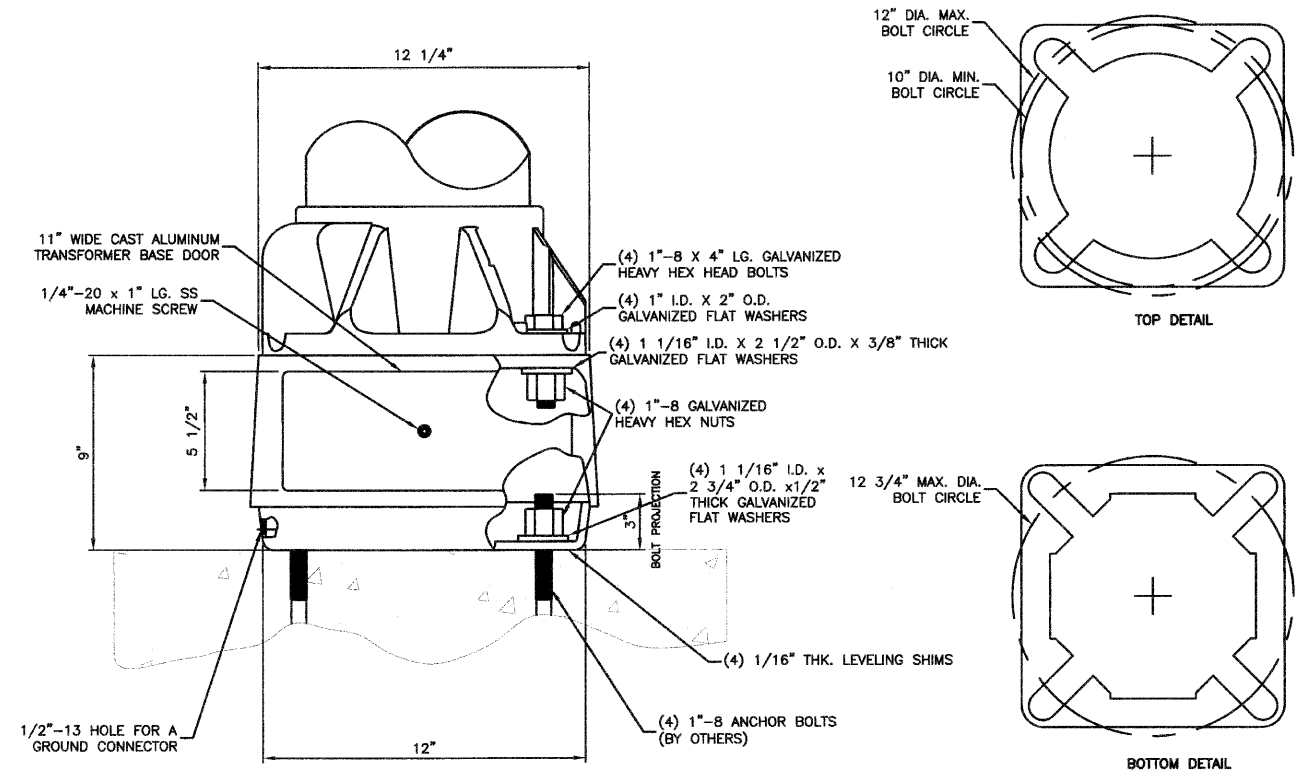
CONNECTION DETAIL



DETAIL "A"



POSITION OF HANDHOLE AND NUMERALS ON POLE



TRANSFORMER BASE DETAIL, 11.5" BOLT CIRCLE

- NOTES:
1. BREAKAWAY DEVICE TO BE AASHTO APPROVED.
 2. TRANSFORMER BASE AND LIGHTPOLE TO BE LEVELED AS ONE UNIT USING LEVELING SHIMS IF REQUIRED.
 3. ALUMINUM ALLOY FINISH TO BE BLACK.



FILE NAME = 09301-LGHT-02 - P02

USER NAME =	DESIGNED -- PAP	REVISED -- #1 06-11-10
	CHECKED -- PKB	REVISED -- #2 06-29-10
PLOT SCALE = N/A	DRAWN -- MJD	REVISED --
PLOT DATE = 04-28-10	CHECKED -- DWS	REVISED --

STATE OF ILLINOIS
 DEPARTMENT OF TRANSPORTATION

HARLEM AVENUE		F.A.P. RTE.	SECTION	COUNTY	TOTAL SHEETS	SHEET NO.
71ST STREET TO NORTH OF 70TH STREET		348	10-00062-00-LT	COOK	15	9
STREET LIGHTING DETAILS		SCALE: N/A		SHEET NO. 9 OF 15 SHEETS		STA. N/A TO STA. N/A

CONTRACT NO. 63486	
FED. ROAD DIST. NO. 1	ILLINOIS FED. AID PROJECT ARA-M-9003(670)