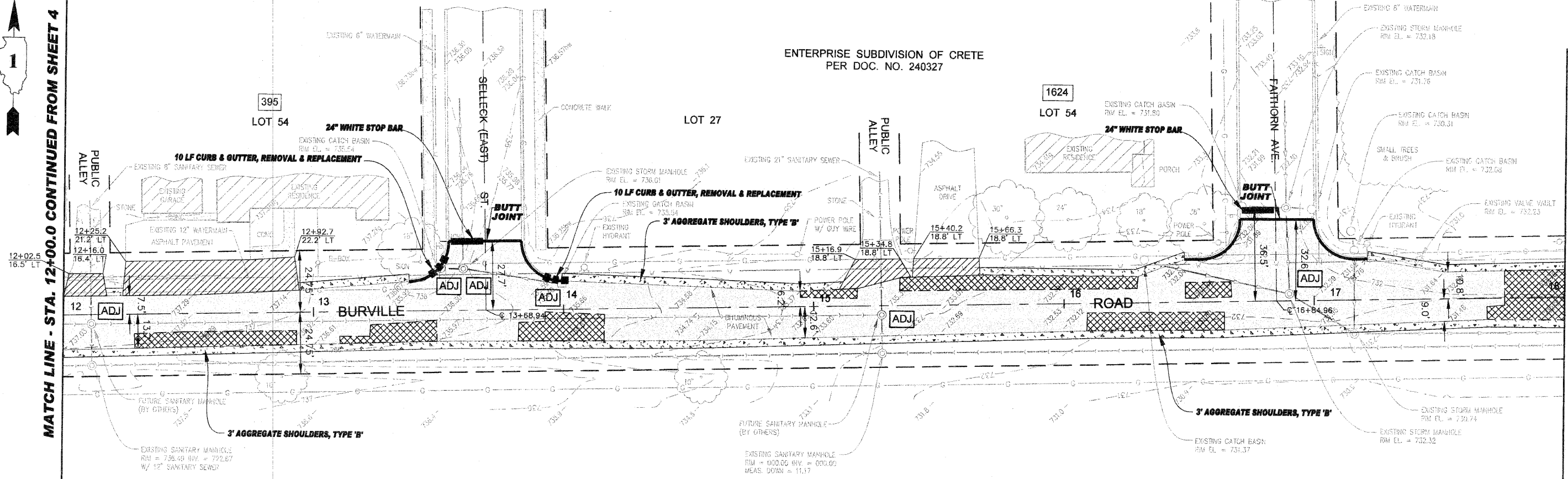




MATCH LINE - STA. 12+00.0 CONTINUED FROM SHEET 4

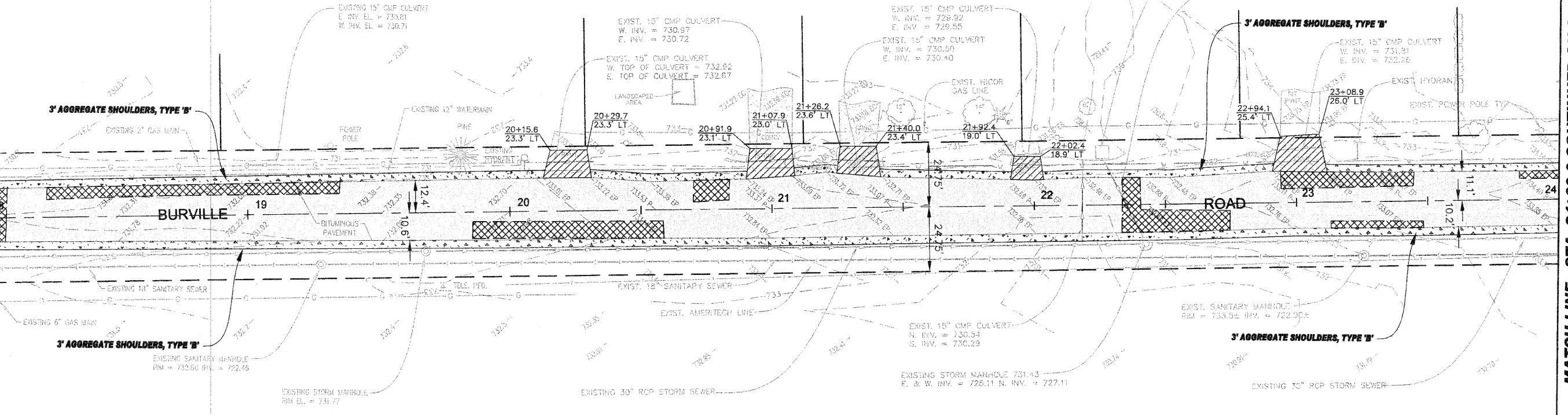


MATCH LINE - STA. 18+00.0 CONTINUED BELOW



MATCH LINE - STA. 18+00.0 CONTINUED ABOVE

- = HMA DRIVEWAY PAVEMENT
- = APPROXIMATE LOCATION OF CLASS 'D' PATCHES, TYPE II, III, OR IV, 5"
- = EXISTING PAVEMENT TO RECEIVE:
  - HOT-MIX ASPHALT SURFACE COURSE, MIX "C", N50, 2 1/4"
  - POLYMERIZED LEVELING BINDER (MACHINE METHOD), IL-4.75, N50, 1"
  - BITUMINOUS MATERIAL (PRIME COAT) (0.15 GAL/S.Y.)



MATCH LINE - STA. 24+00.0 CONTINUED ON SHEET 6

**TECH 3 Consulting Group, Inc.**  
 ENGINEERS SURVEYORS  
 737 West Exchange St., Crete, IL 60417  
 PH 708.672.4904 FAX 708.672.3739  
 ILLINOIS PROFESSIONAL DESIGN FIRM NO. 184-002335

USER NAME =  
 PLOT SCALE =  
 PLOT DATE =

DESIGNED BY = JSB  
 DRAWN BY = JUF  
 CHECKED BY = RWM  
 DATE = 4/27/10

REVISED - 6/8/10 PER IDOT  
 REVISED - 6/28/10 PER IDOT  
 REVISED - 7/7/10 PER IDOT  
 REVISED -

**STATE OF ILLINOIS**  
**DEPARTMENT OF TRANSPORTATION**



**Village of CRETE**  
 WILL COUNTY, ILLINOIS  
**BURVILLE ROAD RESURFACING**  
**SITE PLAN - STA. 12+00 TO 24+00**

FALL RATE	SECTION	COUNTY	TOTAL SHEET	SHEET NO.
4305	10-00046-00-RS	WILL	14	5
CONTRACT NO. 63490		REP. ROAD DIST. NO. 1		

SCALE 1" = 20' SHEET NO. 5 OF 14 SHEETS STA. 12+00 TO 24+00