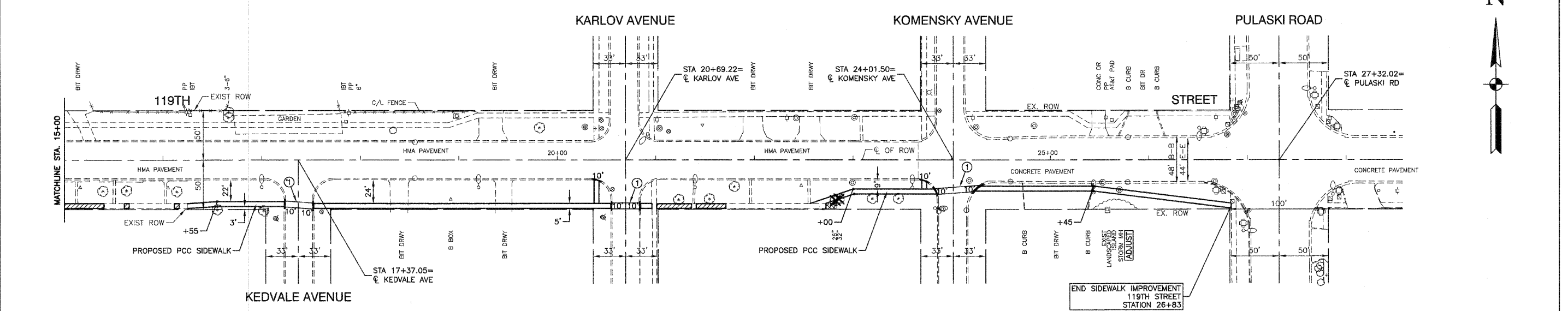
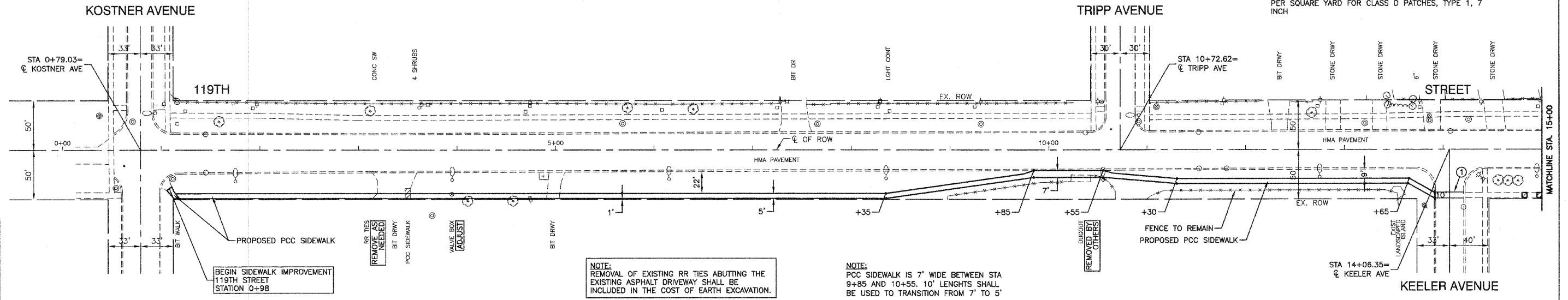


NOTE:
 CLASS D PATCHING ABUTTING CURB & GUTTER
 REPLACEMENT SHALL BE 2" HMA SURFACE AND 5" HMA
 BINDER AS OUTLINED IN THE HMA MIXTURE CHART.
 THIS SHALL BE PAID FOR AT THE CONTRACT UNIT PRICE
 PER SQUARE YARD FOR CLASS D PATCHES, TYPE 1, 7
 INCH

PLAN	SURVEYED	DATE
	PLOTTED	
	DESIGNED	
	CHECKED	
	DRAWN	
	BY	
	DATE	

PROFILE	SURVEYED	DATE
	PLOTTED	
	DESIGNED	
	CHECKED	
	DRAWN	
	BY	
	DATE	



LEGEND

- COMBINATION CONCRETE CURB/CURB & GUTTER REMOVAL & REPLACEMENT
- PORTLAND CEMENT CONCRETE SIDEWALK (5 INCH OR 7 INCH)
- PORTLAND CEMENT CONCRETE SIDEWALK REMOVAL & REPLACEMENT
- TREE OR SHRUB TO BE REMOVED

PAVEMENT MARKING LEGEND

- 6" WHITE LINES (6' C-C)

NOTE:
 ANY EXCAVATED MATERIAL WITHIN THE PULASKI
 ROAD RIGHT OF WAY SHALL NOT BE HAULED OFF
 SITE AND REUSED WITHIN STATE RIGHT OF WAY.

FILE NAME = 10246-PLAN-01-01	USER NAME =	DESIGNED -- TRL	REVISOR --	STATE OF ILLINOIS DEPARTMENT OF TRANSPORTATION	119TH STREET PROPOSED SIDEWALK PLAN ALSIP, ILLINOIS		F.A.U. RTE.	SECTION	COUNTY	TOTAL SHEETS	SHEET NO.	
	PLOT SCALE = 1"=50'	CHECKED -- TRL	REVISOR --		SCALE: 1"=50'	SHEET NO. 4	OF 10 SHEETS	1585	10-00089-00-SW	COOK	10	4
	PLOT DATE = 05-28-10	DRAWN -- RG	REVISOR --		STA. 0+98	TO STA. 26+83		CONTRACT NO. 63491				
		CHECKED -- AG	REVISOR --		FED. ROAD DIST. NO. 1 ILLINOIS FED. AID PROJECT ARA-9003(663)							