

F.A. RTE.	SECTION	COUNTY	TOTAL SHEETS	SHEET NO.
2766	08-00168-00-BT	COOK	18	1
		ILLINOIS	CONTRACT NO. 63492	

SHEET INDEX

1. COVER SHEET
2. EXISTING AND PROPOSED SECTIONS, GENERAL NOTES AND HIGHWAY STANDARDS
3. SUMMARY OF QUANTITIES
4. GENERAL LAYOUT, SIGNAGE AND STRIPING PLAN
5. PLAN AND PROFILE HARLEM AVENUE STA. 2+82 TO 5+00
6. PLAN AND PROFILE LEHIGH AVENUE STA. 5+00 TO 9+50
7. PLAN AND PROFILE LEHIGH AVENUE STA. 9+50 TO 13+50
8. PLAN AND PROFILE LEHIGH AVENUE STA. 13+50 TO 18+50
9. PLAN AND PROFILE LEHIGH AVENUE STA. 18+50 TO 23+00
10. PLAN AND PROFILE LEHIGH AVENUE STA. 23+00 TO 27+50
11. PLAN AND PROFILE LEHIGH AVENUE STA. 27+50 TO 32+00
12. DETAILS
13. DETAILS
14. TC-13 DISTRICT ONE TYPICAL PAVEMENT MARKINGS
15. BD600-03 (BD-8) DETAILS FOR FRAMES AND LIDS ADJUSTMENT WITH MILLING
16. CROSS SECTIONS 1+00 TO 12+50
17. CROSS SECTIONS 13+00 TO 24+50
18. CROSS SECTIONS 25+00 TO 31+50

STATE OF ILLINOIS
DEPARTMENT OF TRANSPORTATION
DIVISION OF HIGHWAYS

PLANS FOR PROPOSED FEDERAL AID HIGHWAY

FAU ROUTE 2766 (LEHIGH AVENUE)
FAU 1297 (GLENVIEW ROAD) TO FAU 1352 (CHESTNUT AVENUE)
TECHNY TRAIL - SEGMENT 3 - BIKE PATH
SECTION 08-00168-00-BT
PROJECT CMM-9003(130)
VILLAGE OF GLENVIEW E07-07
COOK COUNTY
C-91-157-09

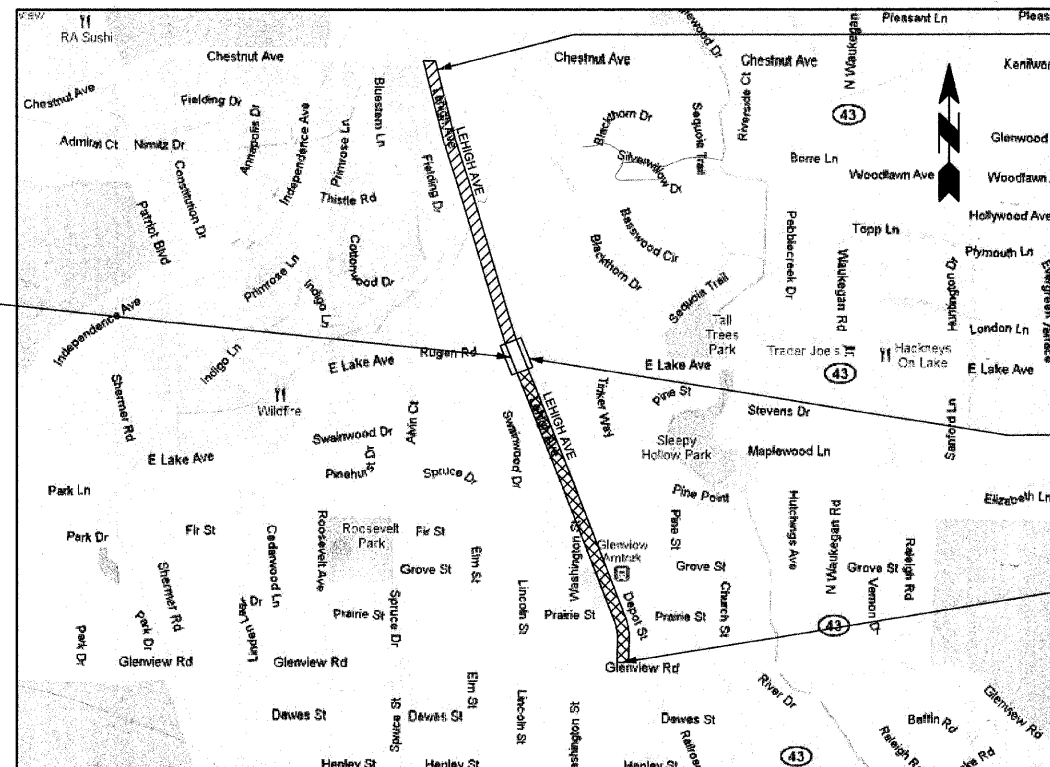


ROADWAY DATA

EXISTING A.D.T.: 11,000
PROPOSED A.D.T.: 11,000
FUNCTIONAL CLASSIFICATION:
COLLECTOR - URBAN
POSTED SPEED: 30 MPH
DESIGN SPEED: 30 MPH

PROJECT LOCATED IN THE
VILLAGE OF GLENVIEW

SECTION 35, TOWNSHIP 42 N, RANGE 12 E, 3RD P.M., NORTHFIELD TOWNSHIP

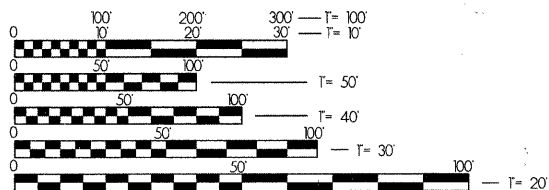


PROJECT ENDS
SIGNAGE AND
STRIPING ENDS
STA 57+03

OMISSION
STA 28+41 TO STA 30+89

PROJECT BEGINS
BIKE PATH,
SIGNAGE AND
STRIPING BEGIN
STA 2+82

EXISTING BRIDGE STRUCTURE NO.: 016-1129
CENTERLINE STATION: 28+87 TO 29+68
STRUCTURE LENGTH: 81 LF
FACILITY CARRIED: LEHIGH AVENUE
FACILITY CROSSED: EAST LAKE AVENUE



FULL SIZE PLANS HAVE BEEN PREPARED USING STANDARD ENGINEERING SCALES. REDUCED SIZED PLANS WILL NOT CONFORM TO STANDARD SCALES. IN MAKING MEASUREMENTS ON REDUCED PLANS, THE ABOVE SCALES MAY BE USED.

J.U.L.I.E.
JOINT UTILITY LOCATION INFORMATION FOR EXCAVATION
1-800-892-0123
OR 811

DANIEL CREANEY COMPANY
CONSULTING CIVIL ENGINEERS
450 SKOKIE BLVD, SUITE 105
NORTHBROOK, ILLINOIS (847) 480-5757

LOCATION MAP
N.T.S.

GROSS LENGTH = 5421 LF = 1.03 MILE
OMISSION LENGTH = 248 LF = 0.05 MILE
NET LENGTH = 5173 LF = 0.98 MILE

STATE OF ILLINOIS
DEPARTMENT OF TRANSPORTATION
DIVISION OF HIGHWAYS

APPROVED June 29 2010
Dubut
GLENVIEW, VILLAGE ENGINEER

PASSED JULY 12 2010
C. H. O'Connell
DISTRICT ENGINEER OF LOCAL ROADS & STREETS

RELEASING FOR BID
BASED ON LIMITED
REVIEW JULY 15, 2010
Diane M. O'Keefe
DEPUTY DIRECTOR OF HIGHWAYS, REGION 1 ENGINEER

PRINTED BY THE AUTHORITY OF THE STATE OF ILLINOIS



JUNE 27 2010
Daniel A. Creaney
DANIEL A. CREANEY, DANIEL CREANEY COMPANY
450 SKOKIE BOULEVARD, SUITE 105
NORTHBROOK, ILLINOIS 60062 (847) 480-5757

CONTRACT NO. 63492

PROGRAM & OFFICE ENGINEER: CHARLES F. RIDDLE, PE 847-705-4406 SCHAUMBURG, IL