

PROGRAM & OFFICE ENGINEER: CHARLES F. RIDDLE, P.E. (847)705-4406

INDEX OF SHEETS

- 1.) COVER SHEET, INDEX OF SHEETS, LOCATION MAP, INDEX OF HIGHWAY STANDARDS
- 2.) GENERAL NOTES, SUMMARY OF QUANTITIES
- 3.) SCHEDULE OF QUANTITIES
- 4.) TYPICAL SIDEWALK SECTIONS, HOT-MIX ASPHALT MIXTURE REQUIREMENTS, BENCHMARKS
- 5.) PLAN & PROFILE: McCARTHY ROAD (SIDEWALK) - WOODCREST LANE TO STA. 10+50
- 6.) PLAN & PROFILE: McCARTHY ROAD (SIDEWALK) - STA. 10+50 TO WALKER ROAD
- 7.-8.) CROSS SECTIONS: McCARTHY ROAD (SIDEWALK) - WOODCREST LANE TO WALKER ROAD
- 9.) TC-10 TRAFFIC CONTROL & PROTECTION FOR SIDE ROADS, INTERSECTIONS, & DRIVEWAYS
- 10.) TC-13 DISTRICT ONE TYPICAL PAVEMENT MARKINGS

HIGHWAY STANDARDS

- 000001-05 STANDARD SYMBOLS, ABBREVIATIONS, AND PATTERNS
- 424001-05 CURB RAMPS FOR SIDEWALK
- 542301-02 PRECAST REINFORCED CONCRETE FLARED END SECTION
- 542311-01 GRATING FOR CONCRETE FLARED SECTION (FOR 24" (600 MM) THRU 54" (1350 MM) PIPE)
- 602401-02 MANHOLE-TYPE A
- 602601-02 PRECAST REINFORCED CONCRETE FLAT SLAB TOP
- 604001-03 FRAMES & LIDS-TYPE 1
- 701301-03 LANE CLOSURE, 2L, 2W, SHORT TIME OPERATIONS
- 701501-05 URBAN LANE CLOSURE, 2 L, 2 W UNDIVIDED
- 701801-04 LANE CLOSURE MULTILANE 1W OR 2W CROSSWALK OR SIDEWALK CLOSURE
- 701901-01 TRAFFIC CONTROL DEVICES

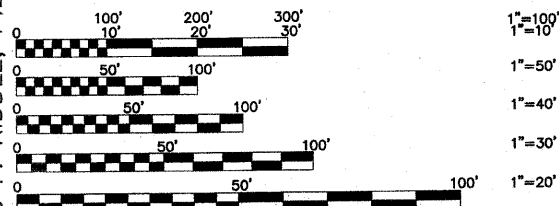
TRAFFIC DATA

ADT: McCARTHY ROAD EXISTING: 6,500 (2009) DESIGN: 8,500 (2027) DESIGN DESIGNATION: MINOR ARTERIAL

POSTED SPEED

40 MPH-McCARTHY ROAD (EXISTING) DESIGN SPEED: 45 MPH-McCARTHY ROAD (PROPOSED)

PROJECT LOCATED IN THE VILLAGE OF LEMONT



FULL SIZE PLANS HAVE BEEN PREPARED USING STANDARD ENGINEERING SCALES. REDUCED SIZED PLANS WILL NOT CONFORM TO STANDARD SCALES. IN MAKING MEASUREMENTS ON REDUCED PLANS, THE ABOVE SCALES MAY BE USED.

J.U.L.I.E. JOINT UTILITY LOCATION INFORMATION FOR EXCAVATION CALL 811

Know what's below. Call before you dig.

Frank Novotny & Associates, Inc.
 825 Midway Drive • Willowbrook, IL • 60527 • Telephone: (630) 887-8640 • Fax: (630) 887-0182
 ILLINOIS PROFESSIONAL DESIGN FIRM NO. 184-000928

REVISIONS			
NO.	BY	DATE	DESCRIPTION
1	JLC	6-10-10	PER I.D.O.T. REVIEW
2	JLC	6-17-10	PER I.D.O.T. REVIEW

CONTRACT NO. 63493

STATE OF ILLINOIS
 DEPARTMENT OF TRANSPORTATION
 DIVISION OF HIGHWAYS

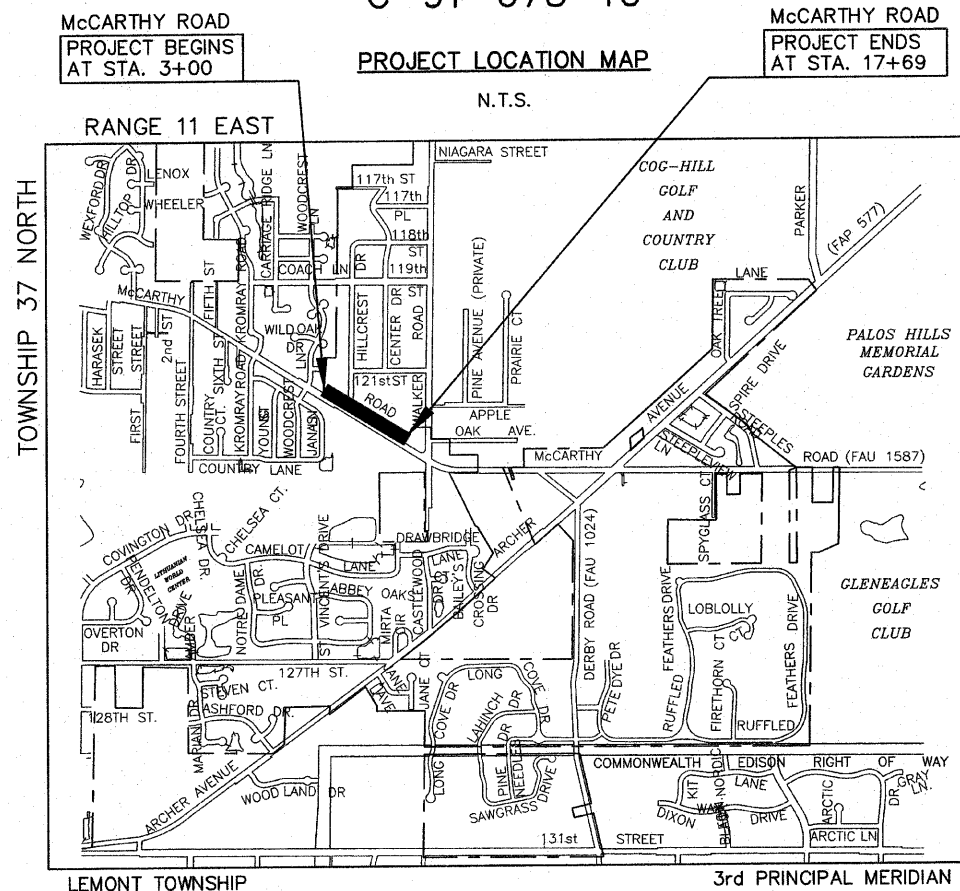
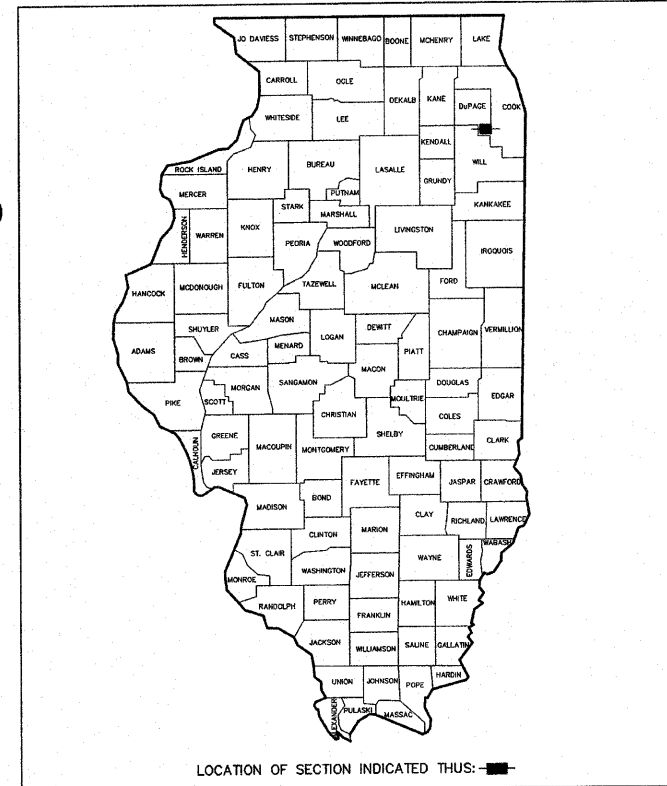
**PLANS FOR PROPOSED
 FEDERAL AID HIGHWAY**

FAU 1587 (McCARTHY ROAD) - FROM WOODCREST LANE TO WALKER ROAD SIDEWALK

PROJECT MARRA-9003(667)
 SECTION 10-00047-00-SW
 VILLAGE OF LEMONT
 COOK COUNTY
 C-91-673-10

FAU RTE	SECTION	COUNTY	TOTAL SHEETS	SHEET NO.
1587	10-00047-00-SW	COOK	10	1

F.H.W.A. REG. ILLINOIS PROJECT ARA-9003(667)
 CONTRACT NO. 63493



█ DENOTES LOCATION OF IMPROVEMENT

LENGTH OF PROJECT

GROSS LENGTH OF PROJECT 1,469 FEET (0.2782 MILES)
 NET LENGTH OF PROJECT 1,469 FEET (0.2782 MILES)

STATE OF ILLINOIS
 DEPARTMENT OF TRANSPORTATION
 DIVISION OF HIGHWAYS

APPROVED JUNE 17 2010
 VILLAGE OF LEMONT BRIAN K. REAVES, VILLAGE MAYOR

PASSED JULY 19 2010
 DISTRICT 1 ENGINEER OF LOCAL ROADS & STREETS

RELEASING FOR BID BASED ON LIMITED REVIEW JULY 21, 2010
 DEPUTY DIRECTOR OF HIGHWAYS, REGION 1 ENGINEER

JAMES L. CAINKAR, P.E.
 IL. P.E. NO. 62-36190
 EXPIRES 11-30-2011

7-13-10 DATE

**PRINTED BY THE AUTHORITY
 OF THE STATE OF ILLINOIS**