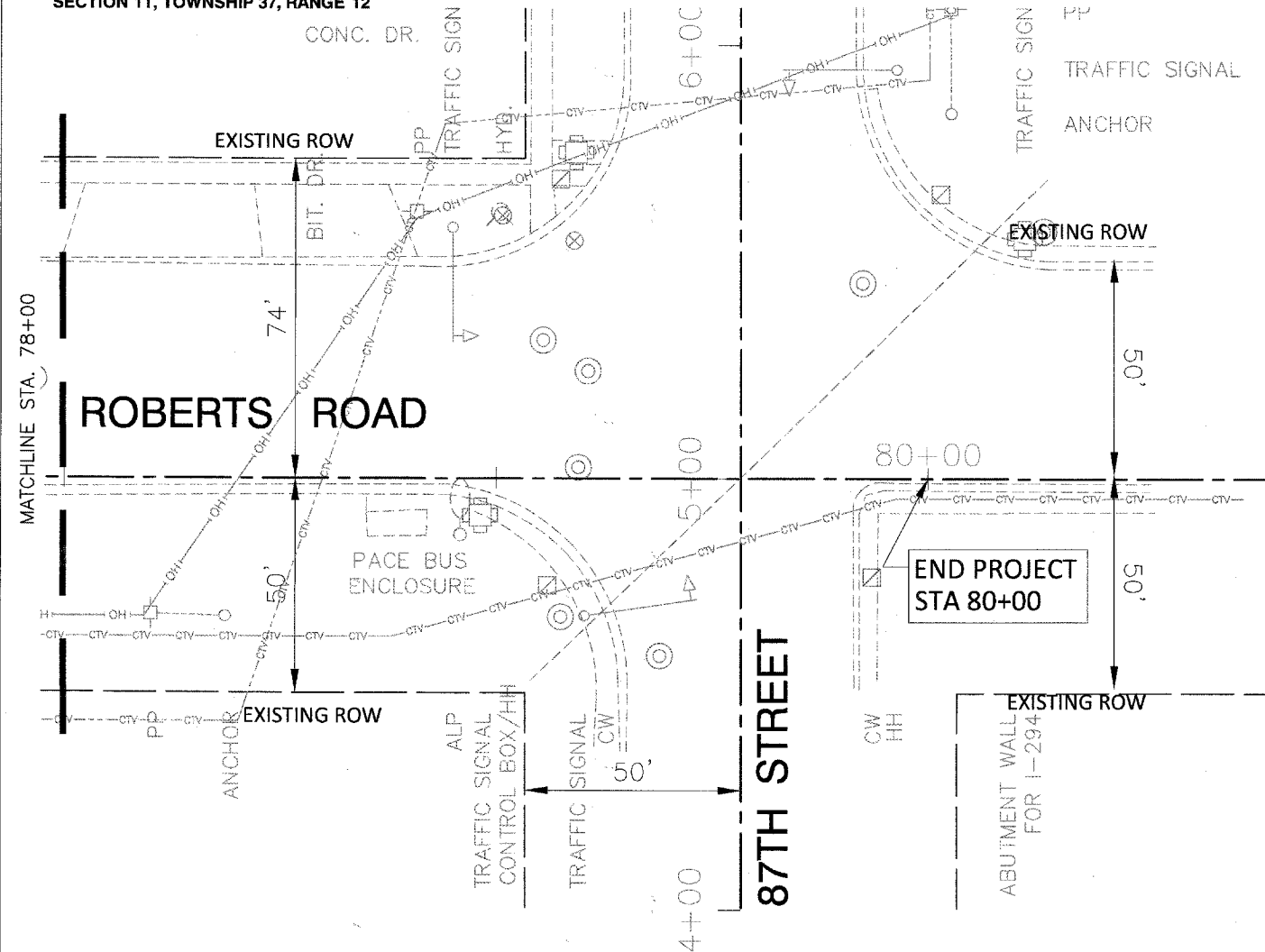


SECTION 2, TOWNSHIP 37, RANGE 12  
SECTION 11, TOWNSHIP 37, RANGE 12

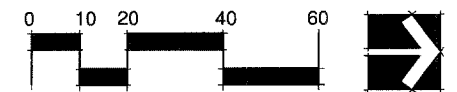


**DEMOLITION PLAN NOTES:**

1. SIDEWALK REMOVAL
2. COMBINATION CURB AND GUTTER REMOVAL
3. EARTH EXCAVATION.
4. SOD STRIPPING, 2" DEPTH
5. MANHOLE TO BE ADJUSTED.
6. VALVE BOX TO BE ADJUSTED.
7. CONCRETE MEDIAN SURFACE REMOVAL
8. REMOVE SIGN PANEL ASSEMBLY - TYPE A OR TYPE B, REMOVE SIGN PANEL - TYPE 1 - ALL EXISTING SIGN PANELS TO BE REMOVED AND CLEANED. SEE DETAIL 4, SHEET 33, THE SIGN SCHEDULE AND PLANS.
9. REMOVE SIGN PANEL - TYPE 1 - SIGNS ATTACHED TO LIGHTPOLES AND TRAFFIC POSTS TO BE REMOVED AND CLEANED. SEE DETAIL 4, SHEET 33 THE SIGN SCHEDULE AND PLANS.

**LEGEND**

- SIDEWALK REMOVAL
- COMBINATION CURB AND GUTTER REMOVAL
- EARTH EXCAVATION.
- SOD STRIPPING, 2" DEPTH
- CONCRETE MEDIAN SURFACE REMOVAL
- EXISTING SIGN MOUNTED ON SINGLE POLE
- EXISTING SIGN MOUNTED ON TWO POLES
- EXISTING SIGN MOUNTED ON LIGHT POLE OR TRAFFIC POLE



• SITE SURVEY PROVIDED BY:  
ROBINSON ENGINEERING, INC.  
17000 South Park Avenue  
South Holland, Illinois 60473  
(708) 331-6700

\*\* SEE ALSO DEMOLITION PLAN GENERAL NOTES SHEET 2

FILE NAME = prf existing conditions - 18

PLANNING  
RESOURCES INC.  
402 West J Street, Suite 100  
Chicago, Illinois 60607  
Tel: (312) 467-3700 Fax: (312) 467-4122

USER NAME =	DESIGNED -- BCL	REVISED --
PLOT SCALE = 1"=20'	CHECKED -- KLG	REVISED --
PLOT DATE =	DRAWN -- BCL/RJA	REVISED --
	CHECKED -- KLG	REVISED --

STATE OF ILLINOIS  
DEPARTMENT OF TRANSPORTATION

EXISTING CONDITIONS/ DEMOLITION PLAN			
SCALE: 1"=20'	SHEET NO. 18 OF 35 SHEETS	STA. 72+00 TO STA. 78+00	

F.A.U. RTE.	SECTION	COUNTY	TOTAL SHEETS	SHEET NO.
2757	10-00062-00-LS	COOK	35	18
CONTRACT NO. 63494				
FED. ROAD DIST. NO. 1 ILLINOIS FED. AID PROJECT ARA-M-9003(864)				