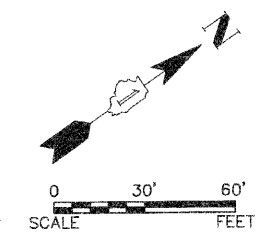


F.A.U. PTE.	SECTION	COUNTY	TOTAL SHEETS	SHEET NO.
3764	10-00046-00-RS	KENDALL	13	7
CONTRACT NO. 83498				

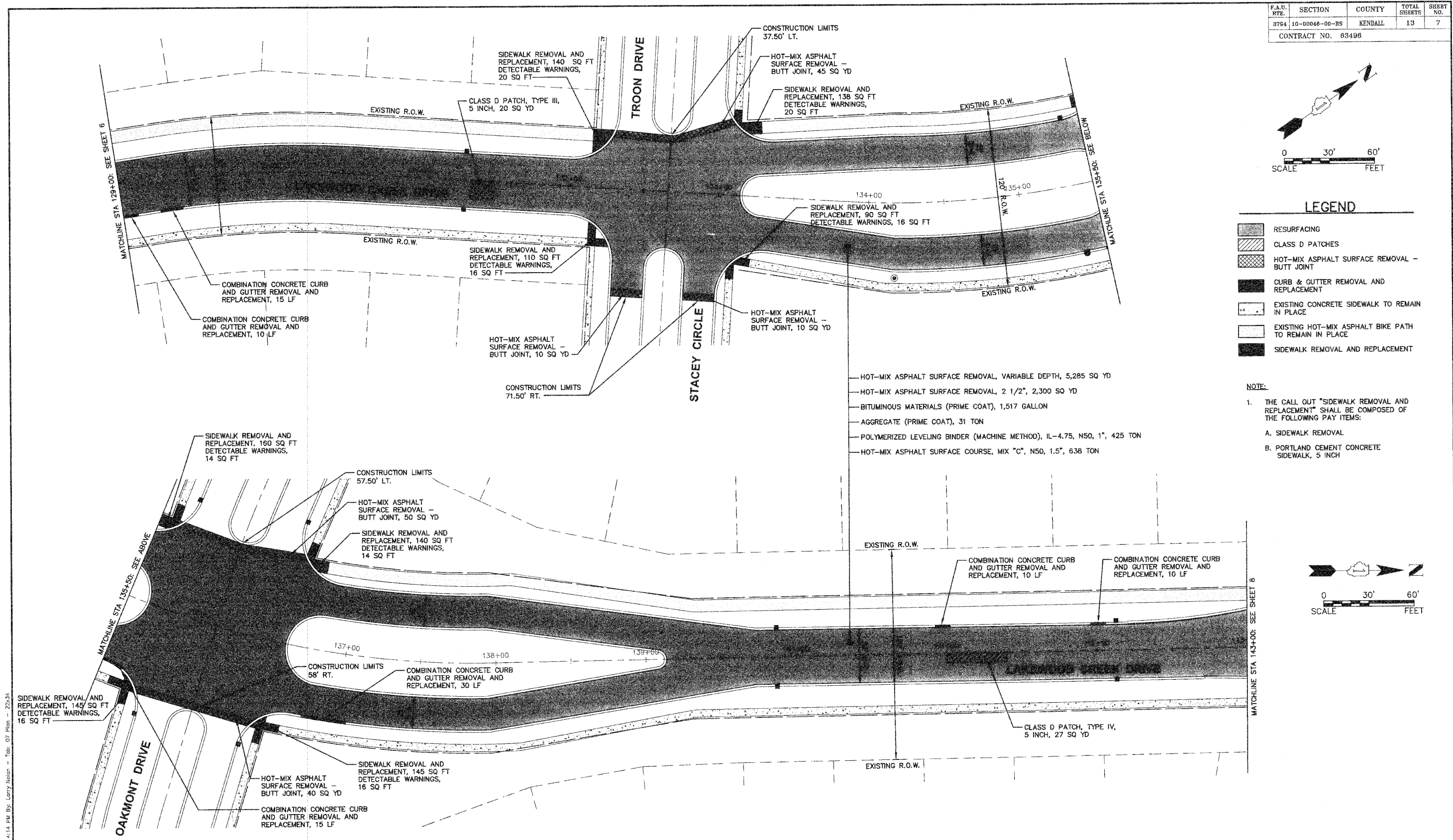
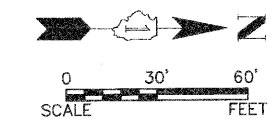


LEGEND

- RESURFACING
- CLASS D PATCHES
- HOT-MIX ASPHALT SURFACE REMOVAL - BUTT JOINT
- CURB & GUTTER REMOVAL AND REPLACEMENT
- EXISTING CONCRETE SIDEWALK TO REMAIN IN PLACE
- EXISTING HOT-MIX ASPHALT BIKE PATH TO REMAIN IN PLACE
- SIDEWALK REMOVAL AND REPLACEMENT

NOTE:

1. THE CALL OUT "SIDEWALK REMOVAL AND REPLACEMENT" SHALL BE COMPOSED OF THE FOLLOWING PAY ITEMS:
 - A. SIDEWALK REMOVAL
 - B. PORTLAND CEMENT CONCRETE SIDEWALK, 5 INCH



COPYRIGHT © 2010 ENGINEERING ENTERPRISES, INC.

Engineering Enterprises, Inc.
 CONSULTING ENGINEERS
 52 Wheeler Road
 Sugar Grove, Illinois 60554
 630.466.6700 / www.eeiweb.com

VILLAGE OF MONTGOMERY

NO.	DATE	REVISIONS

**LAKWOOD CREEK DRIVE
 LAPP IMPROVEMENTS**

**PLAN, CONSTRUCTION
 NOTES, AND DETAILS**

DATE:	JUNE 2010
PROJECT NO:	M00930
FILE:	M00930-PLAN
SHEET	7 OF 13

Plotted: June 8, 2010 @ 4:14 PM By: Larry Nolan - Tab: 07 Plot: 22534
 Path: \\sbsprhd01\00930\DWG\DWG_FINAL_ENC\M00930-PLAN