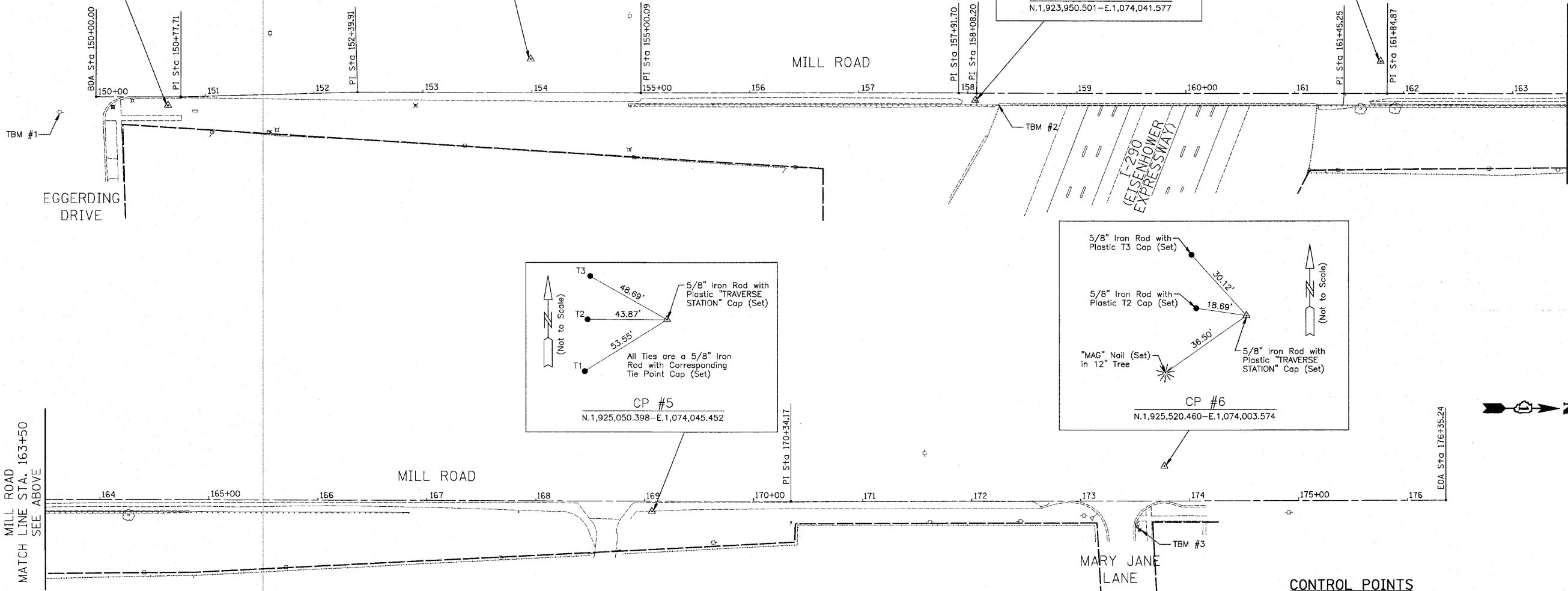
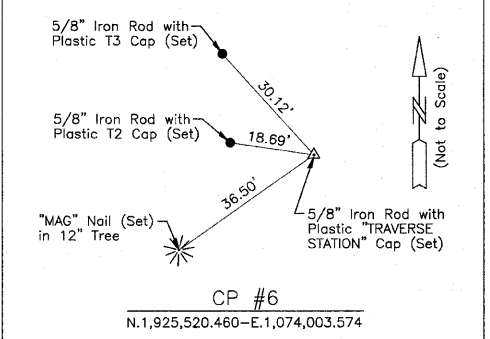
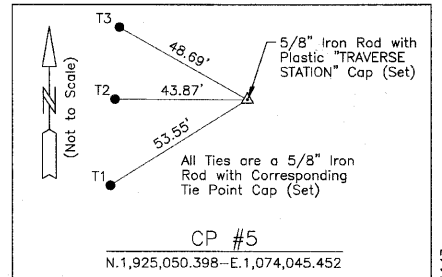
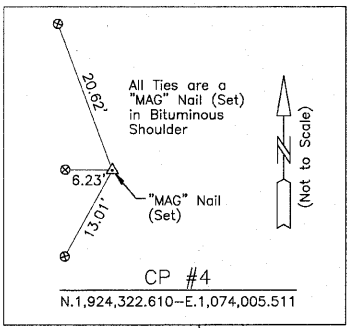
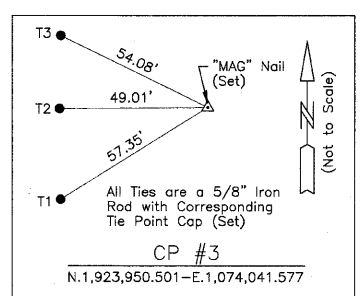
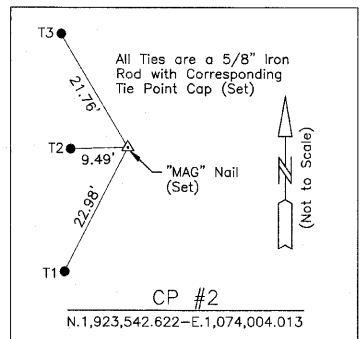
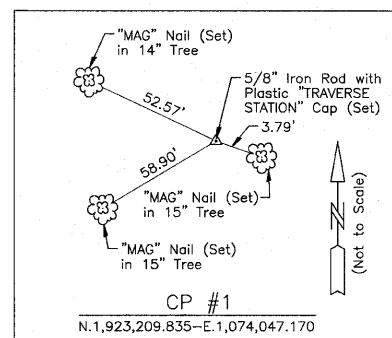


PLAN	DATE
BY	
NO. 1	
NO. 2	
NO. 3	
NO. 4	
NO. 5	
NO. 6	
NO. 7	
NO. 8	
NO. 9	
NO. 10	

PROFILE	DATE
BY	
NO. 1	
NO. 2	
NO. 3	
NO. 4	
NO. 5	
NO. 6	
NO. 7	
NO. 8	
NO. 9	
NO. 10	



MILL ROAD ALIGNMENT DATA

DESCRIPTION	STATION	NORTHING	EASTING
BOA	150+00.00	1923143.8040	1074039.3866
PI	150+77.71	1923221.5112	1074039.5200
PI	152+39.91	1923383.6514	1074034.8961
PI	155+00.09	1923643.8259	1074035.0821
PI	157+91.70	1923935.4389	1074034.8572
PI	158+08.20	1923951.9363	1074035.1233
PI	161+45.25	1924288.9890	1074035.1796
PI	161+84.87	1924328.6091	1074035.3479
PI	170+34.17	1925177.9009	1074036.2637
EOA	176+35.24	1925778.9748	1074034.9723

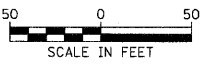
BENCH MARKS

TBM #	DESCRIPTION	ELEVATION
1	RAILROAD SPIKE (SET) IN POWER POLE IN THE SOUTHEAST QUADRANT OF THE INTERSECTION OF MILL ROAD AND EGGERDING DRIVE.	698.13
2	BOX CUT (SET) IN SOUTHEAST CORNER OF CONCRETE BARRIER WALL ON EAST SIDE OF MILL ROAD BRIDGE OVER I-290.	720.79
3	CROSS CUT (SET) IN SOUTHWEST FLANGE BOLT OF FIRE HYDRANT IN THE NORTHEAST QUADRANT OF THE INTERSECTION OF MILL ROAD AND MARY JANE LANE.	701.20

CONTROL POINTS

CP #	NORTHING	EASTING	STATION	OFFSET
1	1923209.835	1074047.170	150+66.04	7.62' RT
2	1923542.622	1074004.013	153+98.86	31.00' LT
3	1923950.501	1074041.577	158+06.87	6.48' RT
4	1924322.610	1074005.511	161+78.74	29.81' LT
5	1925050.398	1074045.452	169+06.67	9.33' RT
6	1925520.460	1074003.574	173+76.79	31.95' LT

- NOTES:
- THREE POINT TIES ARE PROVIDED ONLY TO FIND GENERAL LOCATION OF CONTROL POINT NOT TO ACCURATELY RECREATE POINT.
 - COORDINATES AND DISTANCES SHOWN ARE GROUND.
 - BASIS OF BEARINGS IS THE ILLINOIS STATE PLANE COORDINATE SYSTEM EAST ZONE (NAD83).



NOTES:
 BOA = BEGINNING OF ALIGNMENT
 PI = POINT OF INTERSECTION
 EOA = END OF ALIGNMENT
 BM = BENCHMARK

DESIGNED - JAT	REVISED -
DRAWN - JAT	REVISED -
CHECKED - RTM	REVISED -
DATE - 7/1/2010	REVISED -

STATE OF ILLINOIS
 DEPARTMENT OF TRANSPORTATION

ALIGNMENT, TIES AND BENCHMARKS - MILL ROAD

SCALE: 1" = 50' SHEET NO. 1 OF 1 SHEETS

F.A.U. R.T.E. 2625	SECTION 07-00097-00-SW	COUNTY DUPAGE	TOTAL SHEETS 31	SHEET NO. 7
CONTRACT NO. 63502				
FED. ROAD DIST. NO. 1 ILLINOIS FED. AID PROJECT				