

Existing Structure: (SN 022-0109) built in 1970, carries Northbound and Southbound Mill Road over I-290. The structure is a two span continuous steel bridge, with approach spans at each end (supported by prestressed concrete I-beams), carrying two lanes of traffic.

Traffic will be maintained during construction.

TOTAL BILL OF MATERIAL

ITEM	UNIT	QUANTITY
Protective Shield	Sq. Yd.	120
Concrete Superstructure	Cu. Yd.	44.9
Reinforcement Bars, Epoxy Coated	Pound	6,750
Parapet Railing, Special	Foot	339
* Concrete Bridge Deck Scarification, 2"	Sq. Yd.	52

* - See Special Provision.

GENERAL NOTES:

Reinforcement bars shall conform to the requirements of ASTM A 706 Gr 60. See Special Provisions.

Reinforcement bars designated (E) shall be epoxy coated.

Plan dimensions and details relative to existing plans are subject to nominal construction deviations. The Contractor shall field verify existing dimensions and details affecting new construction and make necessary approved adjustments prior to construction or ordering of materials. Such variations shall not be cause for additional compensation for a change in scope of work, however, the Contractor will be paid the quantity actually furnished at the unit price bid for the work.

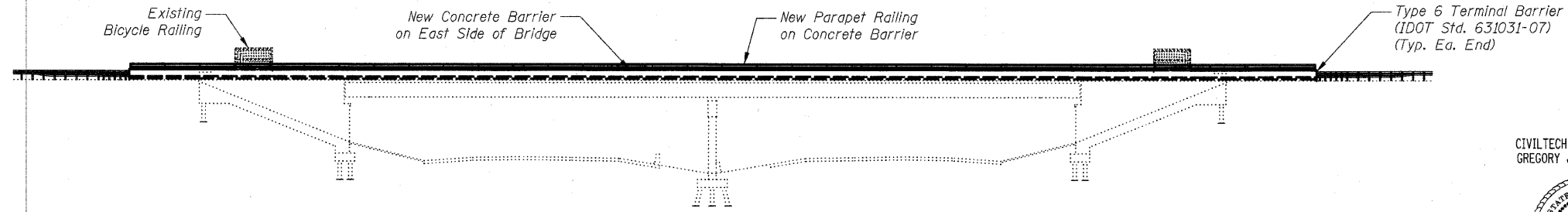
INDEX OF SHEETS

- S1 General Plan and Elevation
- S2 Concrete Barrier Details
- S3 Parapet Railing, Special Details

DATE	BY	REVISION

DATE	BY	REVISION

FILE NAME = J:\2003\cadd\Struct\01.gdb.sgn
 2/19/2010 9:11 AM



ELEVATION

CIVILTECH ENGINEERING, INC.
GREGORY J. HATLESTAD, S.E.



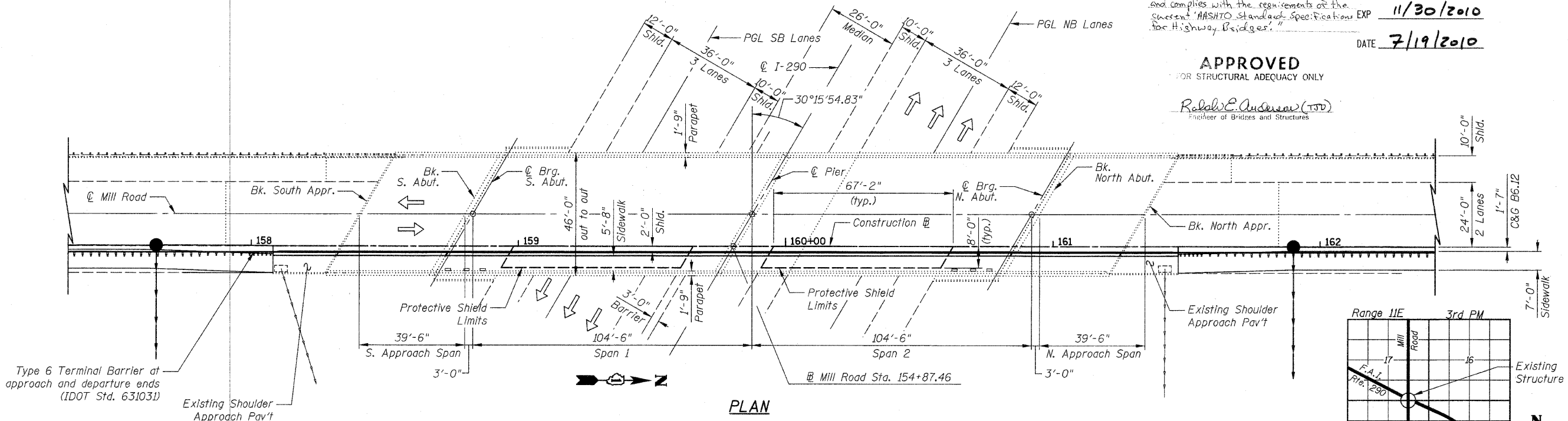
I certify that to the best of my knowledge, information and belief, this bridge design is structurally adequate for the design loading shown on the plans. The design is an economical one for the style of structure and complies with the requirements of the recent "AASHTO Standard Specifications for Highway Bridges."

Gregory J. Hatlestad
GREGORY J. HATLESTAD, S.E.
081-005562

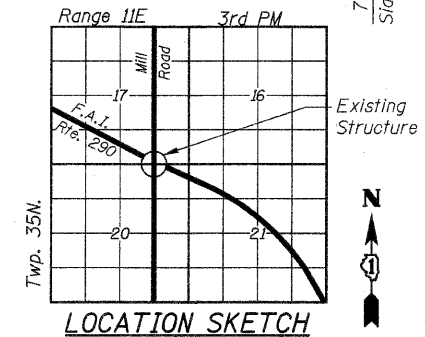
EXP 11/30/2010
DATE 7/19/2010

APPROVED
FOR STRUCTURAL ADEQUACY ONLY

Robert E. Aulsebrook (TS)
Engineer of Bridges and Structures



PLAN



LOCATION SKETCH

FILE NAME =	USER NAME = gjh	DESIGNED -	REVISED -	STATE OF ILLINOIS DEPARTMENT OF TRANSPORTATION	GENERAL PLAN AND ELEVATION MILL ROAD OVER I-290 - STA. 159+87.46 DUPAGE COUNTY, SECTION 22-IHB-6, SN 022-0109	F.A.I. RTE.	SECTION	COUNTY	TOTAL SHEETS	SHEET NO.	
#FILEL#	PLOT SCALE = #SCALE#	DRAWN -	REVISED -			2625	07-00097-00-SW	DUPAGE	31	15	
PLOT DATE = 7/19/2010	DATE = July 19, 2010	CHECKED -	REVISED -			CONTRACT NO. 63502					
		DATE = July 19, 2010	REVISED -			FED. ROAD DIST. NO. 7 ILLINOIS FED. AID PROJECT					