

F.A.U. RTE.	SECTION	COUNTY	TOTAL SHEETS	SHEET NO.
2552	10-00148-00-RS	DUPAGE/WILL	24	1

CONTRACT NO. 63506

INDEX OF SHEETS

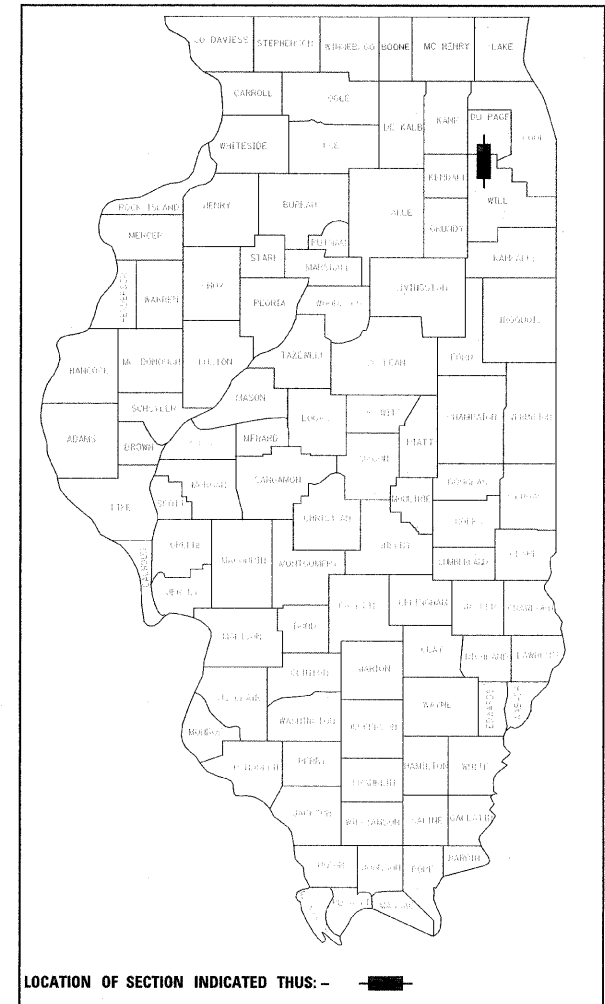
SHEET NO.	DESCRIPTION
1	TITLE
2	GENERAL NOTES, STANDARDS
3	SUMMARY OF QUANTITIES
4	TYPICAL SECTIONS
5-8	PROPOSED ROADWAY PLANS
9-12	PAVEMENT MARKING PLANS
13-24	DISTRICT ONE DETAILS

STATE OF ILLINOIS
DEPARTMENT OF TRANSPORTATION
DIVISION OF HIGHWAYS

PLANS FOR PROPOSED FEDERAL AID HIGHWAY

**FAU 2552 ROUTE (WASHINGTON STREET)
NAPER BLVD TO 75TH STREET
RESURFACING**

**SECTION 10-00148-00-RS
PROJECT NO. M-9003(695)
CITY OF NAPERVILLE
DUPAGE / WILL COUNTY
JOB NO: C-91-738-10**



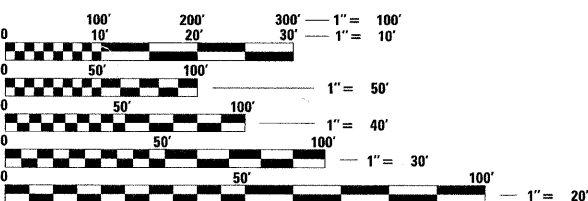
DESIGN DESIGNATION

30600 (09) MINOR ARTERIAL 4.3 (FD-20)

ADT (2030) ADT = 36,000

TRAFFIC DATA

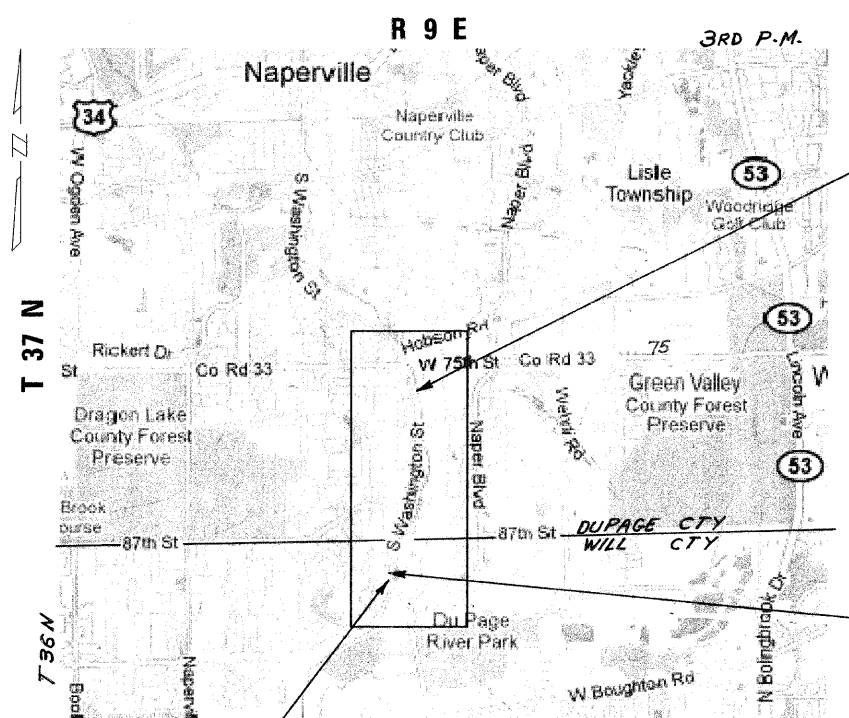
ADT (2009) = 28,000
POSTED SPEED = 35 MPH



FULL SIZE PLANS HAVE BEEN PREPARED USING STANDARD ENGINEERING SCALES. REDUCED SIZED PLANS WILL NOT CONFORM TO STANDARD SCALES. IN MAKING MEASUREMENTS ON REDUCED PLANS, THE ABOVE SCALES MAY BE USED.

J.U.L.I.E.
JOINT UTILITY LOCATION INFORMATION FOR EXCAVATION
1-800-892-0123 OR 811

CONTRACT NO. 63506



**PROJECT LIMIT
STATION 198 + 10**

**PROJECT LIMIT
STATION 106 + 65**

WASHINGTON STREET BRIDGE
OVER WEST BRANCH OF
DUPAGE RIVER

LOCATION MAP
NOT TO SCALE

GROSS AND NET LENGTH = 9,145 FT (1.73 MILES)

**STATE OF ILLINOIS
DEPARTMENT OF TRANSPORTATION
DIVISION OF HIGHWAYS**

Approved June 30 2010
[Signature]
CITY OF NAPERVILLE, CITY ENGINEER

Passed July 12 2010
[Signature]
DISTRICT 1 ENGINEER OF LOCAL ROADS AND STREETS

Releasing for Bid
Based on Limited
Review July 15 2010
[Signature]
DEPUTY DIRECTOR OF HIGHWAYS, REGION 1 ENGINEER

**PRINTED BY THE AUTHORITY
OF THE STATE OF ILLINOIS**

PLANS PREPARED BY:

URS 100 S. WACKER DR., SUITE 500 TEL (312)-939-1000
CHICAGO IL, 60606 FAX (312)-939-4198

DATE: 6/29/10
Expires: 11/30/11

PROGRAM AND OFFICE ENGINEER: CHARLES F. RIDDLE, P.E. 847-705-4406 SCHAUMBURG, IL